



# Canon PowerShot SD30 Control Panel Replacement

This will show you how to take out the current control panel and replace the inside panel of your Canon PowerShot SD30.

Written By: Diego Hughes



---

## INTRODUCTION

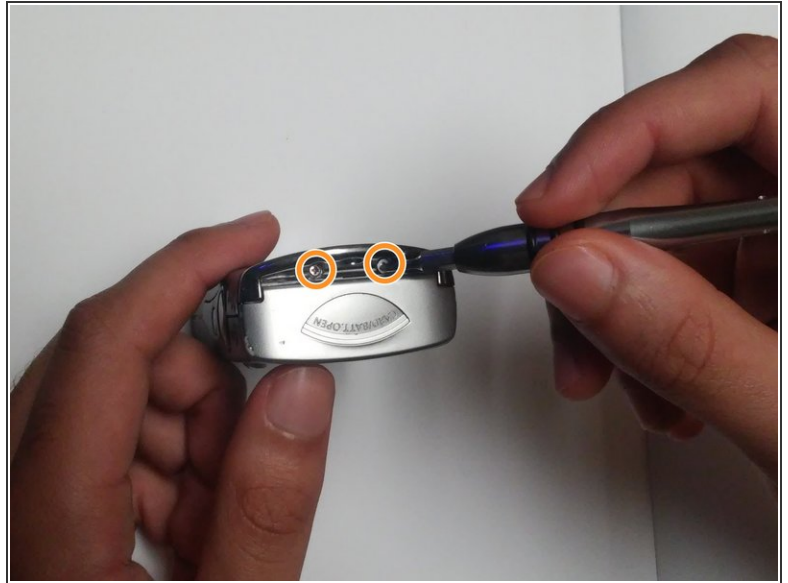
Use this guide to replace the control panel in your camera.

---

### **TOOLS:**

- [Phillips #00 Screwdriver](#) (1)
  - [Tweezers](#) (1)
-

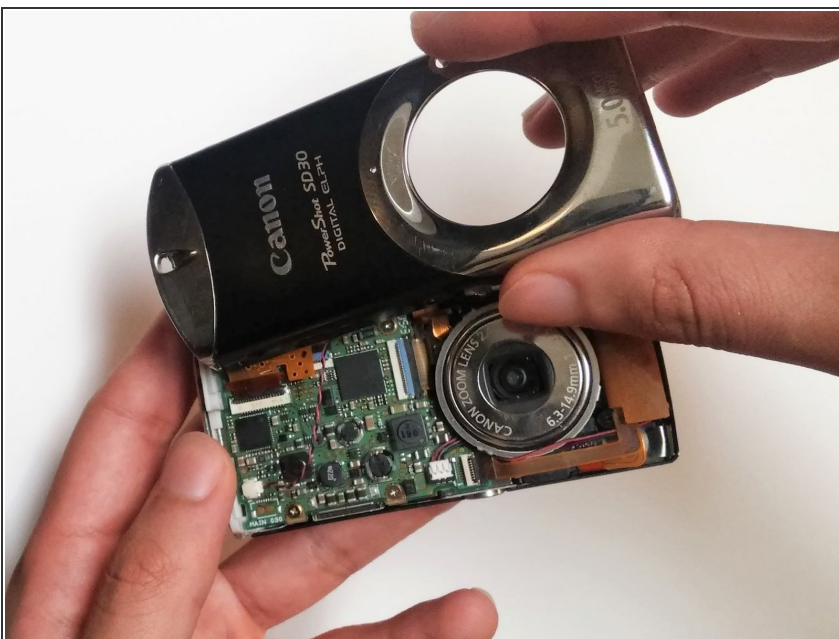
## Step 1 — Front Cover



**i** Be sure to remove the wrist strap and battery before removing the cover.

- Remove the two 2mm black screws that are located on the underside of the camera.
- Remove the two 3mm silver screws from the right side of camera.

## Step 2



- Gently remove the front cover.

### Step 3 — Back Cover



**i** Remove the wrist strap and battery before removing the back cover.

- Remove the 2mm screw from the back of the camera.
- Remove two 2mm screws from the bottom of the camera.
- Remove two 2mm screws the left side of camera.

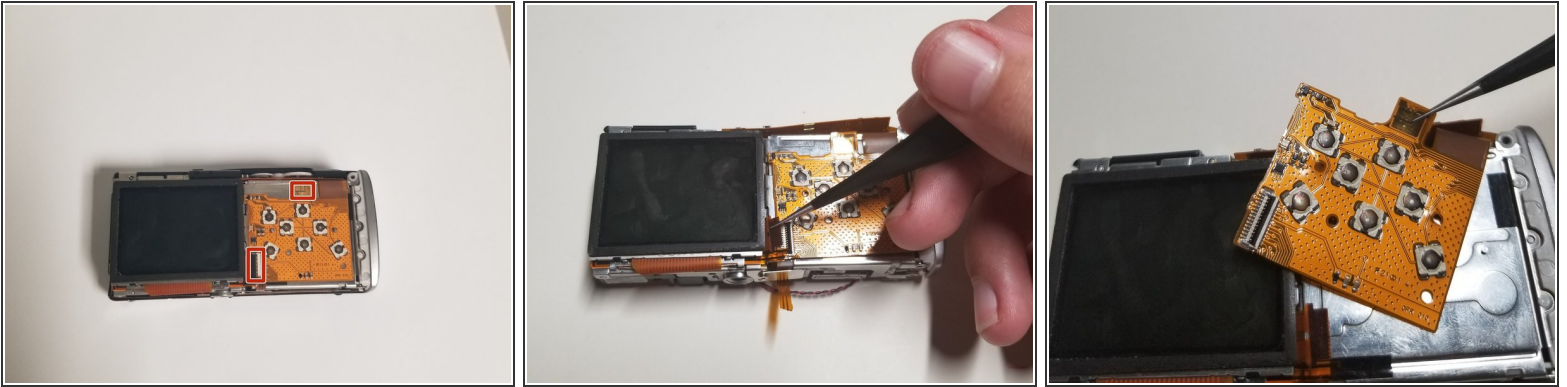
### Step 4



- Gently remove the back cover.



## Step 5 — Control Panel



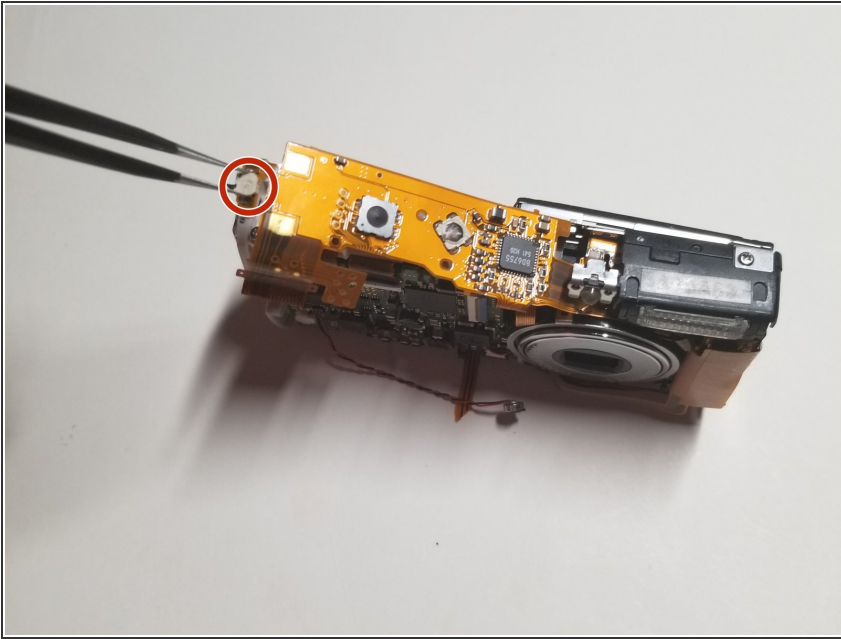
- Use the tweezers to pull up on the piece of black plastic connected to the ribbon to unhook and remove the ribbon connected to the screen.
- ⓘ You also have to pull up on the top part of the control panel because it is connected to the metal by a sticky pad.

## Step 6



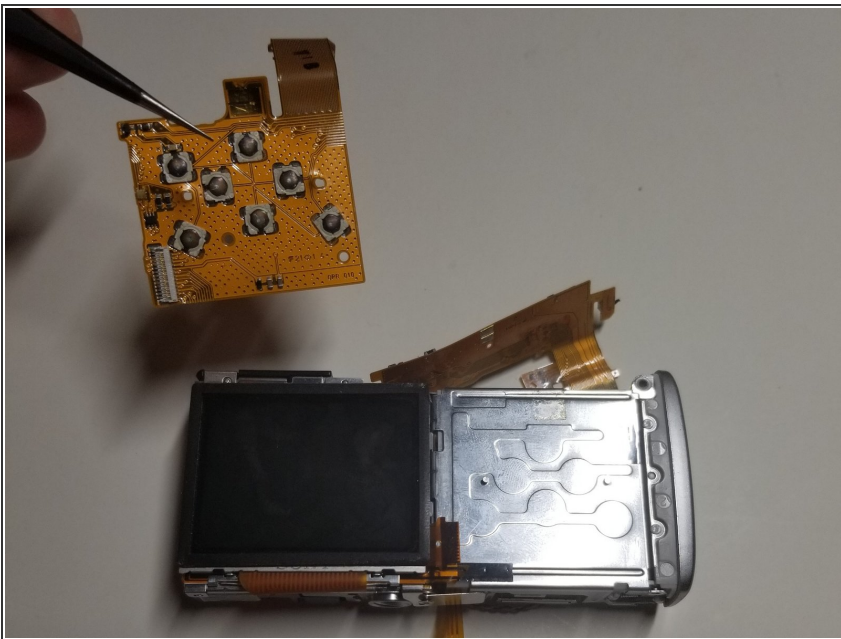
- Turn the camera over to the side with the lens and remove the ribbon on the left side.
- After removing the ribbon there will be a second ribbon to remove that was hiding underneath the first ribbon.

## Step 7



- Lift up the button that connects to the power button of the camera so you can remove the control panel.

## Step 8



- Remove the control panel from the camera.

To reassemble your device, follow these instructions in reverse order.