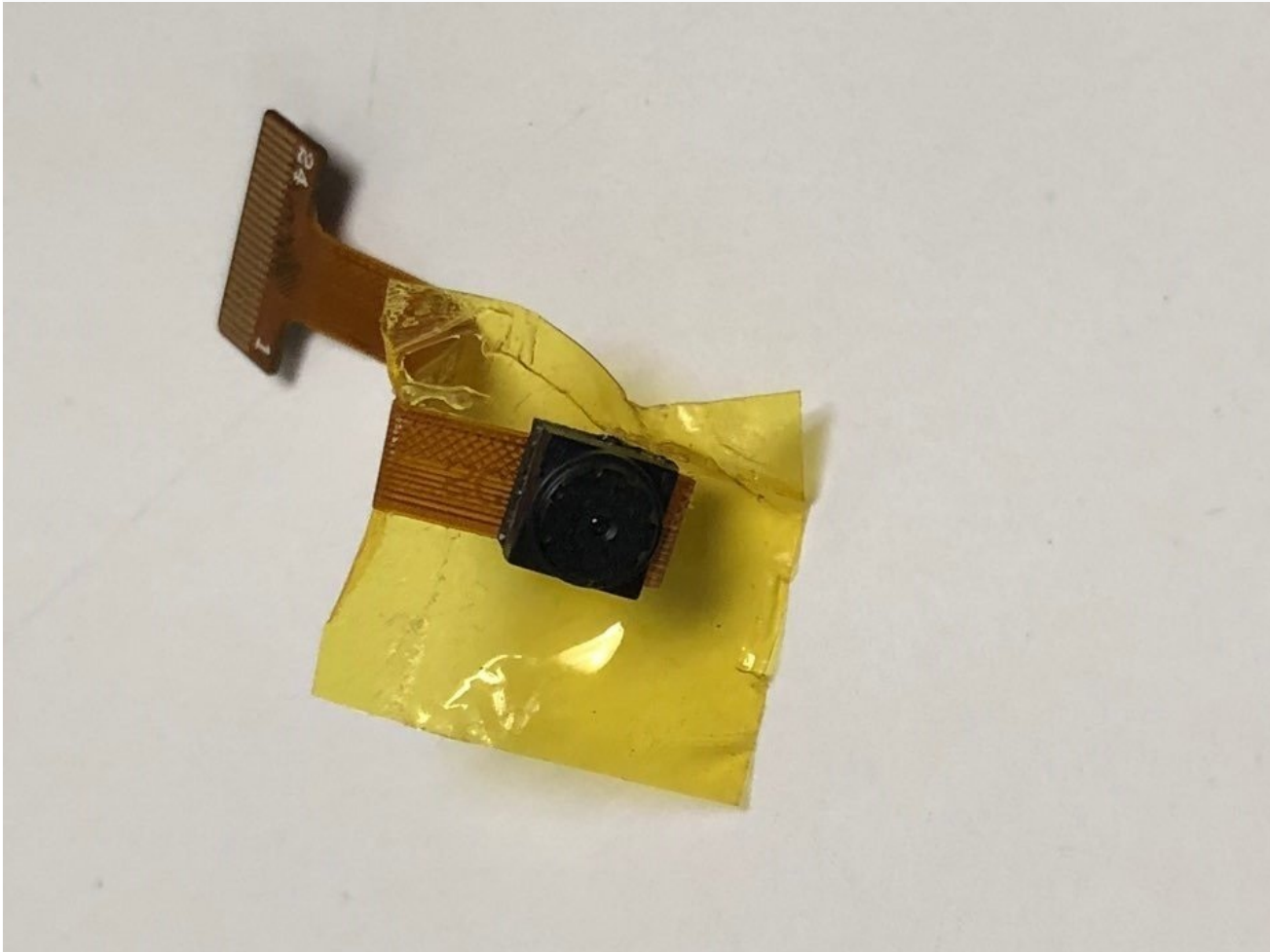




Zenithink ZTPAD ZT280 C91 Camera Replacement

This camera replacement guide should only be...

Written By: Keelie Beach



INTRODUCTION

This camera replacement guide should only be done once the prerequisite steps have been fully completed. Skipping any steps can lead to damage to your device.

TOOLS:

Phillips #00 Screwdriver (1)

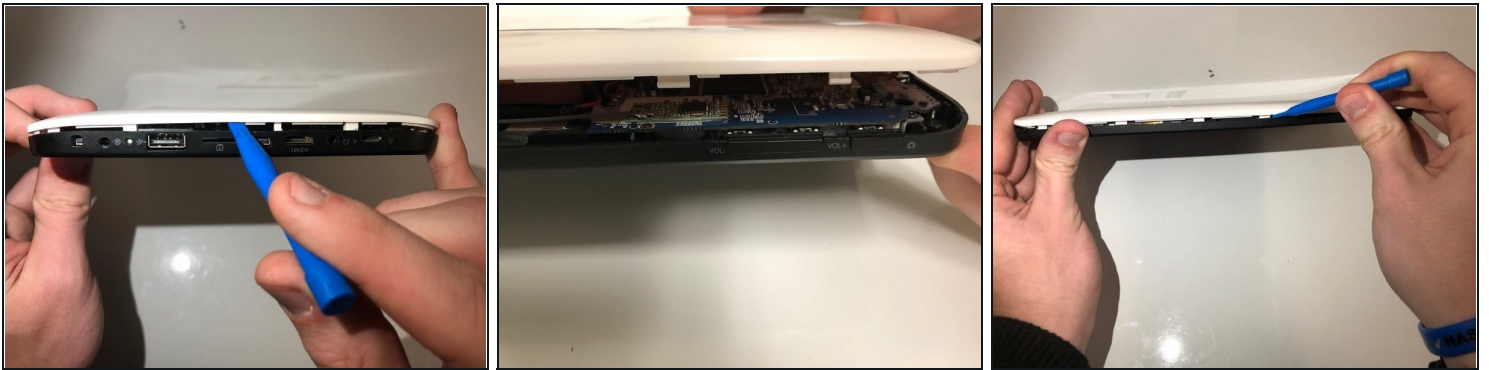
Spudger (1)

Step 1 — Back Panel



- Remove the two screws on the bottom using a Phillips #00 screwdriver.
- ⓘ For differentiation purposes, these screws are 4mm long.

Step 2



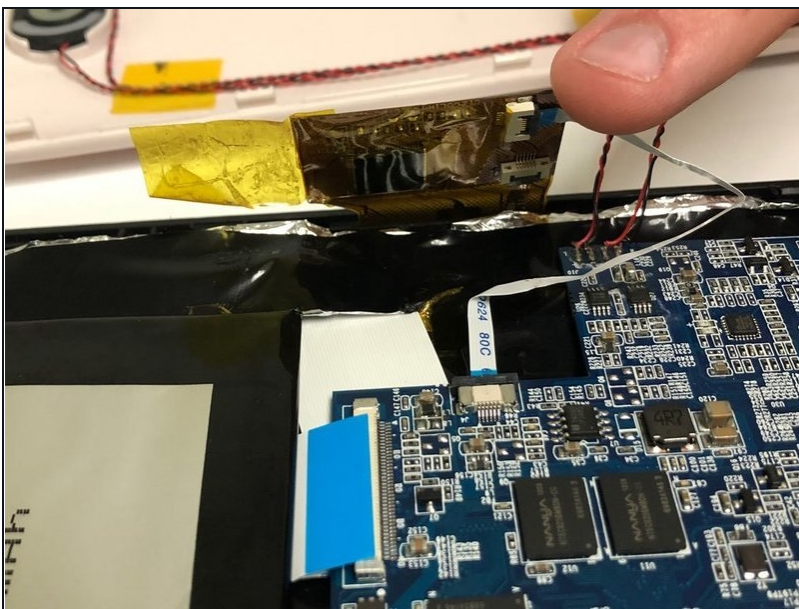
- Using a spudger, start prying the case apart by working around the edge slowly.

⚠ Be careful not to damage any of the latches that hold the back panel in place, especially if you are using a metal spudger.

ⓘ While prying, be careful to not lose the power and volume buttons; the case is the only thing holding them in place so they will easily come out once the panel has been removed

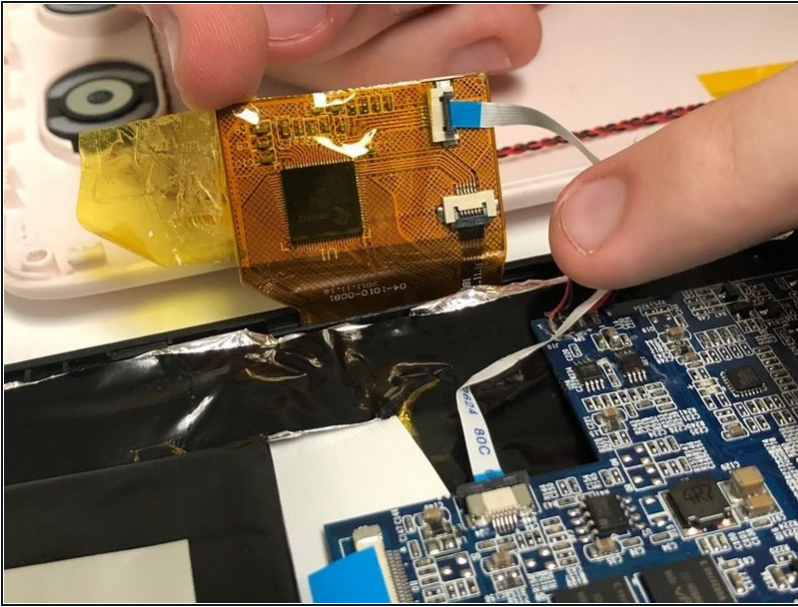
⚠ Be careful to not damage the speaker cables, they will still be connecting both panels.

Step 3 — Motherboard



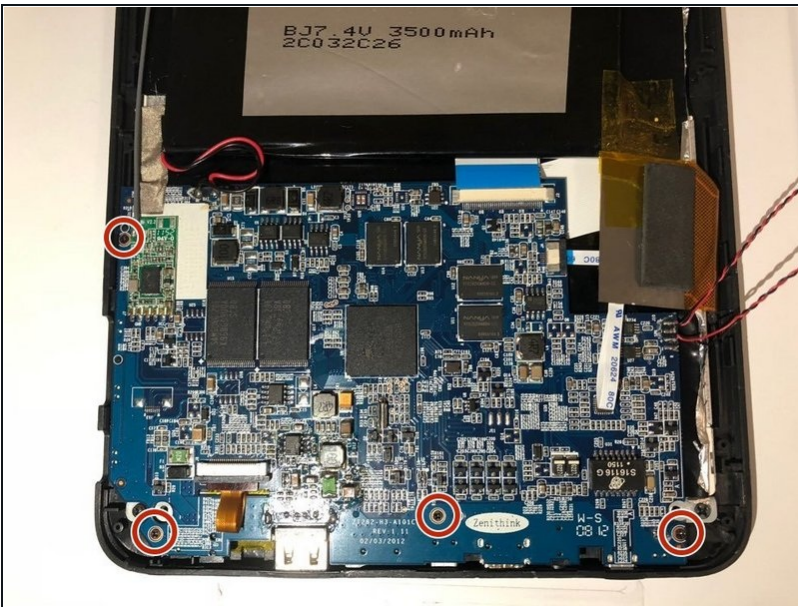
- Peel back the touch interface chip (which is on the top right of the motherboard, covered in yellow tape.)

Step 4



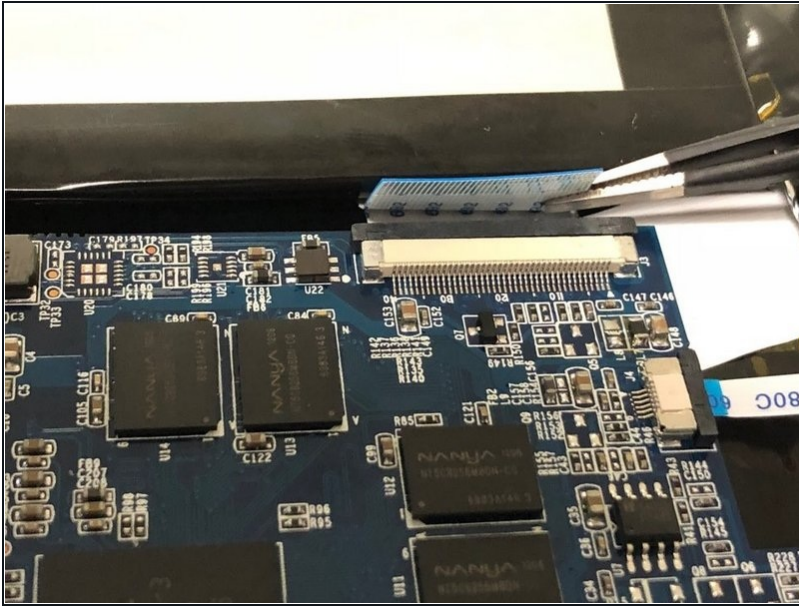
- Flip up the small gate and unplug the ribbon cable shown.

Step 5



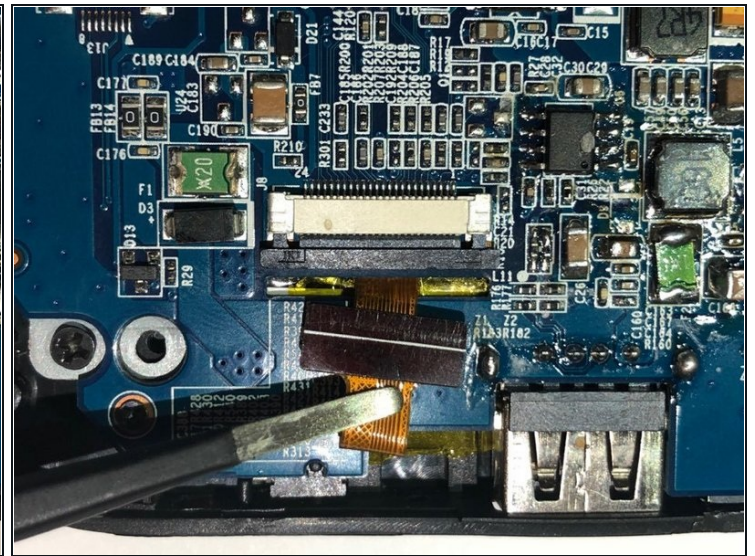
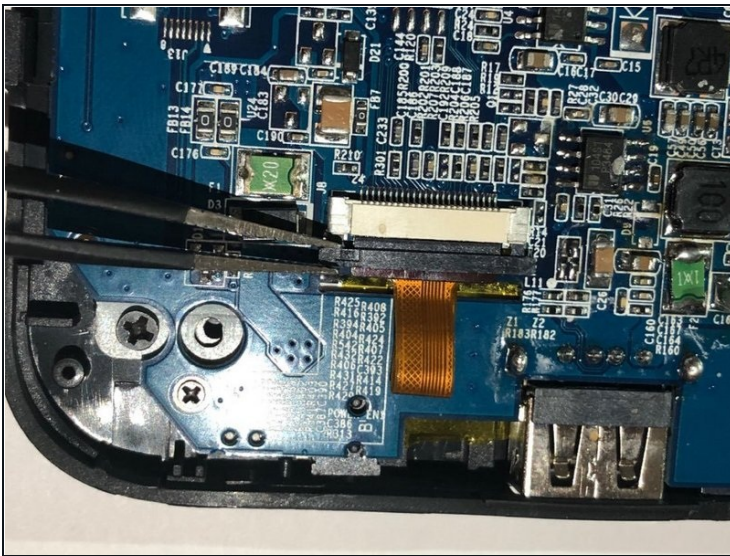
- Using a Phillips #00 screwdriver, remove the screws highlighted with the orange rings as shown in the picture.
- ① For differentiation purposes, these screws are 3.5mm long.

Step 6



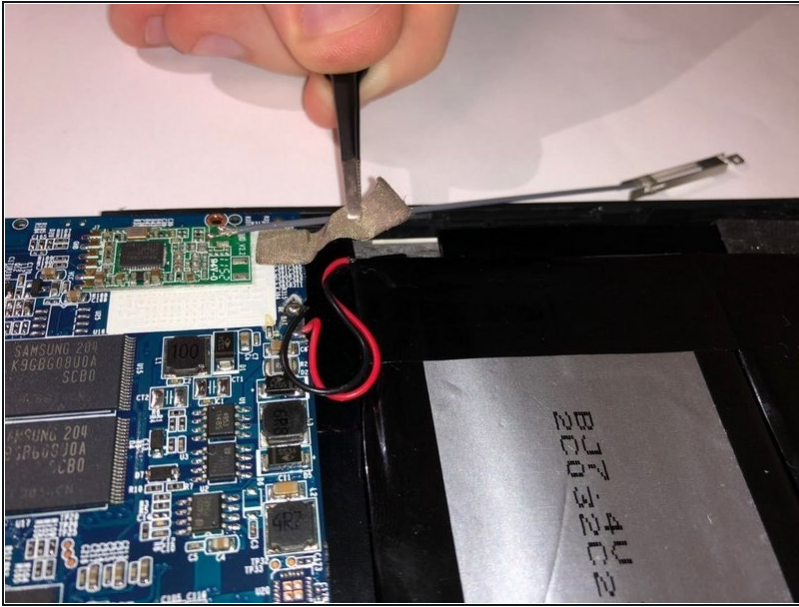
- Slide back the plastic latch for the main display cable.
- Carefully unplug the cable with [tweezers](#).

Step 7



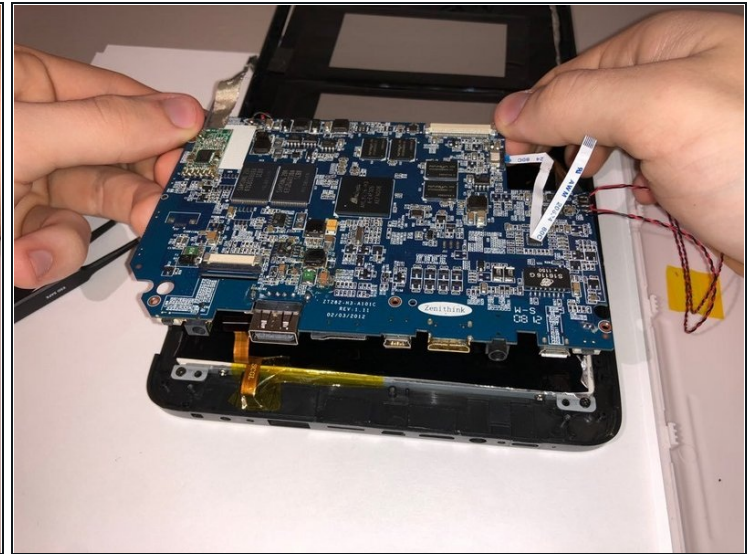
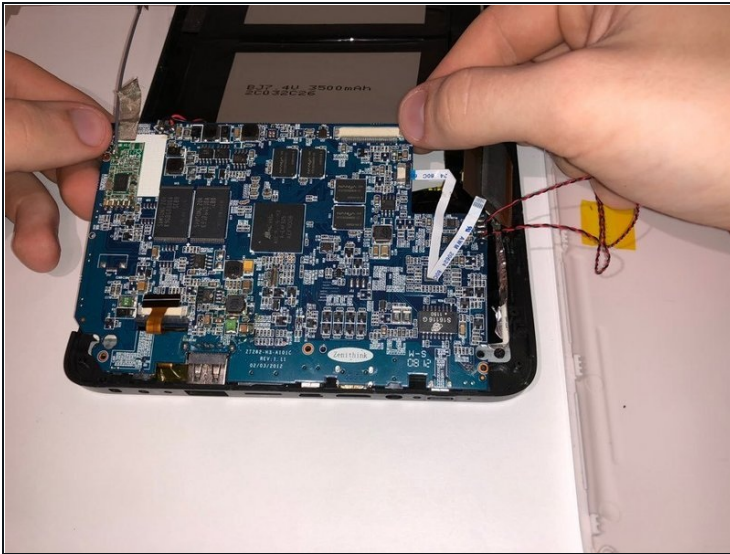
- Slide back the plastic latch for the camera cable.
- Carefully unplug the cable with tweezers.

Step 8



- Peel back the reflective tape.

Step 9



- Lift up the motherboard assembly, starting by lifting up the top.

⚠ Be careful not to damage any of the ports on the underside of the tablet.

① The camera cable will slide through a small notch and end up underneath the board.

Step 10 — Camera



- Peel back the adhesive tape holding the camera in place.
- Remove the camera from the device.

To reassemble your device, follow these instructions in reverse order.