



DYMO LabelWriter 450 Motherboard Replacement

This is a guide on how to replace the motherboard in a DYMO LabelWriter 450.

Written By: Jared Finkel



INTRODUCTION

This is a guide on how to replace the motherboard in a DYMO LabelWriter 450.



TOOLS:

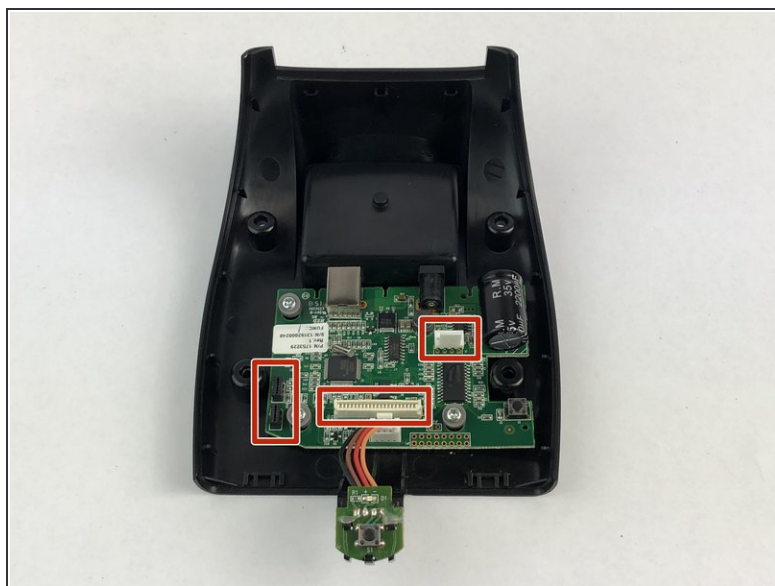
- [Spudger](#) (1)
 - [Phillips #1 Screwdriver](#) (1)
-

Step 1 — Back Plate



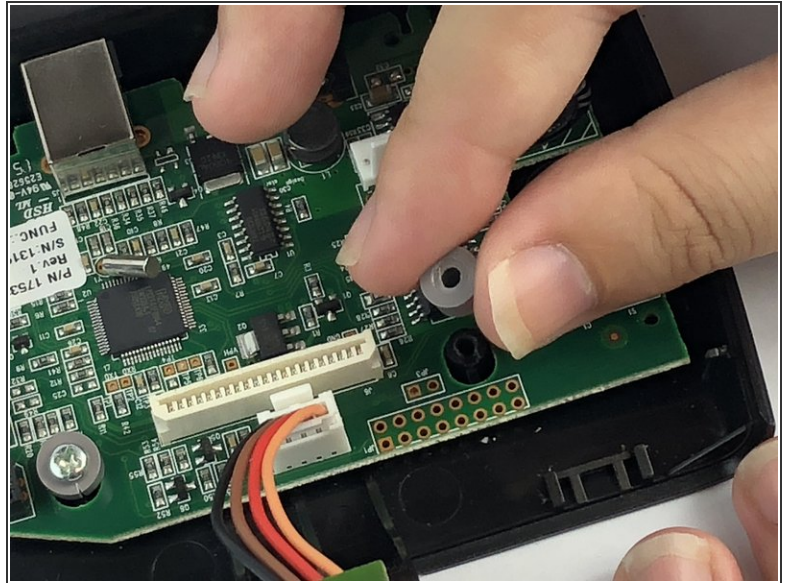
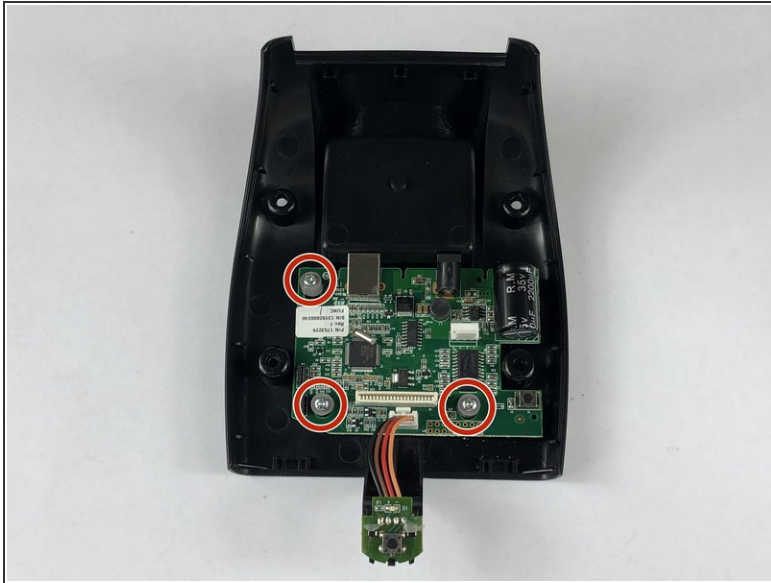
- Make sure the device is unplugged. Then, turn over the device so that the label is readable.
- Remove the two 15.7mm screws on the top of the device first, and then the two 26.5mm screws on the bottom (they are in the smaller holes and larger holes respectively) using a **Phillips #1** screwdriver.
- You need a spudger to orient the bottom screws so that they can be removed.

Step 2



- Once the Back Plate has been unscrewed, you will see the components from the top of the device plugged into the motherboard. You will only have 1-2 inches of clearance to unplug the components from the motherboard.
 - There are four components to unplug: the power cable connector, the two small no-fuss ribbon cable connectors, and the large no-fuss ribbon cable connector. The order does not matter.
- ⚠ This device has a blade located within the front panel. When handling the device, be careful not to touch the blade.**

Step 3 — Motherboard



- Unscrew the three 9.8mm screws from the motherboard, then pull out the gray spacers that are between the screws and the motherboard.

To reassemble your device, follow these instructions in reverse order.