



Gateway NV55C49u Battery Replacement

How to replace the battery on the Gateway NV55C49u.

Written By: Ethan Nall



INTRODUCTION

If your laptop charge is draining quickly, or the laptop won't turn on, use this guide to replace the battery. The battery replacement on this laptop is a simple swap because there are no screws, glue, or small parts you have to work with.

TOOLS:

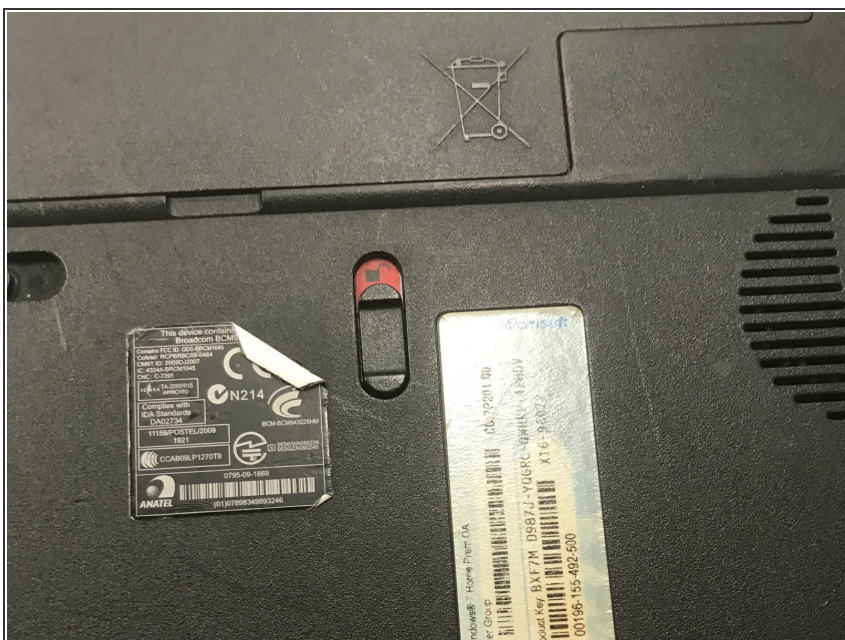
- [Fingers](#) (1)
-

Step 1 — Battery



- Flip the laptop bottom side up.

Step 2



- Switch the battery lock to show a red background with an unlock symbol

Step 3



- Flip the switch with the battery symbol on it.
- ⓘ The battery should eject if done correctly.


Step 4




- Remove the battery by lifting the battery out.

Step 5



 This battery contains harmful chemicals, so it must be disposed of properly. Please take the old battery to a waste disposal center or recycling center.

 Tip: in France, you can dispose of the old battery in the battery disposal points that can be found in a lot of supermarkets.

To reassemble your device, follow these instructions in reverse order.