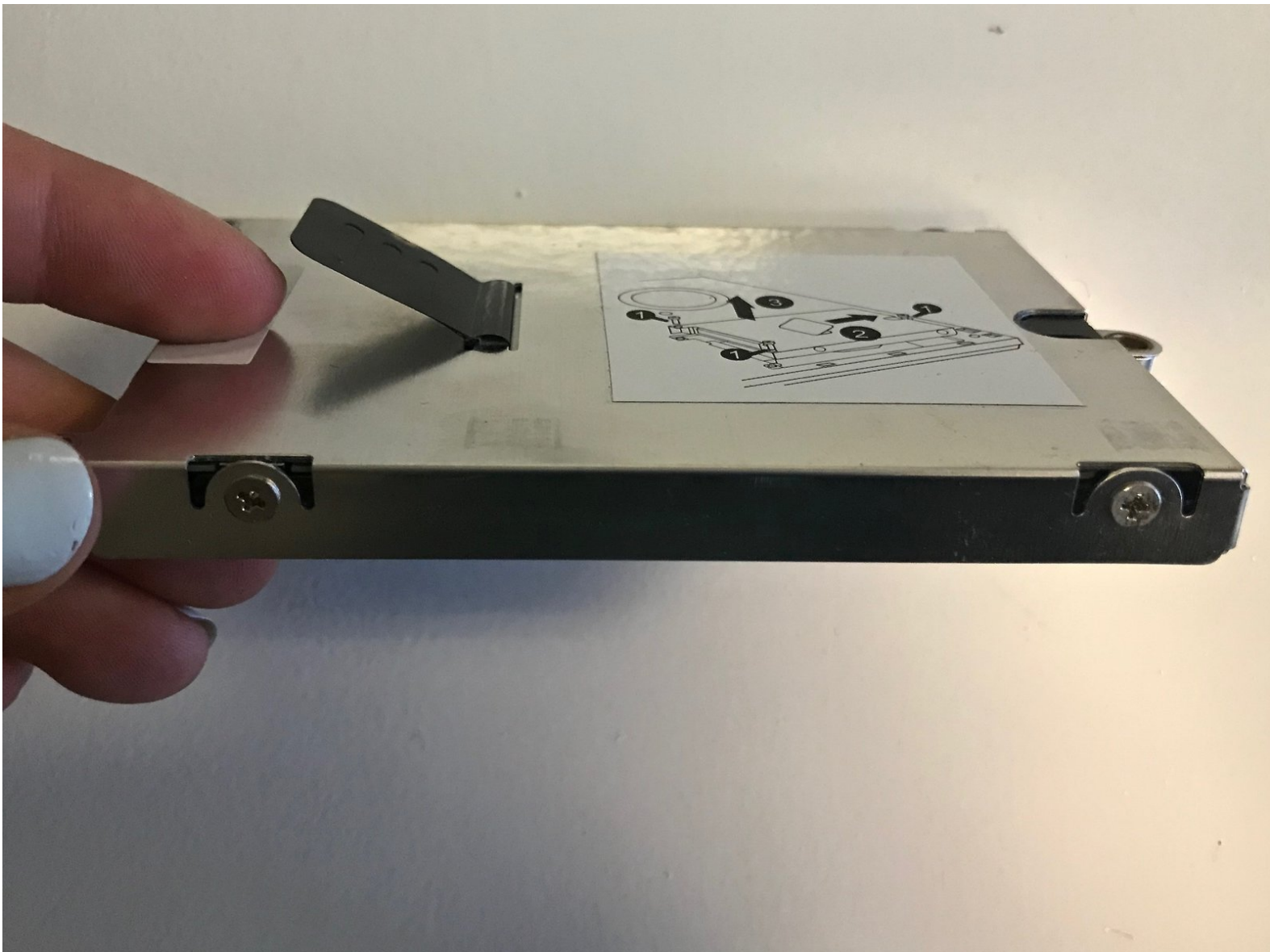




HP Probook 4425s Hard Drive Replacement

How to replace a HP Probook 4425s hard drive.

Written By: Kaity



INTRODUCTION

This guide details how to remove and replace the hard drive on your HP Probook 4425s.



TOOLS:

- [Phillips #0 Screwdriver](#) (1)
-

Step 1 — Hard Drive



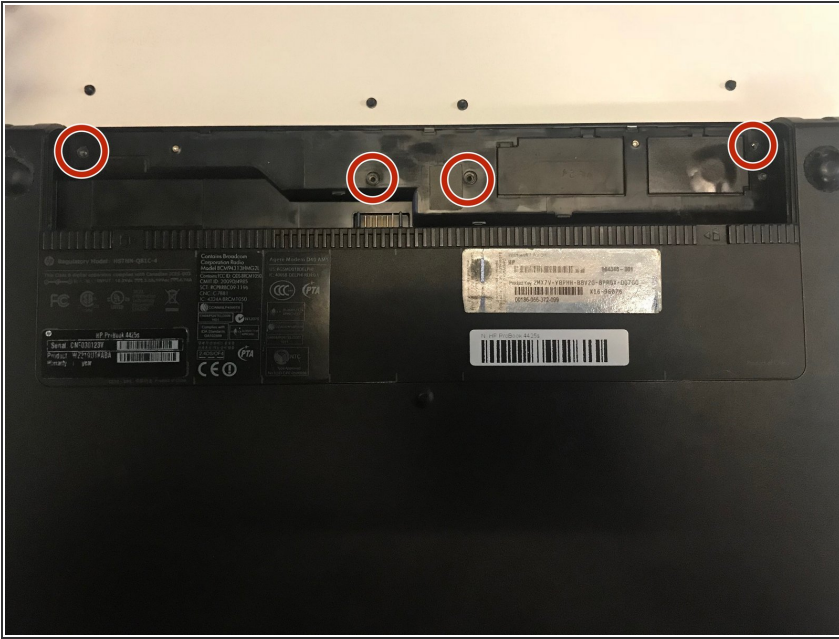
- Turn the laptop off.
- Flip the laptop over.

Step 2



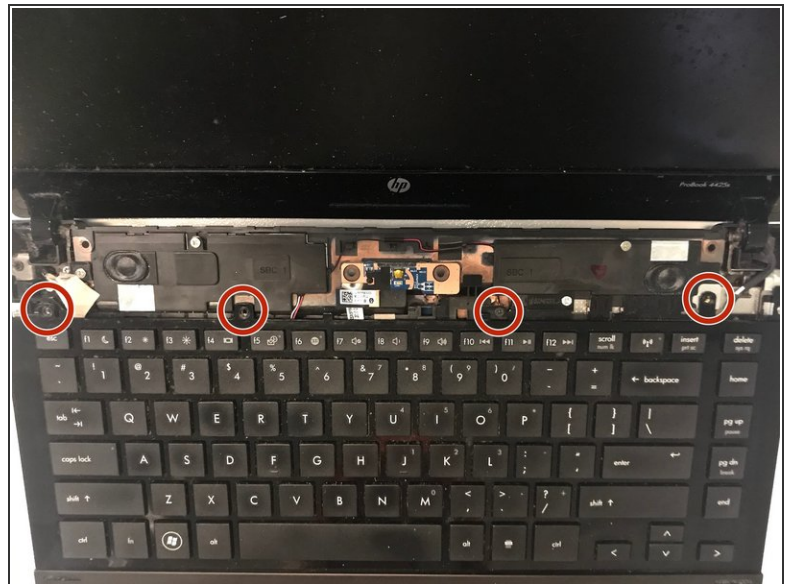
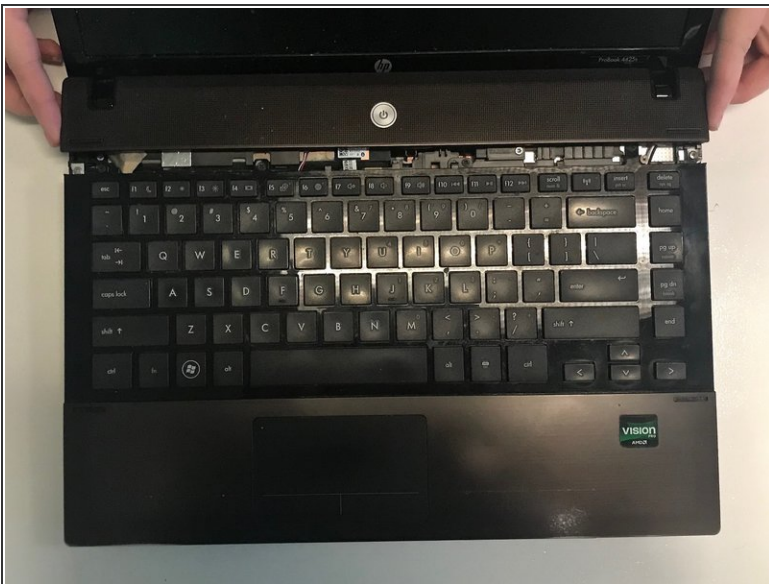
- Remove the battery.

Step 3



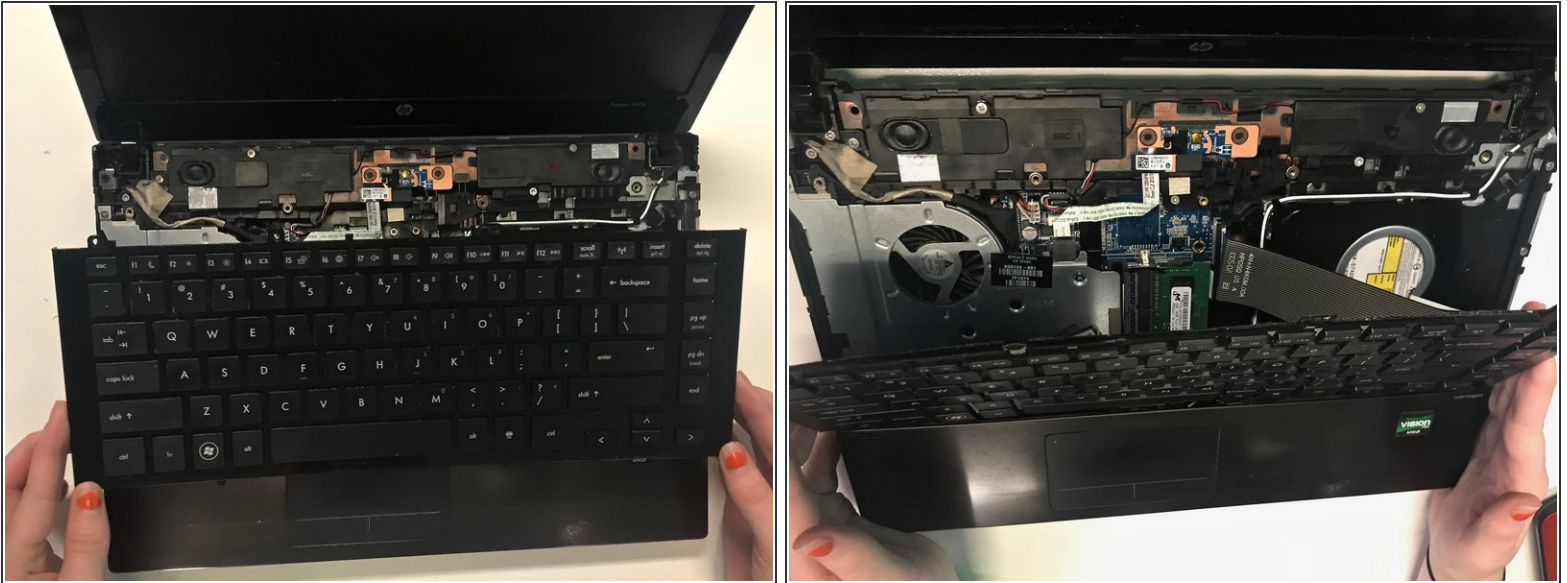
- Remove the four 3 mm Phillips head screws that secure the switch cover in place.

Step 4



- Flip over and open the laptop.
- Remove the now loosened cover by grabbing both sides and sliding up.
- Remove the four 3mm Phillips head black screws directly above the keyboard.

Step 5



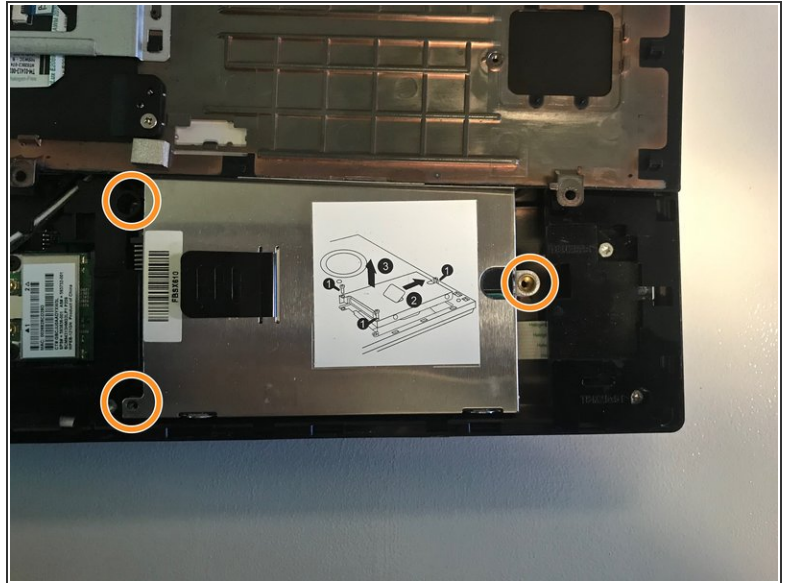
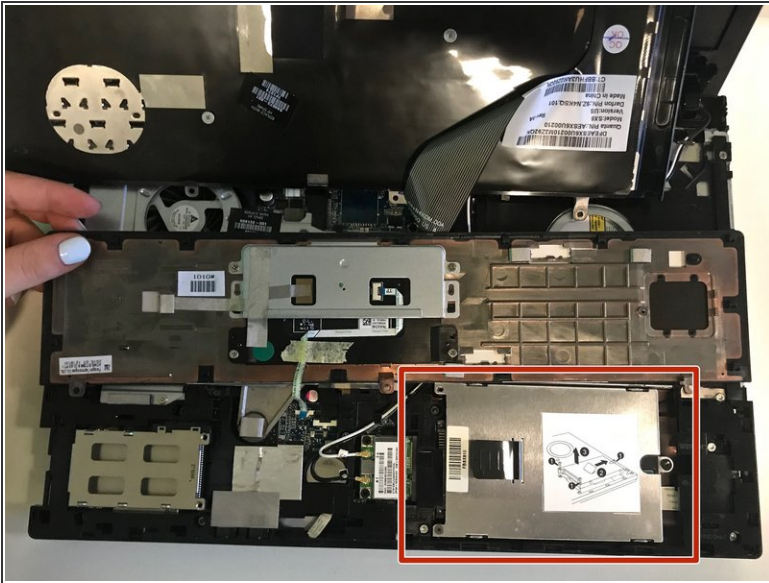
- Carefully remove the keyboard by sliding it up towards the screen of the computer in order to release the keyboard ribbon cable.

Step 6



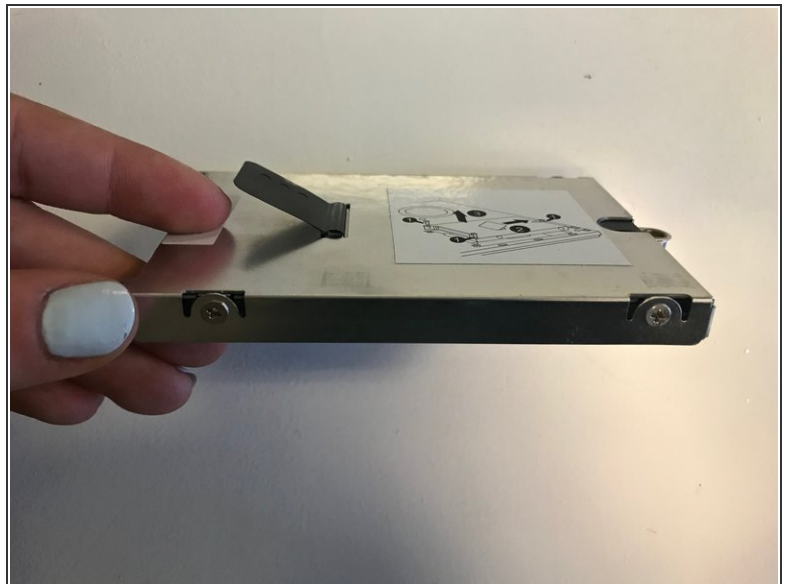
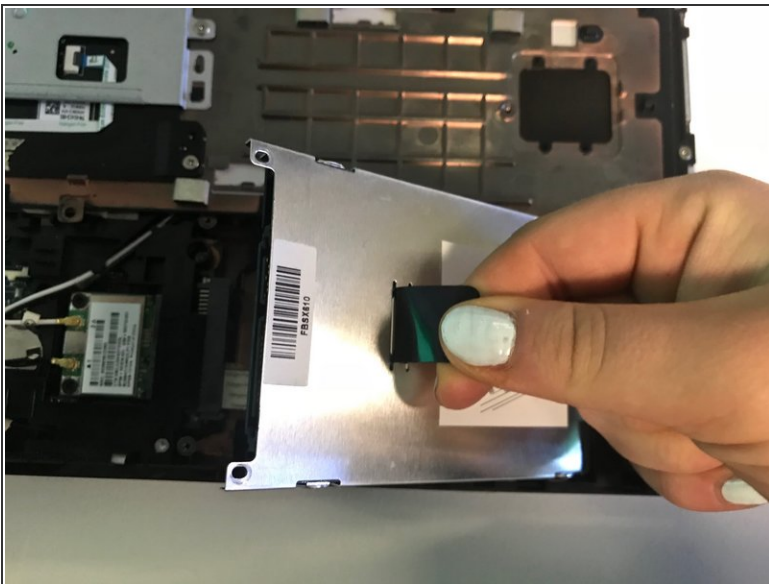
- Remove the three black 3 mm Phillips head screws from the under the keyboard that are directly above the mouse pad.
- Carefully remove the mouse pad.

Step 7



- The hard drive should be located on the right side of the laptop under the mouse pad.
- Remove the two black 2 mm Phillips screws holding the hard drive in place on the left side, and remove the larger Phillips head screw on the right side of the hard drive.

Step 8



- Remove the hard drive.

To reassemble your device, follow these instructions in reverse order.