



Samsung Galaxy On5 Camera Replacement

The Samsung Galaxy On5 has two easily replaceable cameras (front- and rear-facing).

Written By: The Dark Night part 2



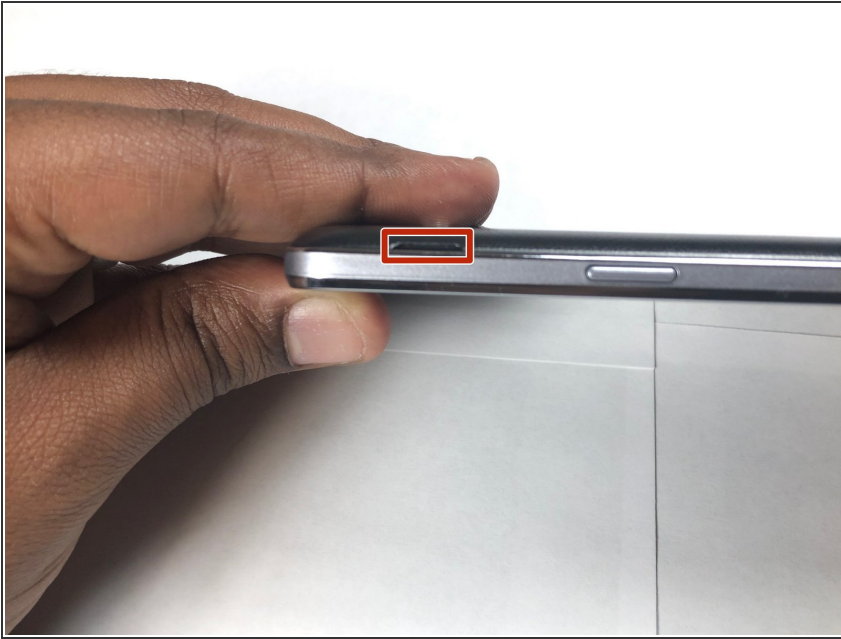
INTRODUCTION

The Samsung Galaxy On5 comes with two cameras, one front-facing and one rear-facing camera. This guide will walk you through replacing both.

TOOLS:

- [iFixit Opening Tools](#) (1)
 - [iFixit Opening Picks set of 6](#) (1)
 - [Spudger](#) (1)
 - [Phillips #00 Screwdriver](#) (1)
-

Step 1 — Battery



- Locate the side notch that allows you to open the back casing.

Step 2



- Use a plastic prying tool or your fingernail to pop the back cover off of the phone.

Step 3



- Locate the battery notch and remove the battery, using either your finger or a plastic prying tool.
- ⚠ Be careful not to puncture the battery. Lithium-ion batteries are highly flammable when exposed to oxygen.

Step 4 — Speaker




- ☑ Before disassembling the phone, take out the SIM card and microSD card.
 - Use a plastic pry tool to slide both of the cards out.
- ⚠ Do not use a metal pry tool. Using this could cause damage to the cards and/or card holder.

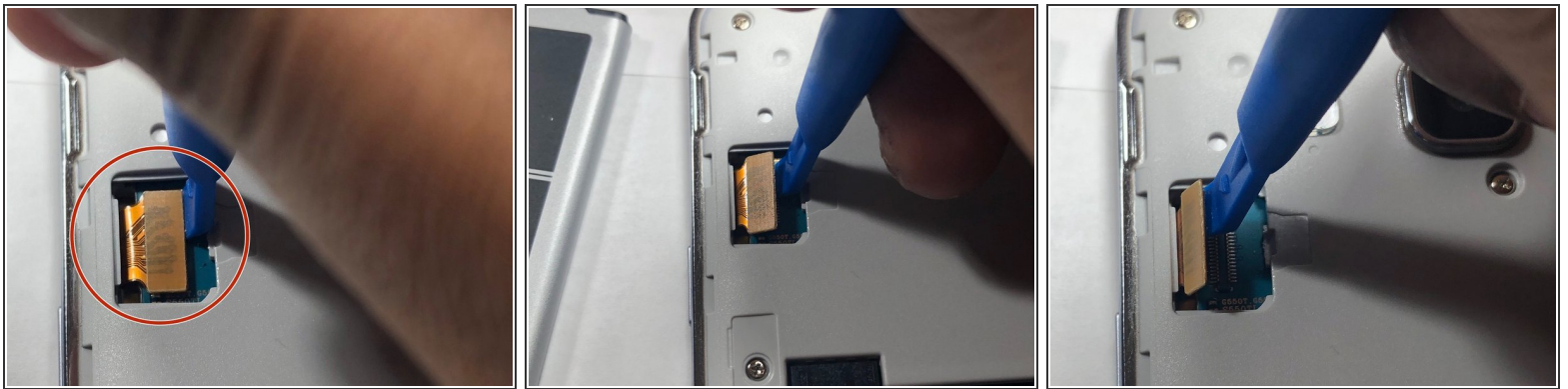
Step 5




- Use the plastic Spudger tool to pry open the LCD ribbon cable cover.

 This part might be a little hard to open. Take your time and be careful not to push too hard as doing so could result in damage to the ribbon.

Step 6

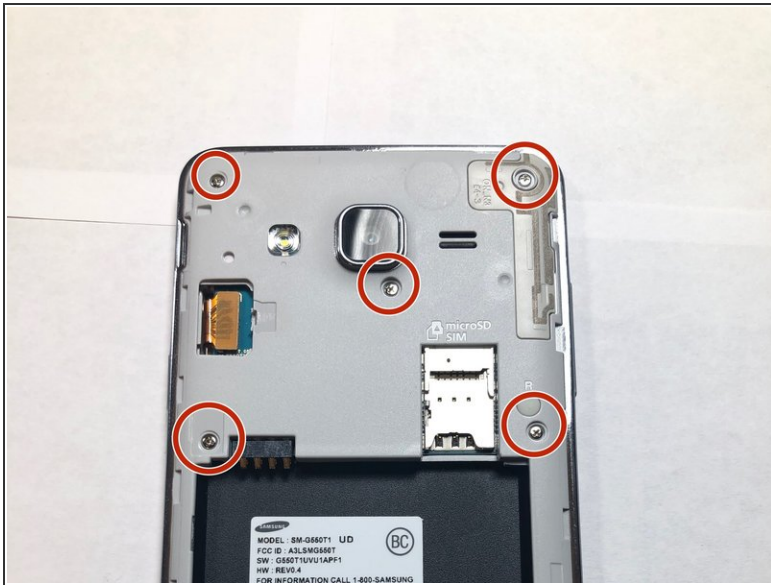


- Using a plastic pry tool, carefully pry the LCD ribbon cable from the logic board.


 Do not use a metal pry tool. Metal pry tools can cause damage to the logic board and to the ribbon cable.

 This LCD ribbon cable sends signal from the logic board to the LCD screen.

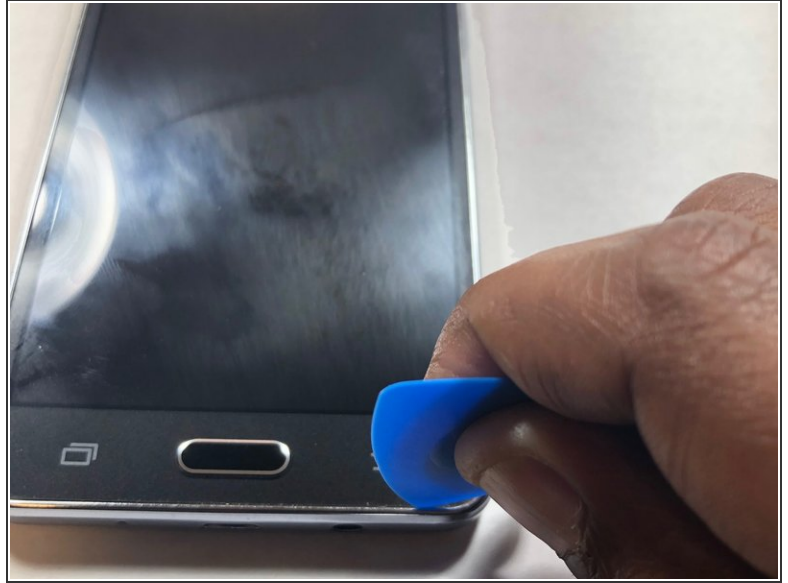
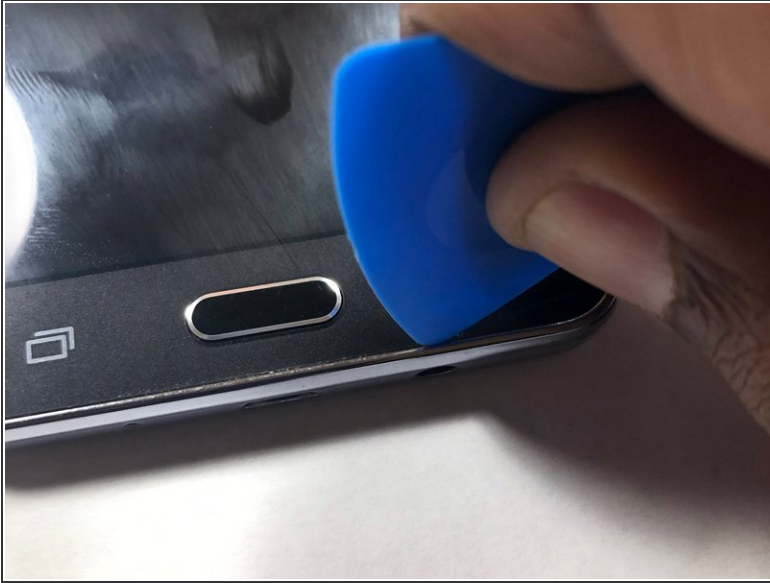
Step 7



- Take a Phillips #00 head and remove all 9 screws. Once done place them aside where you won't lose them.

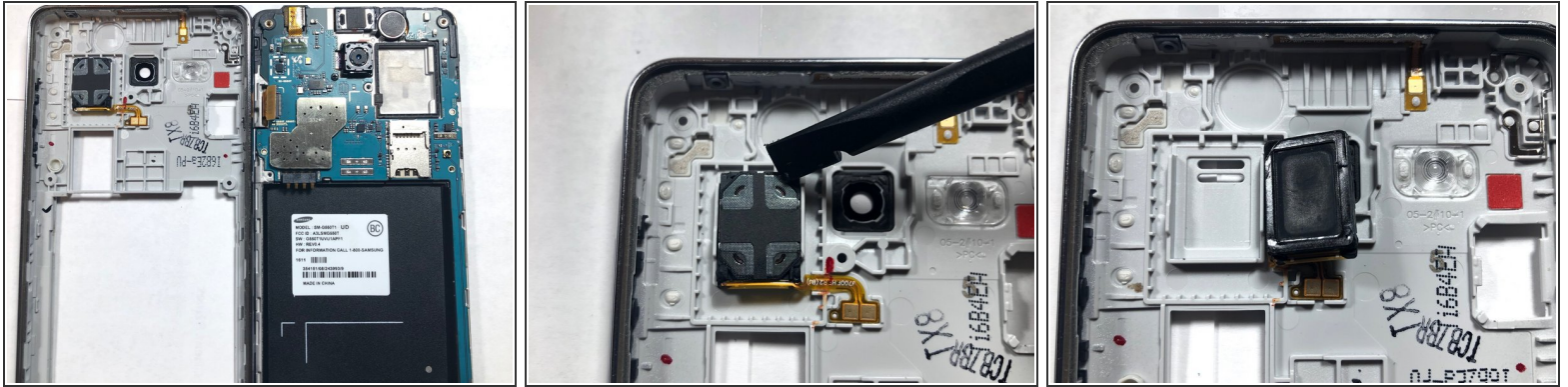
 All 9 screws are the same size.

Step 8



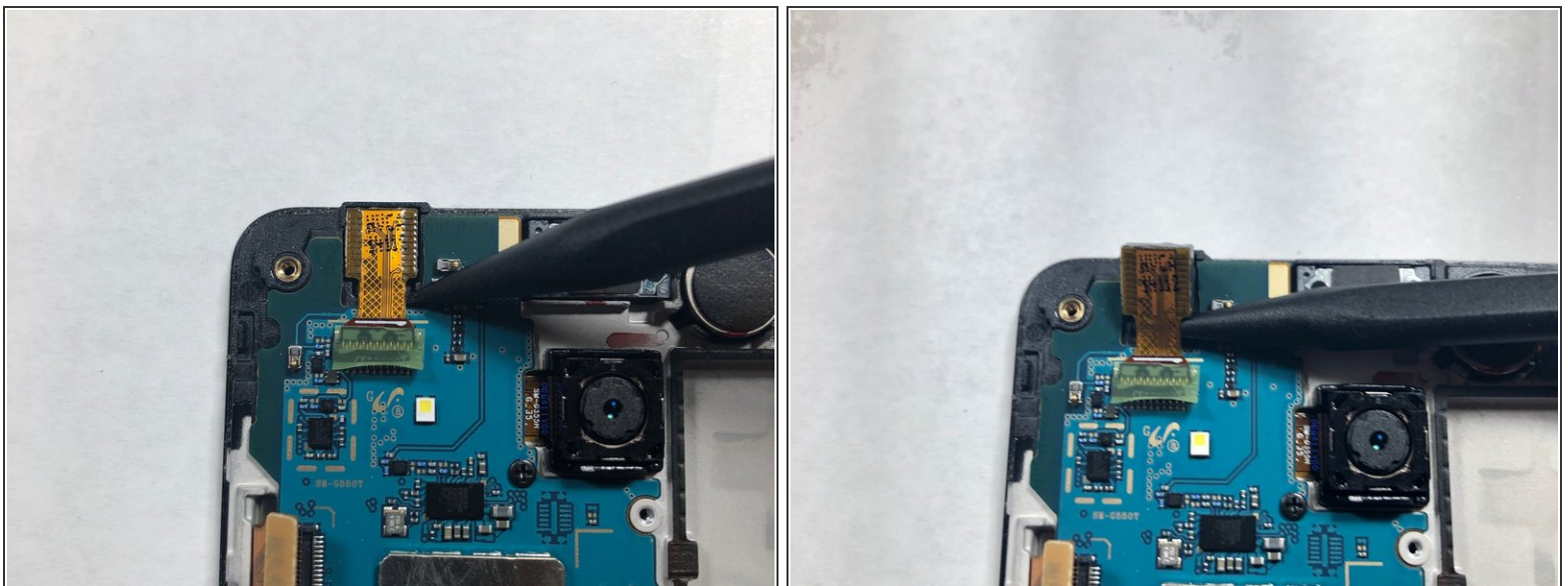
- Use an iFixit plastic pick to pry away the LCD from the back assembly.
- ⓘ This process will take some time due to the glue that's holding the LCD and back assembly together. Slowly move around the edge of the screen to loosen the glue up.
- ⓘ If you have a heat gun, you can use it to heat up the glue. Heating up the glue makes it easier to separate the LCD and back assembly.

Step 9



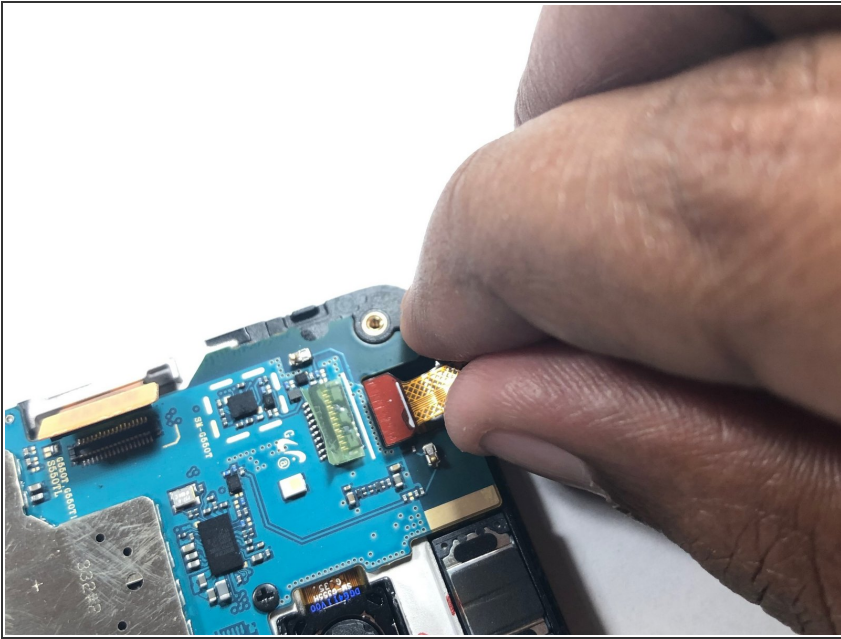
- Once both the LCD and back assembly come apart, look at the back assembly where the speaker is located.
- Once located, take the plastic pry tool to remove the speaker from its housing and replace it with a new one.

Step 10 — Front-Facing Camera



- Use a plastic pry tool to lift the front-facing camera from its housing.
- ⓘ Always use plastic pry tool over metal tools when working on delicate electronic devices.

Step 11



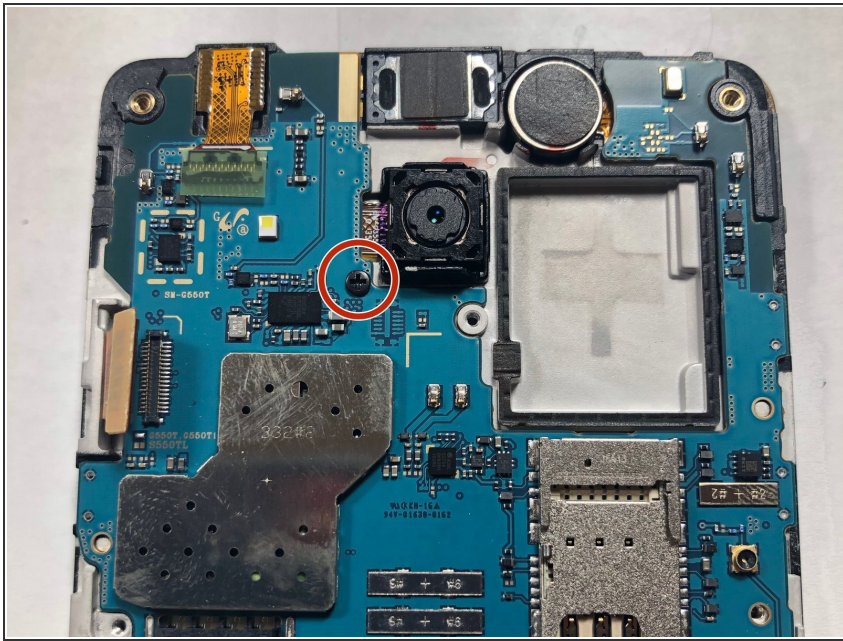
- Once the camera is out of the housing, disconnect the camera from the logic board.

Step 12



- You have now successfully removed the front-facing camera.

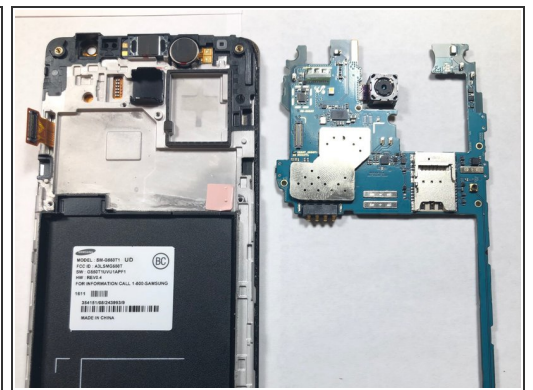
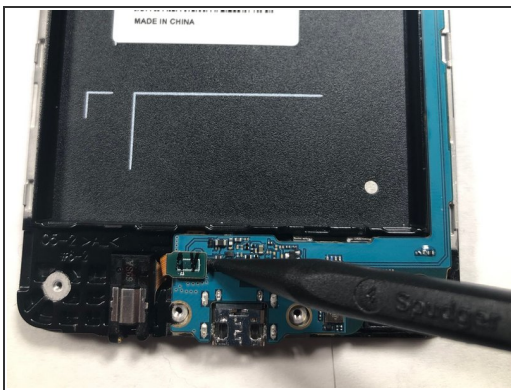
Step 13 — Rear-Facing Camera



- Using a Phillips #00 screwdriver, remove the screw securing the rear-facing camera.

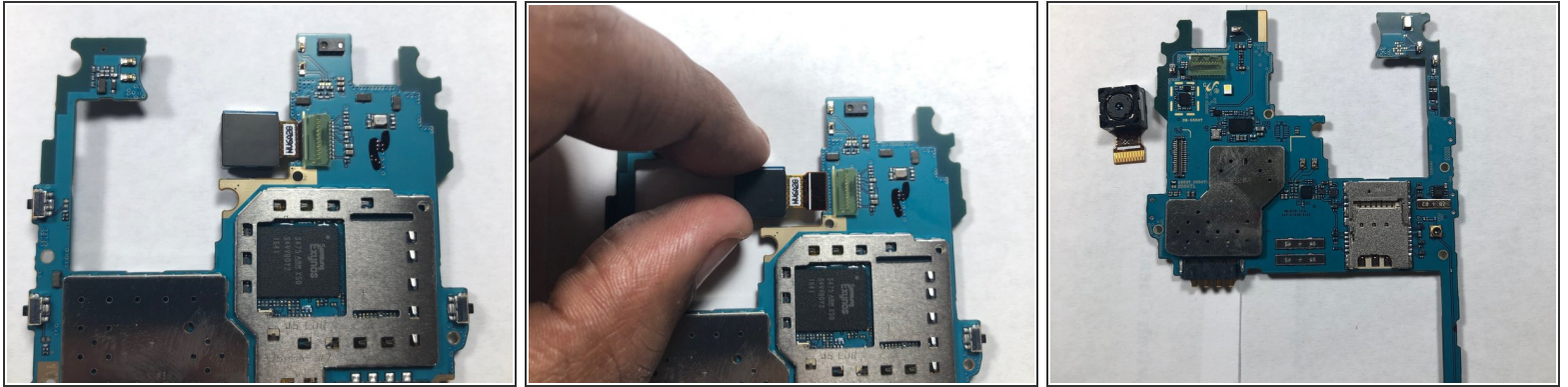
⚠ When using a metal tool always be aware of where you're placing the bit. Damage to the motherboard can be irreparable with normal tools.

Step 14



- Use a plastic pry tool to disconnect the headphone ribbon from the motherboard.
- Remove the motherboard from the LCD housing by lifting up from the ends of the logic board.

Step 15



- Flip the logic board so the camera lens is facing down rather than at you.
- Use your finger to remove the camera from its connection on the logic board.

That's it, now you've removed both the front and rear facing cameras on your device! To reassemble your device, follow these instructions in reverse order.