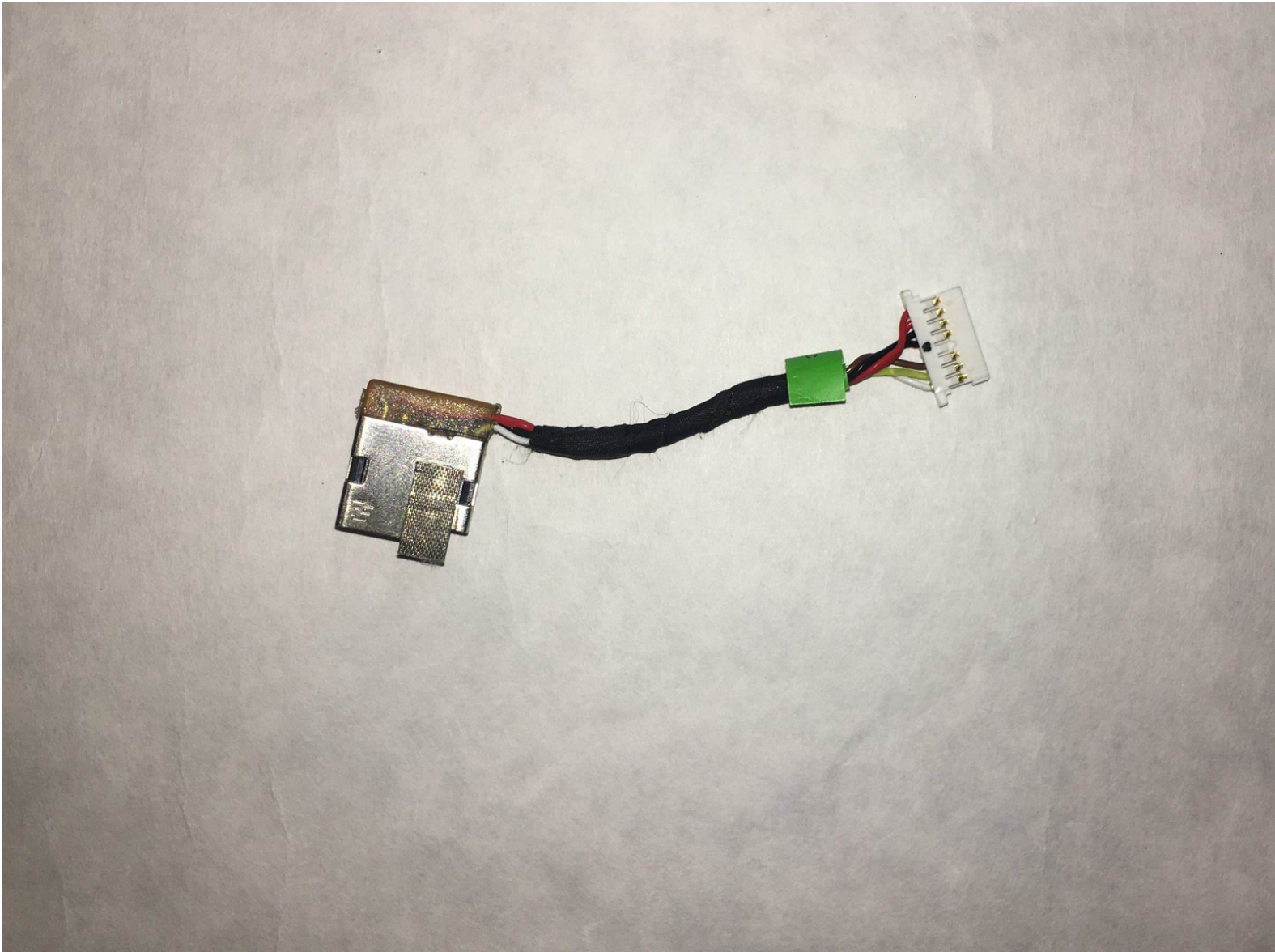




# HP Envy x360 m6-aq005dx Power Port Replacement

This guide will demonstrate how to remove the power port

Written By: Bradley Braganza



---

## INTRODUCTION

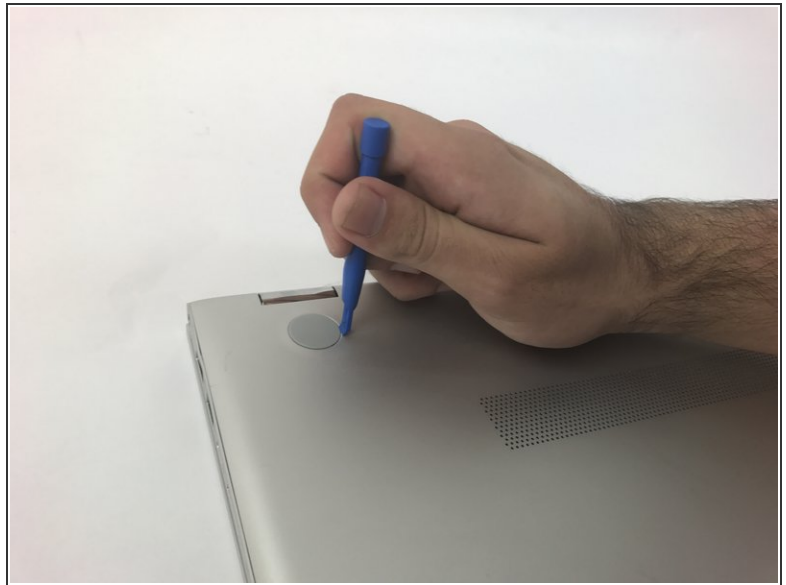
The power port is essential in recharging the computer's battery. This guide will explain how to properly remove and replace the power port component of the computer.

---

### TOOLS:

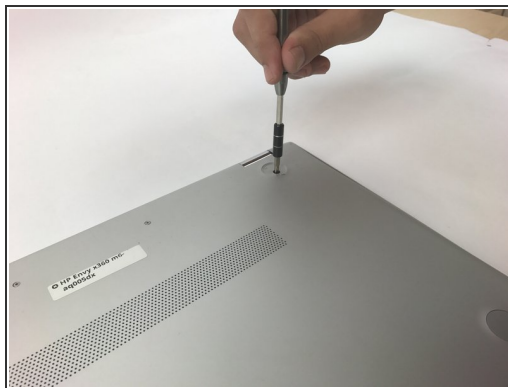
- [iFixit Opening Tools](#) (1)
  - [JIS #1](#) (1)
  - [T5 Torx Screwdriver](#) (1)
  - [Tweezers](#) (1)
  - [Phillips #0 Screwdriver](#) (1)
-

## Step 1 — Back Panel



- Use the plastic opening tool to remove the gray rubber pads on the bottom of the laptop. For our device we only needed to remove the two at the top.

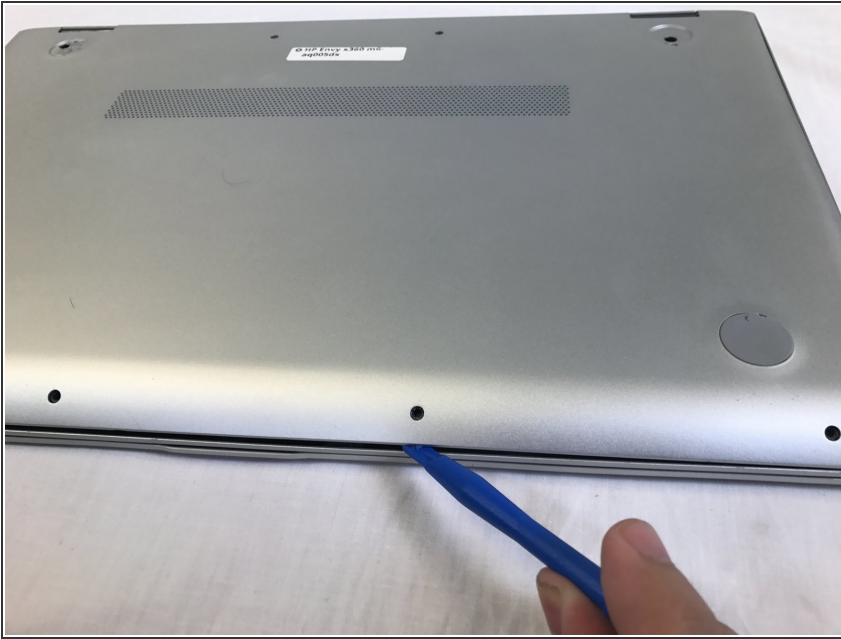
## Step 2



- Use a Torx T5 screwdriver to remove the six 5.1 mm screws.
- Use a JIS #1 screwdriver to remove the two 7.2mm screws.

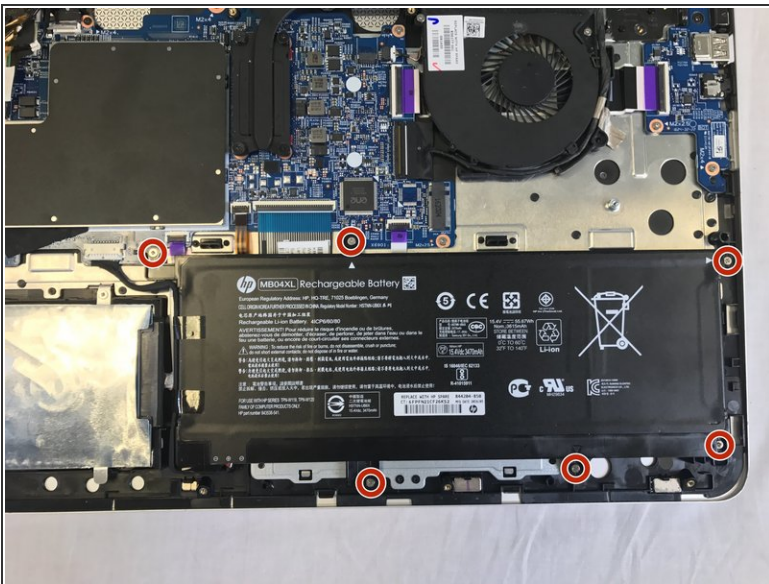


## Step 3



- Use a plastic opening tool to pry open the case. Go slowly around the edge. You will hear popping noises, such as are due to popping open the small joints that keep the cover attached.

## Step 4 — Battery



- Use a JIS #1 screwdriver to remove the six 4.7 mm screws.

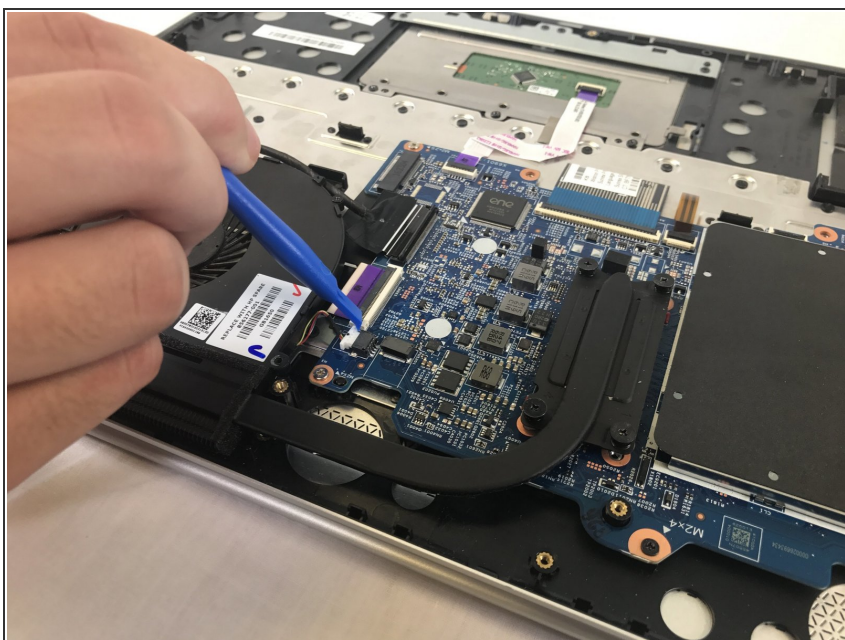
## Step 5



⚠ Battery might cause a small electric shock.

- Use tweezers to disconnect the battery from the motherboard.

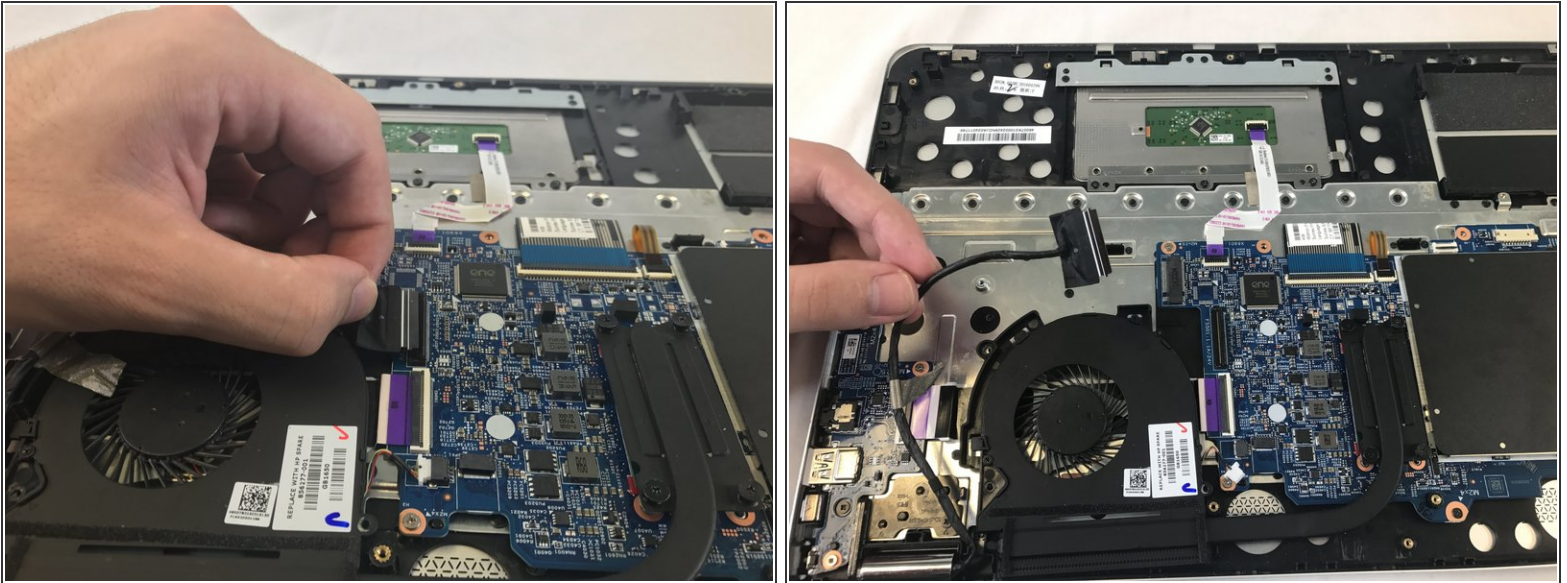
## Step 6 — Fan



- Use the plastic opening tool to disconnect the power cable from the fan.

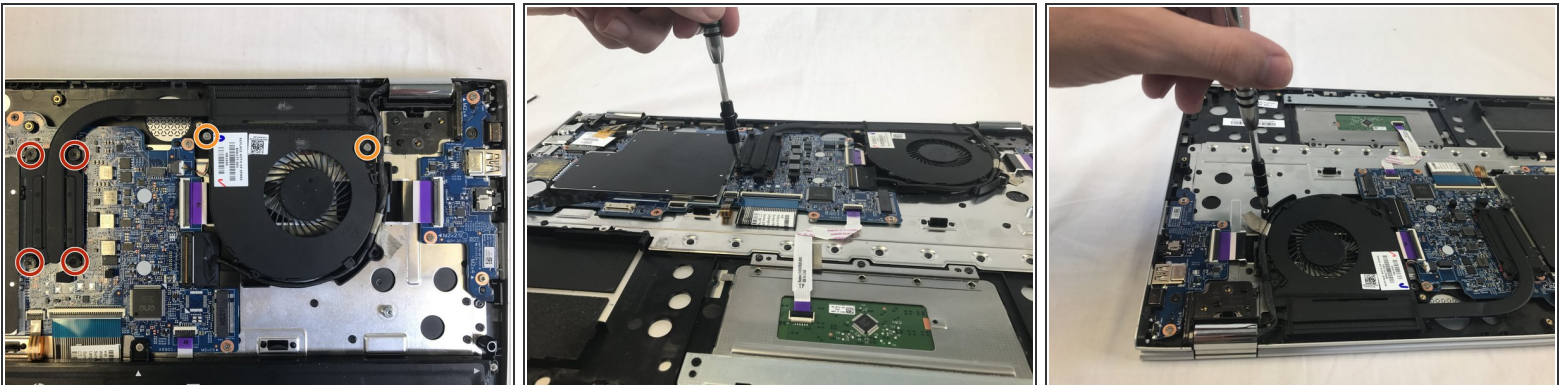


## Step 7



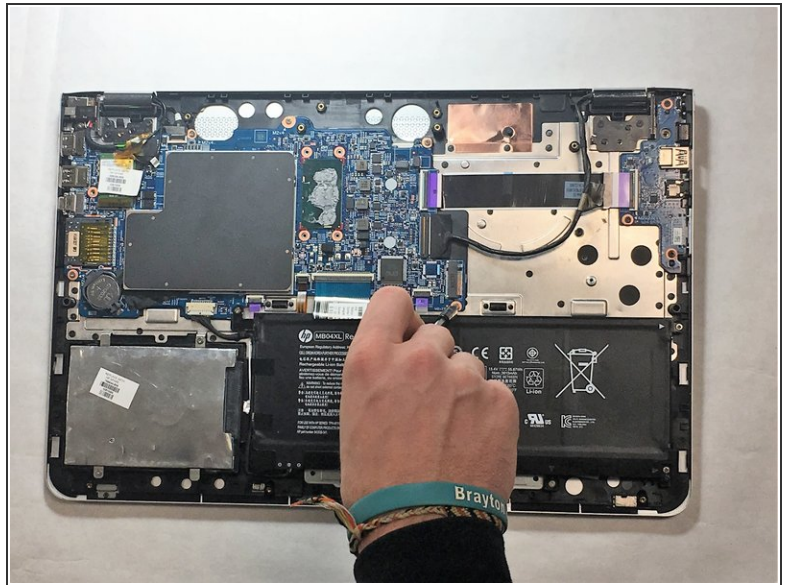
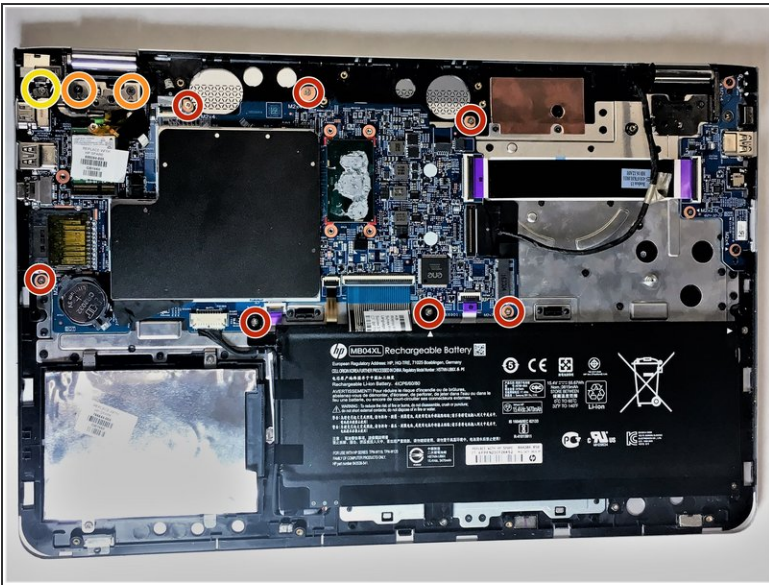
- Use your fingers to lightly pull the cable and disconnect it from the motherboard.

## Step 8



- Use a Phillips #0 screwdriver to loosen the four 6.5 mm screws.
  - ⓘ Do not fully remove the screws, just enough to be unattached from the motherboard.
- Use a JIS #1 screwdriver to remove the two 7.7 mm screws.

## Step 9 — Motherboard



- Use a JIS #1 screwdriver to remove the 4.7mm screws from the indicated positions.
- Use the JIS #1 screwdriver to remove the 7.7mm screws from the indicated positions.
- Use the JIS #1 screwdriver to remove the 4.4mm screws from the indicated positions.

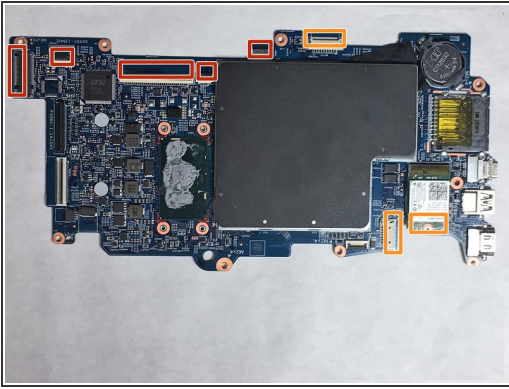
## Step 10



- Using your hand, lift the screen hinge located in the top left corner. This will allow for easier removal of the motherboard.

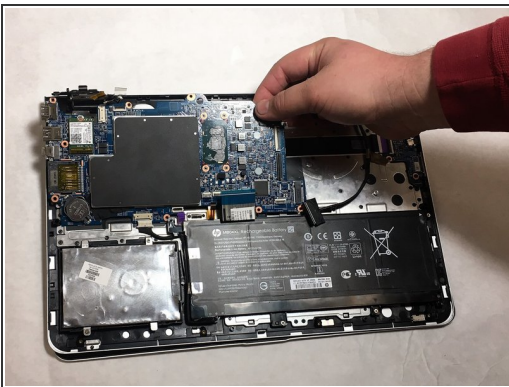


## Step 11



- Flip the indicated colored latches with iFixit Opening Tools, then use tweezers to release the cables attached to the motherboard by gently pulling backward.
- Use the pointed tweezer to release the plug-in connectors by gently gripping the plug and pulling backwards.

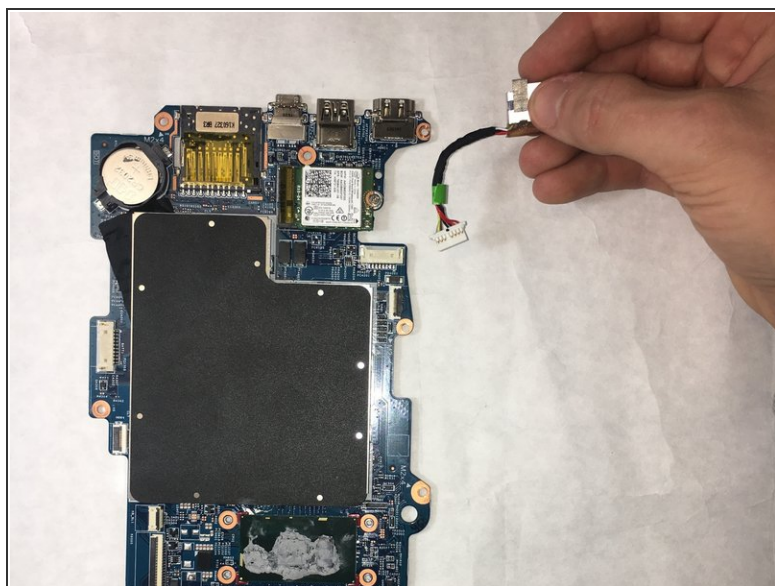
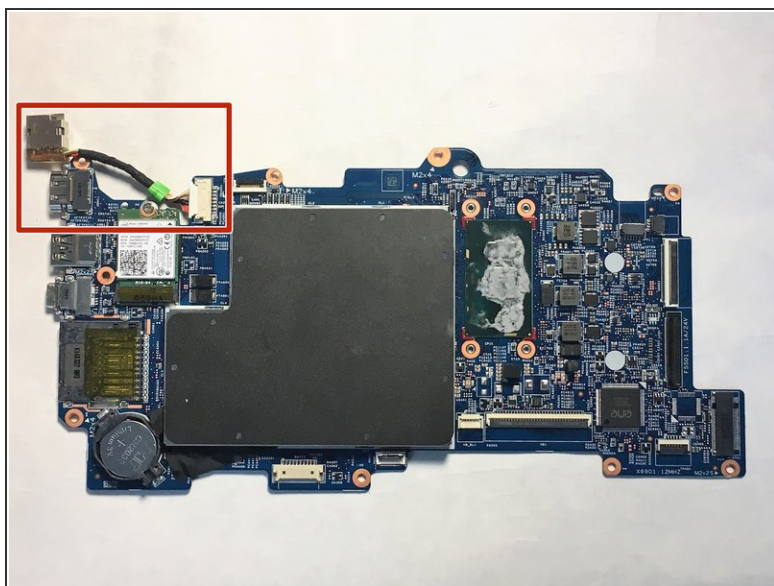
## Step 12



- Using your hand, lift and pull the motherboard from inside your computer.



## Step 13 — Power Port



- Using your fingers, detach the power port from the motherboard.

To reassemble your device, follow these instructions in reverse order.