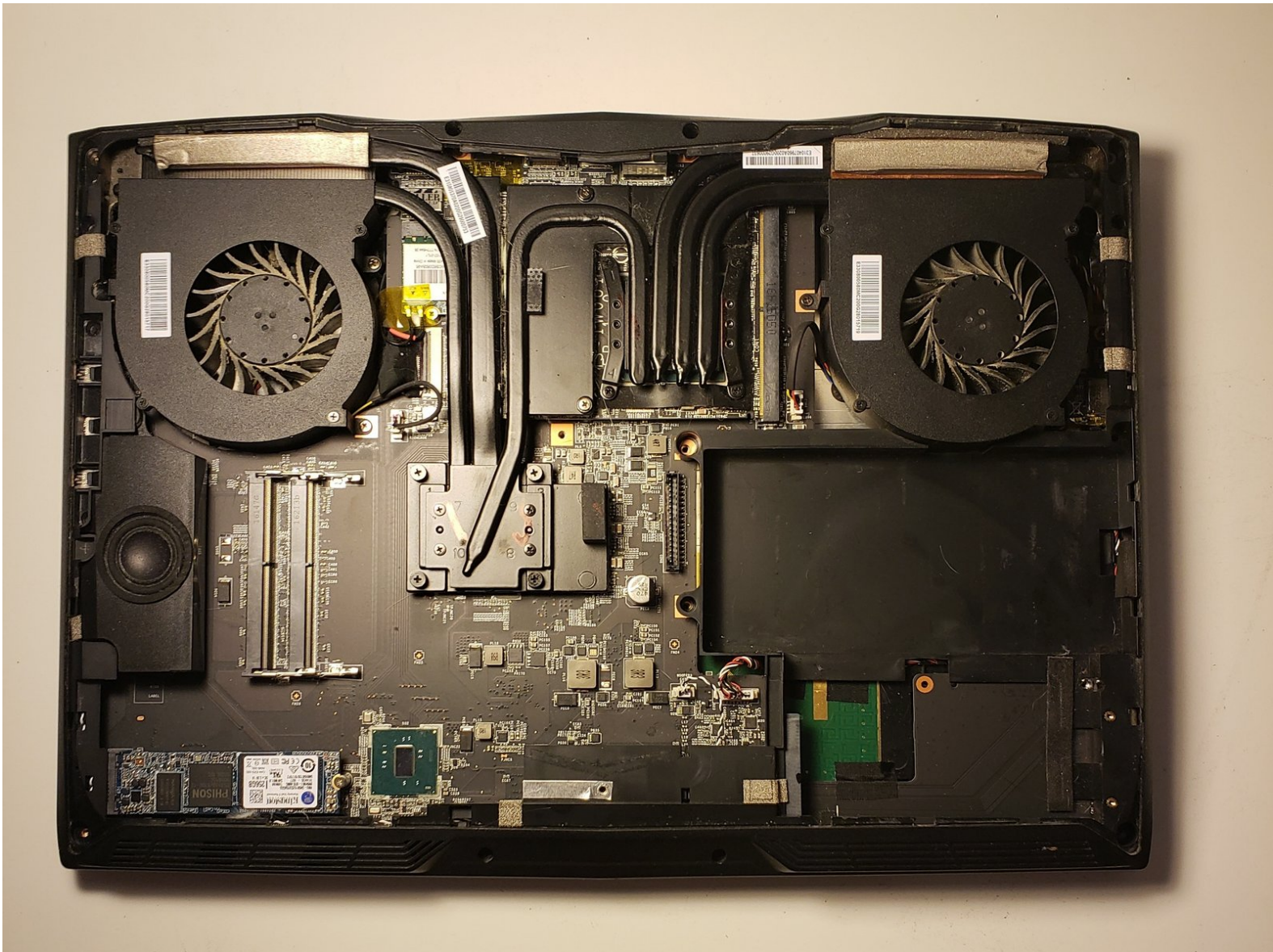




MSI GT62VR 6RD Dominator Speaker Replacement

This guide will show you how to remove the speaker inside the MSI GT62VR 6RD Dominator.

Written By: emmanuel adgebno







TOOLS:

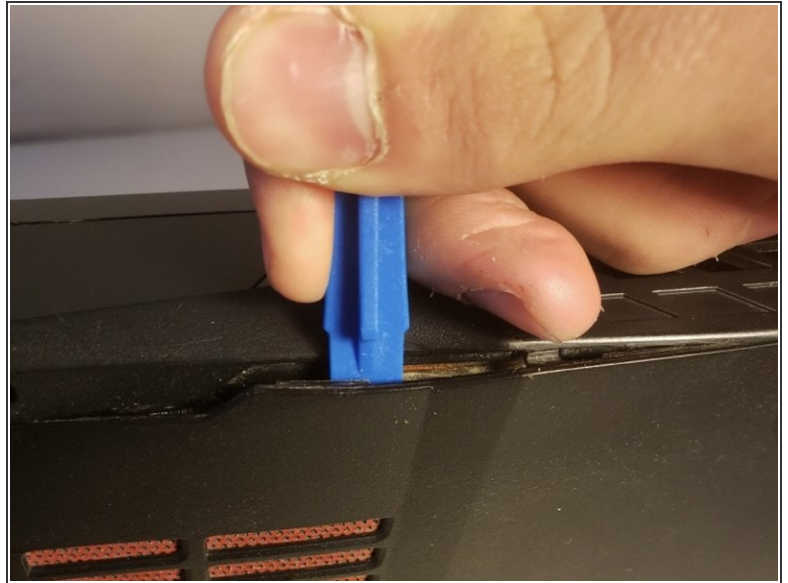
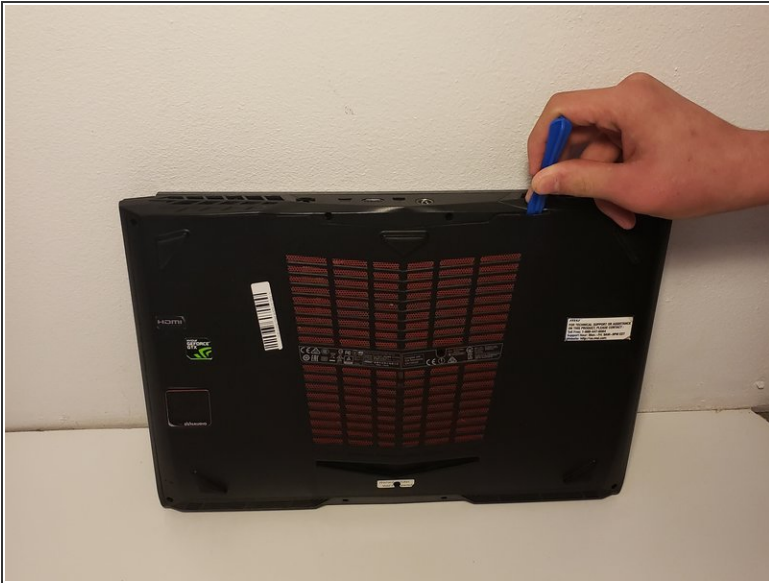
- [iFixit Opening Tool](#) (1)
 - [JIS #0 Screwdriver](#) (1)
-

Step 1 — Battery



-  Be sure to power off and unplug your device before you begin your repair.
-  Remove the 6 screws on the bottom plate of the laptop using a Phillips driver.

Step 2

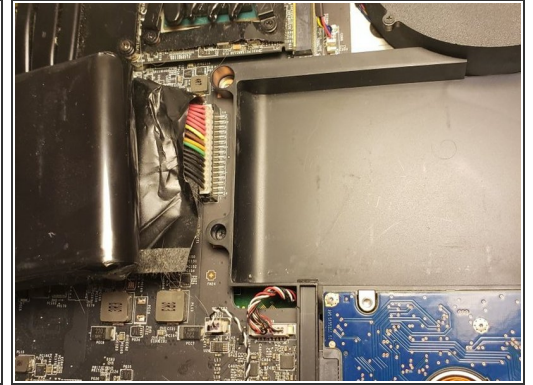
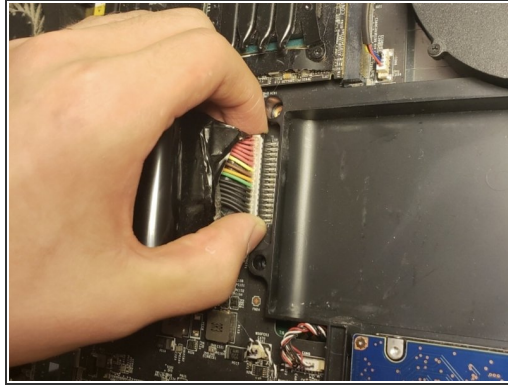


- Insert the plastic opening tool into the back plate of the laptop and lightly pry it up.

⚠ The laptop cover will break if it is being handled roughly.

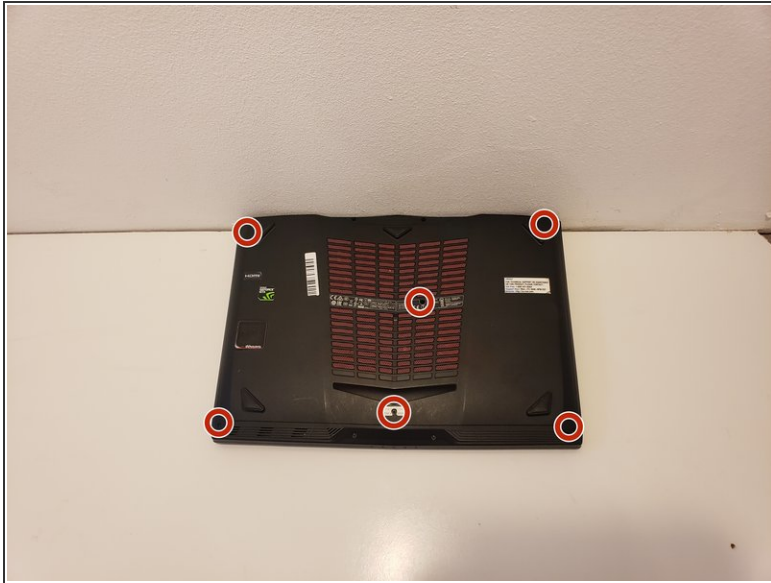
- Slide the plastic opening tool around the laptop's edge gently, slowly popping off the clips securing it into the laptop.
- Remove the back plate.

Step 3



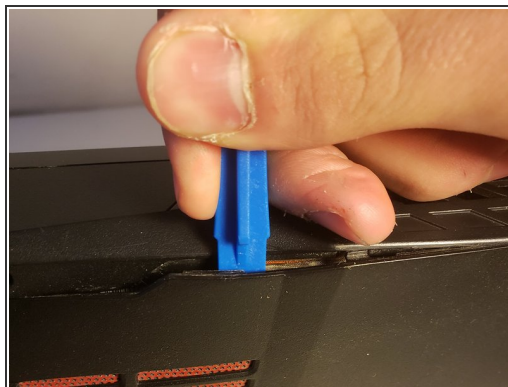
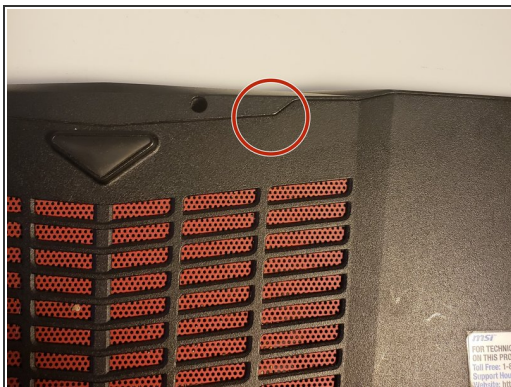
- Locate the battery.
- ⓘ The wires are located at the back end of the battery and covered in tape.
- Remove the tape covering the battery connector.
- Place your hands at the corners of the wires.
- Pull upward from the back end of the battery where the wires are located.
- Remove the battery.

Step 4 — Hard Drive



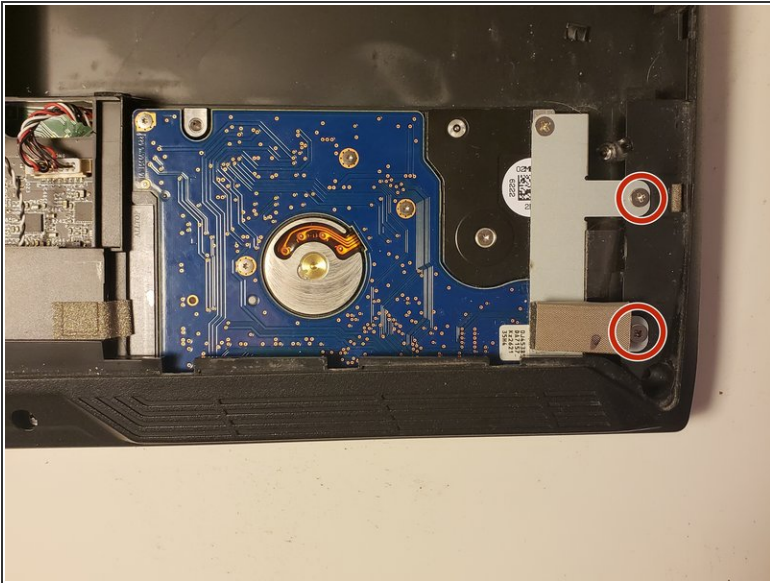
- Remove the six screws on the back plate of the laptop using a JIS #0 screwdriver.

Step 5



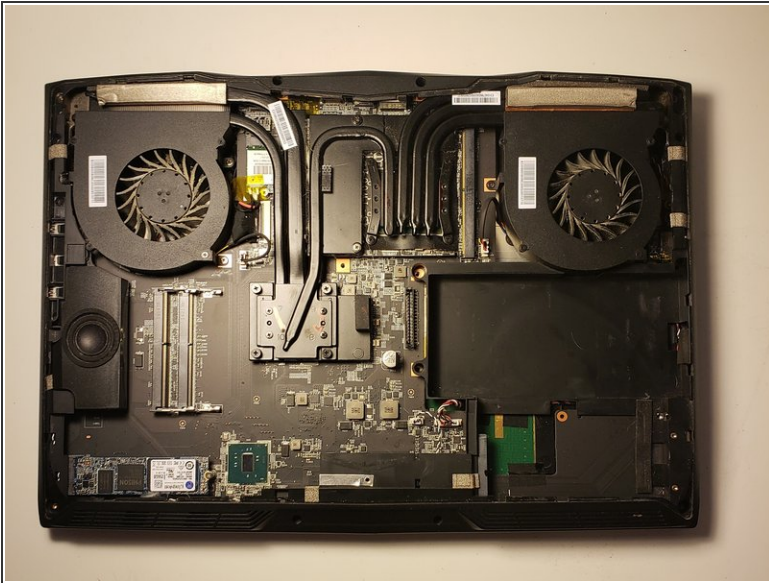
- Insert a plastic opening tool into the seam of the back cover
- Pry the cover up until clips release.
- Slide the plastic opening tool around the laptop until cover is fully removed.

Step 6



- Remove the two screws securing the hard drive to the laptop.
- Lightly lift the hard drive up by grasping the silver bracket that secures it to the laptop.
- Wiggle it backwards slowly until it is unplugged.
- Slide out from under the cover towards the battery.

Step 7 — Speaker

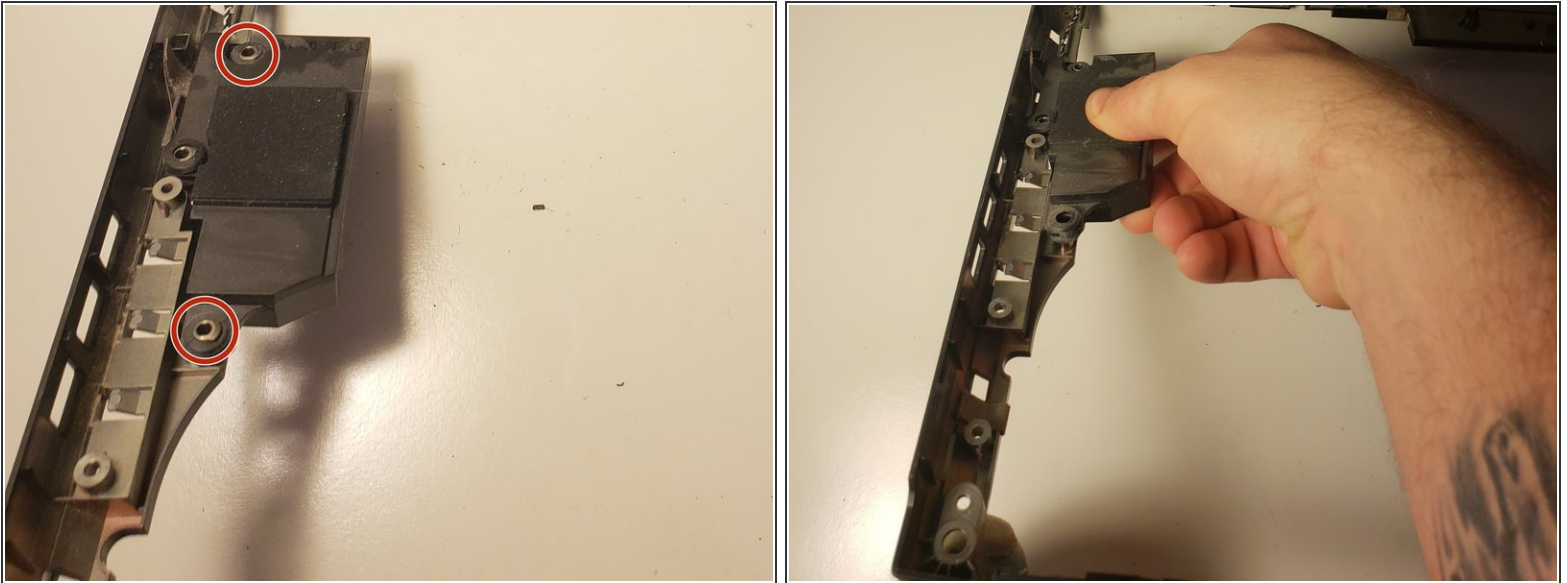


- Insert the plastic opening tool into the side of the laptop above the fan, and lightly pry it up.

⚠ The laptop will break if it is being handle roughly.

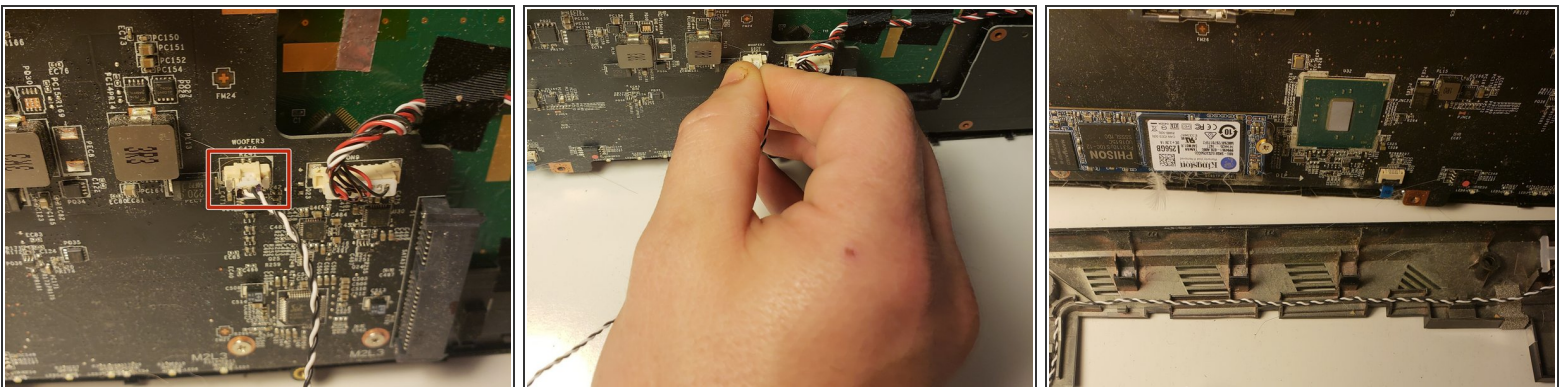
- Slide the plastic opening tool around the laptop's edge gently, while slowly popping off the clips securing it into the laptop.

Step 8



- Slowly pop off the clips securing the speaker to the laptop side frame.

Step 9



- Locate the speaker wires.
- ❗ The speaker wires are attached to the speaker. By running your hand across the speaker wires, you can find its location on the motherboard.
- Place your hands at the corners of the wires.
- Pull upward from the motherboard where the wires are located.

To reassemble your device, follow these instructions in reverse order.