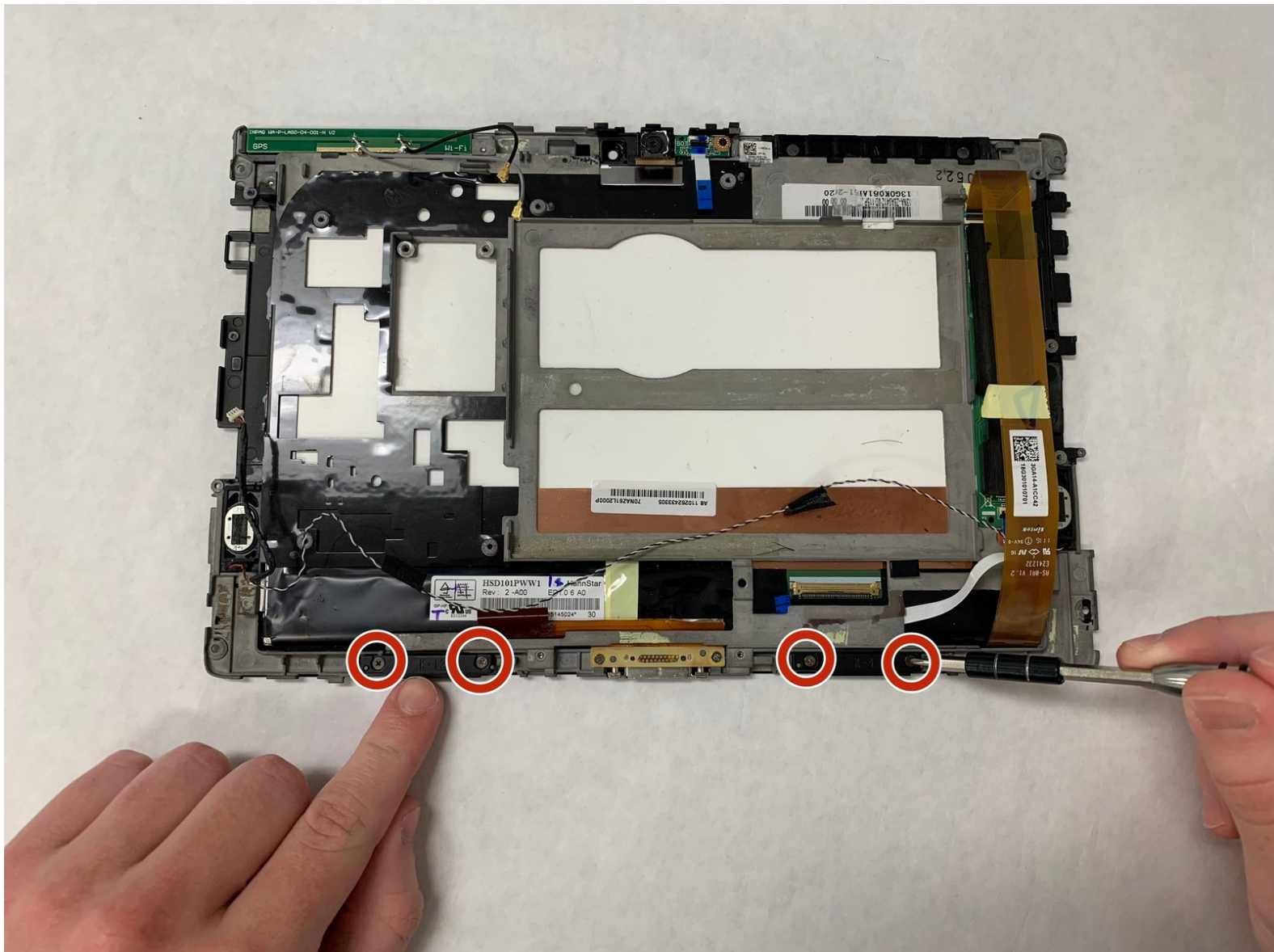




ASUS Eee Pad Transformer Screen Replacement

This guide will help replace the screen for the ASUS Eee Pad Transformer.

Written By: Brian Haskell



INTRODUCTION

One drop can mean the difference in having a usable tablet or not. That is why being able to replace a cracked or damaged screen is crucial to an electronics life span. Use this guide to replace the screen on your ASUS Eee Pad Transformer.



TOOLS:

- [T5 Torx Screwdriver](#) (1)
- [Phillips #00 Screwdriver](#) (1)
- [iFixit Opening Tools](#) (1)
- [Metal Spudger](#) (1)



PARTS:

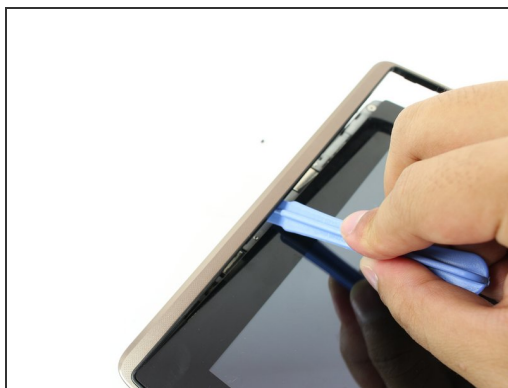
- [ASUS Eee Pad Transformer \(TF101\) Display Assembly](#) (1)

Step 1 — Back Panel



- Use T5 Torx Screwdriver to remove two 4.5 millimeter T5 screws on either side of the port on the bottom of the tablet.

Step 2



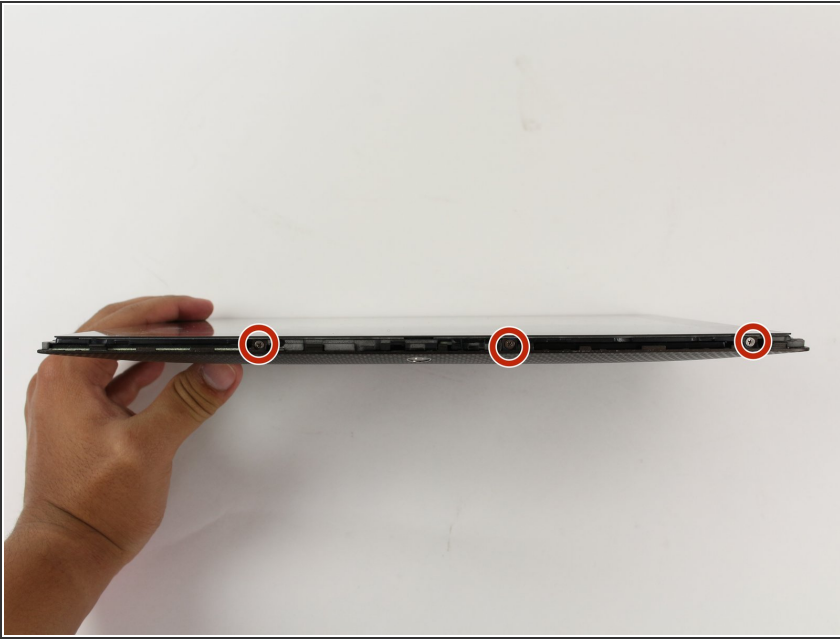
- Use the Plastic Opening Tool to pry between the main tablet body and the outer rim casing. Remove the outer rim casing by prying all the way around the device and pulling the rim upward.
- ⓘ The physical buttons are located on the outside of the rim on the right side, proceed with the guide to locate internal buttons.

Step 3



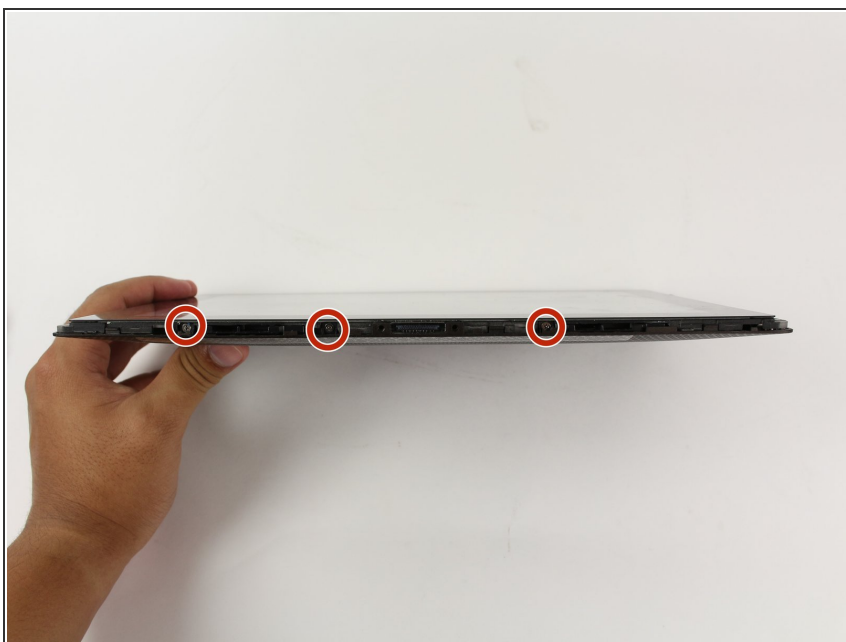
- Remove the four 2 millimeter Phillips #00 screws at the corners of the tablet.

Step 4



- Use a Phillips #00 Screwdriver to remove the three 3 millimeter screws securing the front panel to the back panel found above the camera area, on the top portion of the tablet.

Step 5



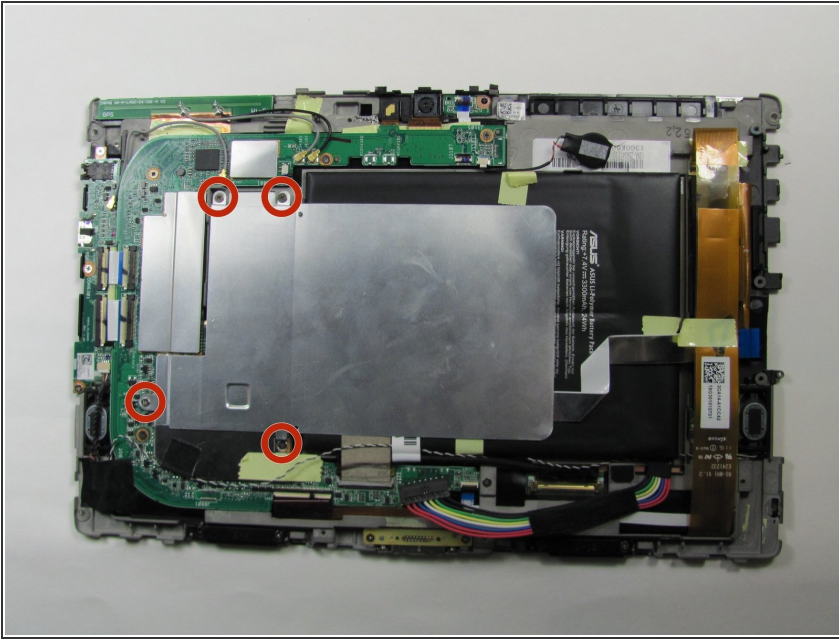
- Use a Phillips #00 Screwdriver to remove the three 3 millimeter screws securing the front panel to the back panel found on the bottom portion of the tablet near the port.

Step 6



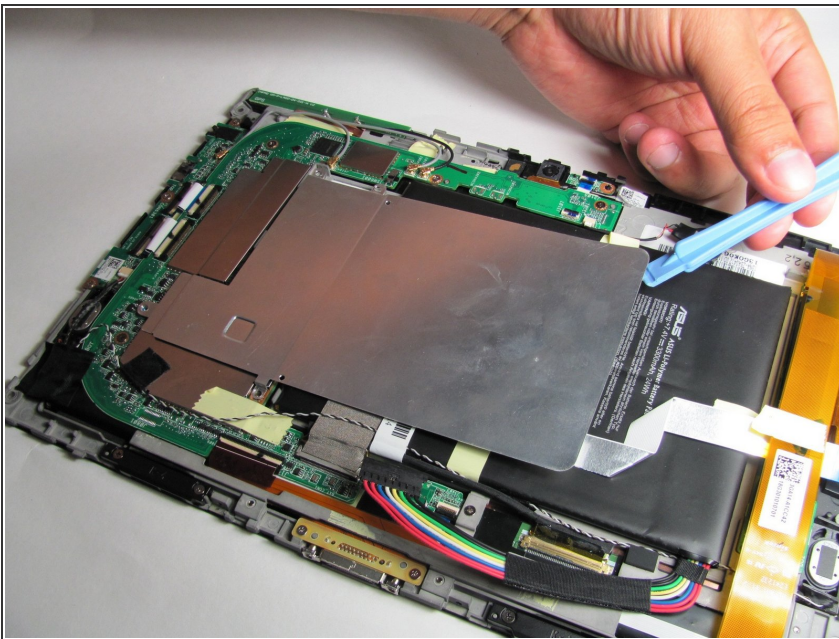
- Remove back panel by pulling away from the remaining device.

Step 7 — Remove screws



- Use Phillips #00 Screwdriver to remove four 3 millimeter screws found on the metal panel.

Step 8 — Remove metal panel



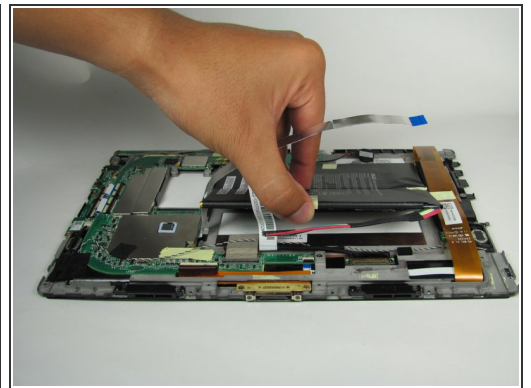
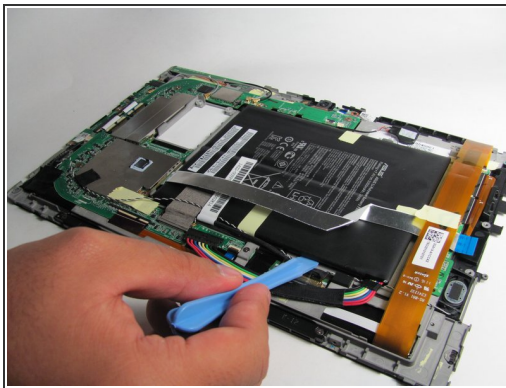
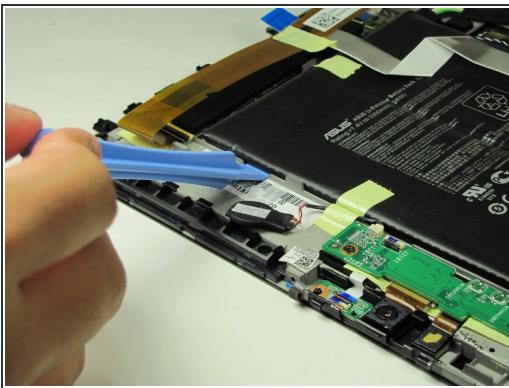
- ⓘ Metal panel is glued to the battery. Remove with care.
- Use Plastic Opening Tool to pry off the metal panel from the battery starting on the right side corners and working around the rest of the panel.

Step 9 — Detach wires



⚠ Do NOT pry the battery connector upward as shown in this photo. Instead, pull the connector straight out (in the direction of the wires).

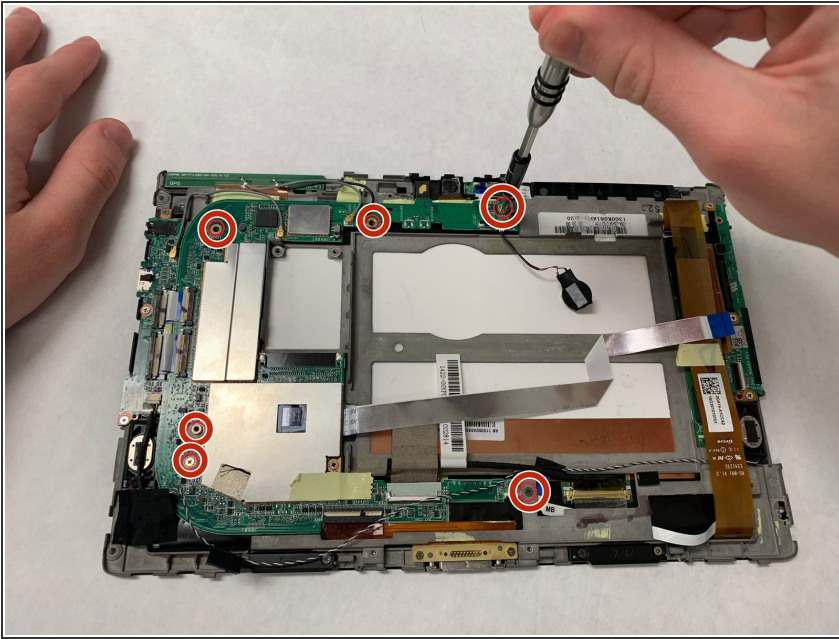
Step 10 — Remove battery



i Battery is glued to device. Remove with care.

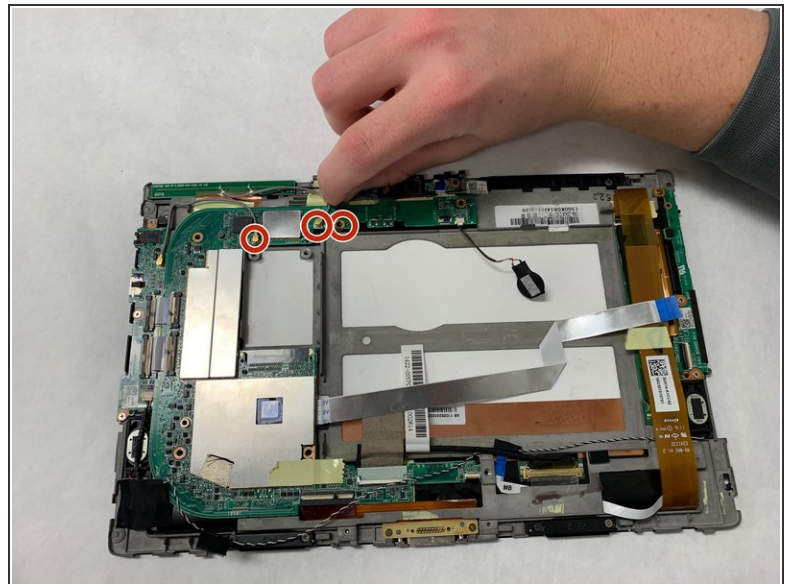
- Peel off tape from around the edges of the battery.
- Insert Plastic Opening Tool into slot on side of battery found near the wire bundle.
- Lift up the battery off of the device.

Step 11 — Motherboard



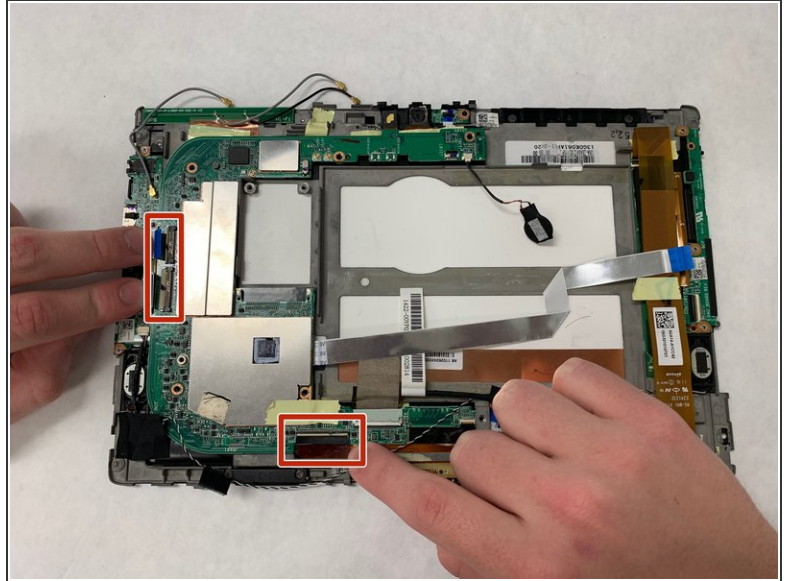
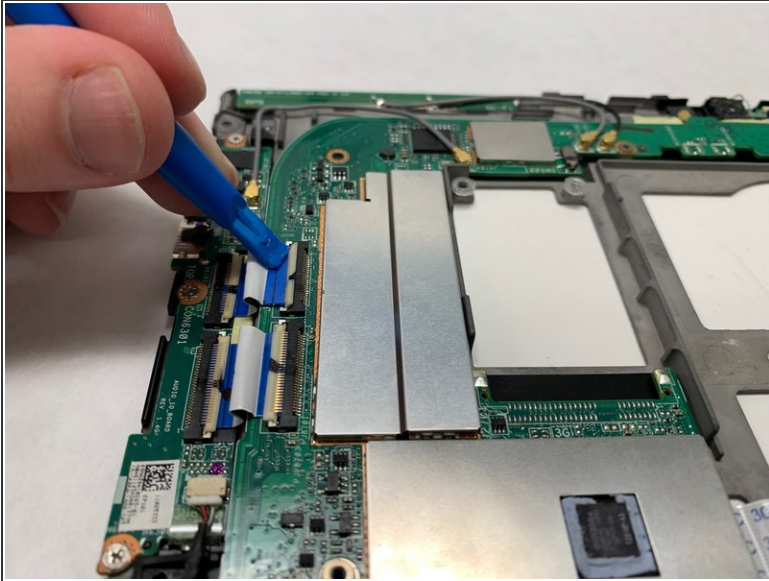
- Use a Phillips #00 Screwdriver to remove the six 3 millimeter screws securing the motherboard to the screen.

Step 12



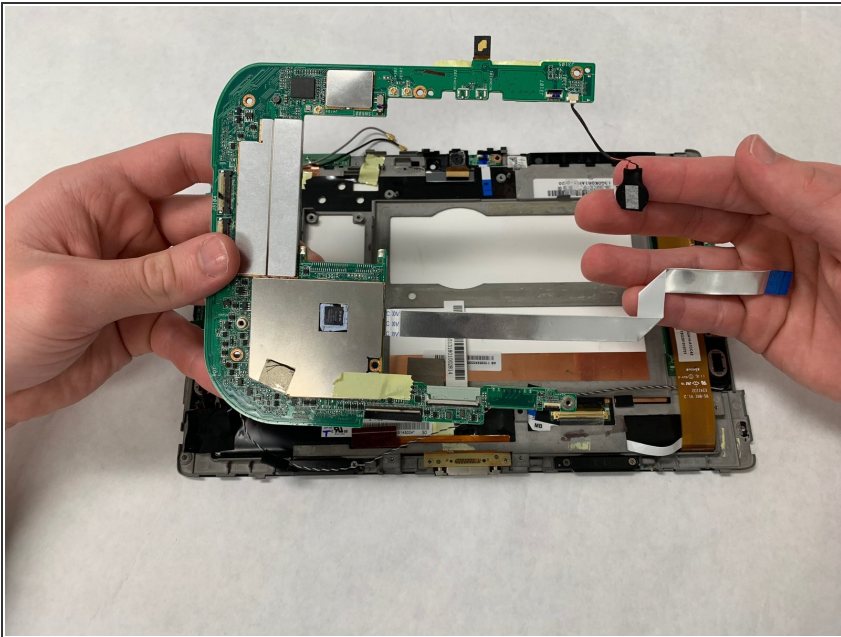
- Detach the Wifi and GPS antennas (three coaxial cables connected to the motherboard) using hands, metal spudger, or tweezers by lifting away from the device.

Step 13



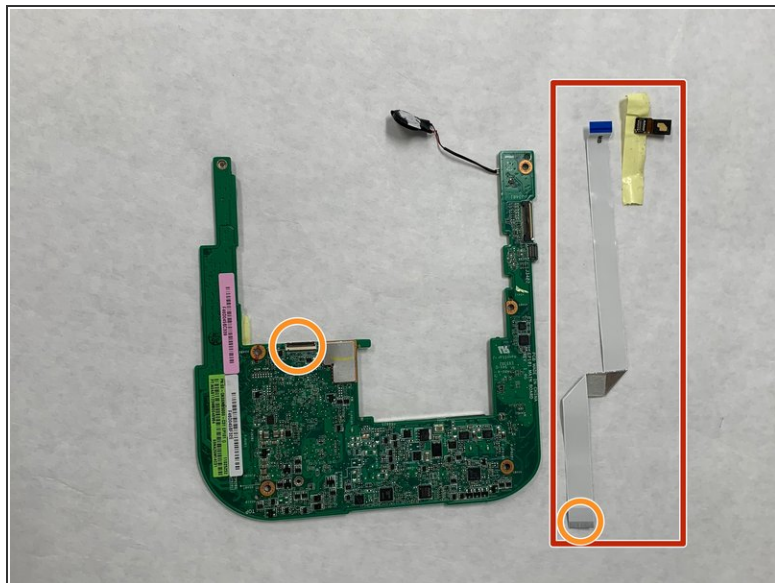
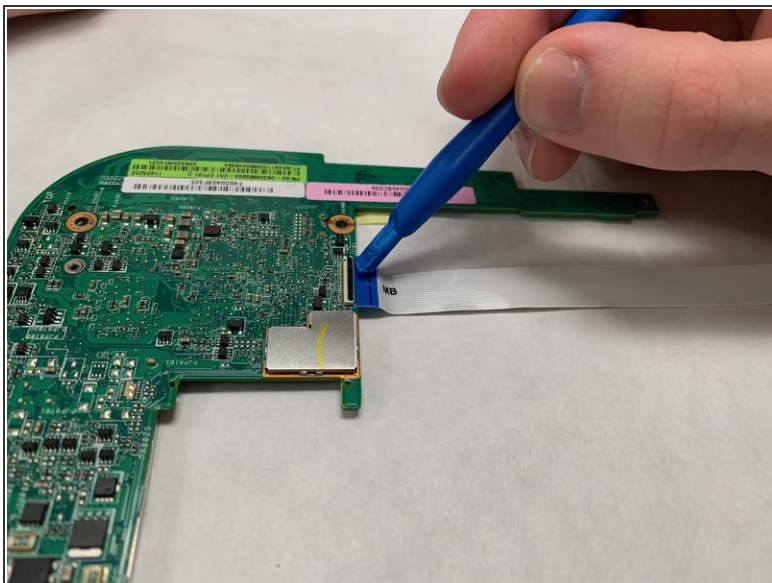
- Use fingers, plastic opening tool, or metal spudger to lift the clips to the ZIF connector. Remove the ribbon cables attached underneath.

Step 14



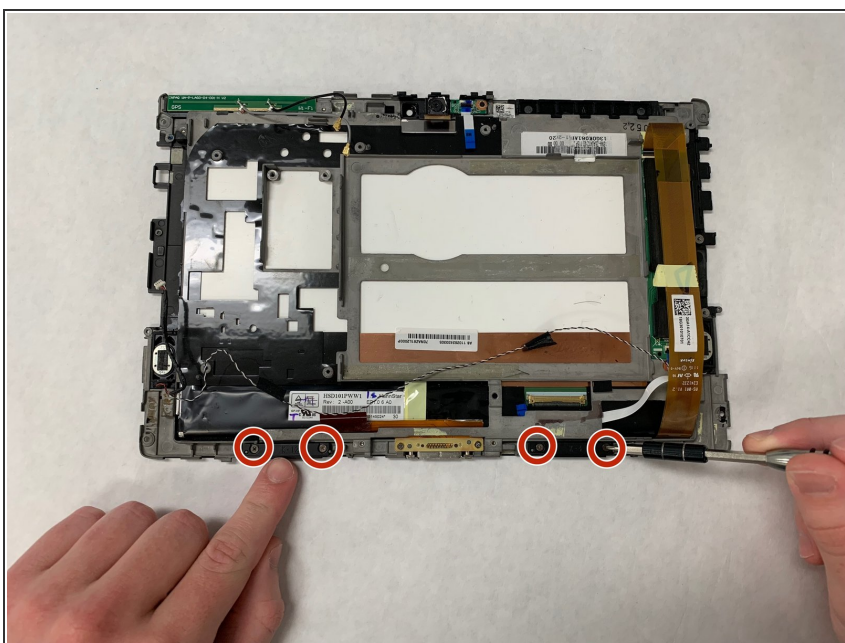
- Remove any tape that is holding down any free wires.
- Carefully lift the motherboard and slide it out from underneath its constraints.

Step 15



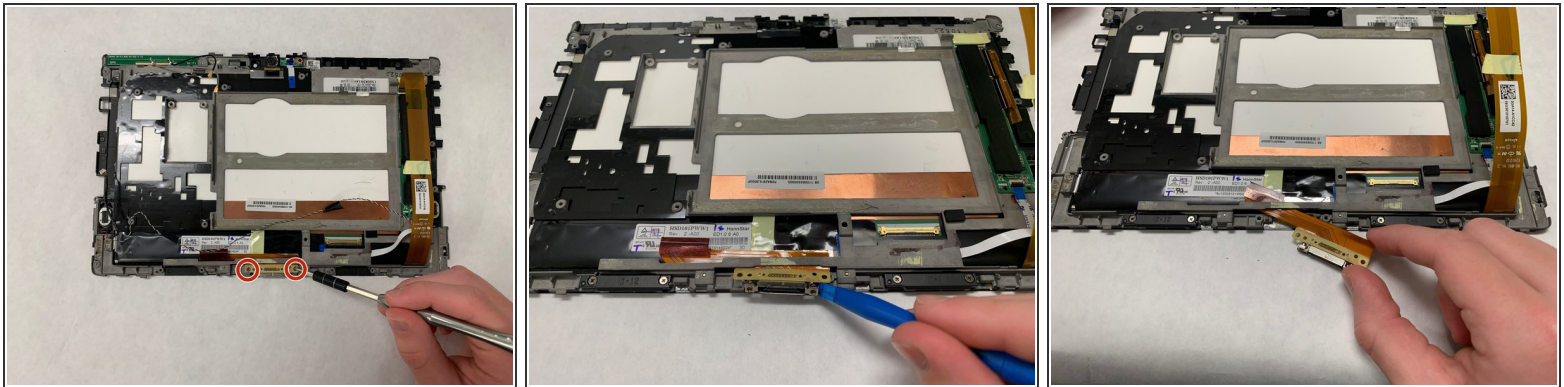
- Unclip the ribbon cable from the ZIF connector using a plastic opening tool or metal spudger.
- Remove any taped on accessories

Step 16 — Screen



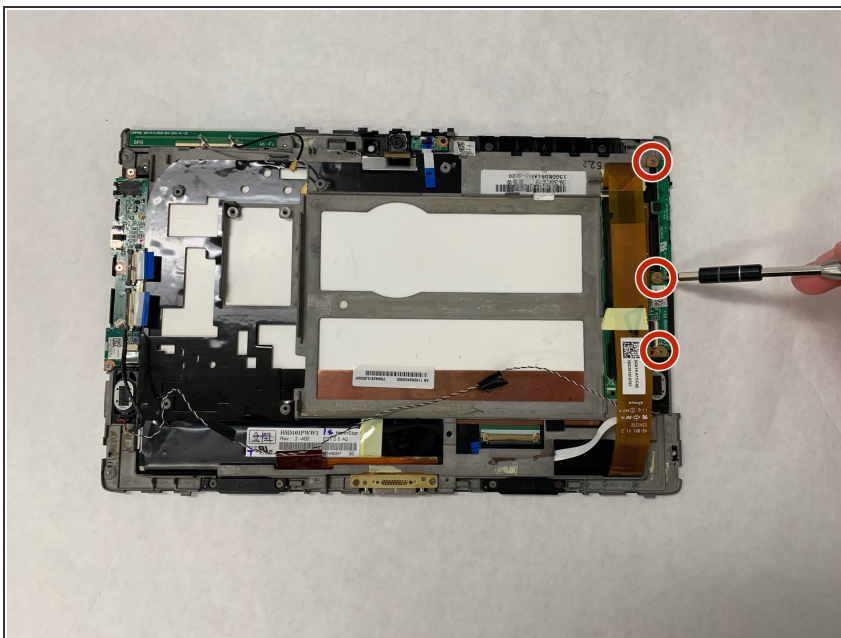
- Use a Phillips #00 Screwdriver to remove the four 3 millimeter screws securing the two black ports at the bottom.

Step 17



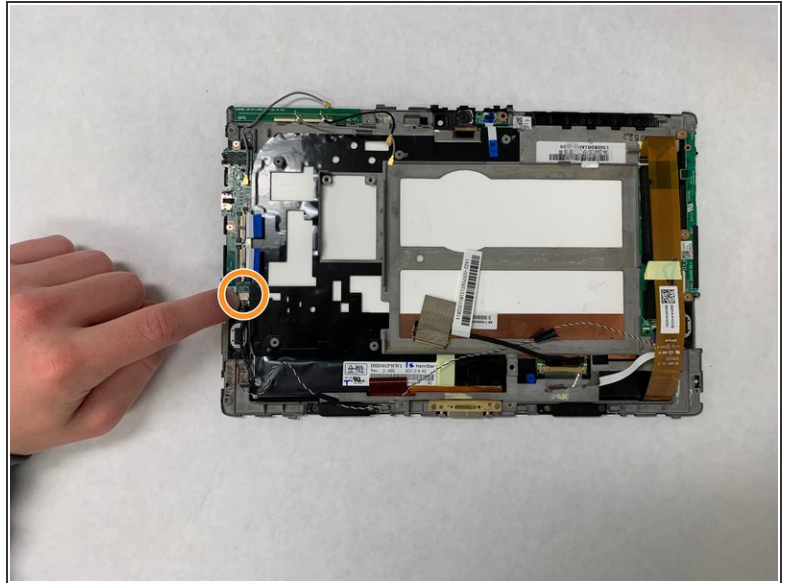
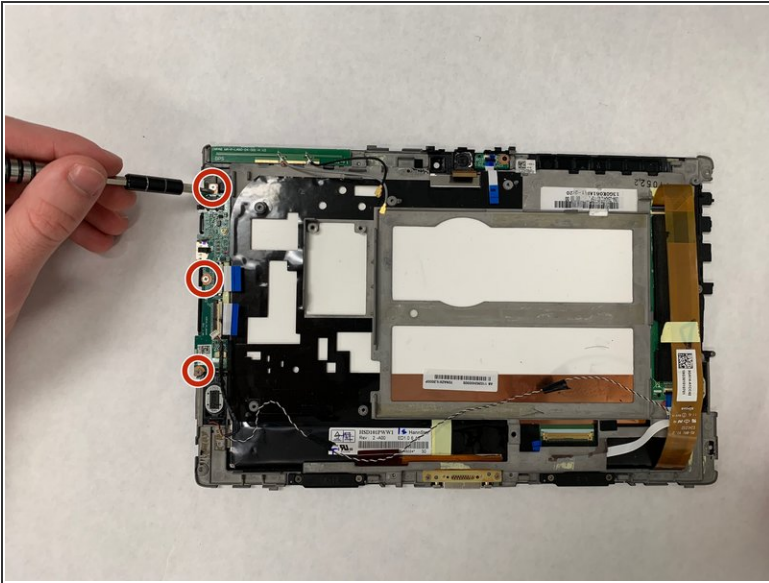
- Use a Phillips #00 Screwdriver to remove the two 3 millimeter screws securing the charging port to the screen.
- Carefully remove the charging port by lifting the metal end and carefully sliding the plastic attached underneath the grey screen constraint.

Step 18



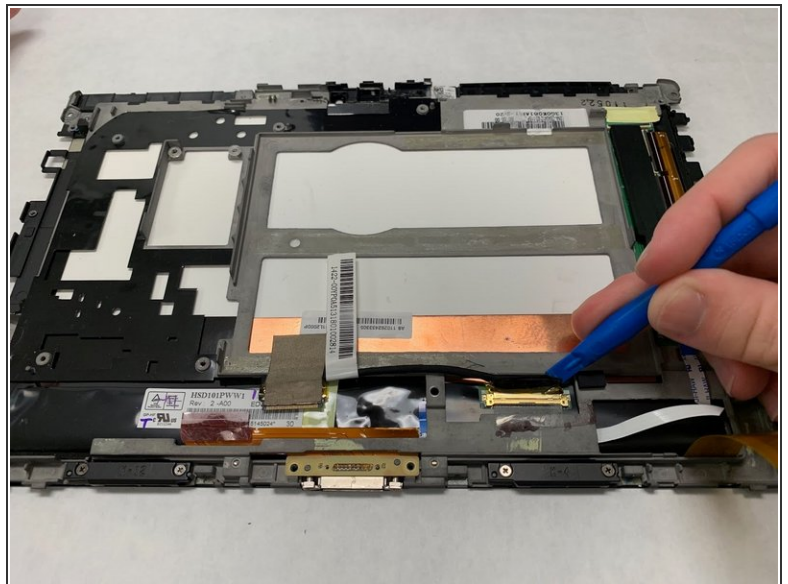
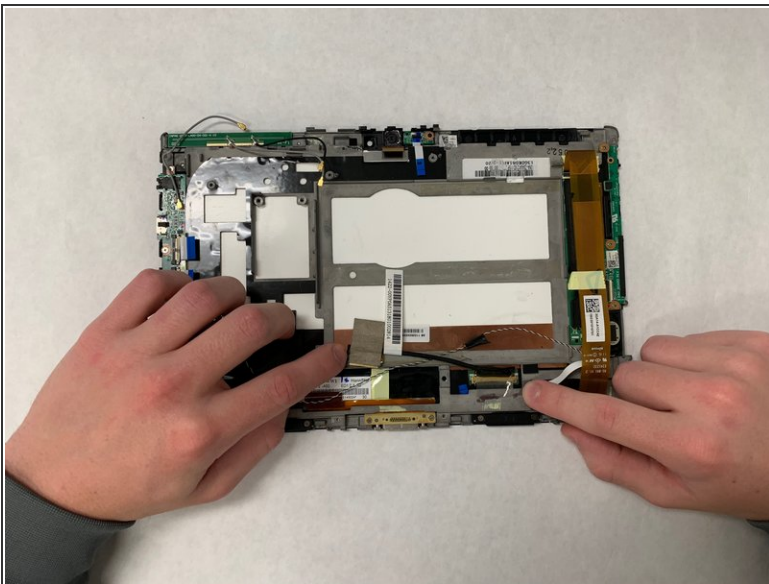
- Use a Phillips #00 Screwdriver to remove the three 3 millimeter screws securing volume button board.

Step 19



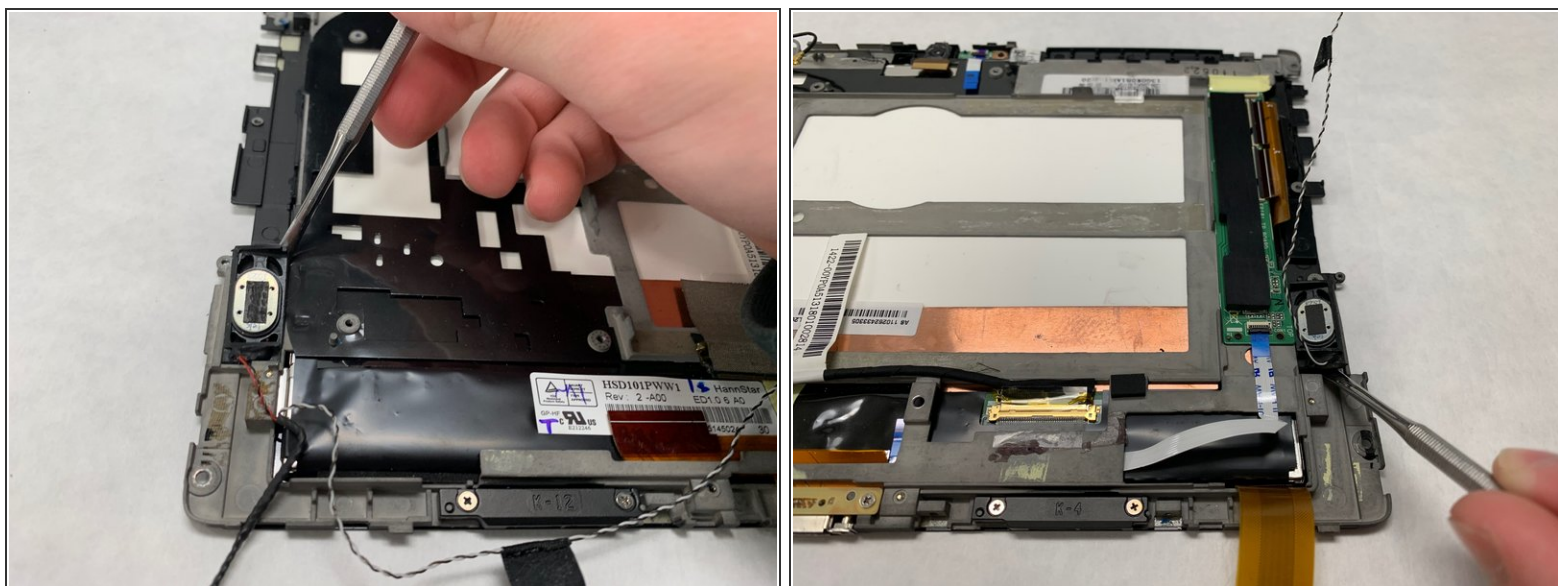
- Use a Phillips #00 Screwdriver to remove the three 3 millimeter screws securing the headphone jack board.
- Unclip the No-fuss ribbon cable connector using your fingernail or metal spudger.

Step 20



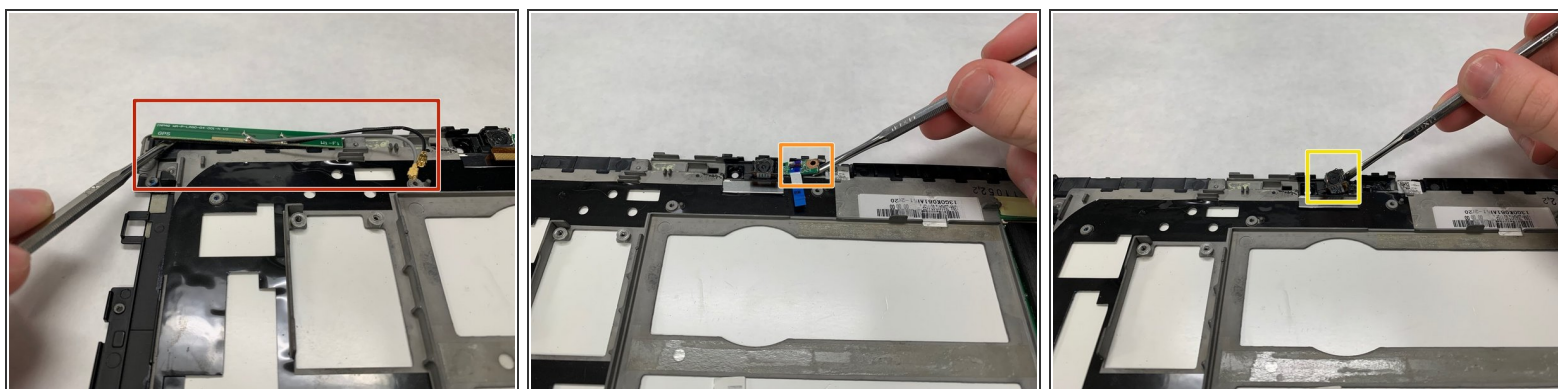
- Use fingers, plastic opening tool, or metal spudger to lift the clip securing the display cable and remove by sliding it out.

Step 21



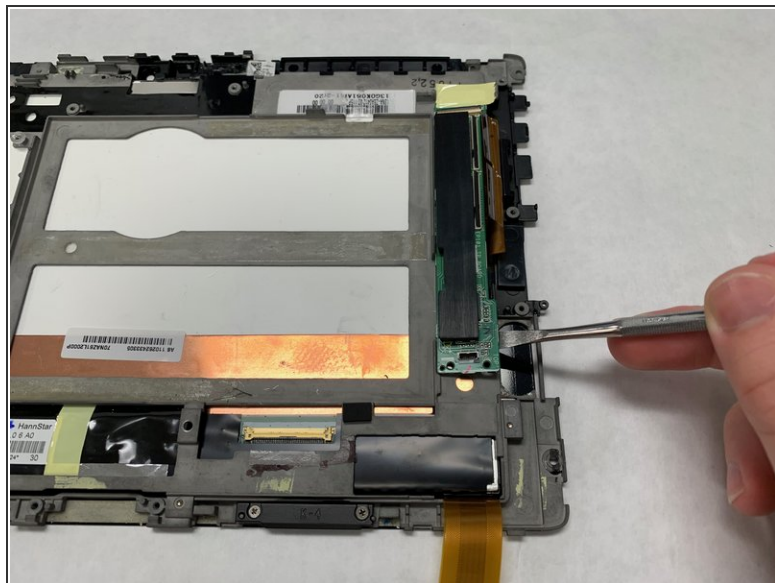
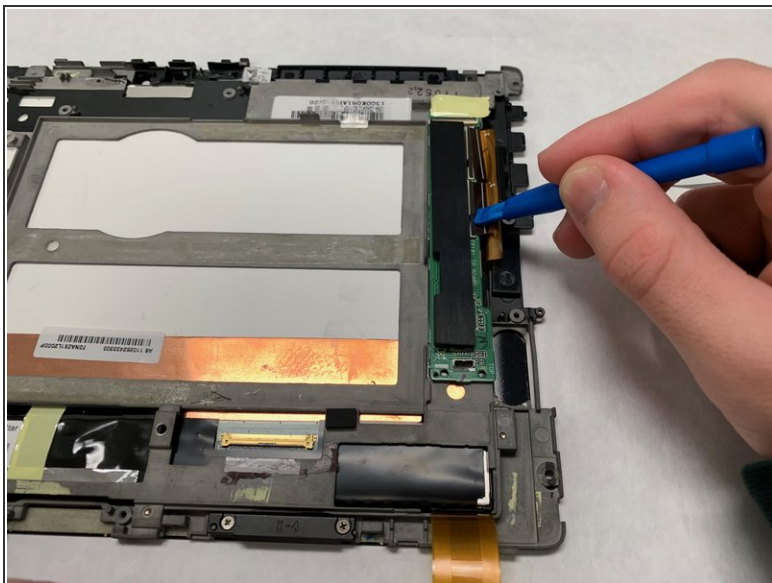
- Use fingers, plastic opening tool, or metal spudger to lift the glued-in left and right speaker.

Step 22



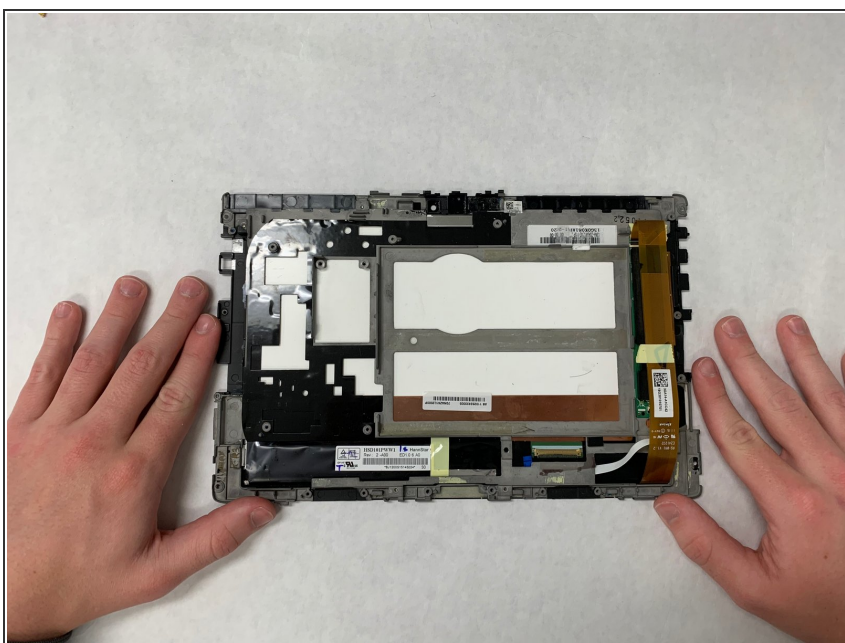
- Detach the Wifi and GPS antenna from the screen. This piece is glued down so use a metal spudger to get under the piece and lift up.
- Use a metal spudger to lift up the small electric board next to the camera. This piece is glued down as well as secured by plastic pillars.
- Using a metal spudger, lift the camera out of its spot. The camera is glued down.

Step 23



- Detach the two ZIF connectors using your fingers, plastic opening tool, or metal spudger.
- Using a metal spudger lift up the glued down motherboard.

Step 24



- This is what the final screen should look like after everything is removed.

To reassemble your device, follow these instructions in reverse order.