



Dell Inspiron 11 i3147 Camera Replacement

If you wish to replace your Dell Inspiron 11...

Written By: Muhammad Erchid



INTRODUCTION

If you wish to replace your Dell Inspiron 11 i3147 Camera for any reason, use this guide for step-by-step instructions.

Before beginning, make sure the malfunction is not caused by a system-level setting for your built-in webcam that has turned off the camera, and that there is no obstruction causing distortion or clarity issues on the camera lens.

Safety first! Remember to unplug and turn off your device before opening the back cover.

For steps 7, 10, and 13 inspect the connection between the device and the plugged-in component to check if a loose connection may be the cause of the camera malfunction.

TOOLS:

Phillips #0 Screwdriver (1)

Spudger (1)

Tweezers (1)

Step 1 — Camera



- Close the computer and turn it over, with the bottom of the computer facing up.

Step 2



- Remove the nine 7.6mm PH0 screws on the cover.

Step 3



- Use a plastic opening tool to remove the cover from the computer.

Step 4



- Remove the three 4.7mm PH0 screws that secure the battery to the computer.

Step 5



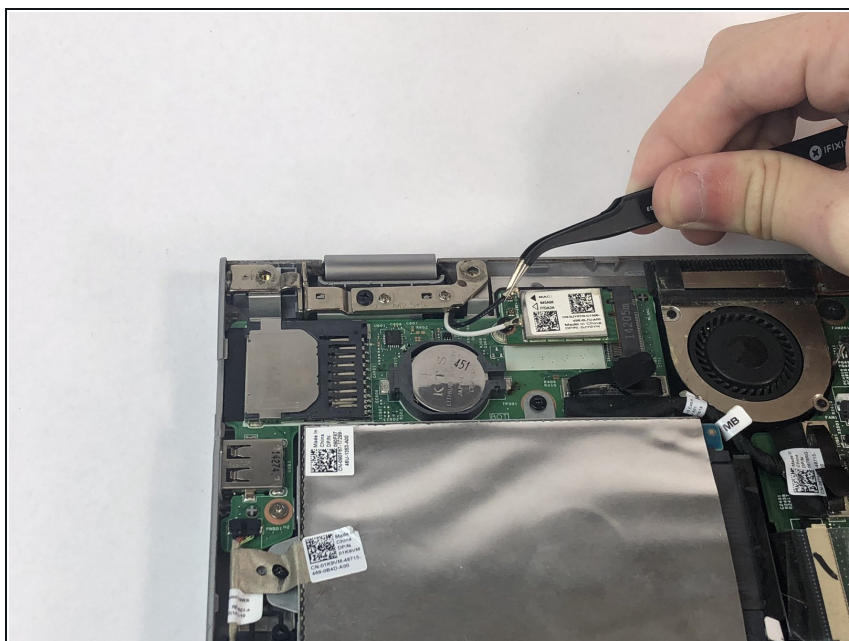
- Remove the hard drive cable from the battery.

Step 6



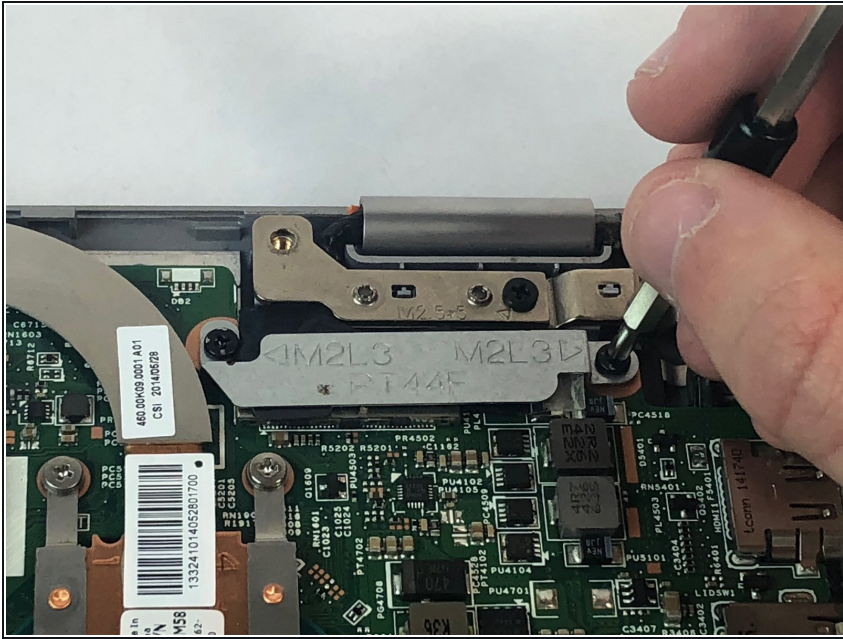
- Lift the battery from the keyboard.

Step 7



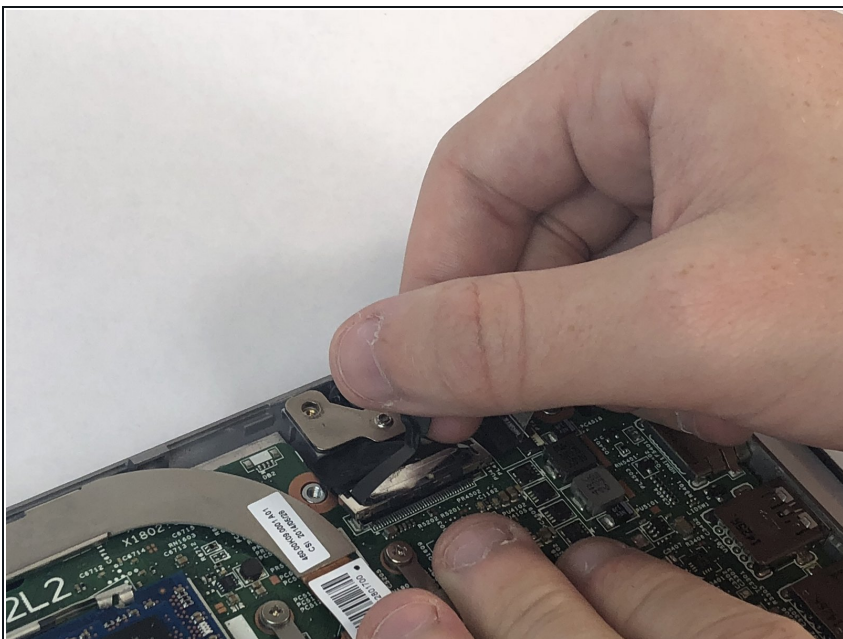
- Disconnect antenna cables.

Step 8



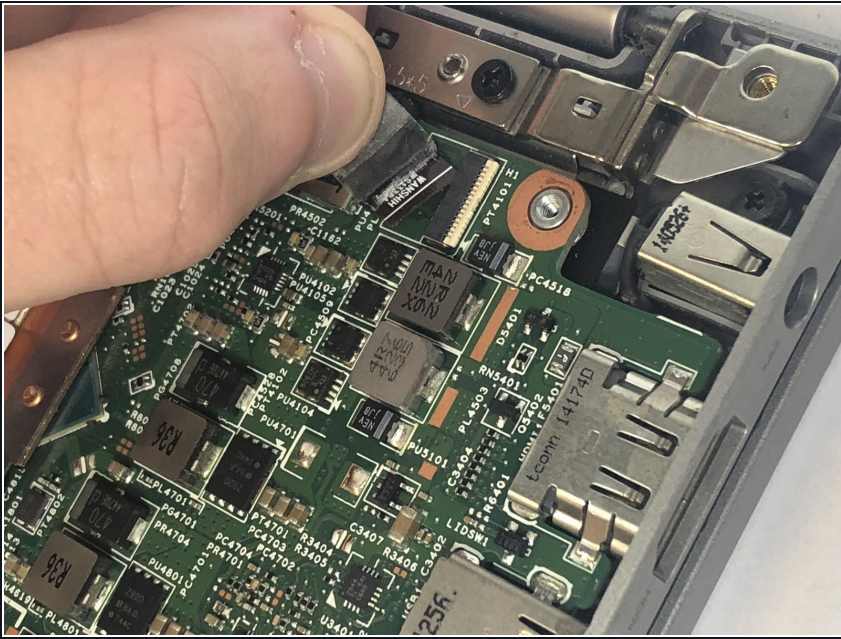
- Remove 2 4mm PH0 screws that connect display cable bracket to the system board.
- Lift display cable bracket off the system board.

Step 9



- Use the pull tab to disconnect the display cable from the system board.

Step 10



- Pull the windows button board cable from the system board.

Step 11



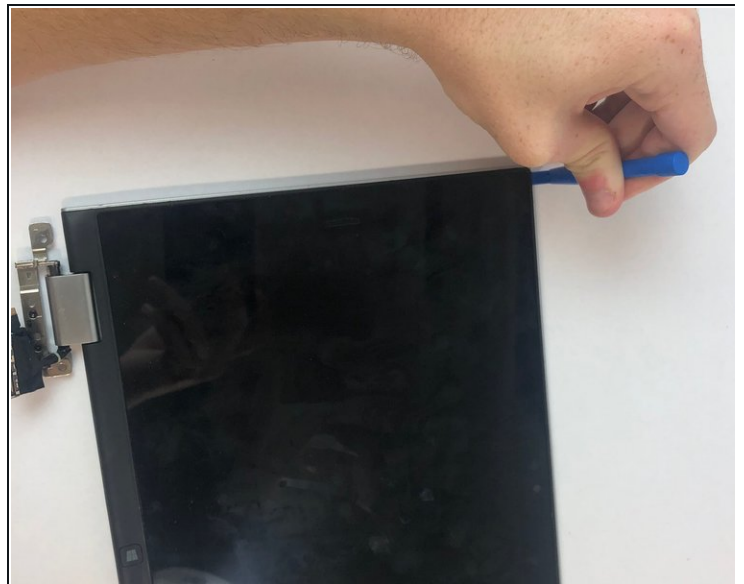
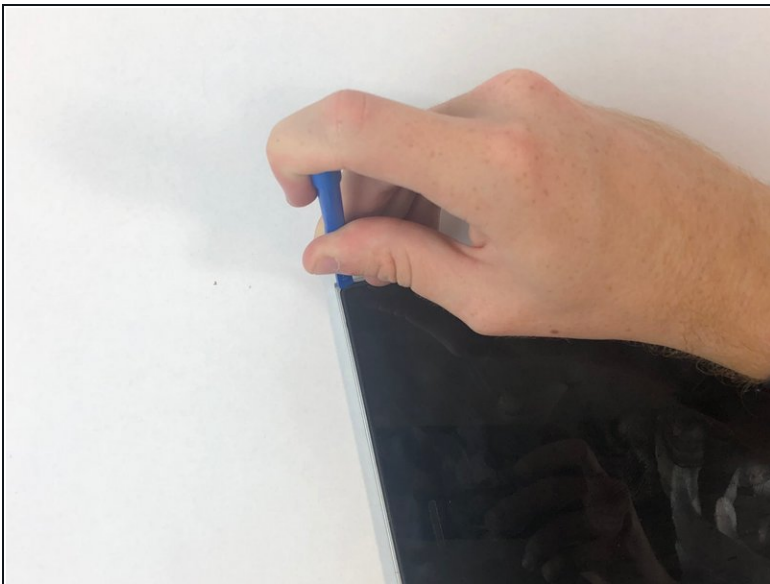
- Remove the 2 5.6mm PH0 screws.

Step 12



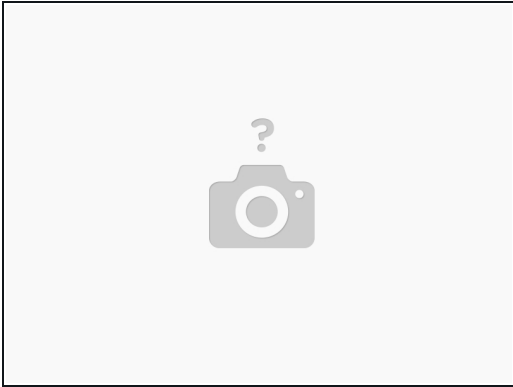
- Separate the screen and body of the computer.

Step 13



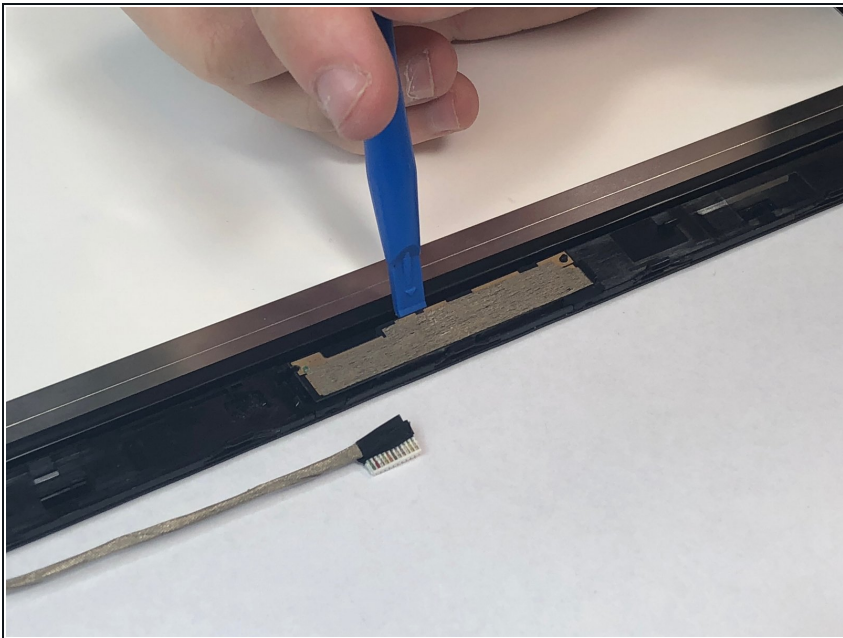
- Use a plastic opening tool to take the display panel assembly off the display back cover and antenna assembly. Start from the top.

Step 14



- Place display panel face down on a flat surface

Step 15



- Use a plastic opening tool to take the camera module off the display.

To reassemble your device, follow these instructions in reverse order.