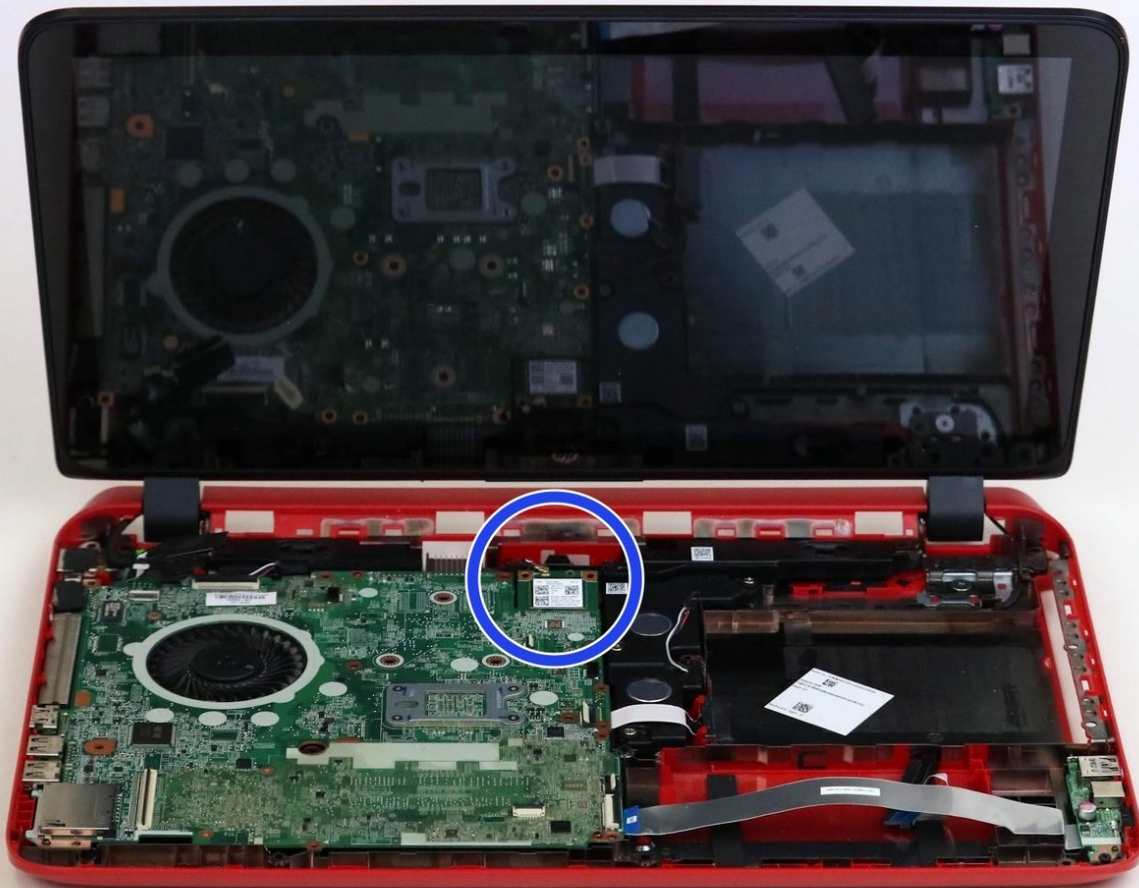




HP Beats Special Edition 15-p390nr WiFi Card Replacement

Use this guide to replace the WIFI card on your HP Beats Special Edition 15-p390nr.

Written By: Evan Rice



INTRODUCTION

Use this guide to replace the WIFI card on your HP Beats Special Edition 15-p390nr. Make sure you have removed the keyboard panel by referring to the prerequisite guide.

TOOLS:

- [Phillips #0 Screwdriver](#) (1)
 - [Phillips #00 Screwdriver](#) (1)
 - [Metal Spudger](#) (1)
-

Step 1 — Keyboard



Turn computer off before starting.

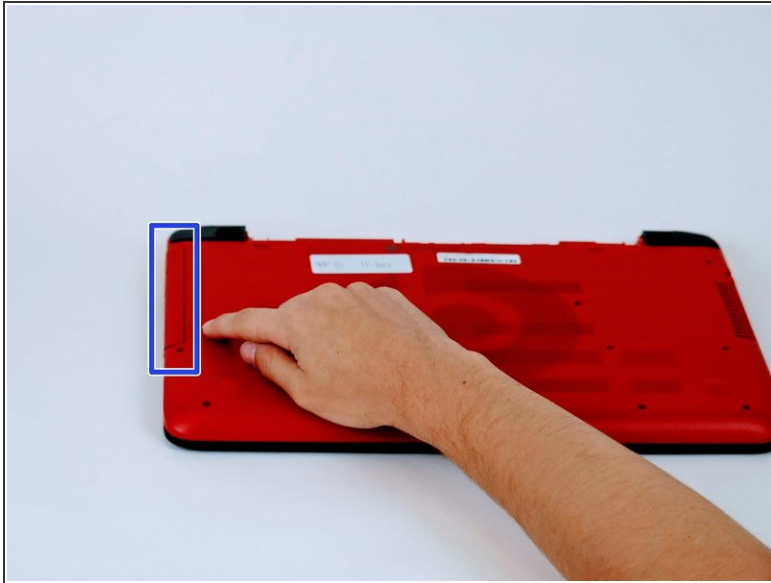
- Turn computer over and begin removing noticeable 8mm screws with a Phillips #0 screwdriver.

Step 2



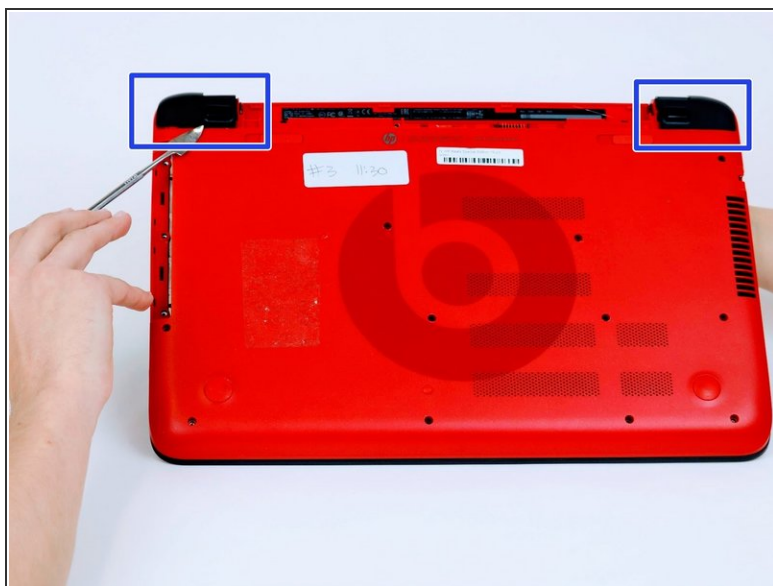
- i Some screws may be hidden under a screw cover.
 - Simply use a metal spudger to pop off the screw cover to unveil the hidden 8mm screw.
- i Screw cover may fly when removing.

Step 3



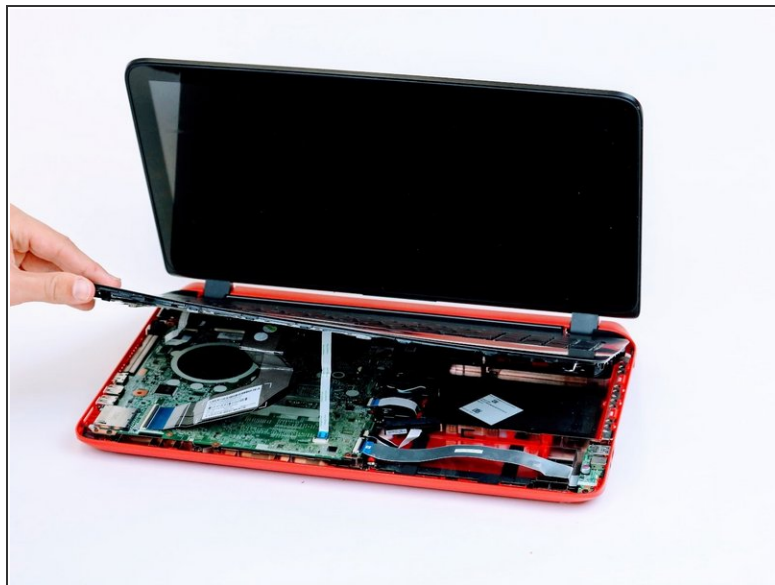
- Once screws are removed you may now remove the optical drive.
- Remove the hidden 3mm screw in the optical drive port.

Step 4



- Remove the rubberized feet located on the left and right shoulder of the computer to uncover hidden 8mm screws.
- ⓘ Popping noises are normal.
- The shoulder caps are removable. Underneath there are 2 additional screws.

Step 5



- Flip computer over and wedge metal spudger along the computer to pop off keyboard panel

Step 6



- Unclip wires connected to the motherboard and remove keyboard from the device.

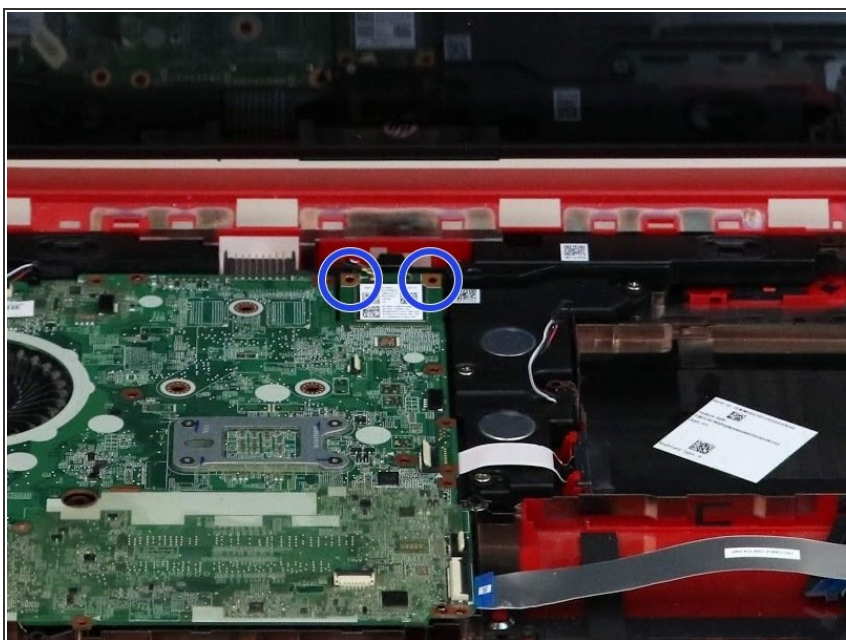
i 17 screws should be removed up to this point.

Step 7 — WiFi Card



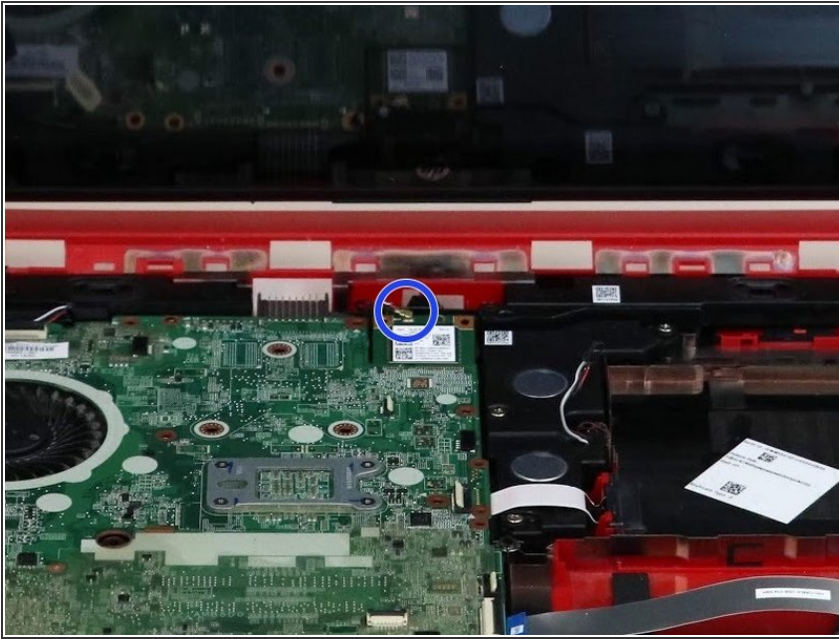
- Once the keyboard panel is removed you will need to locate the WiFi card

Step 8



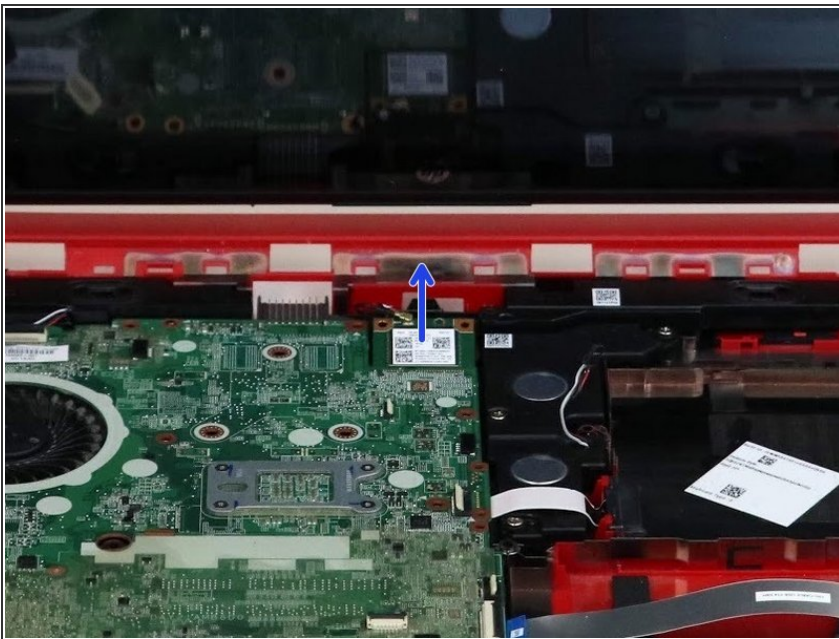
- Remove two screws using the Phillips #0 screwdriver.

Step 9



- Remove wire connected to the back of the card by pulling it straight up.

Step 10



- Pull card away from you to remove it from the motherboard.

⚠ Refrain from wiggling or moving the card around, while connected to the motherboard, to prevent damage to connector pins.

To reassemble your device, follow these instructions in reverse order.