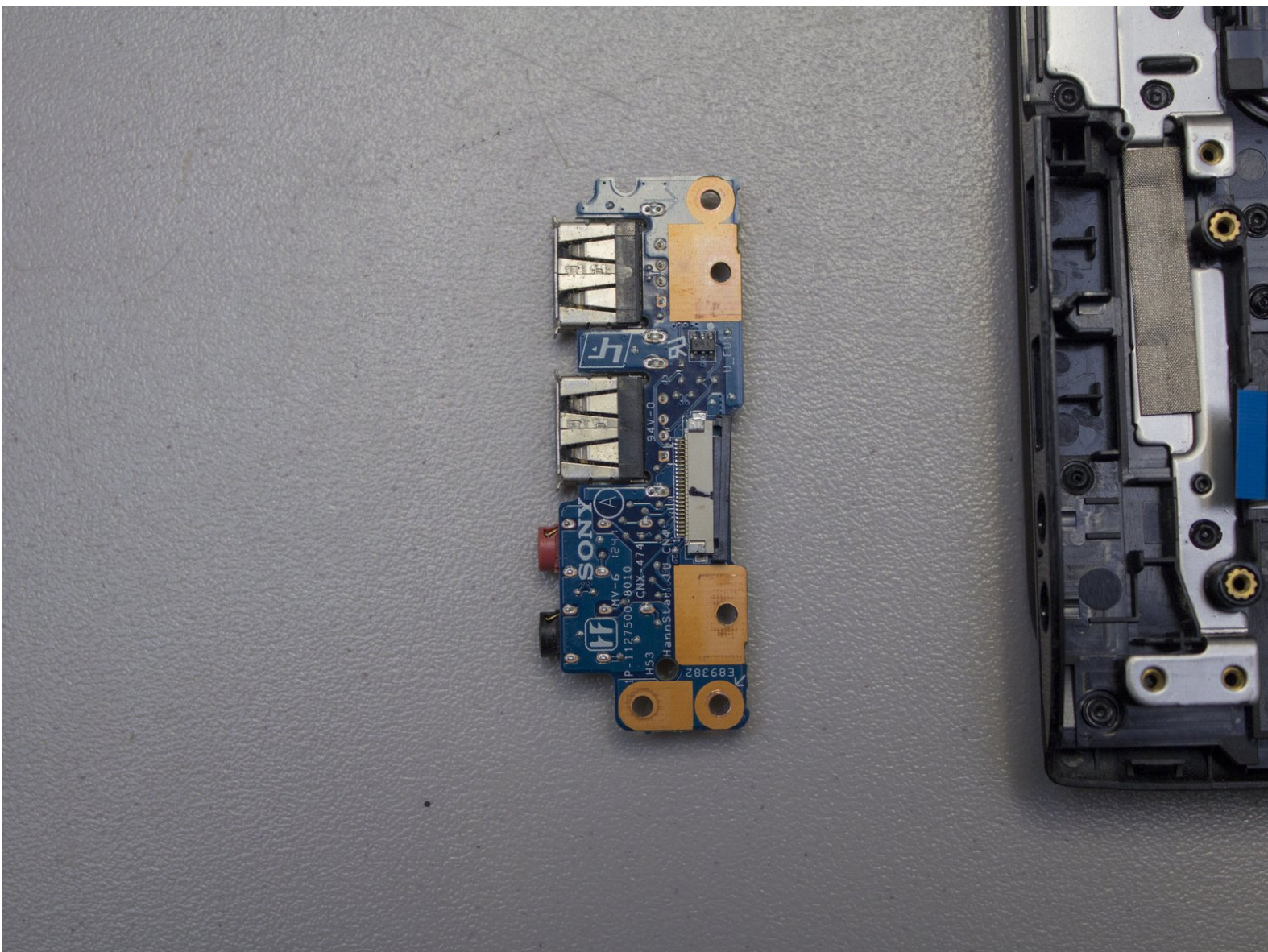




# Sony VAIO SVE14AJ16L I/O Card Replacement

This guide will help you replace the I/O card that contains two USB ports and the audio in and out ports in a Sony VAIO SVE14AJ16L laptop.

Written By: Carlos Landa



---

## INTRODUCTION

If you notice that what you input into a computer is not outputting correctly, it may be that your I/O card needs replacing. This guide will walk you through how to replace the Sony VAIO SVE14AJ16L I/O Card on your laptop.



### TOOLS:

- [iFixit Opening Tool](#) (1)
  - [Magnetic Project Mat](#) (1)
  - [Phillips #0 Screwdriver](#) (1)
-

## Step 1 — I/O Card



- Flip the laptop so the bottom is facing you.

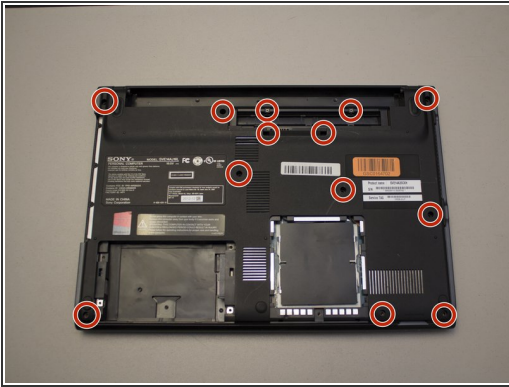
## Step 2



- Remove the battery, hard drive cover, and RAM cover.
  - Unscrew the two Phillips screws to remove the hard drive from the computer
- ⓘ If you're unsure how to remove the covers for the hard drive, battery, and RAM, refer to the guides on replacing these components.

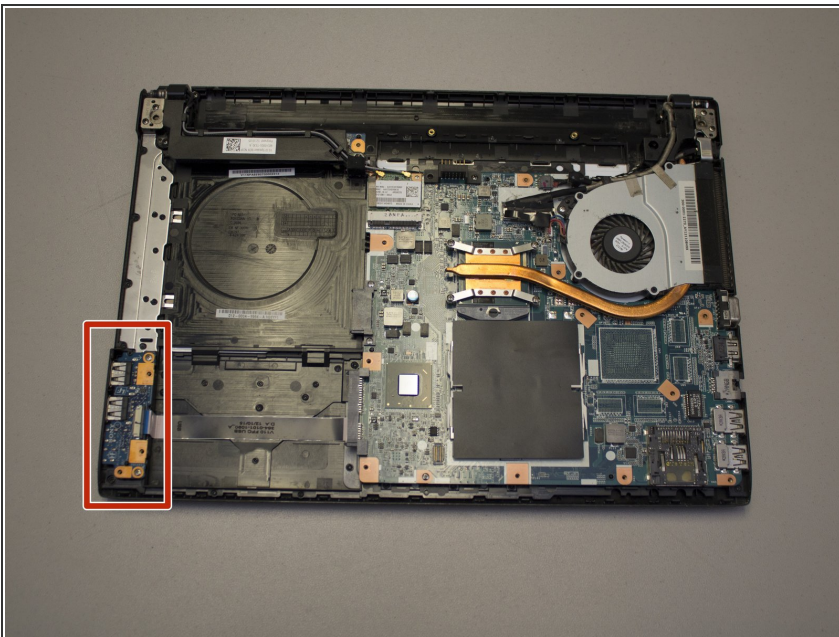


### Step 3



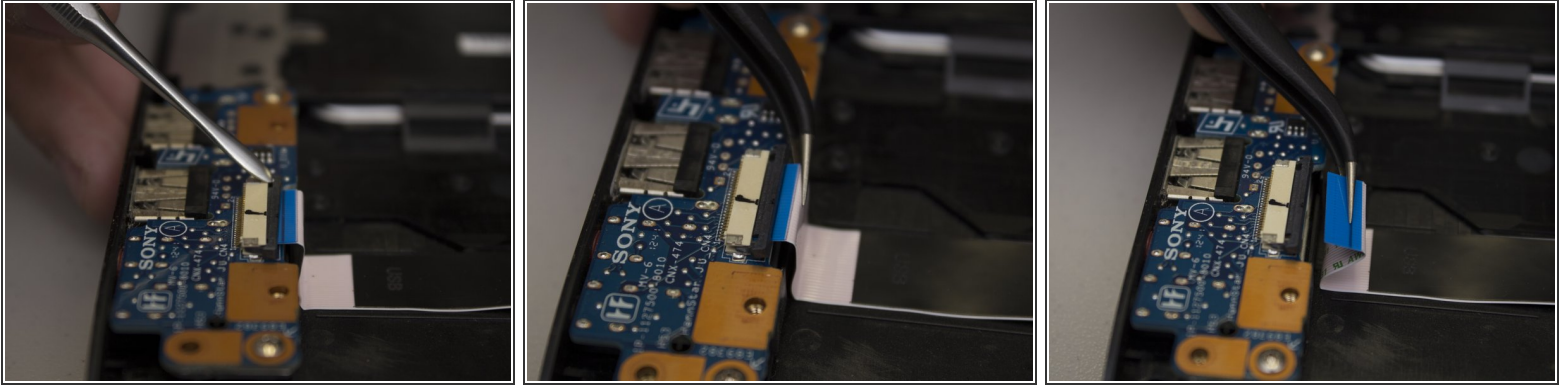
- Remove the 13 Phillips #0 screws.
- ⓘ Make sure you have an organization system to remember which screws go where, as the majority are different sizes! The [iFixit Magnetic Project Mat](#) is an awesome tool for this exact reason!
- Carefully pry apart the clipped-on bottom panel of the laptop to expose the internals using the iFixit opening tool.

### Step 4



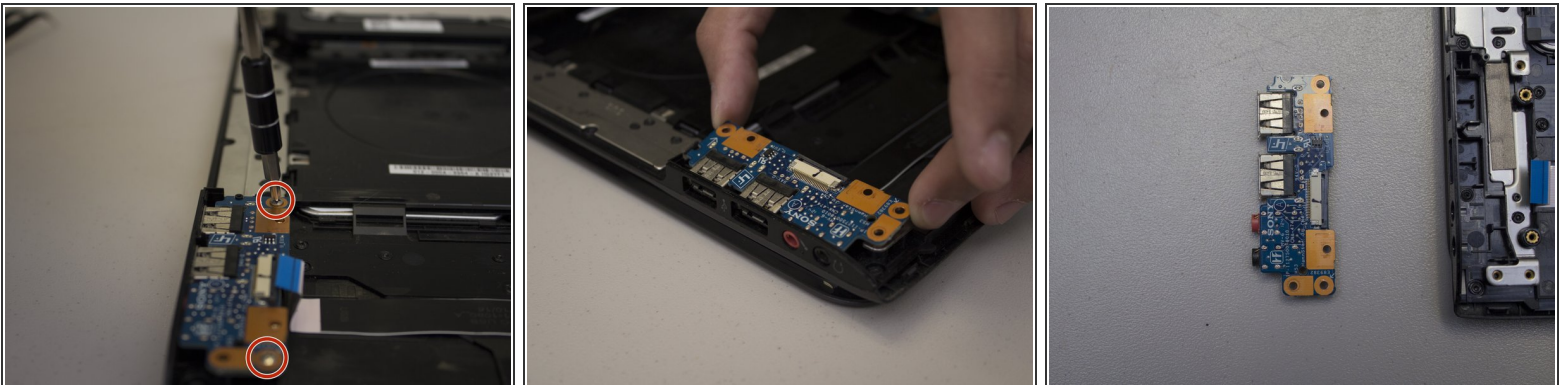
- Locate the I/O card in the bottom left hand corner (or upper right hand corner depending on which direction you have the laptop) of the case.

## Step 5



- Carefully slide the black retainer bar towards the ribbon cable with a nylon spudger until parallel.
- Carefully pull the ribbon cable out of its socket with a pair of tweezers.

## Step 6



- Remove the two screws on the corners of the I/O card using a Phillips #0 screwdriver.
- Lift the edge of the card up and away from the laptop, then pull it away from the side ports.

To put Humpty Dumpty together again, follow these instructions in the reverse order.