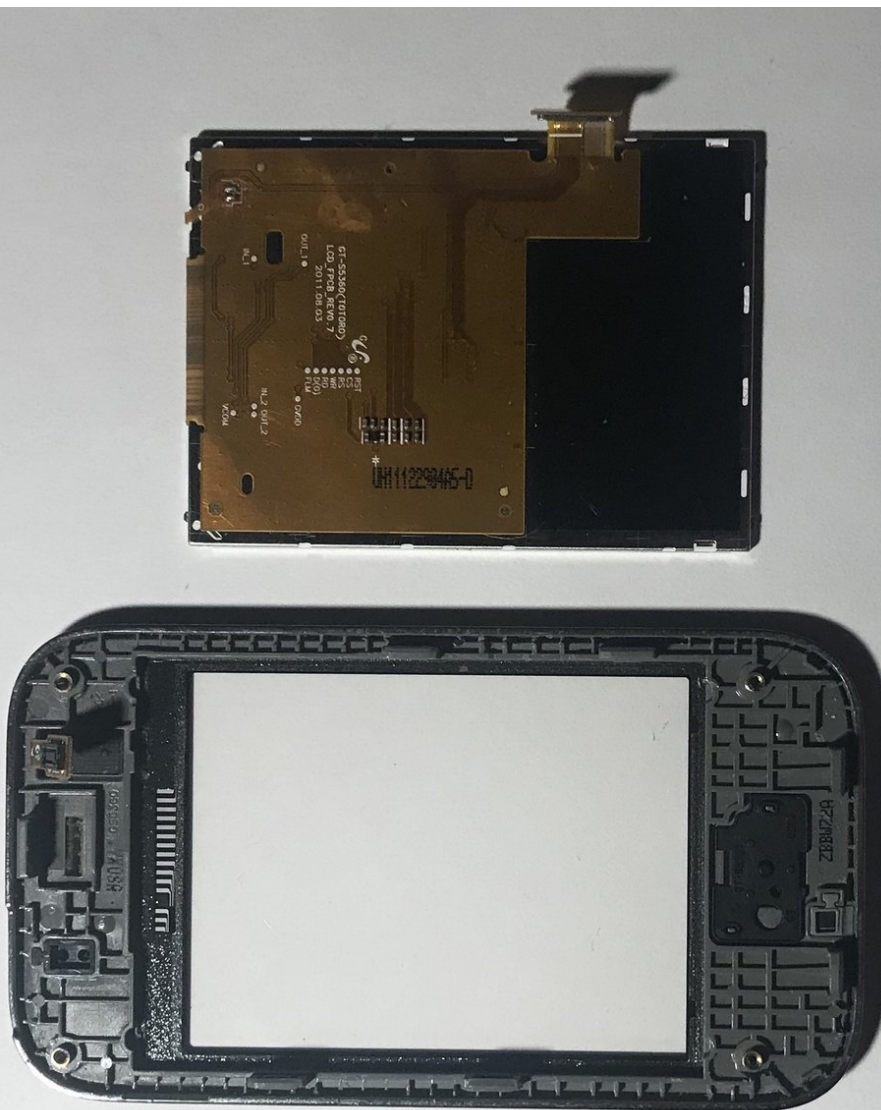




# Samsung Galaxy Y LCD Display Replacement

This guide shall detail and show how to replace the LCD Display for a Samsung Galaxy Y mobile phone.

Written By: Aidan Kurz



# INTRODUCTION

This guide shall detail and illustrate how to replace an LCD display for a Samsung Galaxy Y in the situation that the LCD is corrupt, or unresponsive,



## TOOLS:

- [iFixit Opening Tools](#) (1)
- [Metal Spudger](#) (1)
- [Tweezers](#) (1)
- [Phillips #000 Screwdriver](#) (1)



## PARTS:

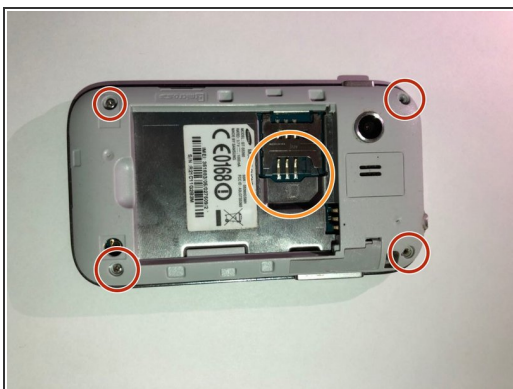
- [Samsung Galaxy Y Internal LCD Display](#) (1)

## Step 1 — Back Panel



- Use the blue plastic opening tool to pry the back-panel off of the device.

## Step 2 — LCD Display



- Use a Phillips #000 screwdriver to remove the four 5mm screws located in the corner of the interior back panel.
- Remove the SD card as well by sliding the card out of it's slot.

### Step 3



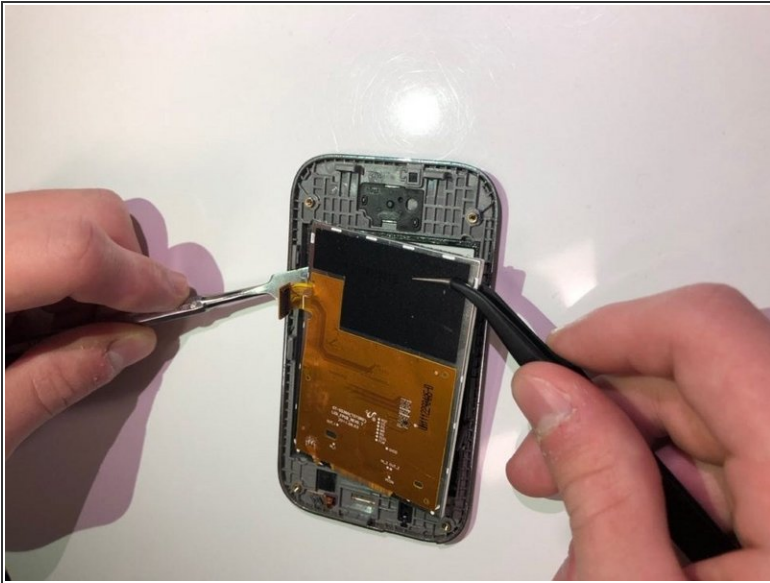
- Use the metal pry tool to separate the interior back panel from the interior hardware and screen.

### Step 4



- Disconnect the orange motherboard connection, then remove the interior hardware from the front screen display.

## Step 5



- Gently remove the LCD screen lens from the outer screen using a pair of tweezers and the metal pry tool. Replace the faulty LCD.
- The LCD maybe be glued in place, so the device might need to be heated to remove the part.

To reassemble your device, follow these instructions in reverse order.