



D-Link DCS-825L LED Light Cover Replacement

This guide will show you how to replace the LED light cover for the D-Link DCS-825L.

Written By: Annalise Leclair



INTRODUCTION

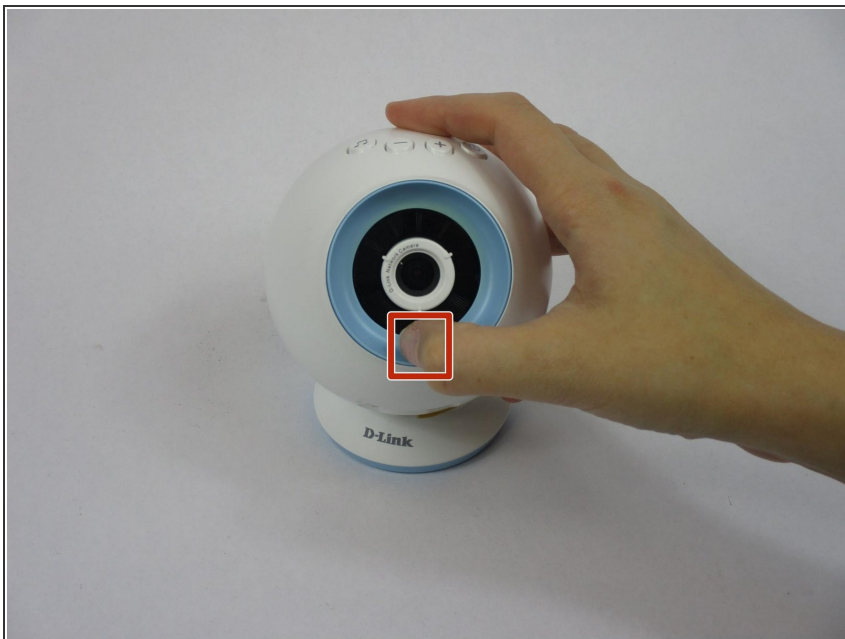
Does the LED light cover have a crack on the outer cap? Is it yellowed or discolored? This guide will show you the way to replace the LED light cover for your Wi-Fi Baby Camera.



TOOLS:

- [Phillips #2 Screwdriver](#) (1)
 - [ESD Safe Tweezers Blunt Nose](#) (1)
-

Step 1 — Accent Ring



- Grasp the side of the accent ring. There is a notch that your thumb will be able to grab ahold of.

Step 2



- Twist the accent ring until it pops off. You may need to use both hands if the accent ring is stuck.

Step 3



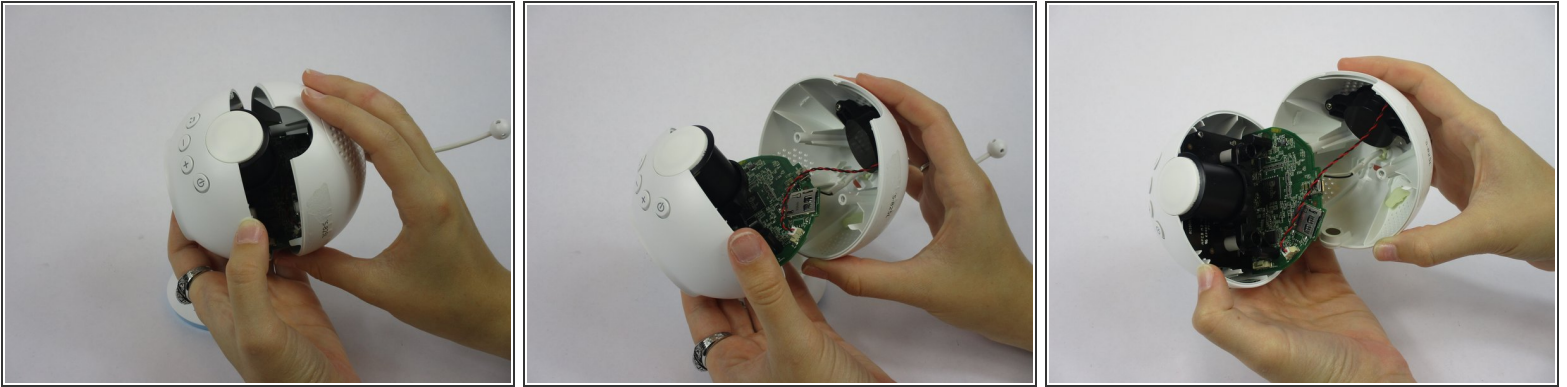
- Replace your accent ring with whichever color you choose.

Step 4 — Back Casing




- Remove one Phillips #2 screw from each side of the camera lens.

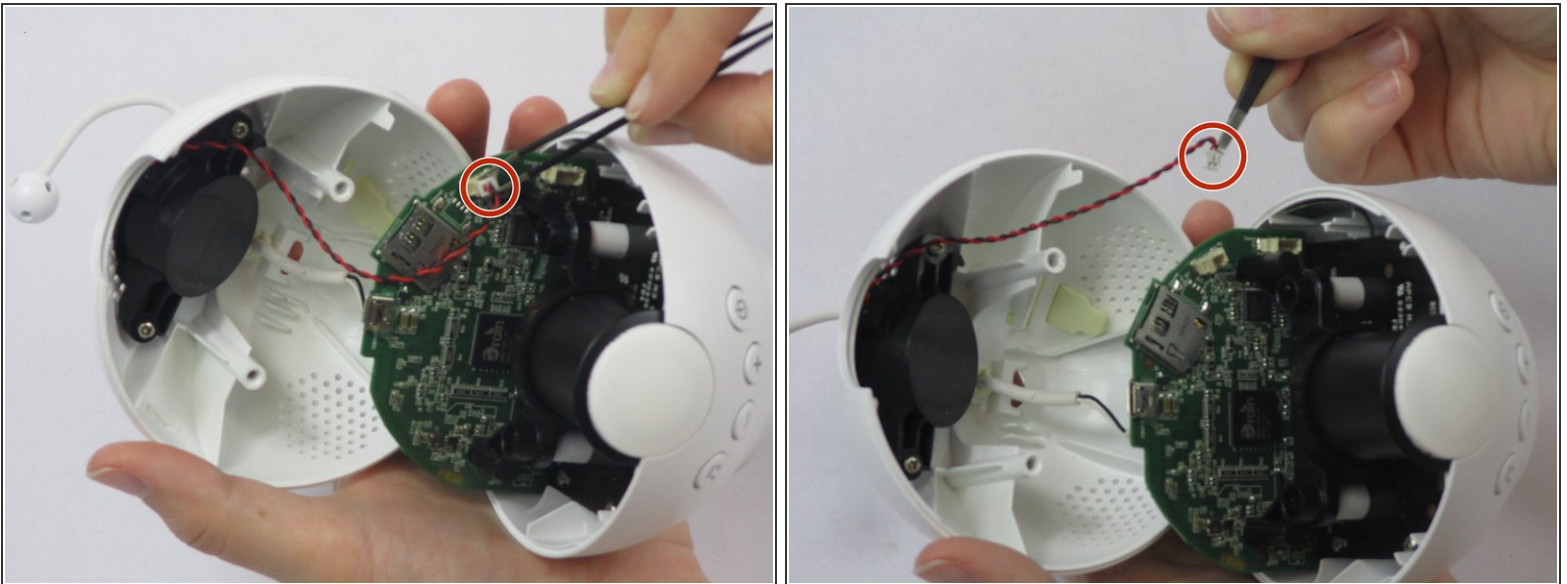
Step 5



- Pull the Wi-Fi Baby Camera open.

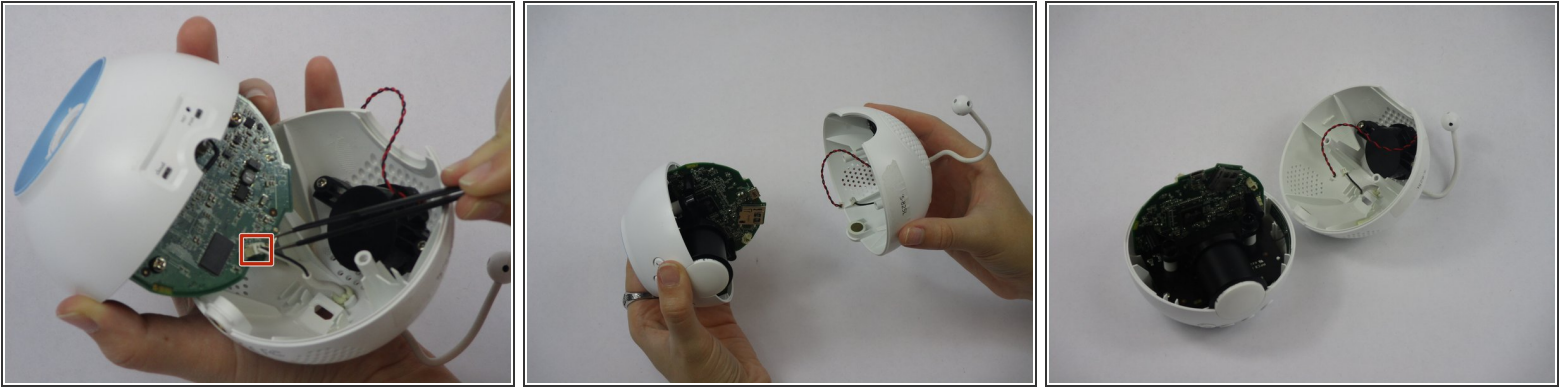
 It should be easily done after the screws are removed.

Step 6



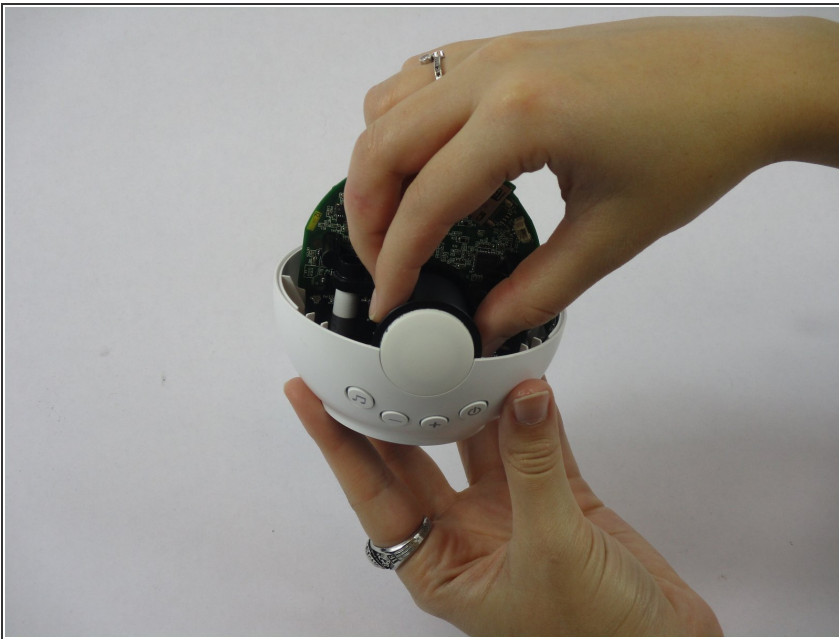
- Take your tweezers and gently pull the white tip out from its plug that is connected to a red and black twisted wire.

Step 7



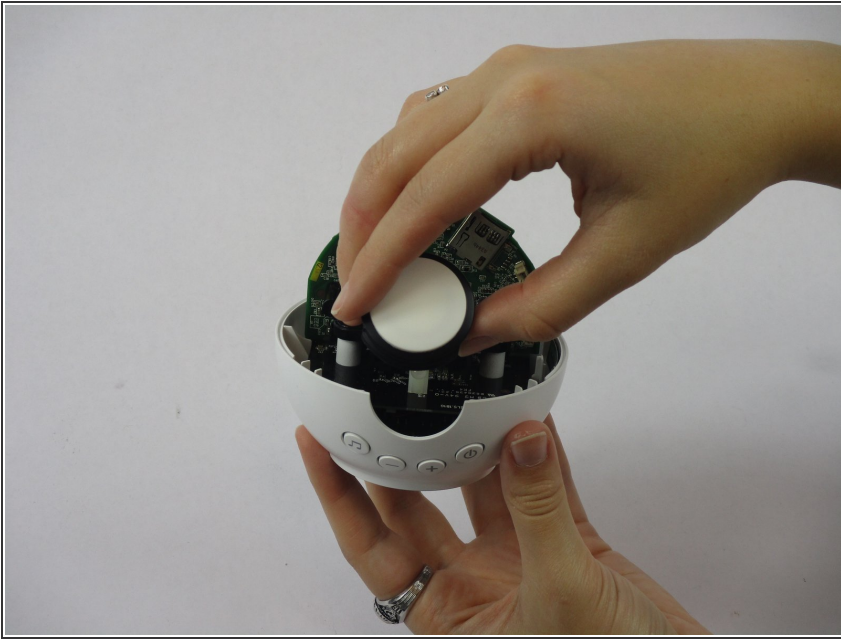
- Take your tweezers and gently pull the white tip that is on the end of the white wire (the antenna) out from its plug in.

Step 8 — LED Light Cover



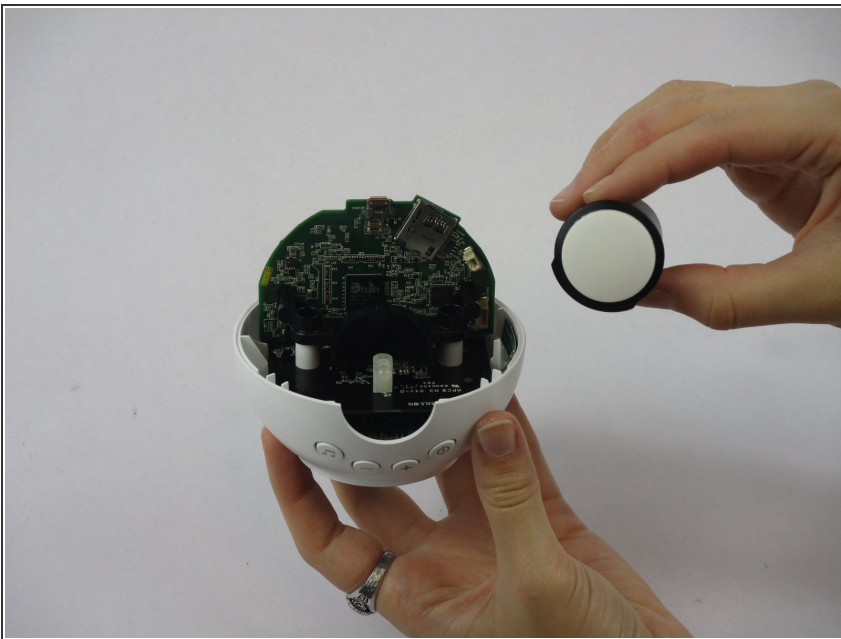
- Grab the white cylinder with your thumb and index finger.

Step 9



- Gently lift the cylinder up from its placement in your Wi-Fi Baby Camera.

Step 10



- Remove the white cylinder completely to replace it.

To reassemble your device, follow these instructions in reverse order.