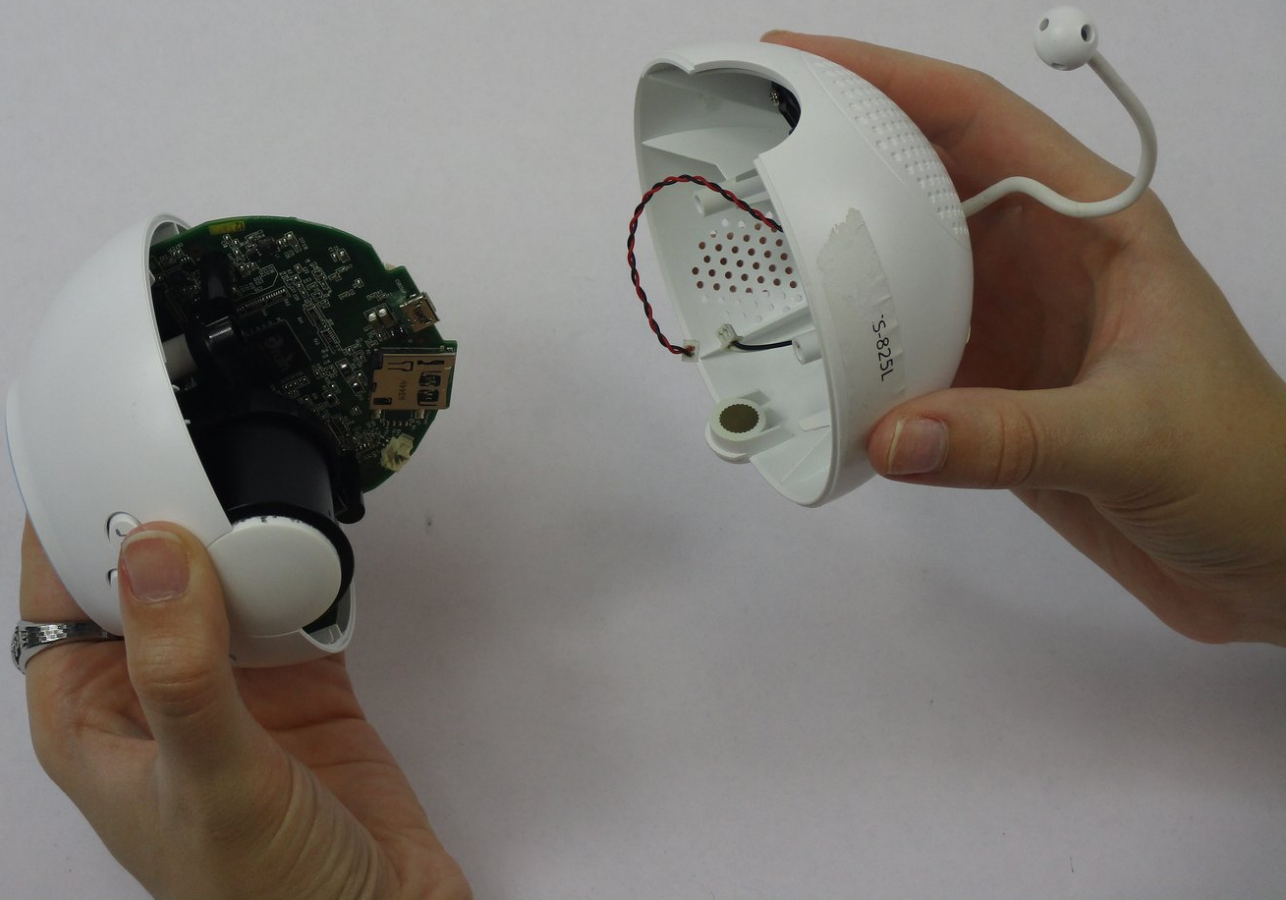




D-Link DCS-825L Back Casing Replacement

How to replace the D-Link DCS-825L back casing.

Written By: April Ulrich



INTRODUCTION

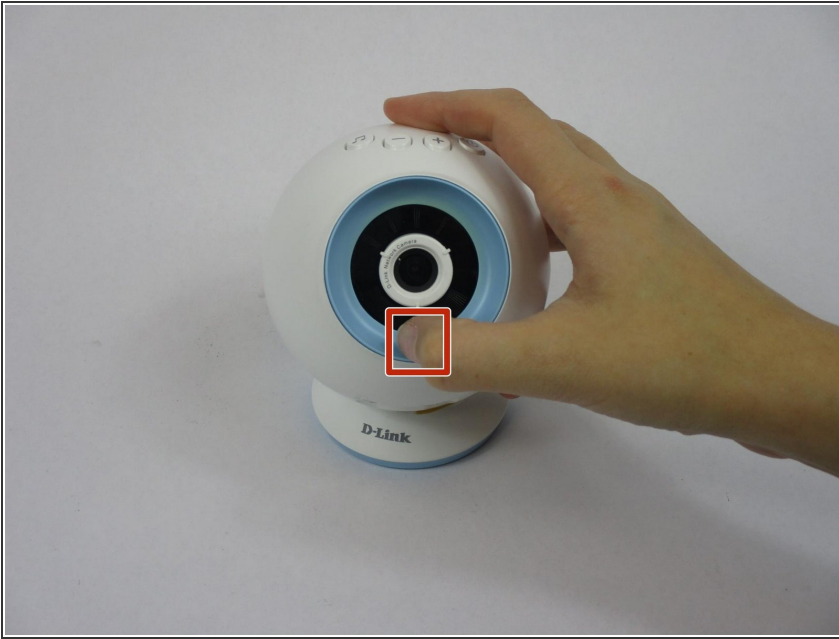
Did the back casing of your Wi-Fi Baby Camera crack? The answer to fixing and replacing that is in this guide.



TOOLS:

- [Phillips #2 Screwdriver](#) (1)
 - [ESD Safe Tweezers Blunt Nose](#) (1)
-

Step 1 — Accent Ring



- Grasp the side of the accent ring. There is a notch that your thumb will be able to grab ahold of.

Step 2



- Twist the accent ring until it pops off. You may need to use both hands if the accent ring is stuck.

Step 3



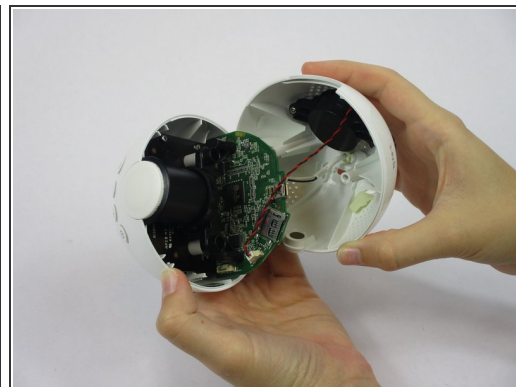
- Replace your accent ring with whichever color you choose.

Step 4 — Back Casing




- Remove one Phillips #2 screw from each side of the camera lens.

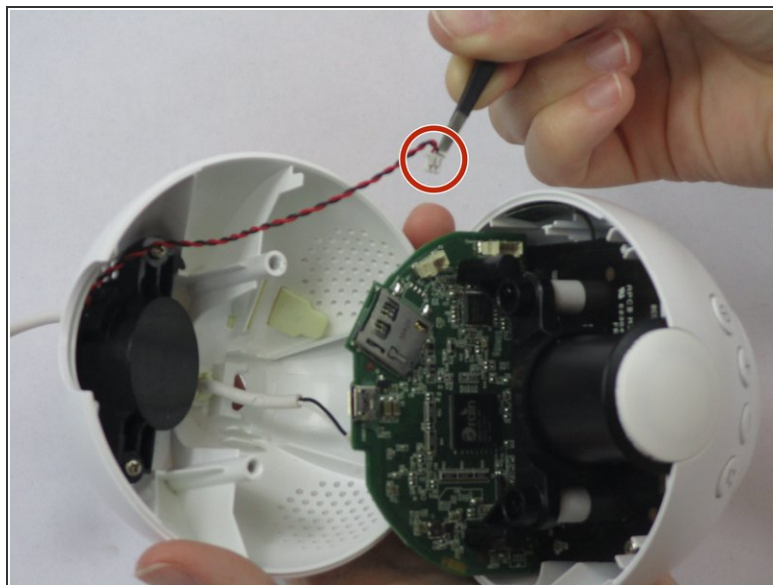
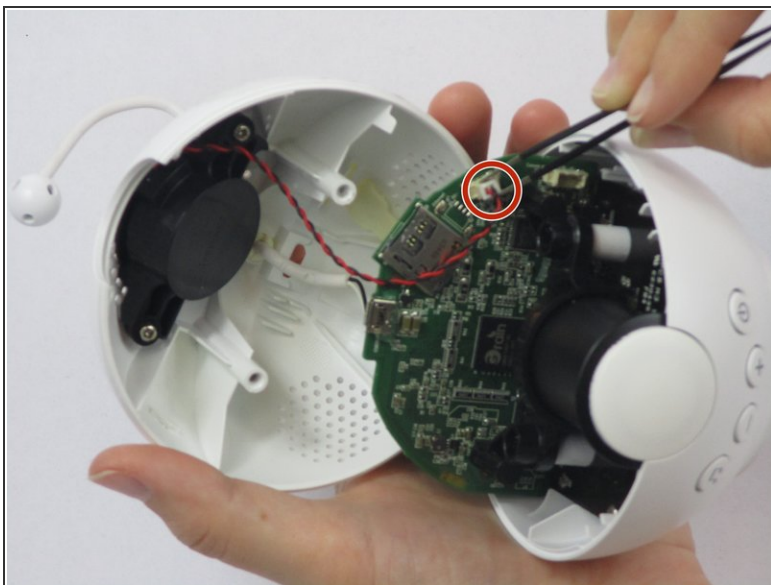
Step 5



- Pull the Wi-Fi Baby Camera open.

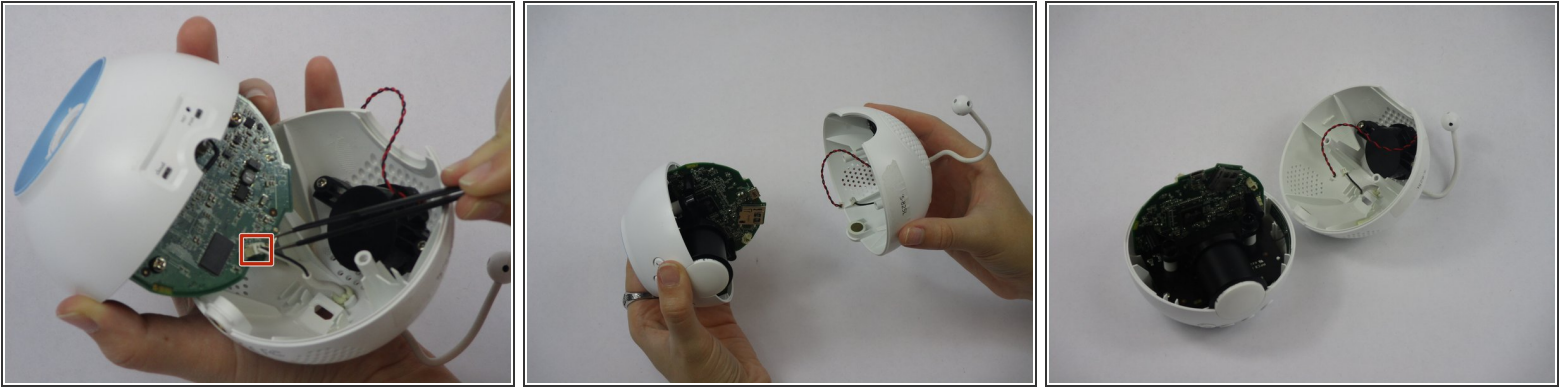
 It should be easily done after the screws are removed.

Step 6



- Take your tweezers and gently pull the white tip out from its plug that is connected to a red and black twisted wire.

Step 7



- Take your tweezers and gently pull the white tip that is on the end of the white wire (the antenna) out from its plug in.

To reassemble your device, follow these instructions in reverse order.