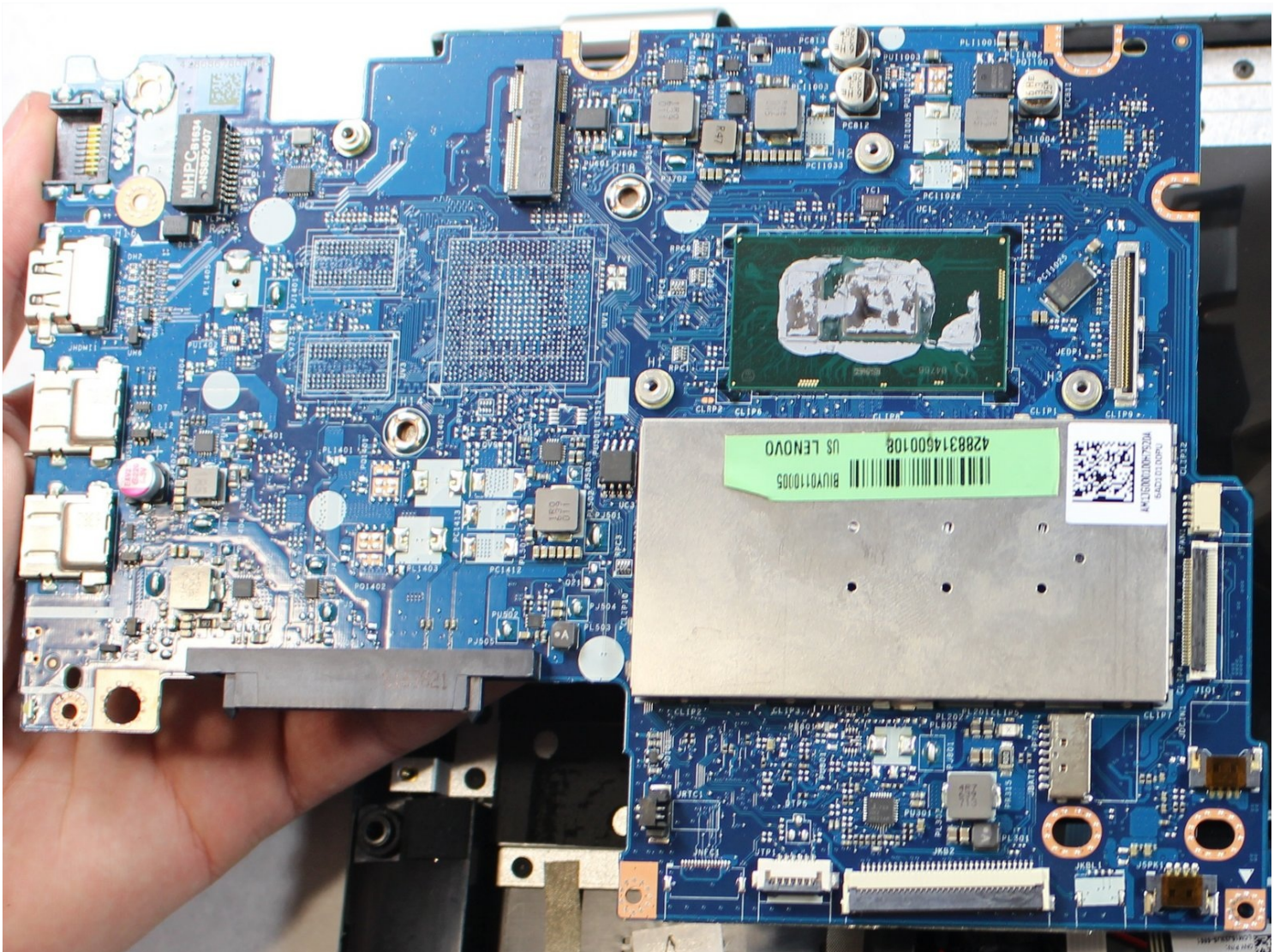




# Lenovo IdeaPad Flex 4-1470 Motherboard Replacement

This guide will help you to replace your...

Written By: Elijah Ellis



# INTRODUCTION

This guide will help you to replace your computer's motherboard, one of the most essential components of your computer. To replace this, you will have to take apart a good portion of your laptop, so be ready with sufficient tools, work area, and time.

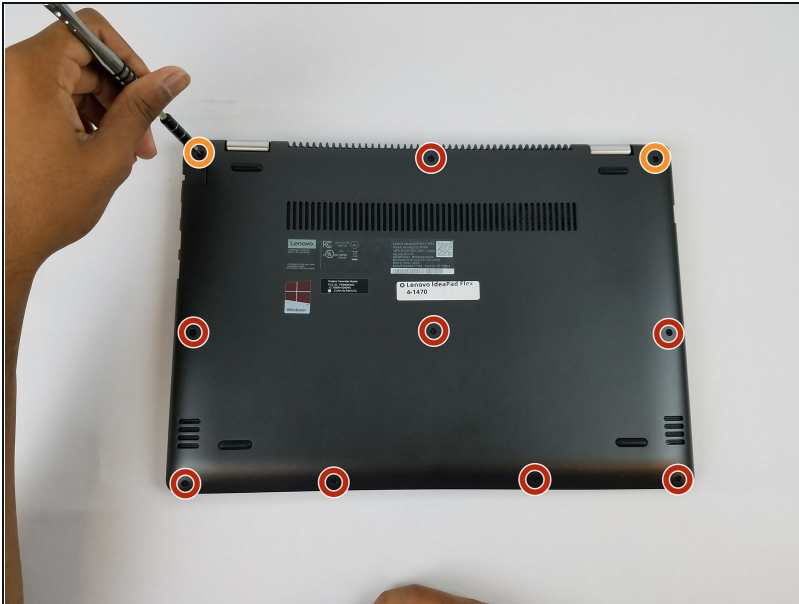
## TOOLS:


[Phillips #0 Screwdriver](#) (1)  
[iFixit Opening Tool](#) (1)  
[Tweezers](#) (1)

## PARTS:

[5B20L46045 - Lenovo Laptop](#)  
[Motherboard - Genuine](#) (1)

## Step 1 — Lower Case

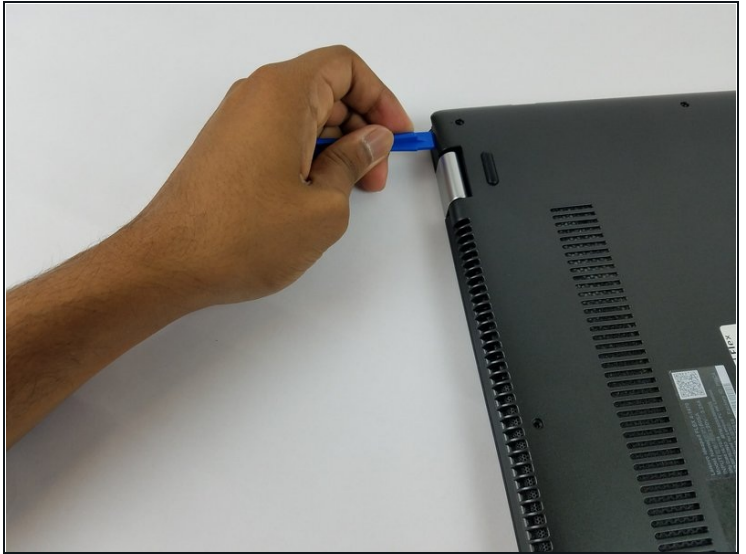
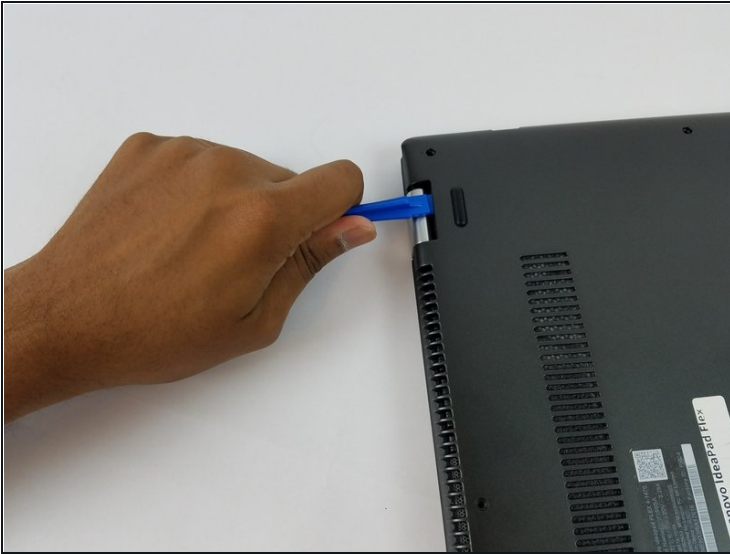


 **Ensure your computer is completely OFF before starting this guide.**

- Remove the eight 6 mm screws using a Phillips #0 screwdriver.
- Remove the two 11 mm screws using a Phillips #0 screwdriver.

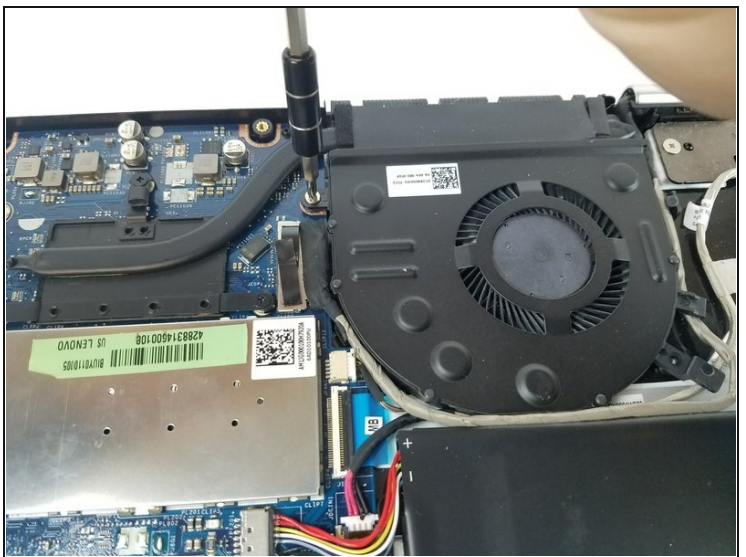
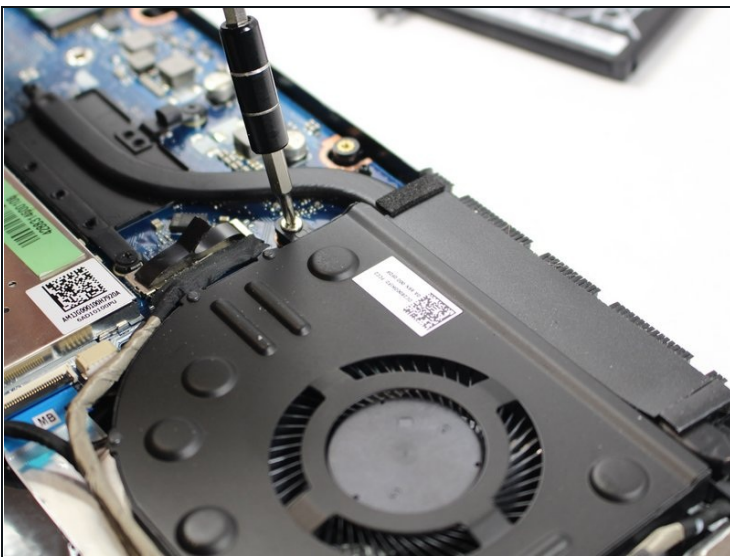


## Step 2



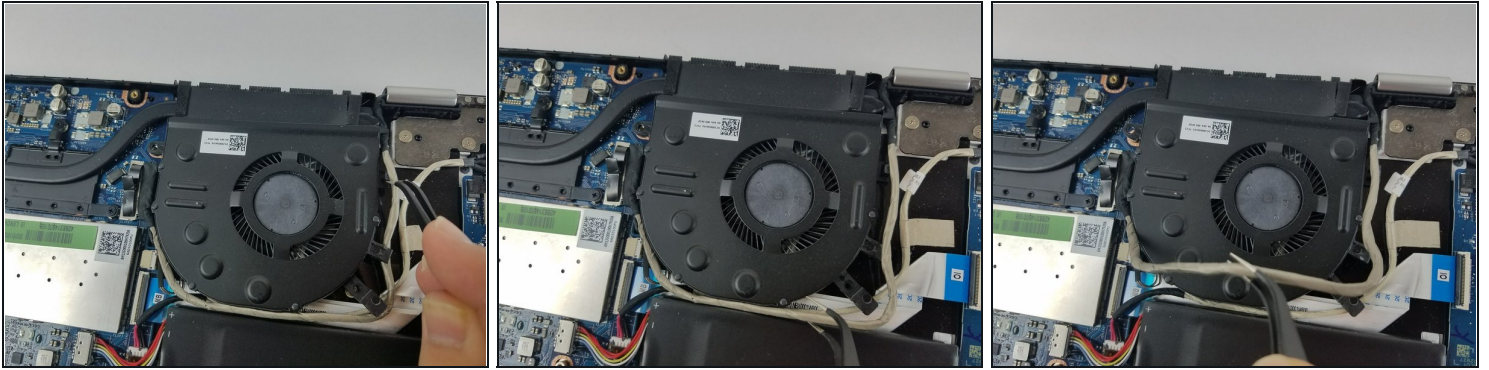
- Pry the back cover off by inserting the plastic opening tool at the hinges and wedging it between the Back cover and the body.
- Follow along the back edge with the plastic opening tool, lifting the cover off as you go. It is normal to hear snapping/clicking sounds as the back cover is held on by clips.
- Remove the cover.

## Step 3 — Cooling Fan



- Remove the two 4 mm Phillips #0 screws which mount the fan.

## Step 4



- Using the Precision [Tweezers](#), remove the 2 gray wires around the fan from their clips.

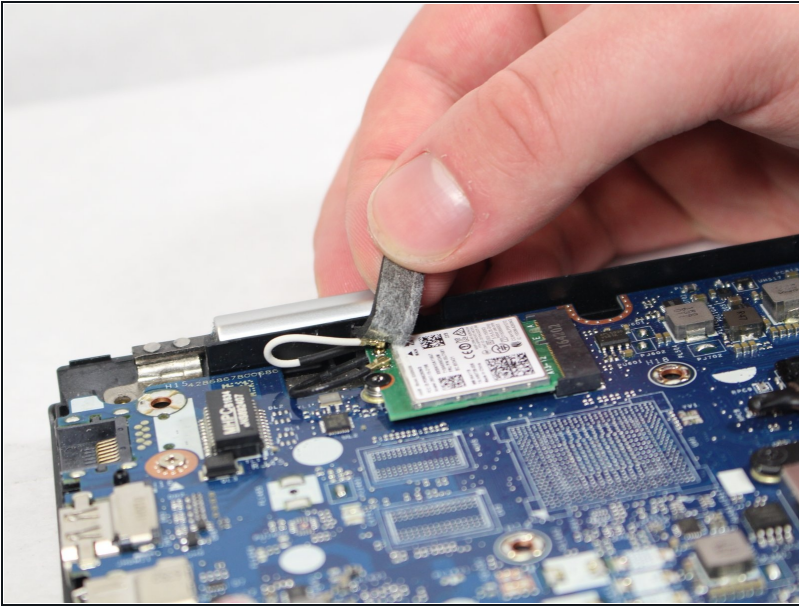
## Step 5



- Use 2 plastic opening tools to remove the fans power wire from the Mother board and remove the fan.
- Lift the cooling fan out of the laptop.

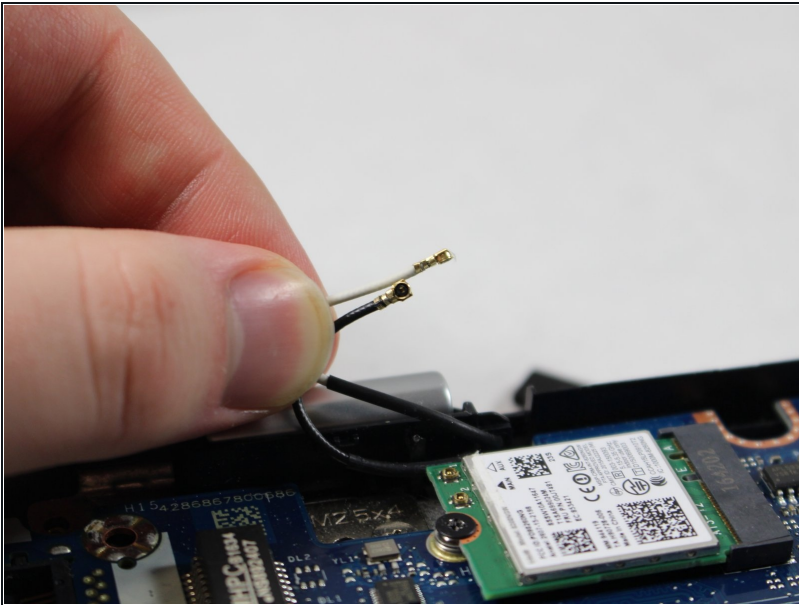


## Step 6 — Wifi Card



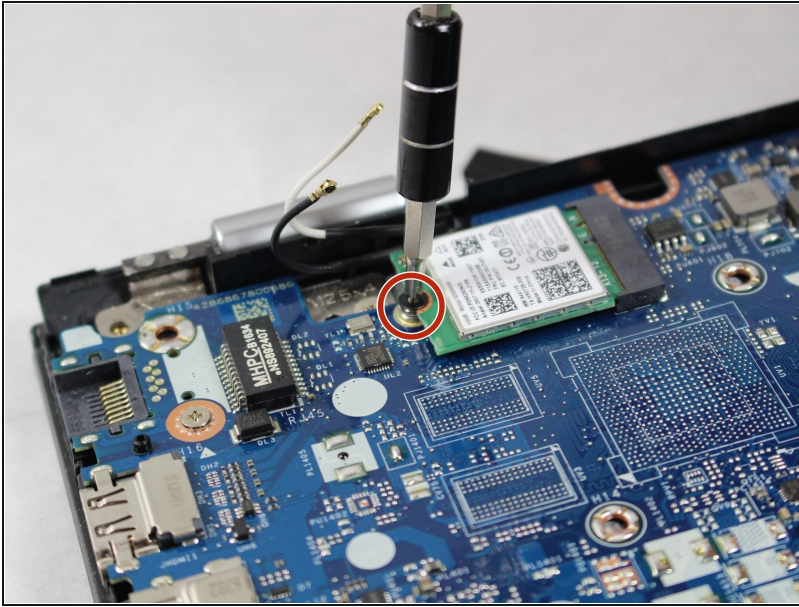
- Remove the foam on the WIFI card.

## Step 7



- Remove the wires attached to the WIFI card.

## Step 8



- Unscrew the 4mm screw holding wifi card.

## Step 9 — Motherboard



- Unscrew the twelve 4mm screws with a #0 Phillips screwdriver.

## Step 10



- Remove the motherboard.
- ☑ The motherboard will be in place when the screw holes line up.

---

To reassemble your device, follow these instructions in reverse order.