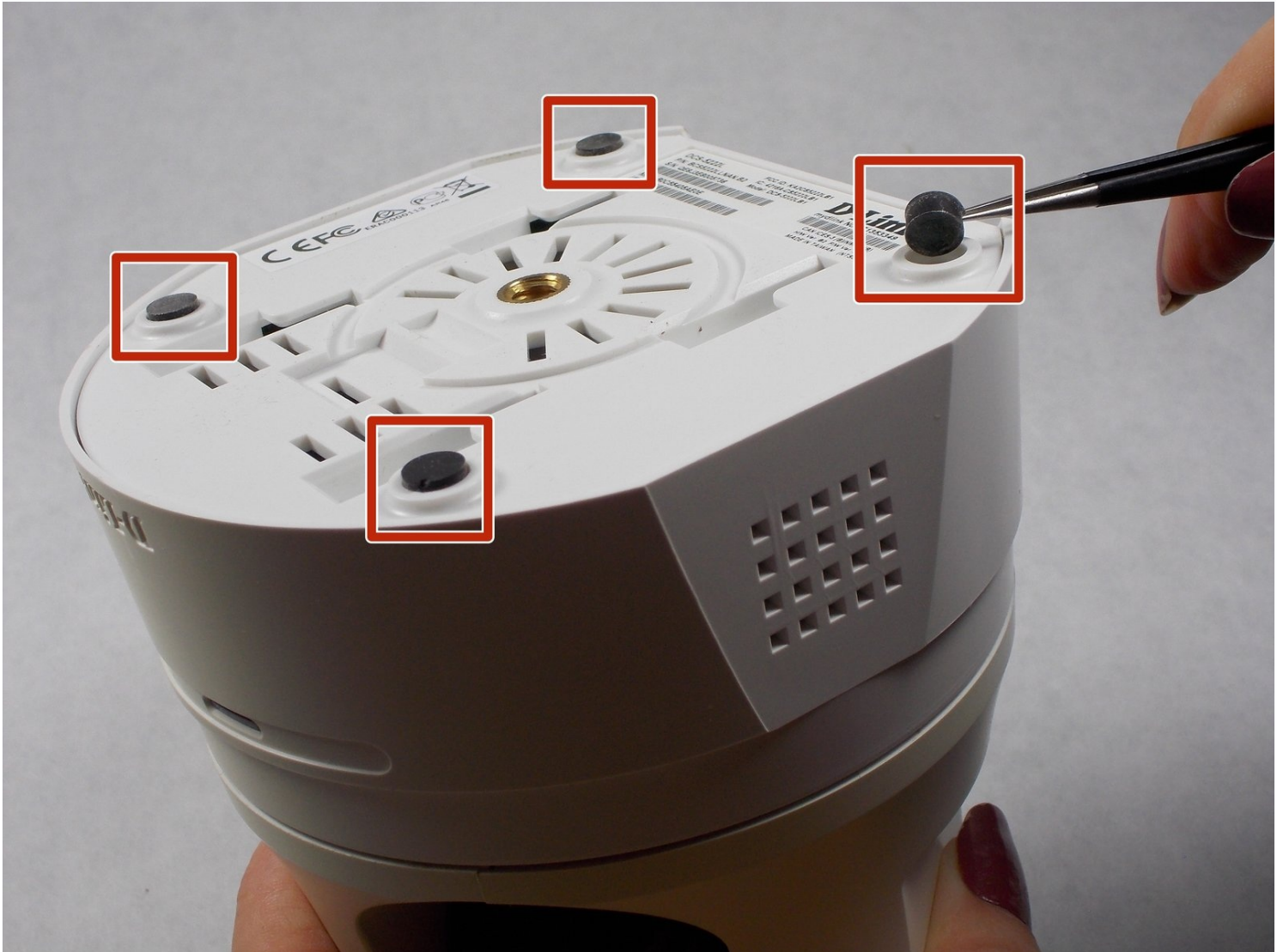




# D-Link DCS-5222L Lens Replacement

If the security camera image is not clear or...

Written By: Atefeh Rahmani



# INTRODUCTION

If the security camera image is not clear or does not show any picture, at first, take a look at the lens of the camera. If the lens of the camera was scratched or broken follow this replacement guide to replace the broken lens with a new one.

## TOOLS:

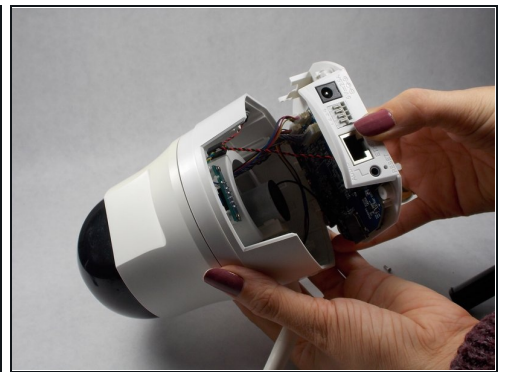
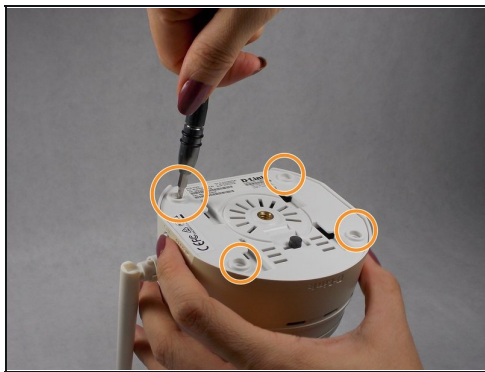
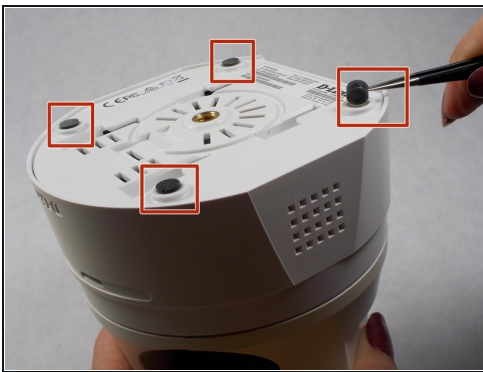
Phillips #1 Screwdriver (1)

iFixit Opening Tool (1)

Tweezers (1)

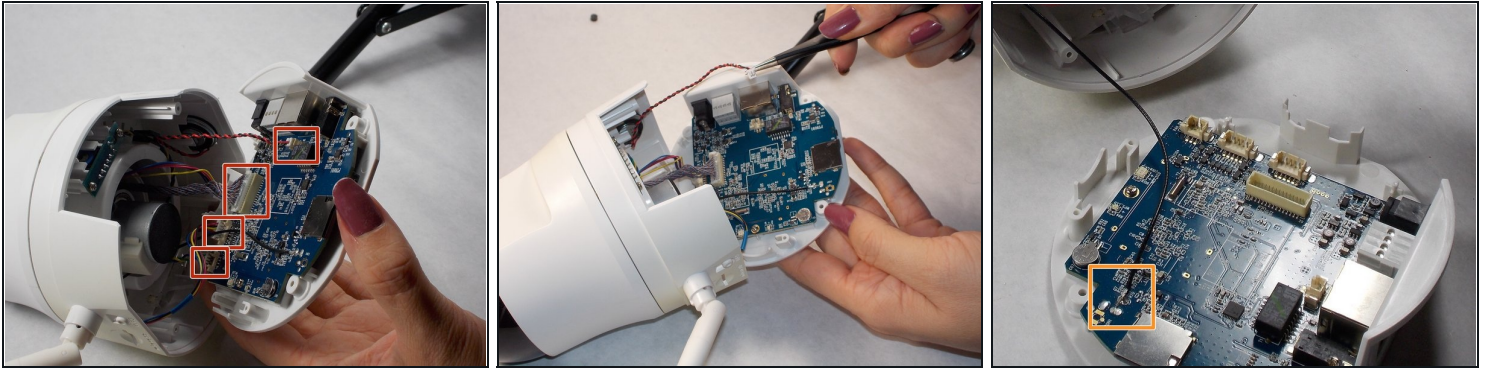
Phillips #0 Screwdriver (1)

## Step 1 — Lens



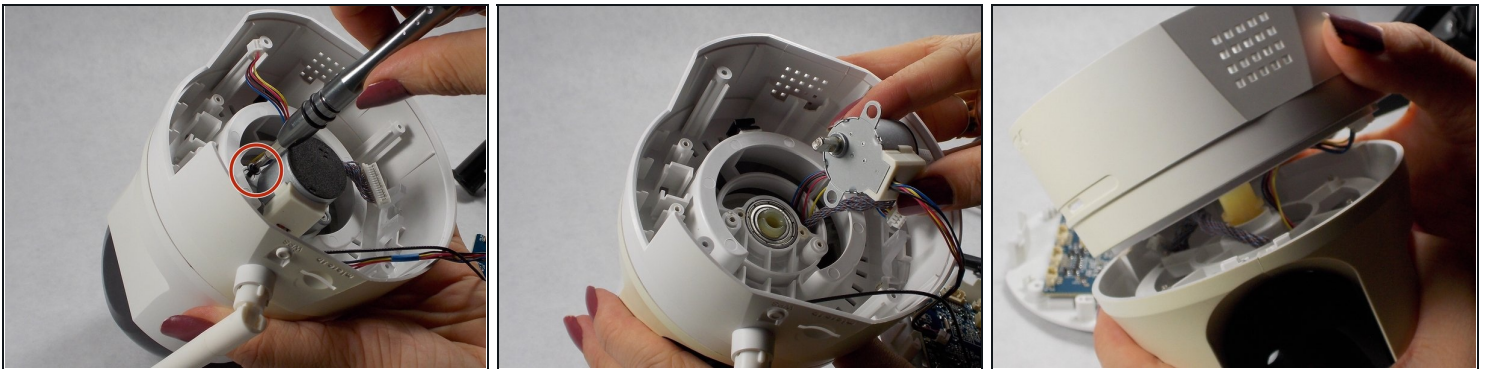
- Remove the four rubber feet with [tweezers](#) to access the screws.
- Remove all four 7mm screws by using a #1 Phillips screwdriver.
- Then, with your hands, pull off the lower part of the camera body.

## Step 2



- On the base motherboard, there are five connecting cables. Disconnect all of them from the motherboard gently using safety tweezers.
- ① Do not cut or damage the cables.
- ① Disconnecting the antenna cable from motherboard is not necessary.

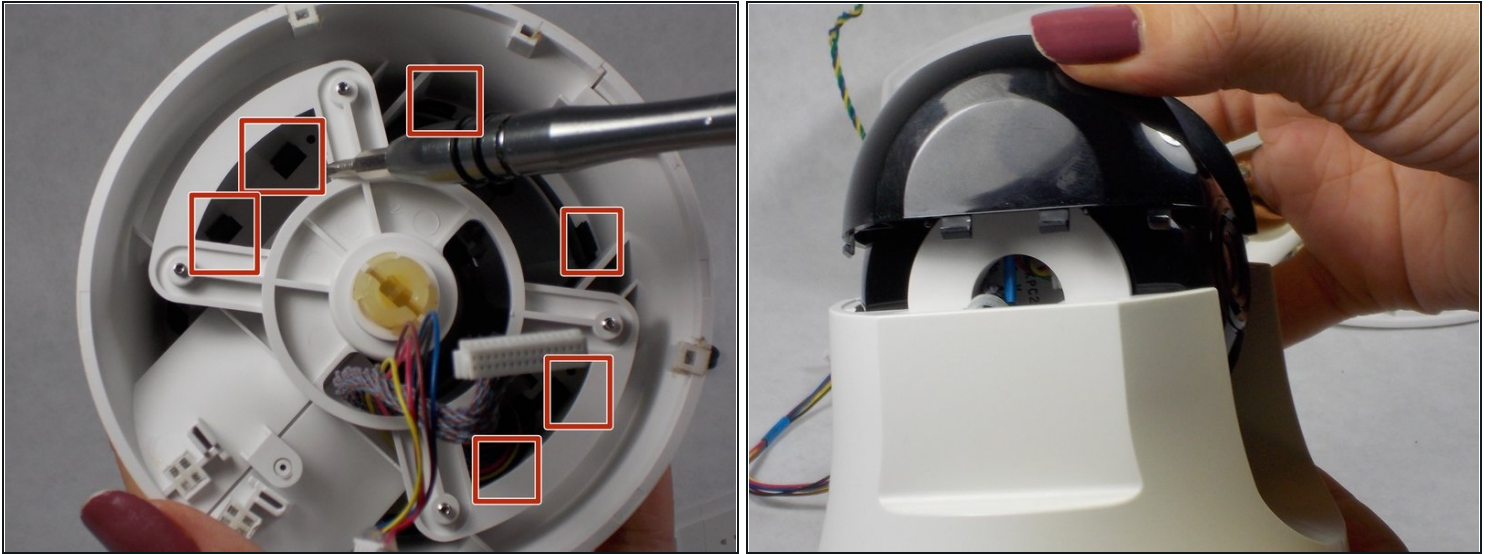
## Step 3



- Remove the two 7mm screws holding the motor using a #1 Phillips screwdriver.
- Pull off the motor and lift away the midbody of the camera using your hands.



## Step 4



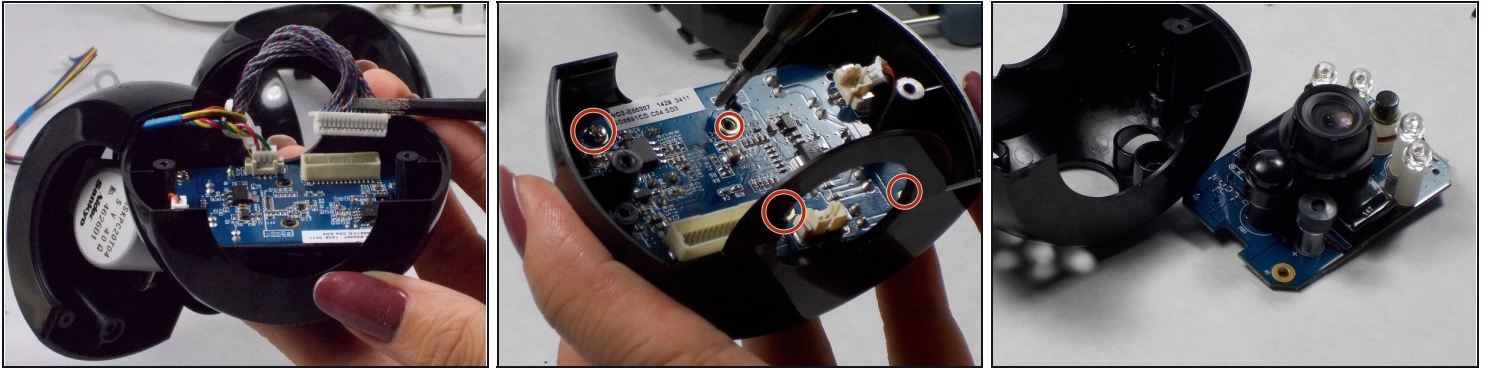
- Separate the black camera shroud from the upper body by prying loose the tabs with a plastic opening tool or spudger.
- Use your hands to wiggle the shroud free.

## Step 5



- Use a #1 Phillips screwdriver to unscrew the four 5mm screws on both sides of the black camera housing to separate it from white body.
- Unscrew the two 7mm #1 Phillips screws on both sides of the camera housing to open it.

## Step 6



- Gently disconnect the three cables from the small motherboard using safety tweezers.
- Use a #0 Phillips screwdriver to remove the two black 2mm screws and a #1 Phillips screwdriver to remove the 2 silver 6mm screws.
- Separate the board from the black housing.

## Step 7



- Using your fingers, remove the focus adjustment ring.
- Twist the lens to unscrew it from the camera module.
- Replace the broken lens with new one and reassemble all parts of the camera respectively.

---

To reassemble your device, follow these instructions in reverse order.