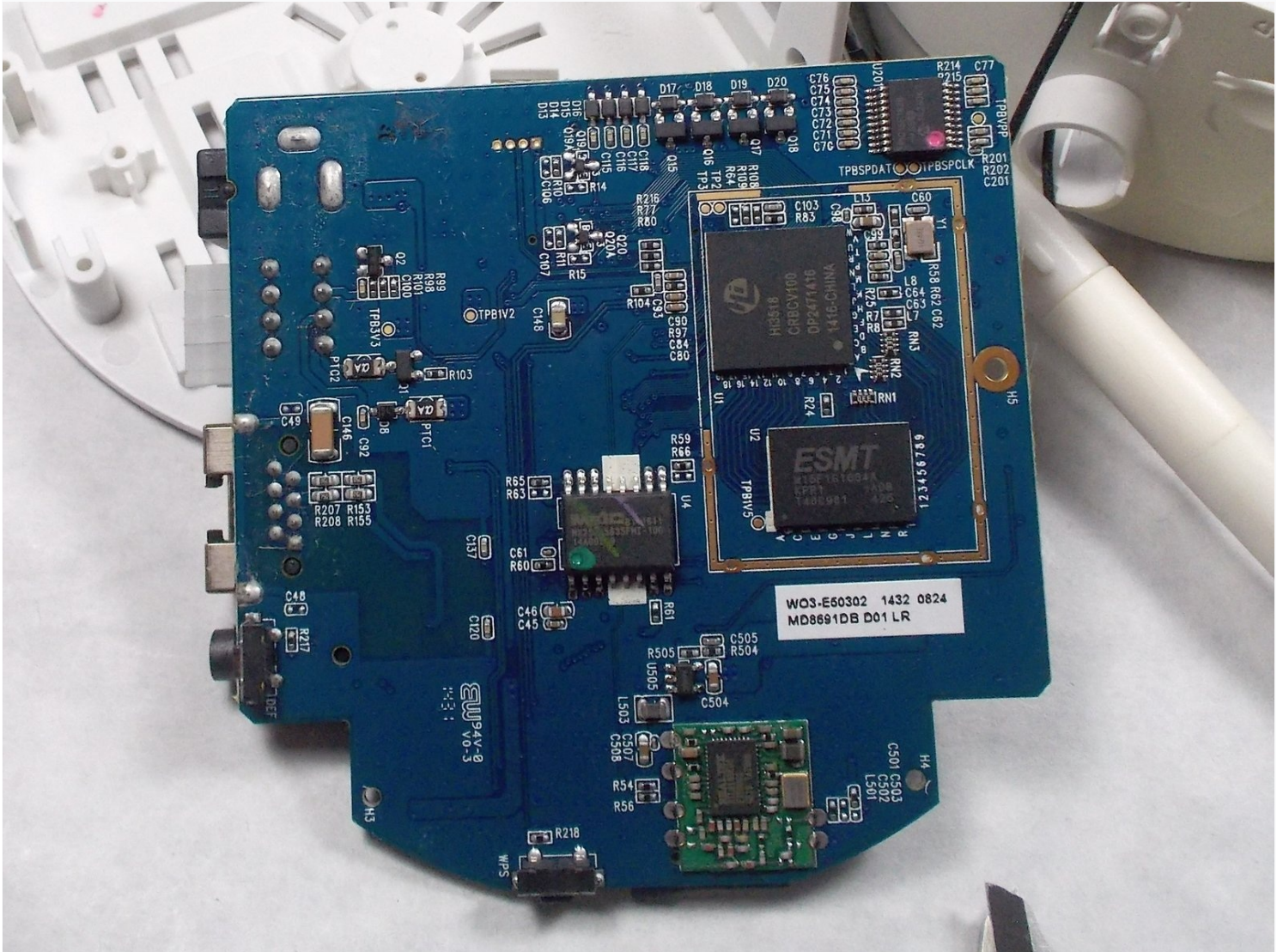




D-Link DCS-5222L Motherboard Replacement

The root of many problems may lie in a faulty...

Written By: Ryan Null



INTRODUCTION

The root of many problems may lie in a faulty motherboard. Since the motherboard is the device's brain, failure with the motherboard can cause many problems. Here you can find how to replace the motherboard to restore functionality. You will need a #1 Phillips head screwdriver, a pair of blunt ended tweezers, and a soldering iron.

TOOLS:

Phillips #1 Screwdriver (1)

Portable Soldering Iron (1)

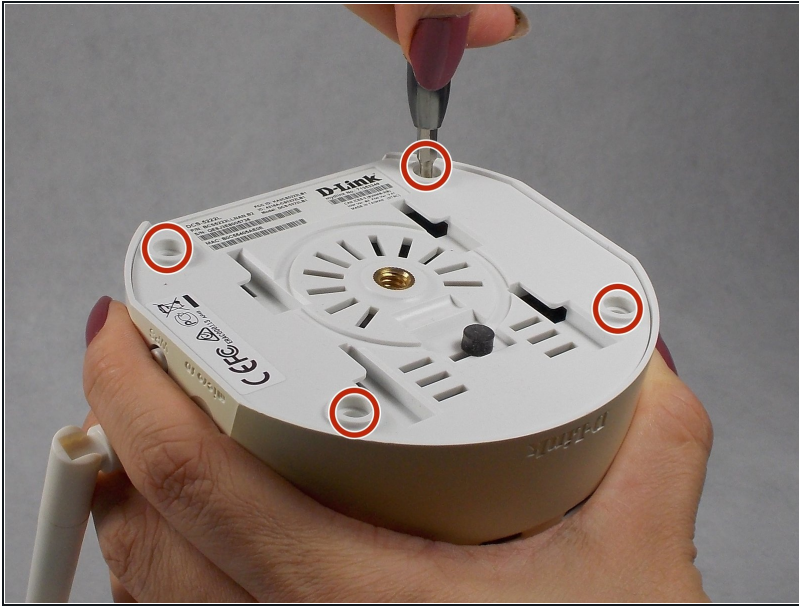
ESD Safe Blunt Nose Tweezers (1)

Step 1 — Motherboard



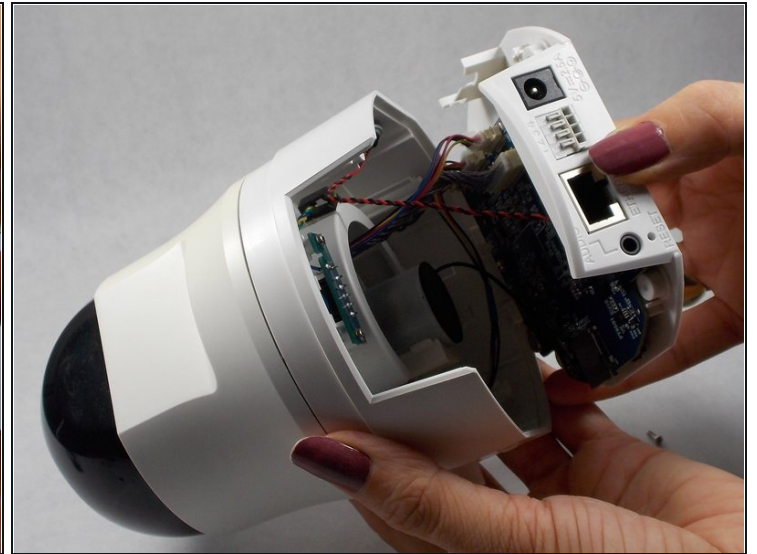
- Remove the four rubber feet on the bottom of the camera using your fingers or a pair of [tweezers](#).

Step 2



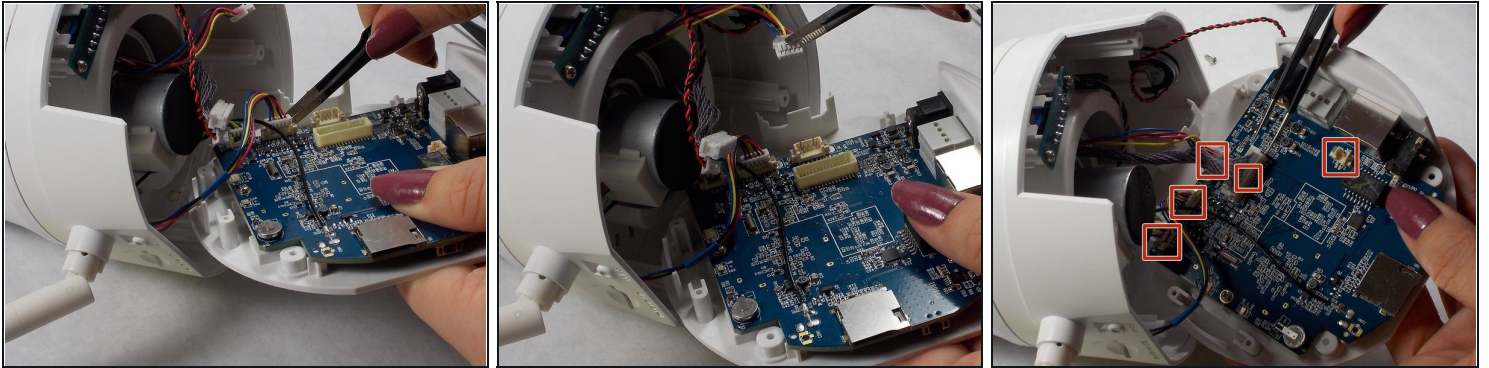
- Using a #1 Phillips screwdriver, remove the four 7mm screws that are exposed by the removed feet.

Step 3



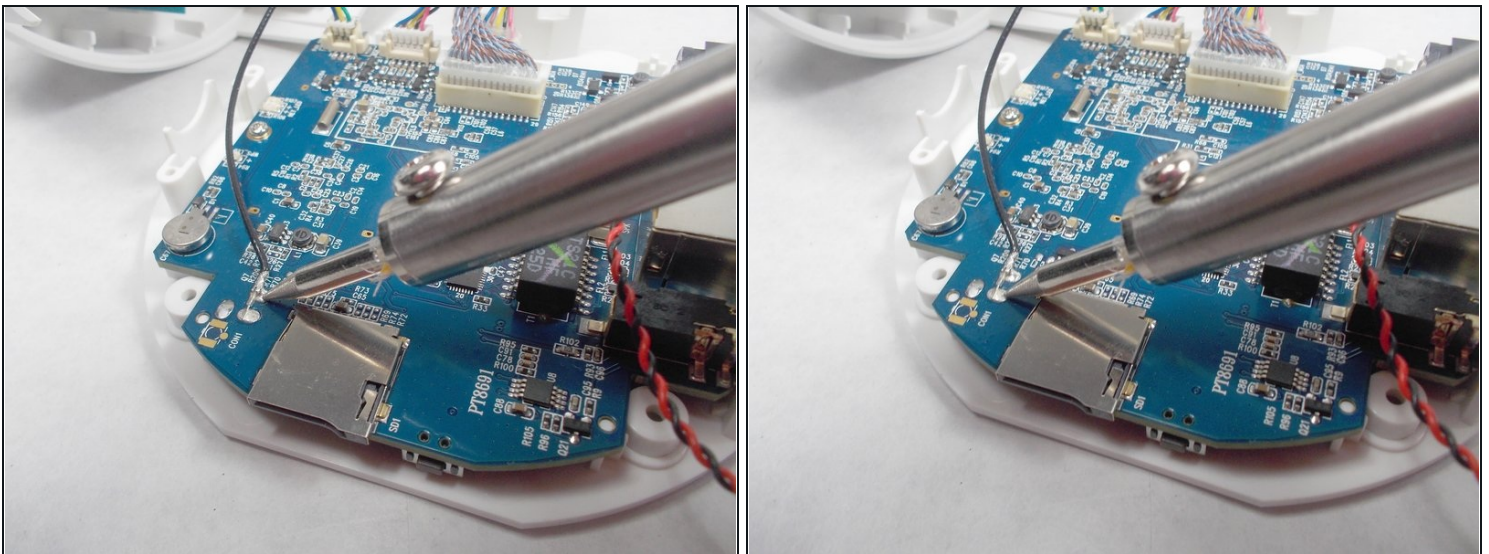
- Using your hands, open the camera body by wiggling the bottom free from the upper shell.
- ① Open the shell carefully, as the motherboard is attached to the bottom of the body; all of the components in the upper body are accordingly connected to the bottom. Likewise, the WiFi antenna is mounted to the upper shell, but a wire connects it to the motherboard on the bottom of the body.

Step 4



- Disconnect the five quick connections attaching the various cables to the motherboard with your fingers or blunt ended tweezers.

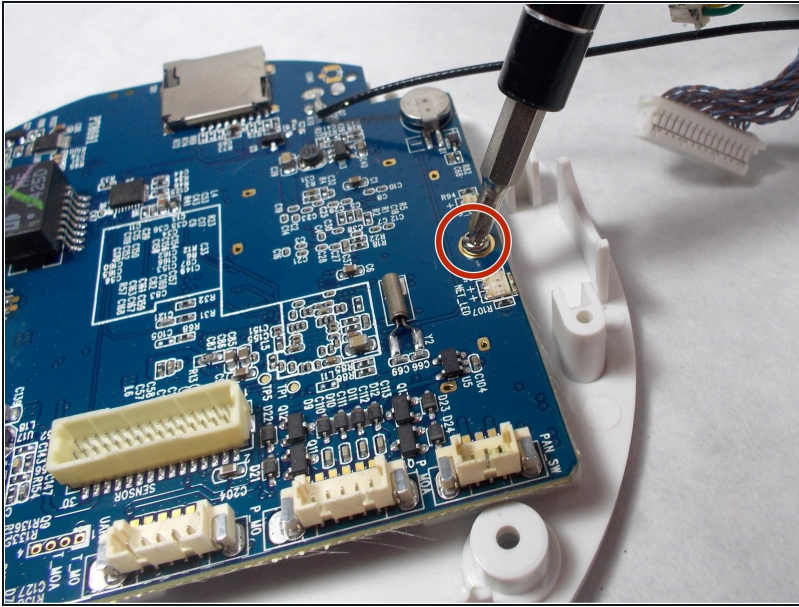
Step 5



- Using your soldering iron, heat the antenna contacts on the motherboard until the wire releases.

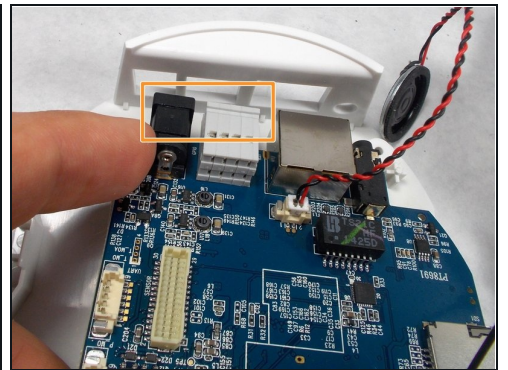
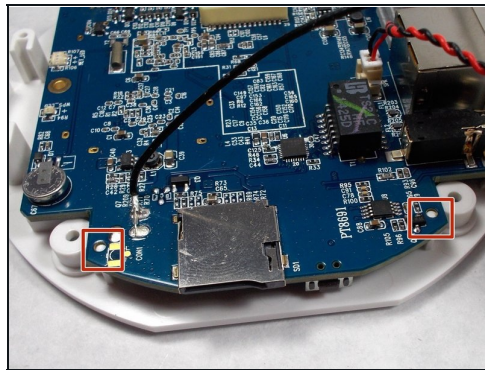
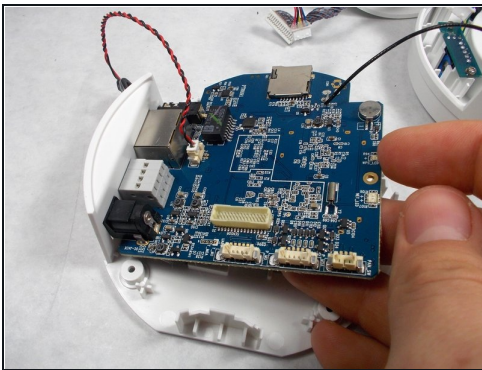
⚠ Soldering Irons are hot and can burn you and ignite flammable materials.

Step 6



- Using a #1 Phillips screwdriver, remove the single 7mm screw holding the motherboard in place.

Step 7



- Wiggle free the motherboard from the bottom of the body.
- There are two pegs that limit the motherboard's rotation. Have some patience when wiggling it free.
- The power and ethernet ports have ledges along their top surface. These must be removed from the body at an angle relative to the horizontal.

To reassemble your device, follow these instructions in reverse order.