



Dell Latitude E6520 LCD Screen Replacement

How to replace a Dell Latitude E6520 LCD screen.

Written By: Alec Weiss



INTRODUCTION

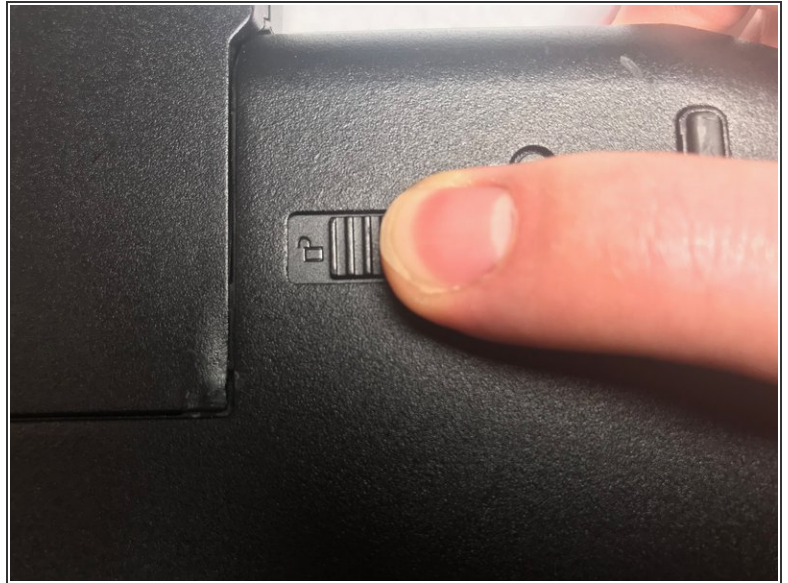
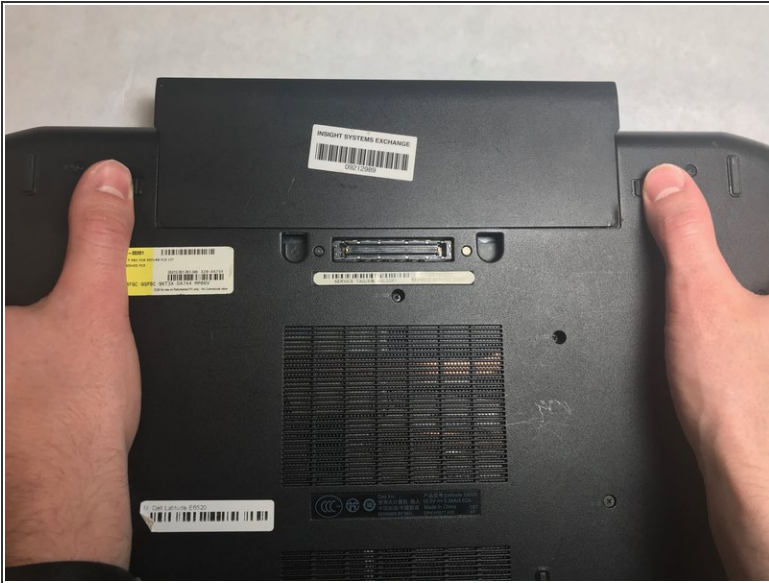
The LCD (liquid crystal display) screen may need to be replaced if it is cracked or to improve resolution.



TOOLS:

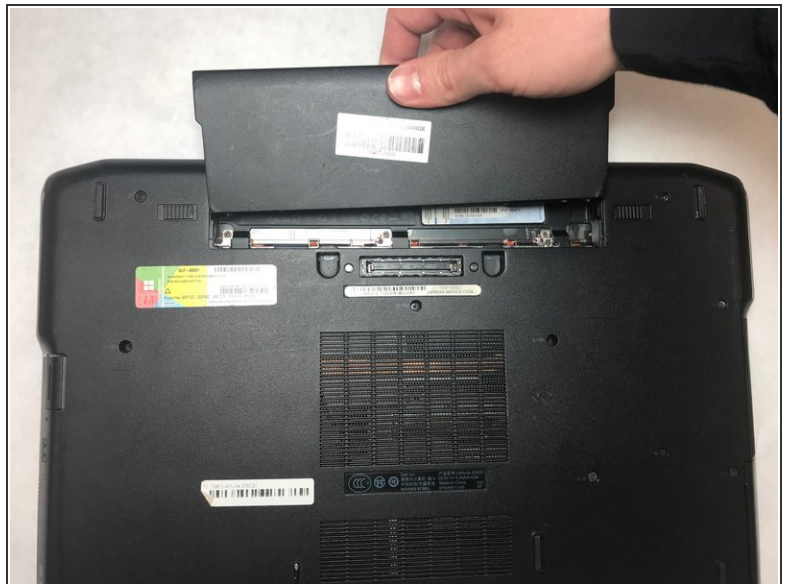
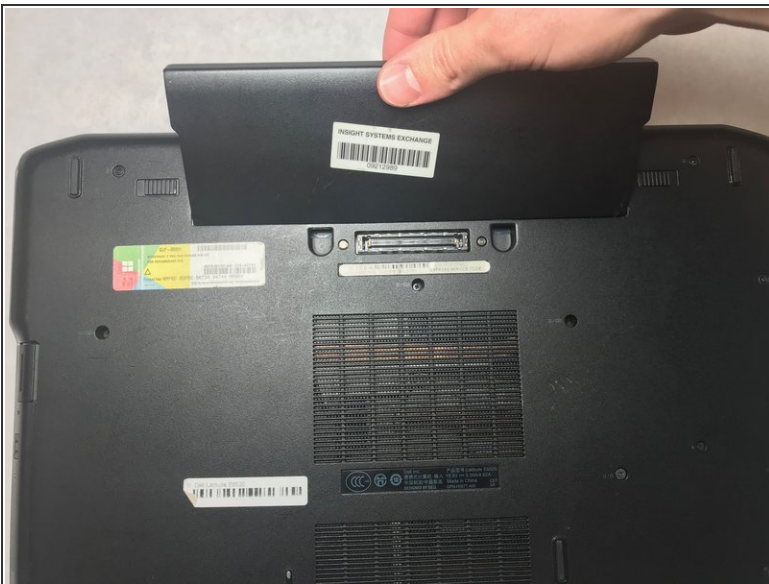
- [JIS #0 Screwdriver](#) (1)
-

Step 1 — Battery



- With the laptop closed and the bottom side facing up, slide the two battery latches towards the sides of the laptop.
- ⓘ When the latches are unlocked, a small logo resembling an open padlock will become visible.

Step 2



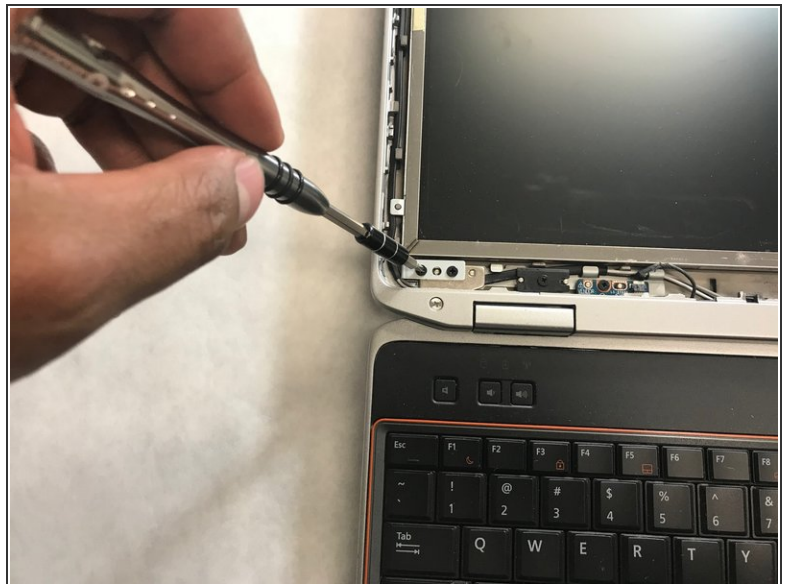
- Grasp the battery from the top and pull upward.

Step 3 — LCD Screen



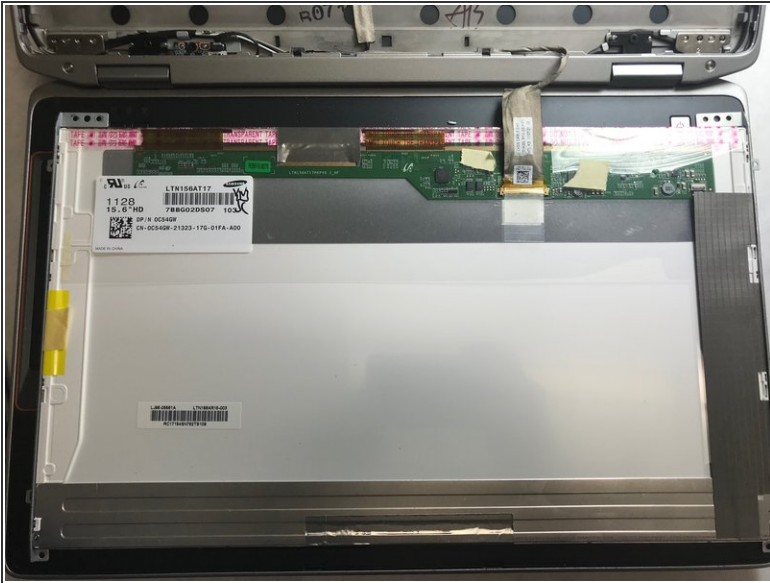
- Gently pry the protective LCD cover from around the screen. You shouldn't have a problem just using your fingers.

Step 4



- Remove the six 5.75 mm JIS #0 screws that hold the LCD screen to the cover.

Step 5



- Once all the screws have been removed, lay the screen down on the keyboard and disconnect the LCD cable.

To reassemble your device, follow these instructions in reverse order.