



Sony VAIO PCG-61411L Teardown

I did a complete teardown to replace the case, this may help you even if you don't need to go quite as far as I did.

Written By: [geekinthebasement](#)





TOOLS:

- [Essential Electronics Toolkit](#) (1)
-

Step 1 — Sony VAIO PCG-61411L Teardown



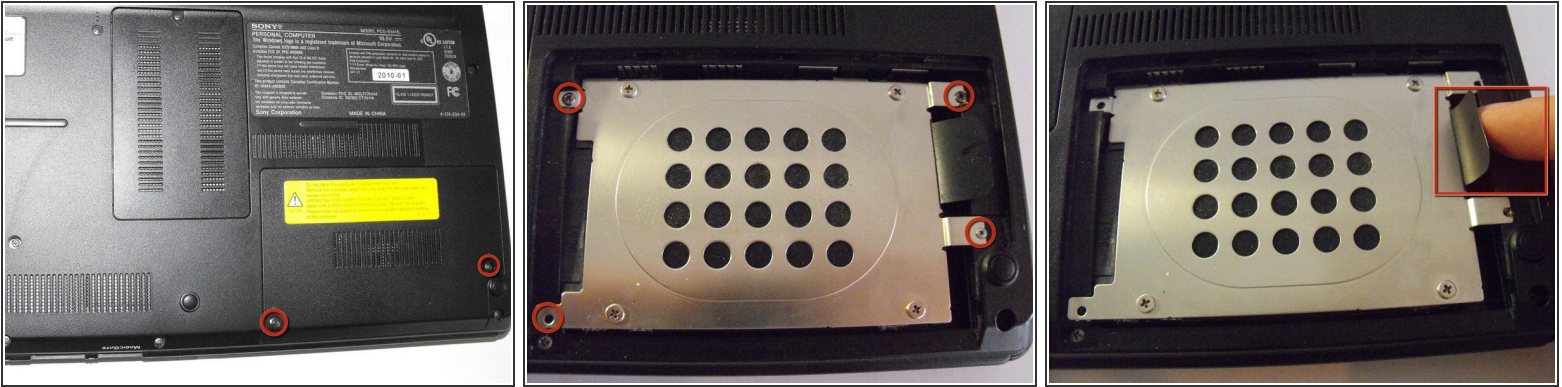
- In this guide I'll be doing a full disassembly of a Sony VAIO PCG-61411L laptop. My hope is that you will find some helpful information here and possibly save some money! lets get started!

Step 2



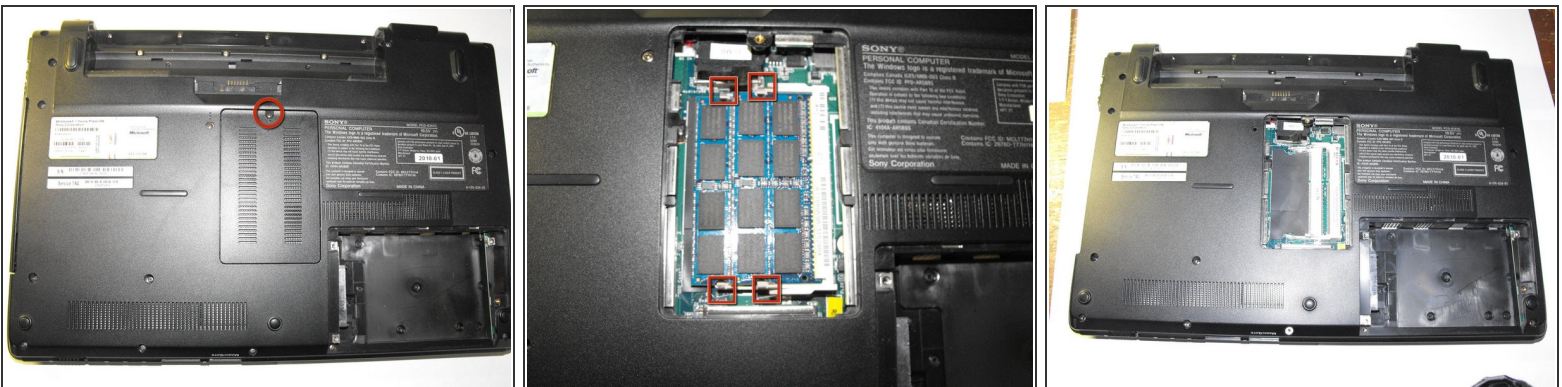
- First unlock the battery with the sliding locks (marked with orange indicators), and lift battery up and out.
- ⓘ When working with laptops always remove batteries or charging cords first, if possible, as powering the unit while touching the components can be fatal to you or the device!

Step 3



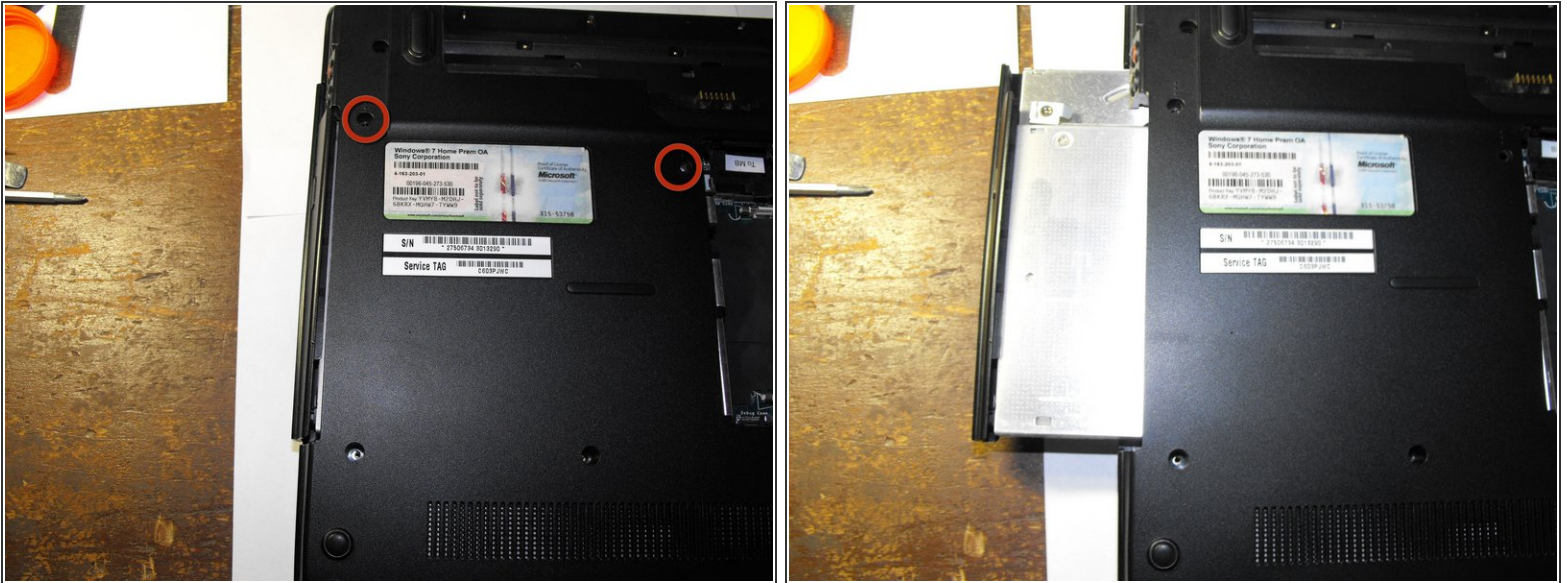
- Next loosen the hard drive cover screws as shown (marked with red indicators picture 1) And remove the hard drive bay cover.
- Remove screws from indicated areas (picture 2).
- ⓘ **place screws in a safe location or container (I use powerade bottle caps to separate screws from different parts of a project)**
- Use the tab (indicated in picture 3) to pull the hard drive to the side and lift it free.

Step 4



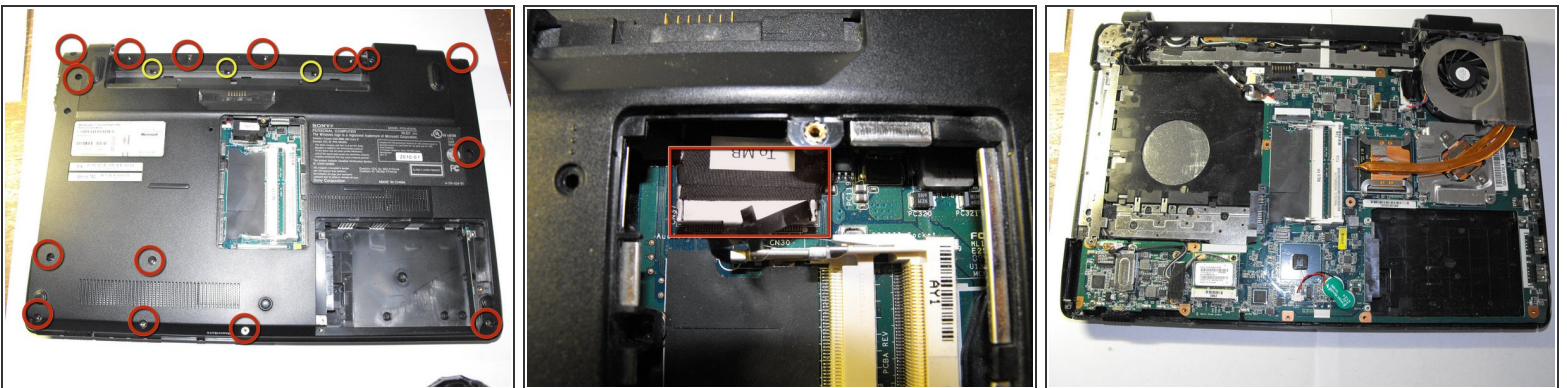
- Loosen the screw marked (indicated in the red circle) and pull the RAM bay cover free. (the cover has plastic tabs on the sides and may take a few tries to free it.)
- push the metal tabs on either side of the RAM chips, making them lean up slightly, and pull both chips free

Step 5



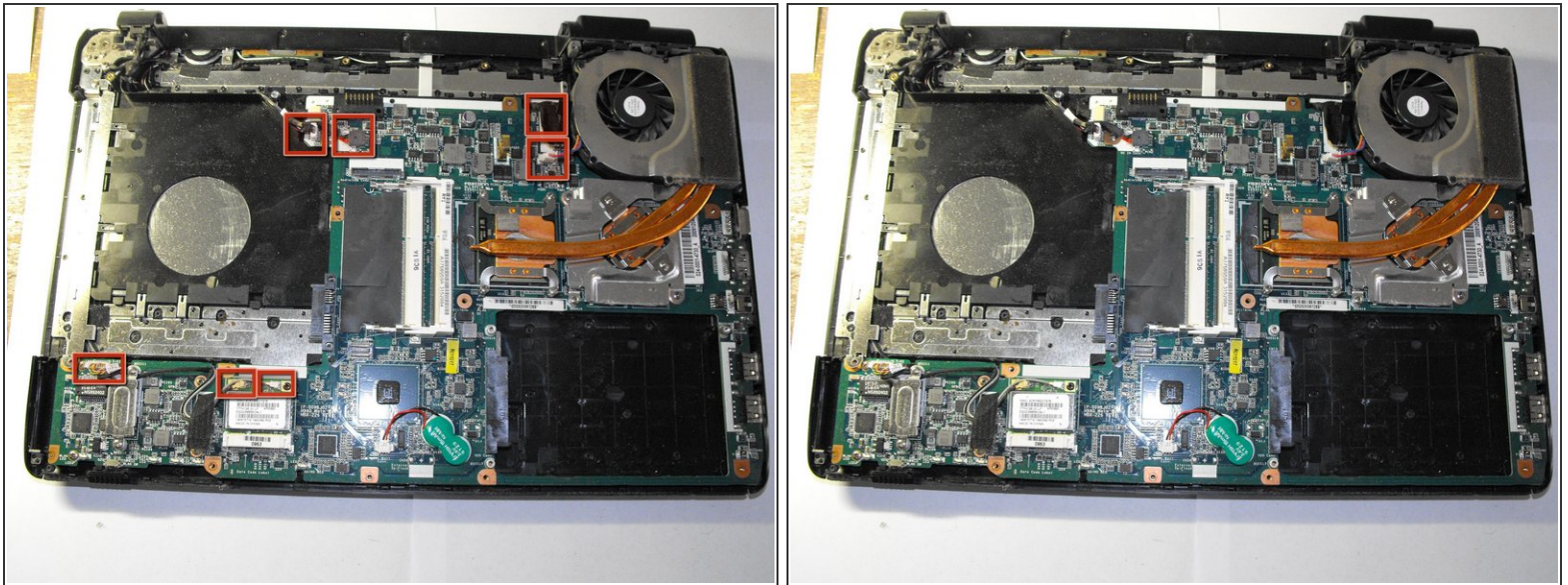
- Remove 2 screws (indicated in first picture).
- Pull CD drive from the laptop.

Step 6



- Remove the 15 screws indicated by red circles setting them aside in their own container
- Remove the 3 screws indicated by yellow circles setting them aside in their own container as well
- Pull up on tab in the RAM bay as indicated. (the black pull tab may detach, don't worry it will not affect performance)
- Gently begin to pull the bottom casing free

Step 7



- Begin unplugging cords from the motherboard in designated locations