



# BELLA TXG-DS14 Heating Plate Replacement

This is a replacement guide for the heating plate of BELLA TXG-DS14.

Written By: Norma Velarde



## INTRODUCTION

The heating plate under the basket could get dents or be damaged with usage. This could cause the basket to not fit as well and make it pop out. When that happens, the user should replace the heating plate with a new one. Thus this guide shows how to replace the plate.



### TOOLS:

- [Phillips #1 Screwdriver](#) (1)
  - [Flathead 3/32" or 2.5 mm Screwdriver](#) (1)
-

## Step 1 — Heating Plate



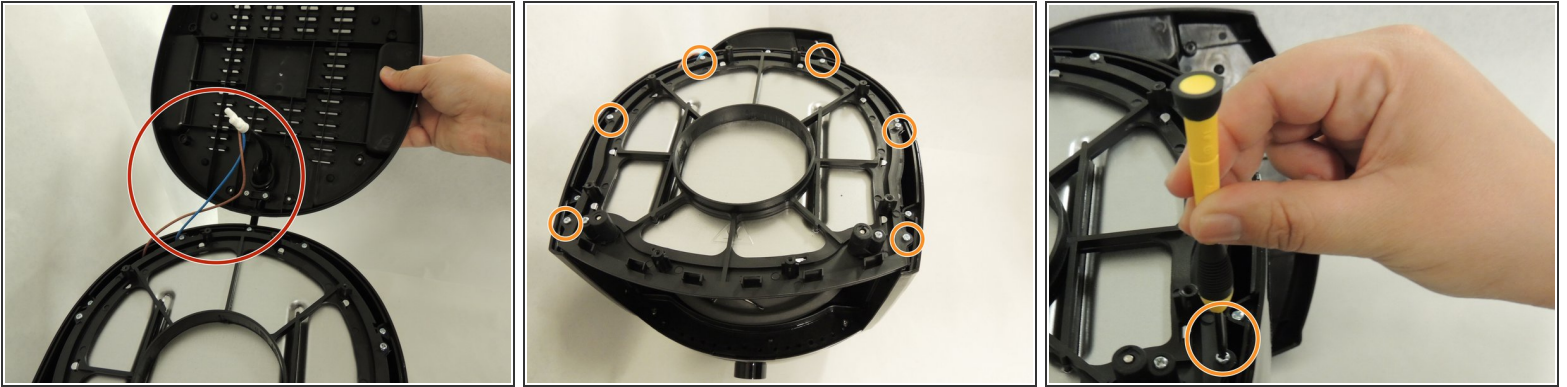
- Turn the device off and make sure it is cooled down. Then place the device in front of you and take the drawer out by placing a hand on the handle and pull towards you. Make sure the plug is out of the way before starting any of the following steps.
- Slide the clear lock away from the button and press down on the release button to release the basket from the drawer.


## Step 2



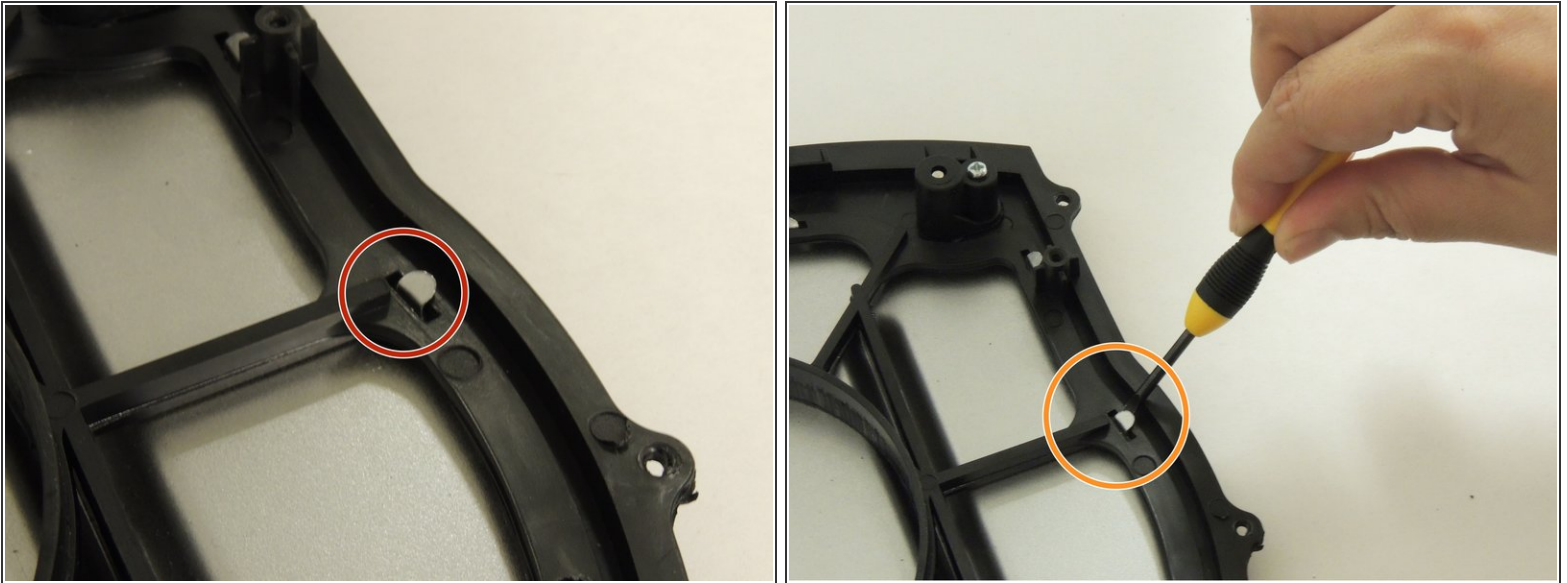
- Turn the device onto its side and have the bottom surface face you.
- Remove the 1.5 mm Phillips #1 screws from the bottom of the device. Rotate the screws counterclockwise with a Phillip's #1 screwdriver.
- ⓘ There should be 8 screws removed by the end of this step
- ⚠ Make sure to keep the screws in a safe spot

## Step 3



- Place the unscrewed bottom cover next to the device without damaging the cords by extending them.
  - Unscrew all the 1.2mm Phillip's #1 screw around the silver plate by rotating them counterclockwise with Phillip's #1 screwdriver to take the plate off.
-  There should be 6 screws removed by the end of this device

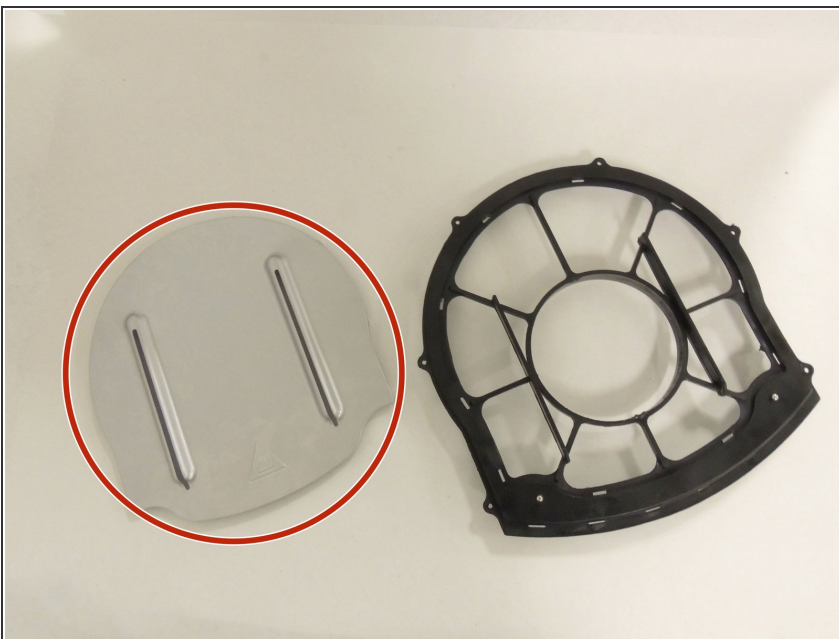
## Step 4



- Locate 8 silver holds that holds the silver plate and black cover together.
- Use a 0.1mm Flathead screwdriver to bend the 8 silver folds toward the center of the circle to release the silver plate.

⚠ Be careful to not cut yourself on the sharp edges of the silver folds.

## Step 5



- Remove the silver heating plate and install the new one.
- ⓘ Fold the silver edges back into place and put the screws back in. For further reassembly, follow this guide in reverse order.
- ⚠ When installing the new silver heating plate, make sure to not over bend the silver edges as they can easily break.

To reassemble your device, follow these instructions in reverse order.