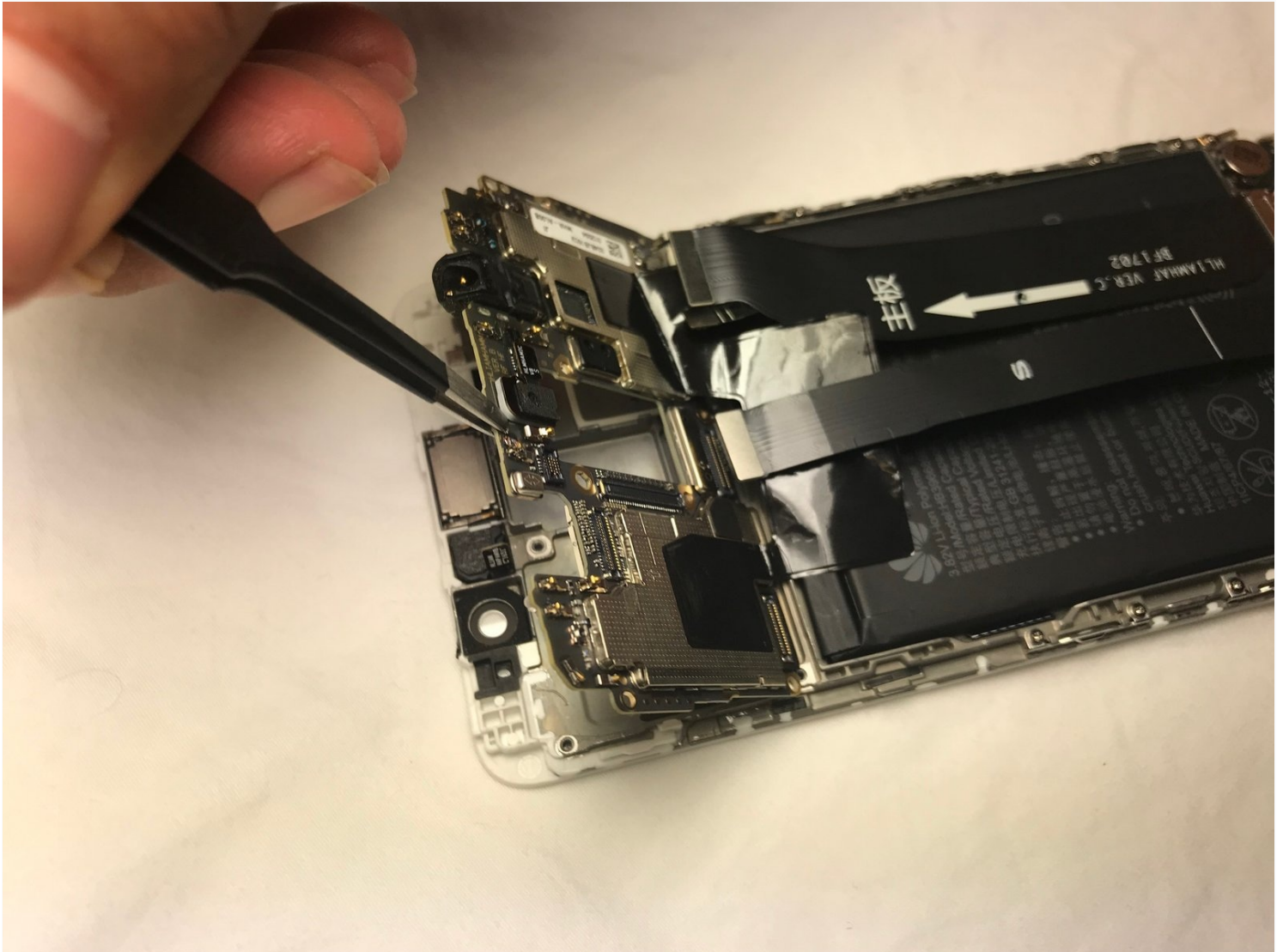




Huawei Mate 9 Motherboard Replacement

Use this guide to help you replace a broken or...

Written By: Rogelio Ramirez



INTRODUCTION

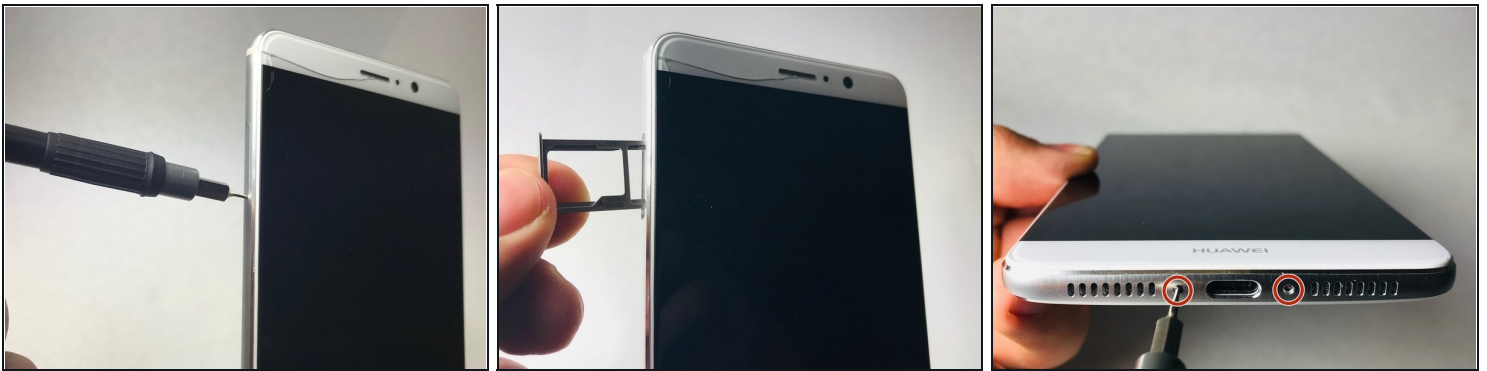
Use this guide to help you replace a broken or malfunctioning motherboard from your Huawei Mate 9 phone.

Before beginning the repair, be sure to power off the device and unplug from the power cord.

TOOLS:

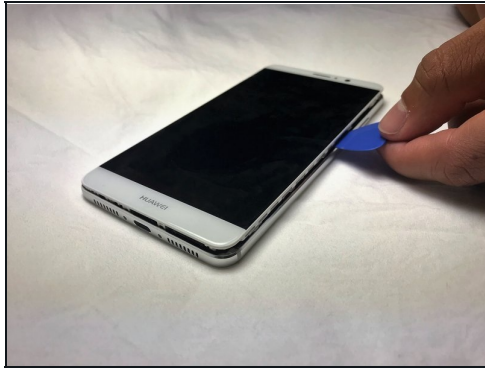
[SIM Card Eject Tool](#) (1)
[T2 Torx Screwdriver](#) (1)
[Suction Handle](#) (1)
[iFixit Opening Tool](#) (1)
[Phillips #000 Screwdriver](#) (1)
[Tweezers](#) (1)
[Spudger](#) (1)

Step 1 — Motherboard



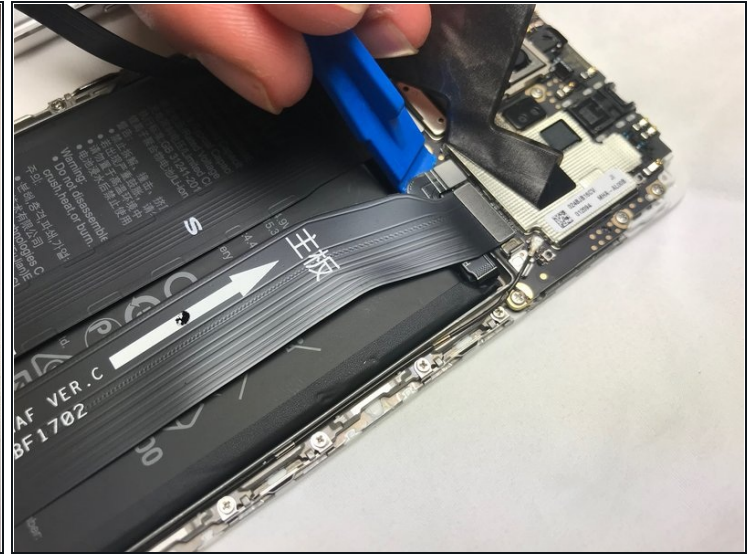
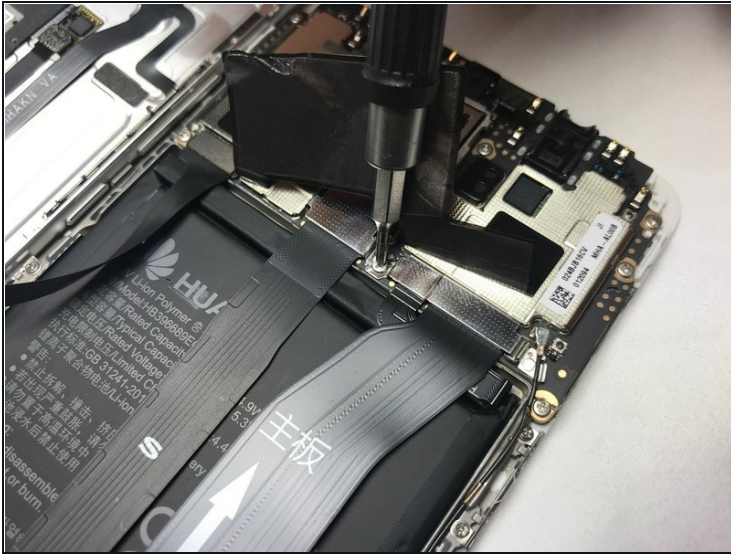
- Turn off your Huawei Mate 9 smartphone.
- Remove the SIM card tray with a SIM card removal tool.
- Remove the two T2 screws at the base of the phone next to the USB Type- C port with a T2 Torx Screwdriver.

Step 2



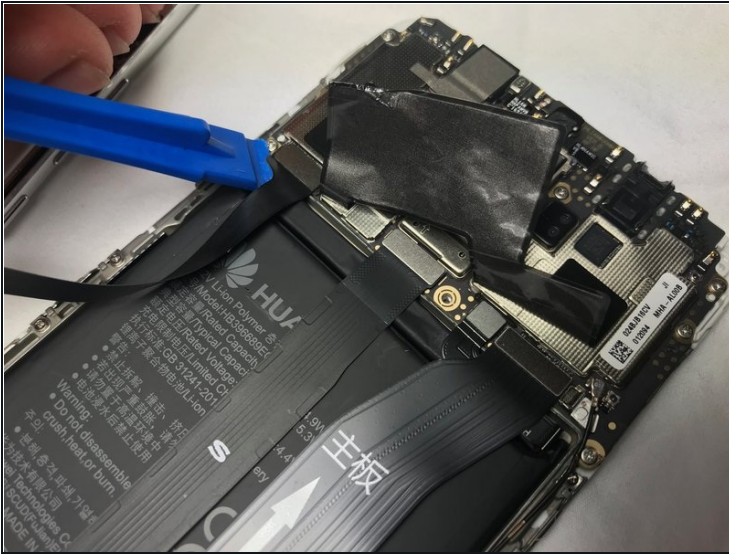
- Using a suction cup, carefully start pulling the display assembly from the back cover.
- Insert a pick when pulling the display assembly off the back cover, while sliding the pick along the edge of the phone to loosen the display assembly.
- While removing the display assembly, make sure to not completely remove the back cover. This is due to the power button and fingerprint sensor cables still being connected to the motherboard.

Step 3



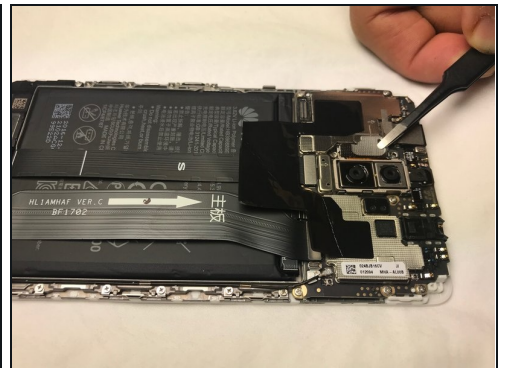
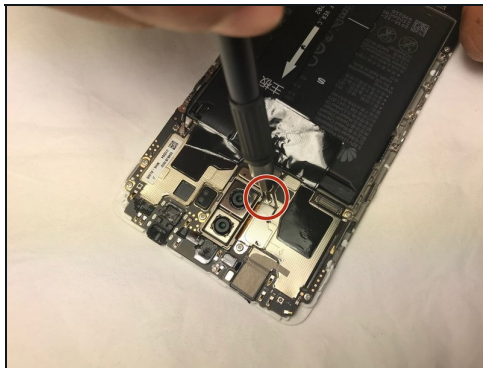
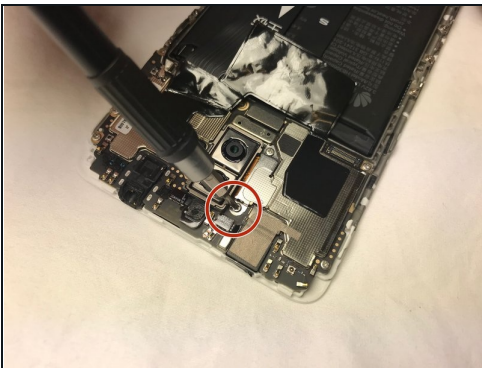
- To protect the internal cables and components, you will need to carefully disconnect the battery connector.
- Use a Phillips #000 screwdriver to remove the 1.3 mm screws securing the metal plate.
- Remove the metal plate with [tweezers](#).
- Disconnect the battery connector from the motherboard using the spudger.

Step 4



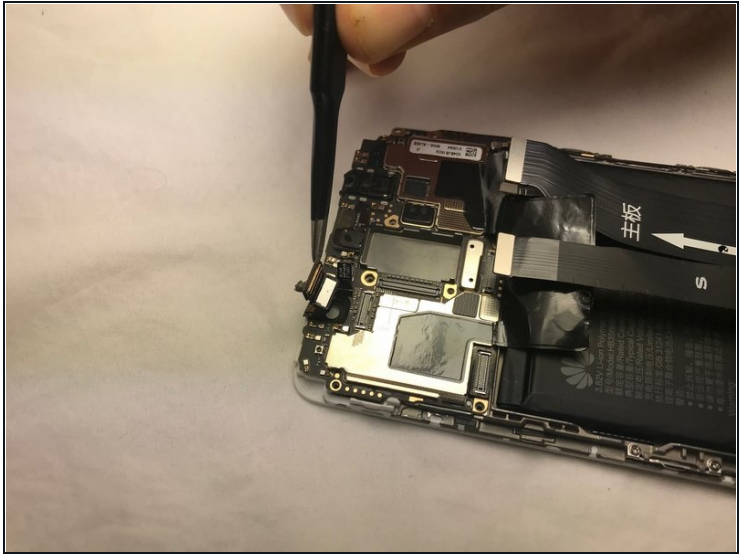
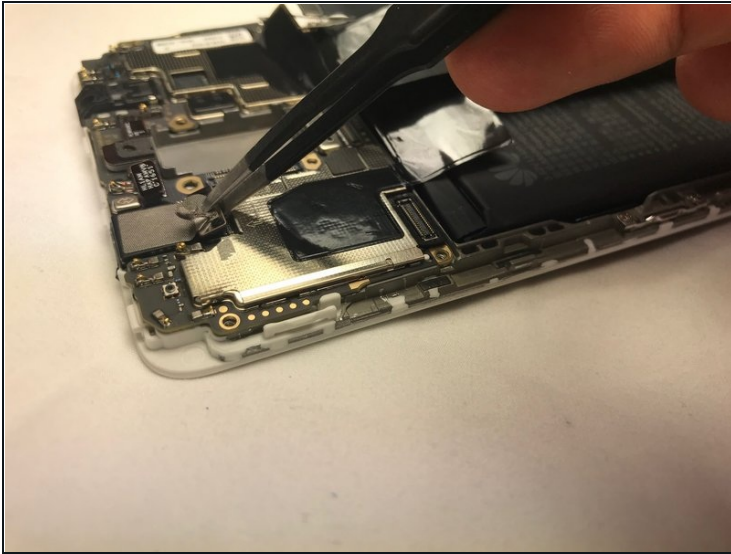
- Using a spudger, disconnect the battery connector.
- Remove the back cover.

Step 5



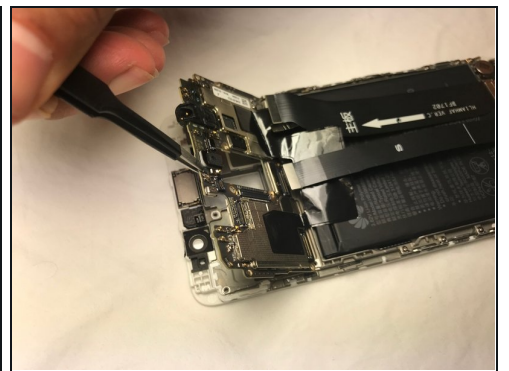
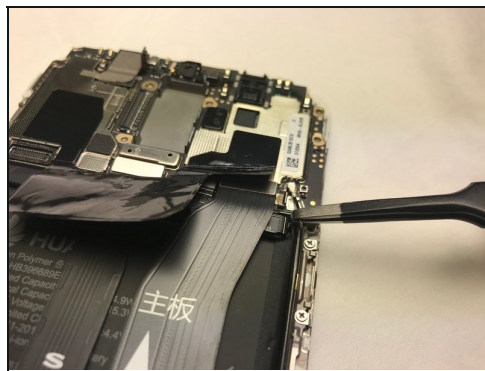
- Use a Phillips #000 screwdriver to remove the two 1.0 mm screws securing the metal plate.
- Remove the metal plate with tweezers.
- After removing the metal plate, you can now remove the rear camera from its slot.

Step 6



- To remove the front-facing camera, peel off the conducting fabric from the metal shield on the display assembly.
- Disconnect the front camera connector and remove the front-facing camera.

Step 7



- Use a Phillips #000 to remove the six 1.0 mm screws securing the motherboard.
- Use a spudger to disconnect the coaxial antenna cables.
- Disconnect the remaining cables using a spudger.
- Remove the motherboard completely.

To reassemble your device, follow these instructions in reverse order.