



LG Intuition Power Button Replacement

This guide will replace the power button in your LG Intuition.

Written By: Thomas Morrissey



INTRODUCTION

If your power button is not responding to pressing or is not turning on the device, use this guide to replace your power button.

TOOLS:

- [Phillips #0 Screwdriver](#) (1)
 - [Phillips #00 Screwdriver](#) (1)
 - [iFixit Opening Tools](#) (1)
-

Step 1 — Battery



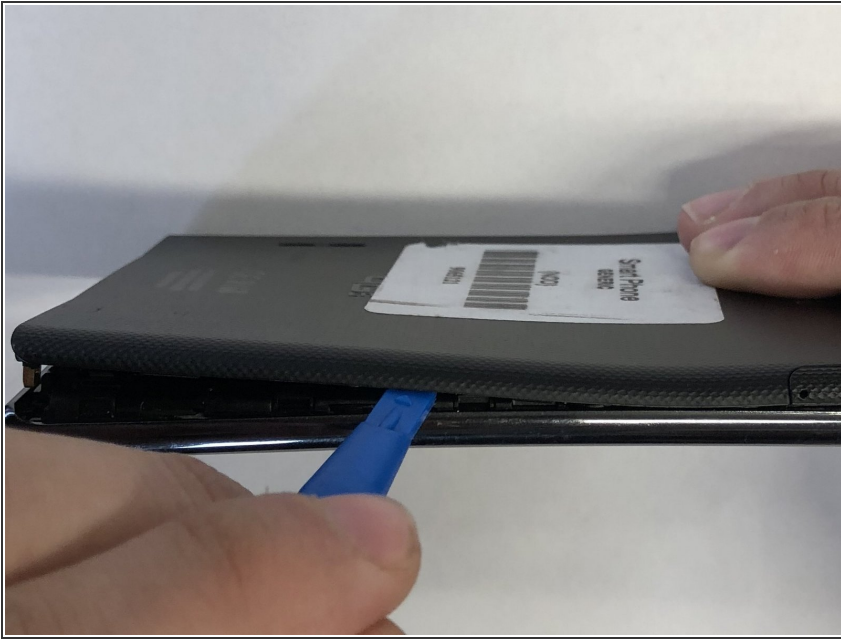
- Turn the device so the two bottom screws are shown.

Step 2



- Remove the two 7mm screws holding the back panel of the phone using the P5 bit and magnetic driver.

Step 3



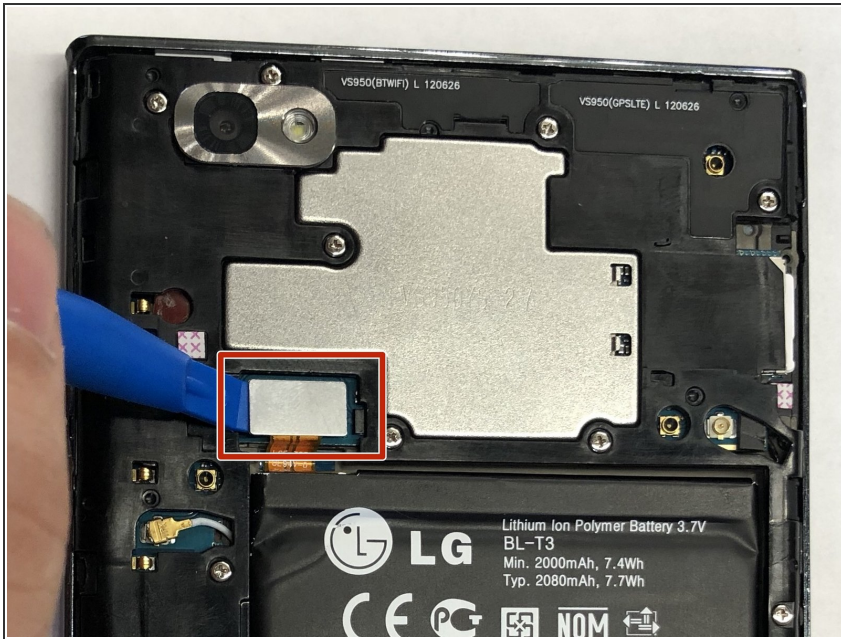
- Carefully use the plastic opening tool to pry the back panel of the phone from the front screen. This will expose the battery and other parts.

Step 4



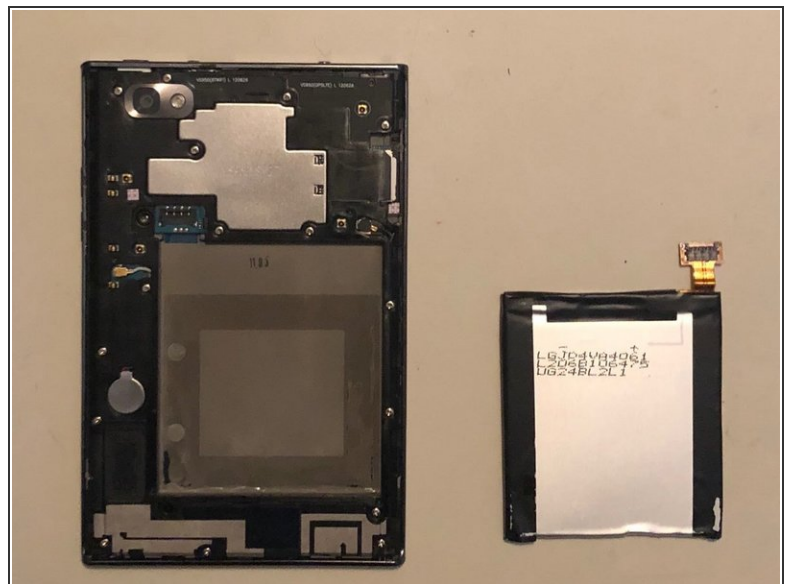
- Use the Phillips #0 screwdriver to remove the 5mm screw holding the metal bracket that protects the battery's ribbon cable.

Step 5



- Carefully use the plastic opening tool to pry the ribbon cable connecting the battery to the motherboard of the phone.

Step 6



- Gently raise the battery from its compartment.

Step 7 — Plastic Motherboard Shield



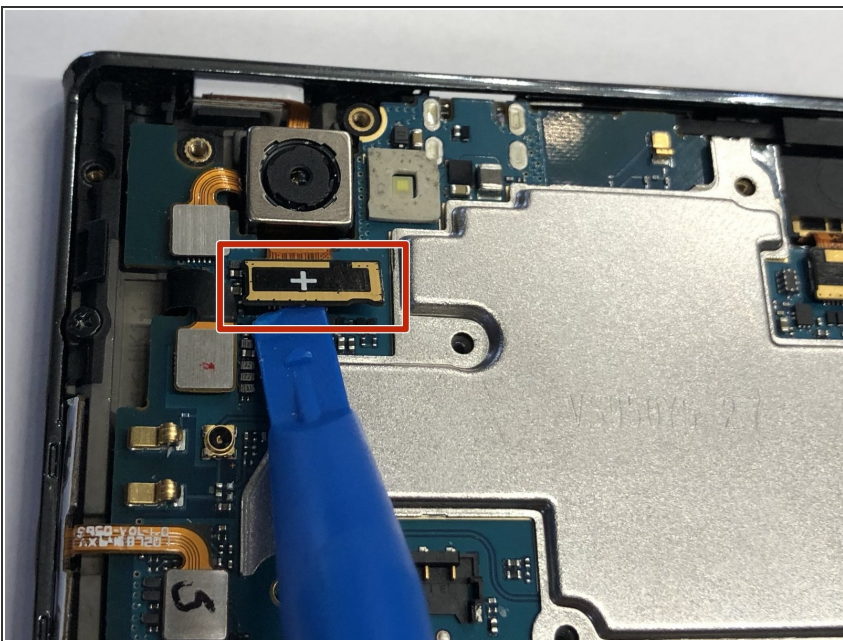
- Remove the thirteen 5mm screws holding the plastic shield covering the motherboard using the Phillips #00 screwdriver.

Step 8



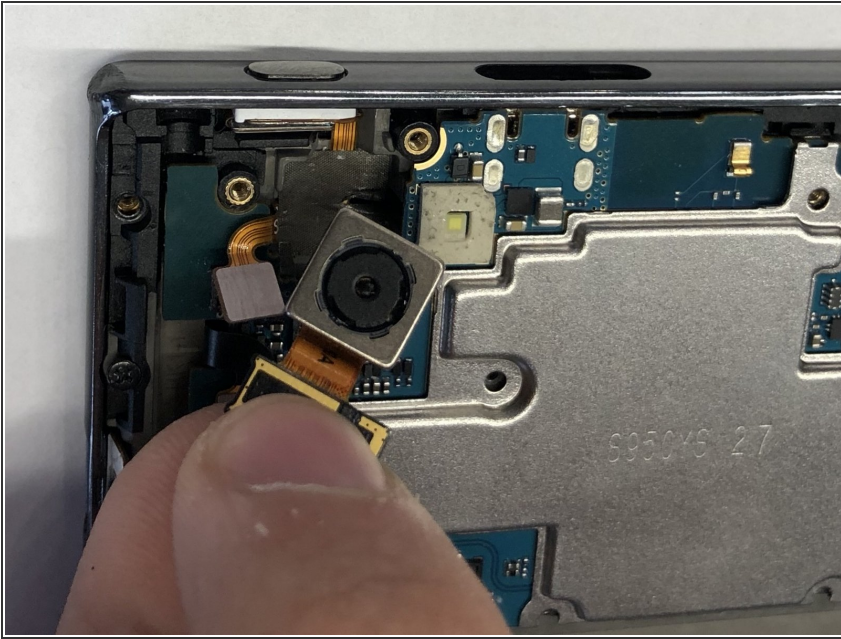
- Carefully use the plastic opening tool to pry the plastic shield from the motherboard. This will expose the motherboard and ribbon cables for each component.

Step 9 — Camera



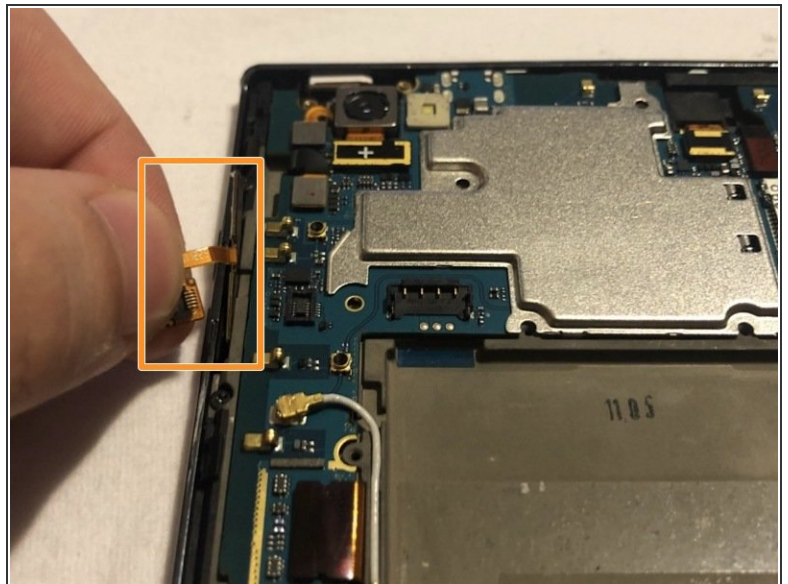
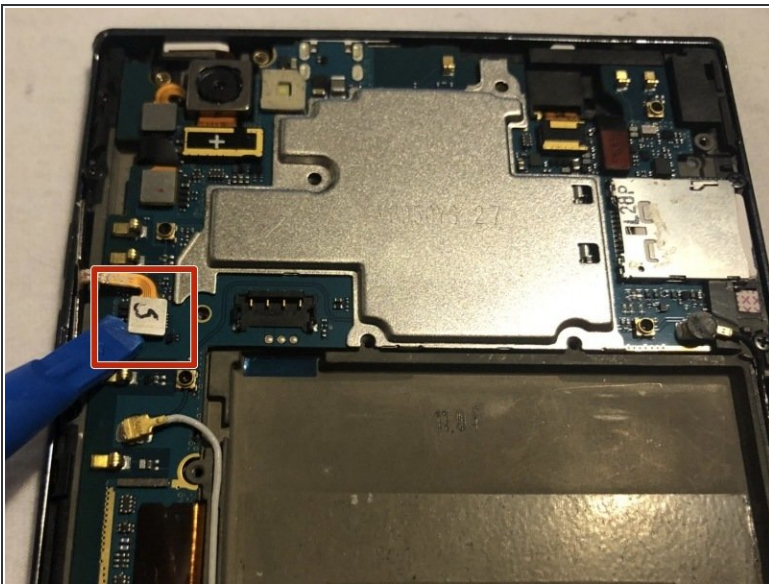
- Carefully use the plastic opening tool to pry the ribbon cable below the camera itself from the motherboard.

Step 10



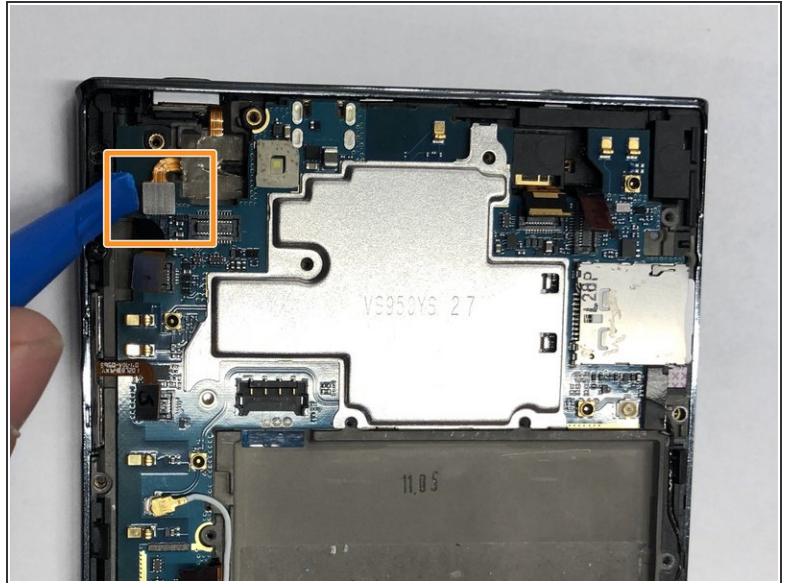
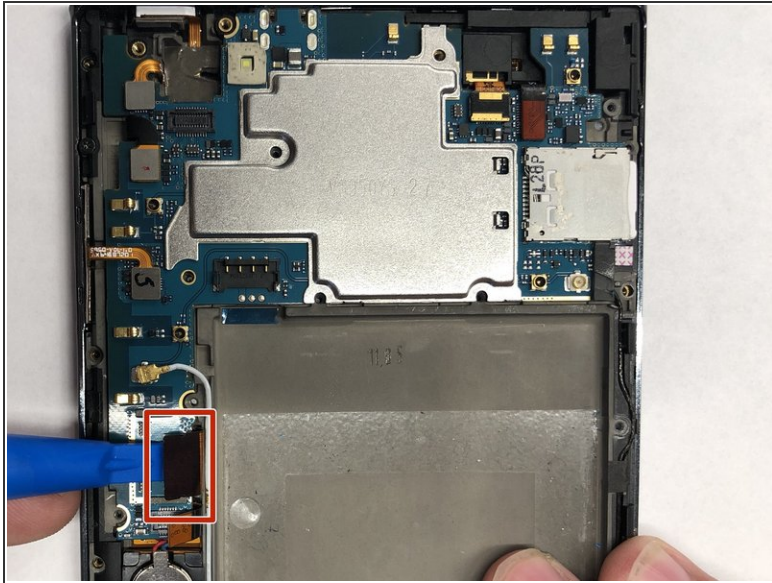
- Using the ribbon beneath the camera lift it upwards and pull the camera out.

Step 11 — Volume Buttons



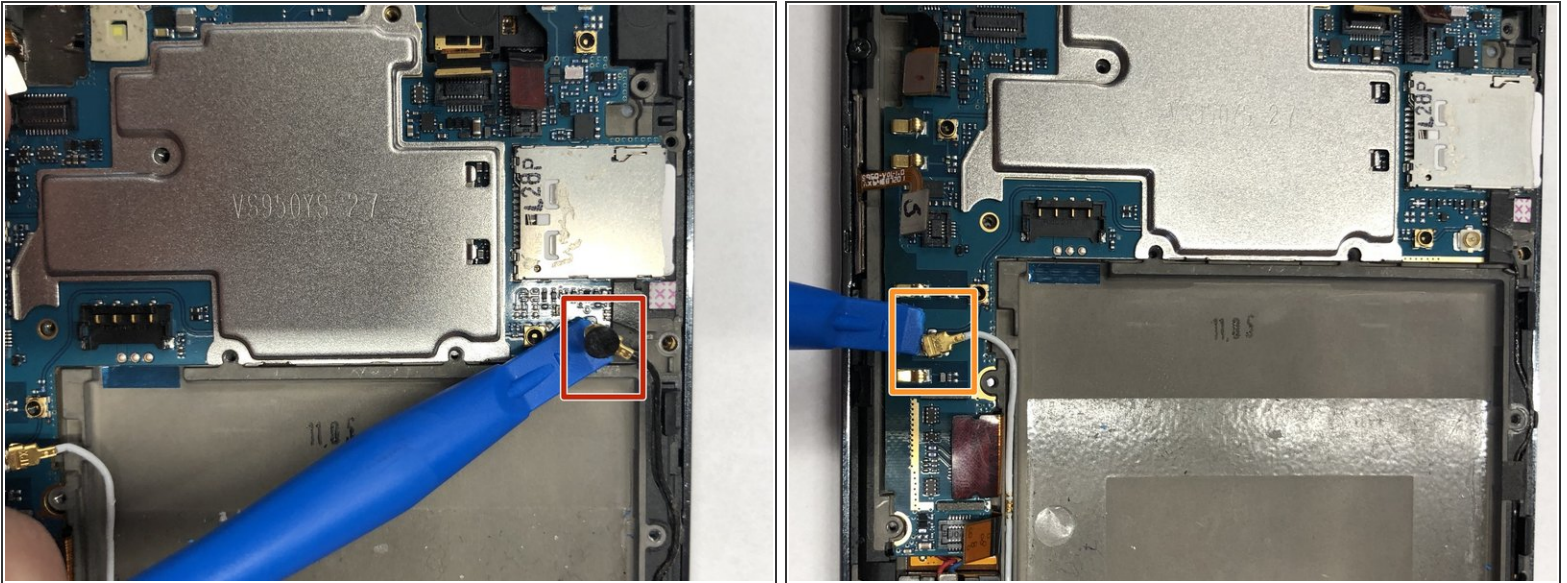
- Carefully use the plastic opening tool to pry the ribbon cable connecting the battery to the motherboard of the phone.
- Slowly pull the ribbon cable upward releasing the volume buttons from the phone.

Step 12 — Screen Protector



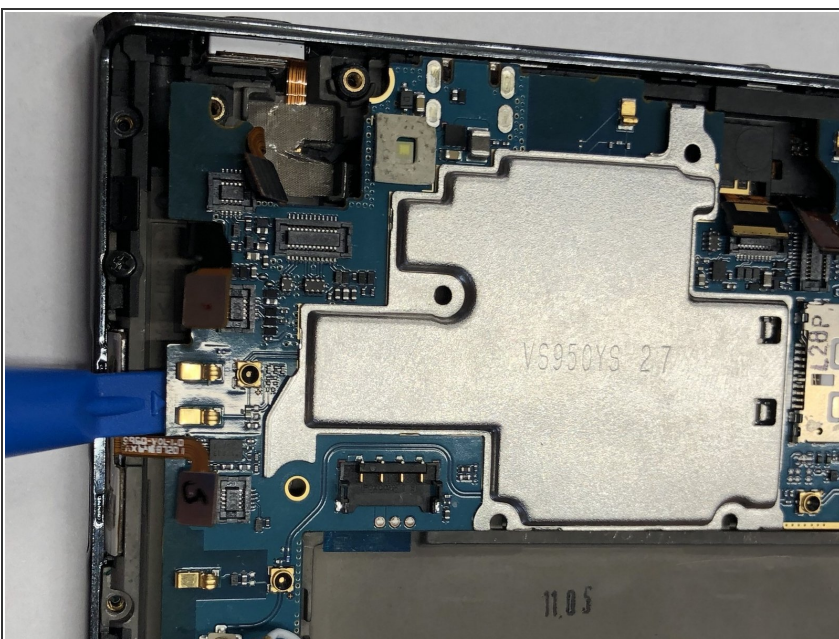
- Carefully use the plastic opening tool to pry the ribbon cable below the volume buttons on the left side of the phone.
- Carefully use the plastic opening tool to pry the ribbon cable to the left of the camera.

Step 13



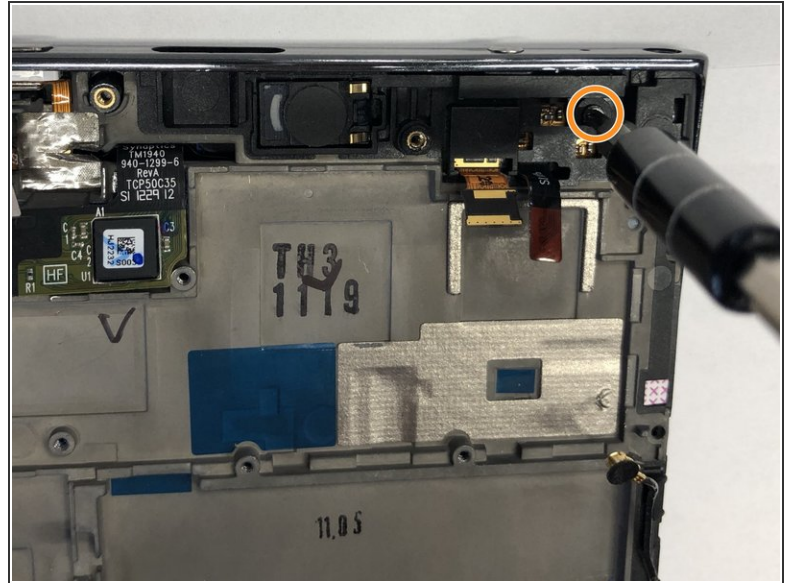
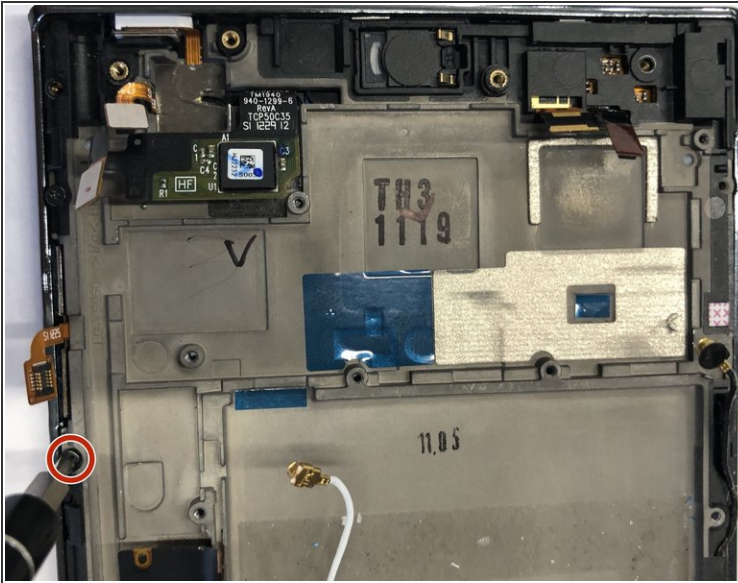
- Carefully use the plastic opening tool to pry the wire that connects to the bottom home and back display buttons.
- Carefully use the plastic opening tool to pry the second wire on the right side of the battery that also connects to the bottom home and back display buttons.

Step 14



- Carefully use the plastic opening tool to pry the motherboard from the front screen.

Step 15



- Remove the 5mm Phillips #00 screw below the volume buttons holding the plastic shield onto the screen display.
- Remove the 5mm Phillips #00 screw on the top right of the phone.

Step 16



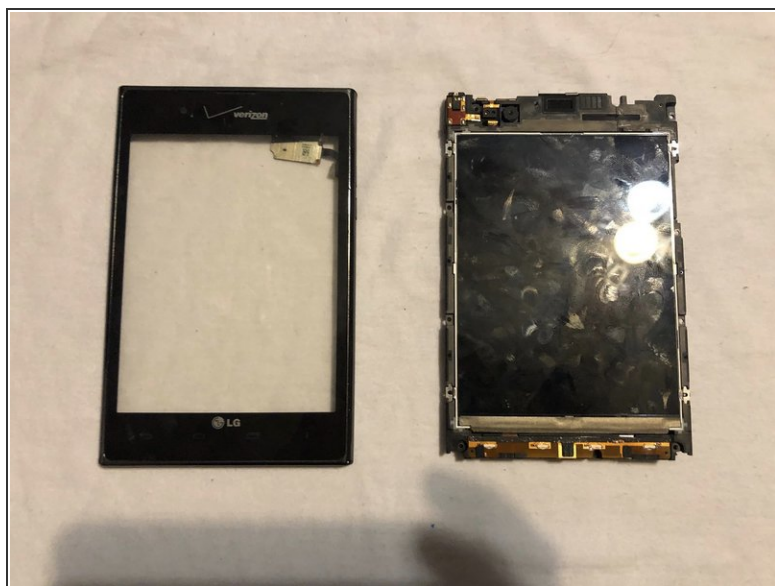
- Carefully pull the ribbon cable upward and away from the front screen display.

Step 17



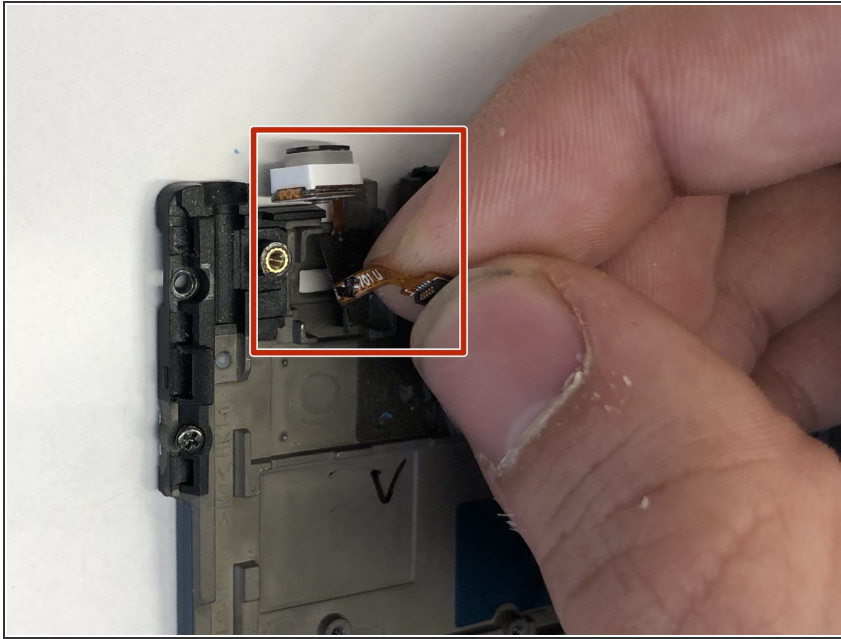
- Carefully use the plastic opening tool to pry the screen protector from the display and motherboard.

Step 18



- Slowly separate the front screen from the screen protector. This will remove the screen protector from the phone.

Step 19 — Power Button



- Slowly separate the power button from the screen display. This will release the power button.

To reassemble your device, follow these instructions in reverse order.