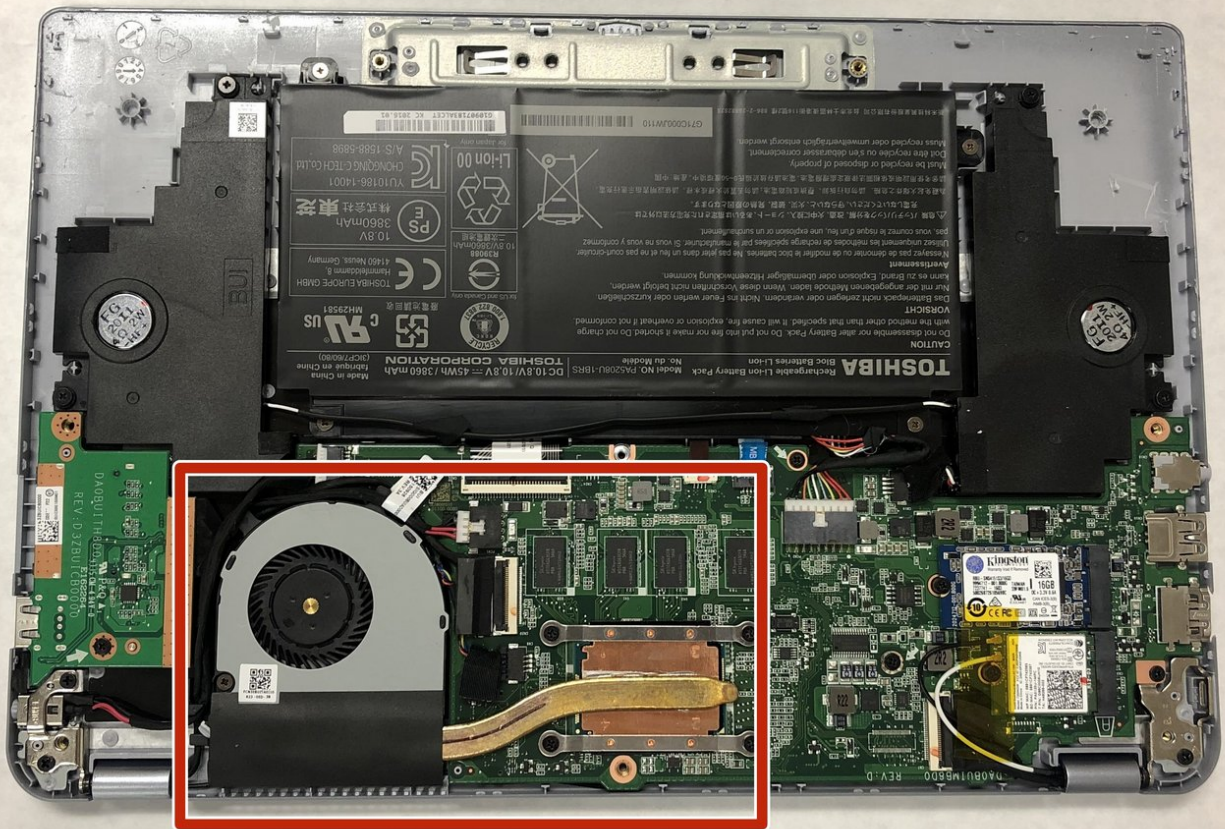




# Toshiba CB35-C3300 Heat Sink Replacement

This replacement will show you how to safely replace your heat sink.

Written By: Gabriel Bryan



---

## INTRODUCTION

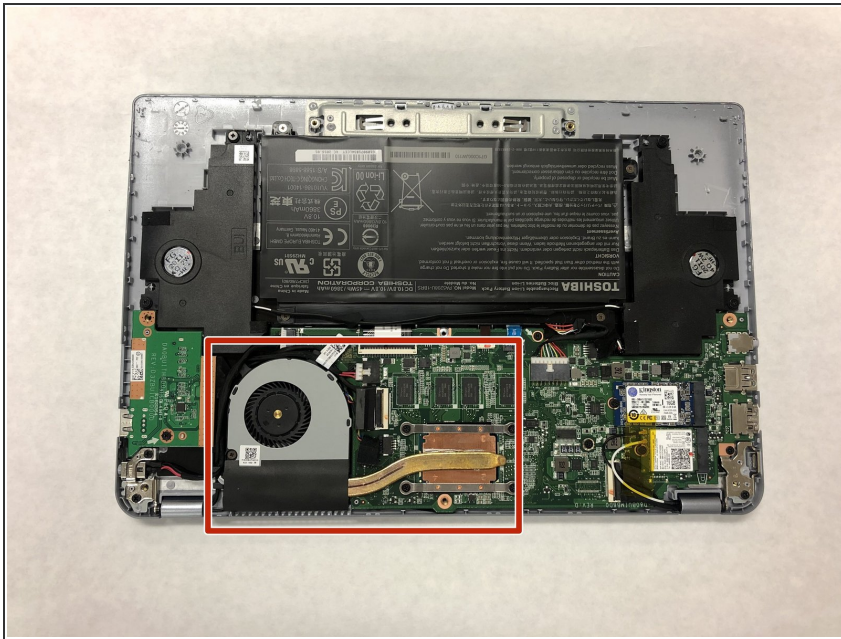
This guide will show you how to correctly replace your heat sink. This is a fairly straight forward replacement and does not require advanced knowledge or training.



### TOOLS:

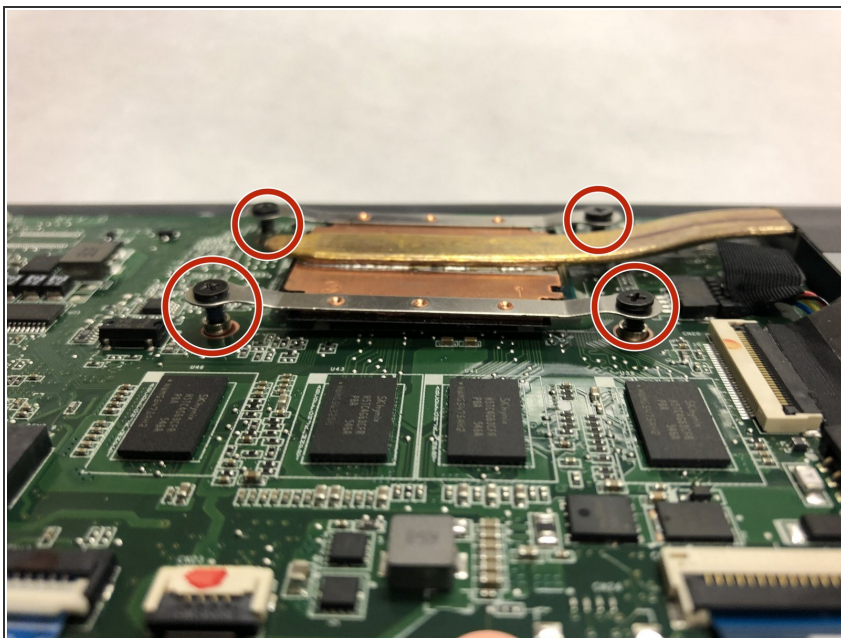
- [Essential Electronics Toolkit](#) (1)
-

## Step 1 — Heat Sink



- Remove the back cover of the Chromebook and locate the Heat sink and connected fan.

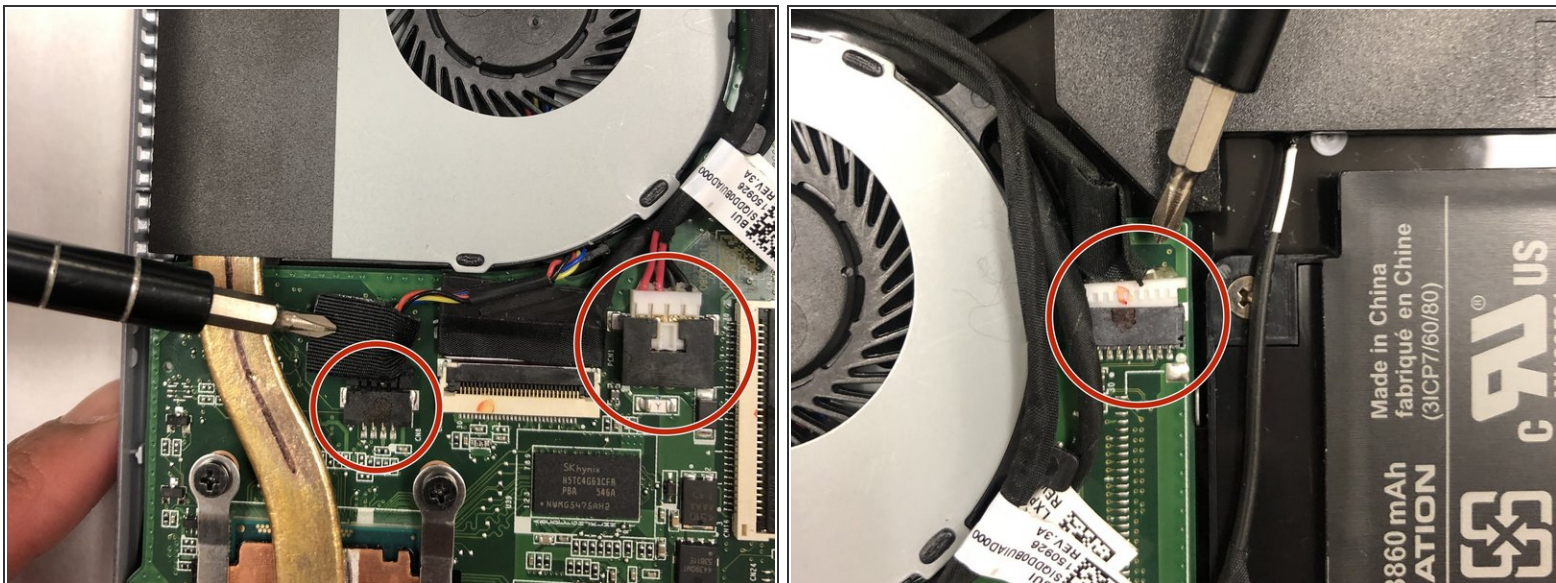
## Step 2



- Unscrew the 4 screws connecting the Heat Sink to the motherboard.

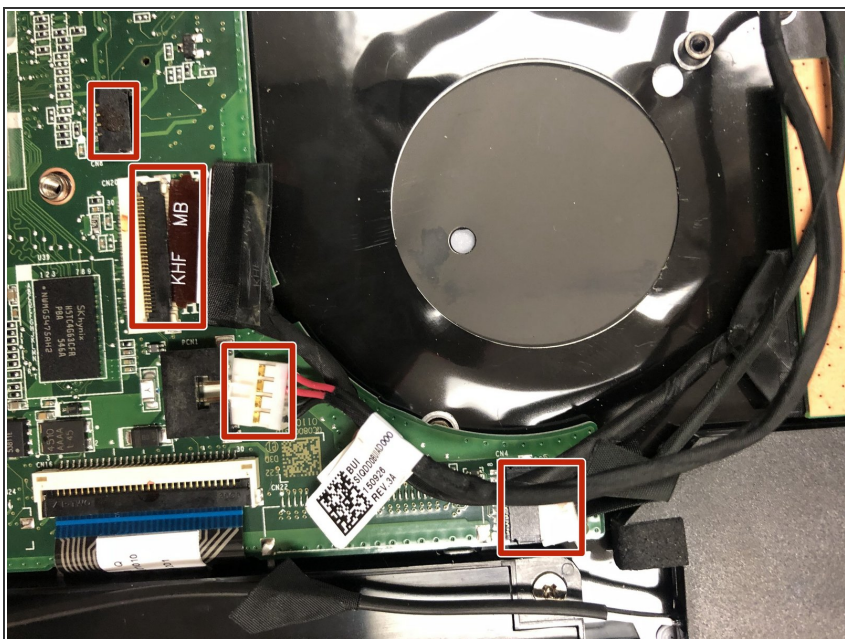


### Step 3



- Unplug the three primary wires attached to the fan from the motherboard.

### Step 4



- Ensure that all cables are detached.

## Step 5



- Carefully remove the Heat sink and fan and set aside.

To reassemble your device, follow these instructions in reverse order.