



# BLU Grand M2 Rear Camera Replacement

A guide on how to replace the rear-facing camera for the BLU Grand M2.

Written By: Alan Rodriguez



## INTRODUCTION

This guide will help you replace the rear-facing camera on the back panel of the BLU Grand M2. It is a five-step process and can be completed in as little as six minutes.

The process is of a moderate difficulty and requires five tools for completion.



### TOOLS:

- [T2 Torx Screwdriver](#) (1)
  - [Tweezers](#) (1)
  - [Phillips #000 Screwdriver](#) (1)
  - [Spudger](#) (1)
  - [iFixit Opening Tools](#) (1)
-

## Step 1 — Confirm the Device



- Check the front panel and confirm you are repairing the BLU Grand M2 (figure 1)
- Turn the device over and identify the the rear-facing camera (figure 2) This is what you will be replacing

## Step 2



- Locate the two torx screws at the bottom of the phone and remove them using the T2 Torx Screwdriver.



### Step 3



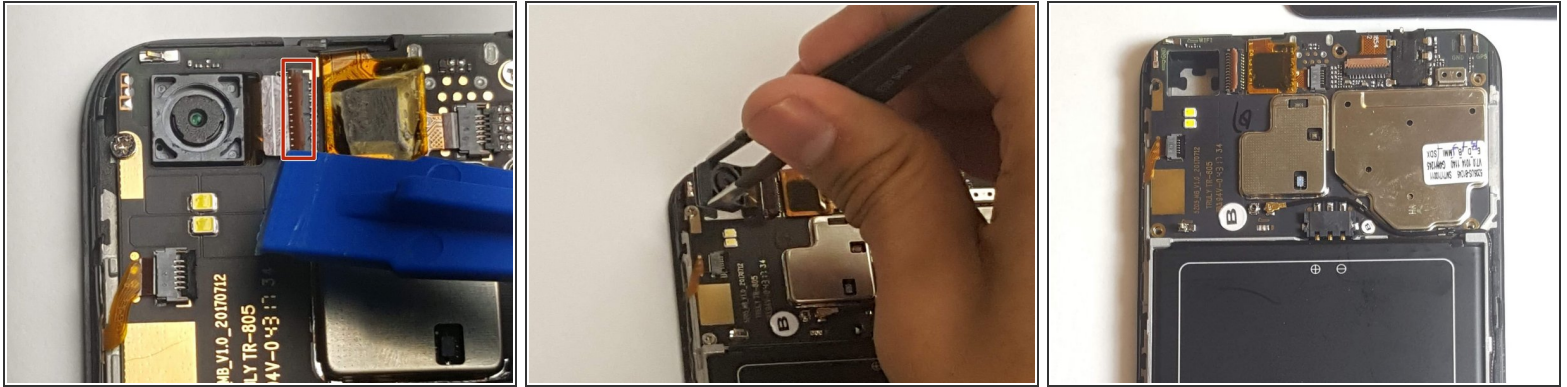
- Use the suction and pry tools to carefully remove the black plate.
- ⚠ Be cautious!! Do not damage the phone display or inside components while using pry and suction tools.

### Step 4



- Identify the back-panel camera in the left -hand corner of the open device. (Figure 1)

## Step 5



- Use the Plastic Pry Tool to carefully to lift the tab on the right-hand side of the connector.
- Carefully remove camera from housing using a pair of tweezers.

To reassemble your device, follow these instructions in reverse order.