



Blu Grand M2 Power Button Replacement

A Guide on how to replace the power button on a BLU Grand M2.

Written By: Alan Rodriguez



INTRODUCTION

If your BLU Grand M2 phone is not responding when you are pressing the power button, you may need a power button replacement. This guide has been made to help you install your power button on your own. It will show you how to remove the screws, remove the back panel, and detach the power button.



TOOLS:

- [iFixit Opening Tool](#) (1)
- [iFixit Opening Picks \(Set of 6\)](#) (1)
- [T2 Torx Screwdriver](#) (1)



PARTS:

- [BLU Grand M2 Power Button](#) (1)

Step 1 — Power Button



- Using a T2 Torx Screwdriver, remove the two screws from the bottom edge of the phone.

Step 2



- Apply the suction tool to the back panel near the bottom edge.
- Carefully slide the device pick between the back panel and bottom edge.
- Insert the opening tool into the gap created by the device pick.
- While holding the suction tool, use the opening tool to gently pry the back panel off.

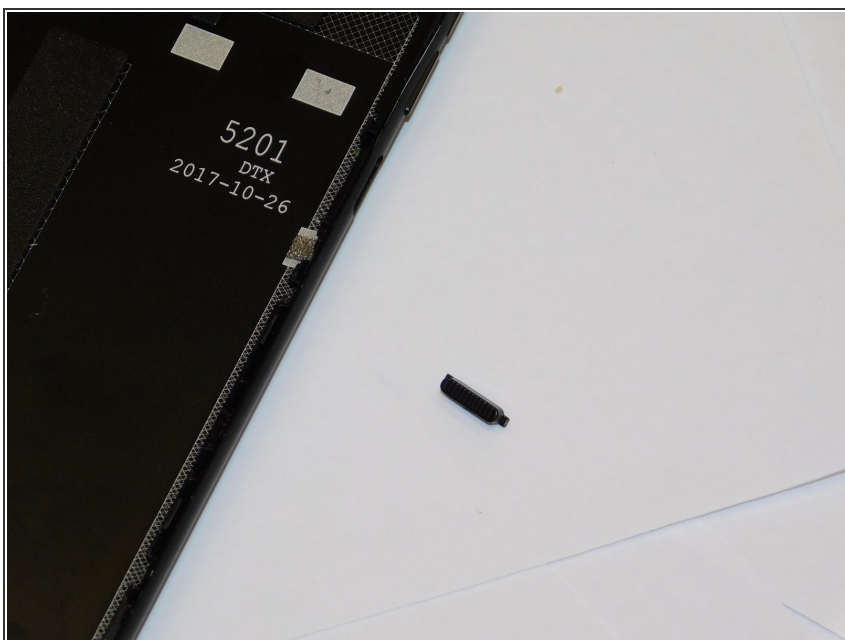
⚠ Be Cautious to not damage the phone display and or the inside components while using the pry tool and suction tool.

Step 3



- Take the end of the opening tool and push the old power button out of its socket.
- Remove the old power button.

Step 4



- Place the new BLU Grand M2 power button in the socket.

To reassemble your device, follow these instructions in reverse order.