



Google Pixel 2 Midframe Replacement

Prerequisite-only guide to remove the midframe in a Google Pixel 2.

Written By: Adam O'Camb



INTRODUCTION

Prerequisite-only guide to remove the midframe in a Google Pixel 2.



TOOLS:

- [Essential Electronics Toolkit](#) (1)
 - [iOpener](#) (1)
-

Step 1 — Midframe



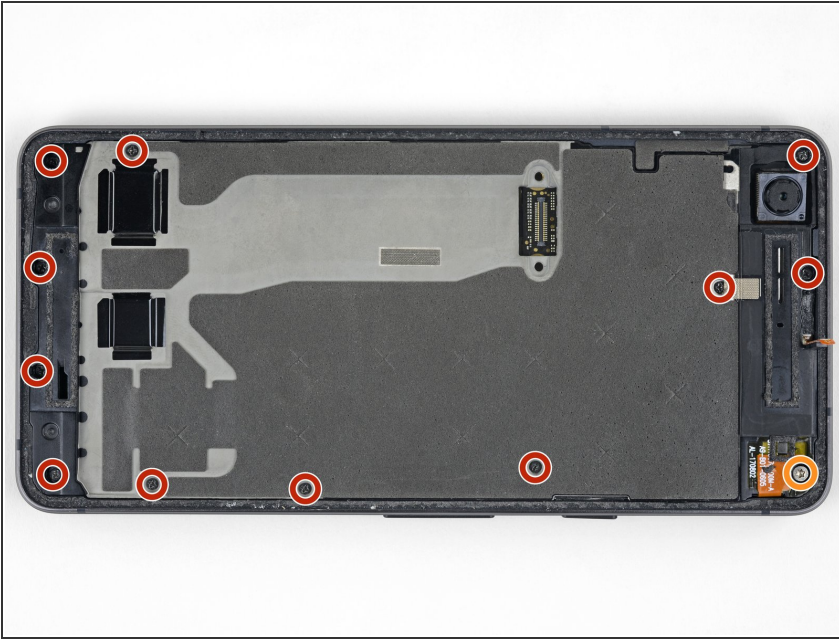
- Apply a [heated iOpener](#) to the proximity sensor on the top edge of the midframe for two minutes to soften its adhesive.

Step 2



- Slide the point of a spudger under the proximity sensor cable, starting from the side closest to the front-facing camera.
- Gently lift the edge of the sensor cable until the sensor is perpendicular to the midframe.

Step 3



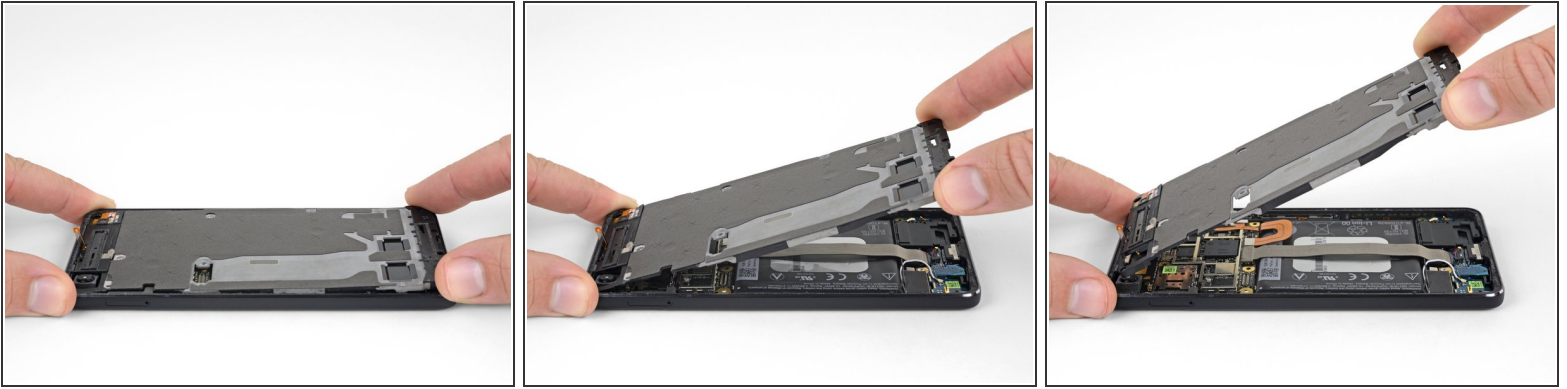
- Peel back the small piece of [tape](#) covering the screw below the earpiece speaker. Peel back any tape covering other screws as well.
- Remove the following screws securing the midframe:
 - Eleven 3.7 mm Phillips screws
 - One 4 mm T5 Torx screw
- ☑ Throughout this repair, [keep track of each screw](#) and make sure it goes back exactly where it came from.

Step 4



- Insert an opening tool into the notch in the midframe near the hold button.
- Pry the midframe up enough to create a gap between it and the phone case. The midframe cannot yet be completely removed.

Step 5



- Lift the midframe up starting from the bottom edge.
- When the midframe starts to make about a 45° with the rest of the phone, lift the midframe straight up and away from the phone.
- As you lift the midframe, carefully guide the proximity sensor through the small [slot](#) in the midframe.

To reassemble your device, follow these instructions in reverse order.