



AngelEye WST-AE630 Disassembly

Disassembling the AngelEye Smoke Detector.

Written By: contact@kbl.netlib.re



INTRODUCTION

This device was supposed to run during 10 years. It stopped working after 4.

<http://www.angeleye.fr/produit/elegance-...>



TOOLS:

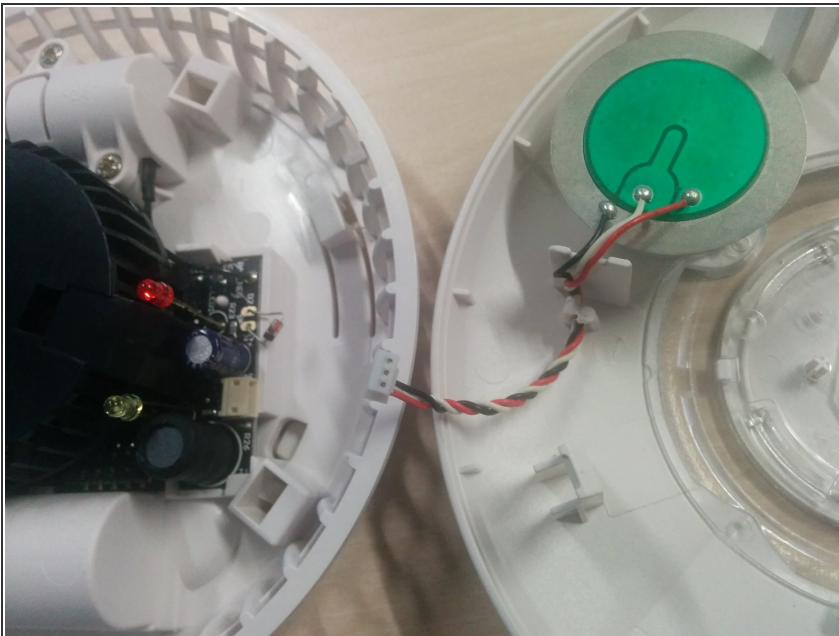
- [Flathead Screwdriver](#) (1)
-

Step 1 — Remove the Battery Module



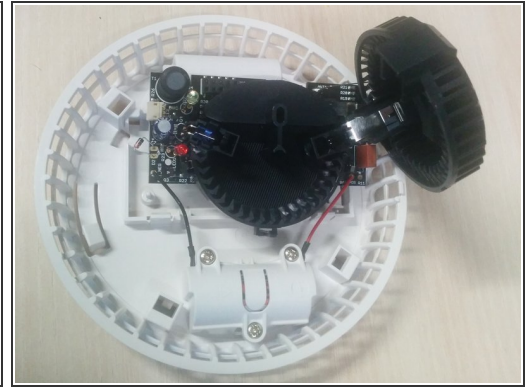
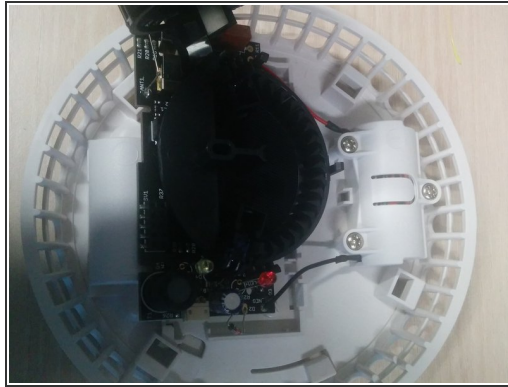
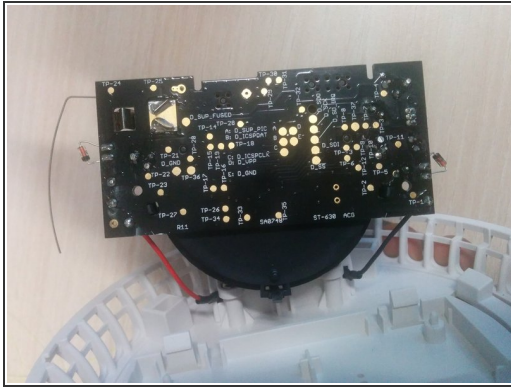
- Insert wisdom here.

Step 2 — Disconnect the buzzer



- Insert wisdom here.

Step 3 — Look Inside



- Insert wisdom here.

To reassemble your device, follow these instructions in reverse order.