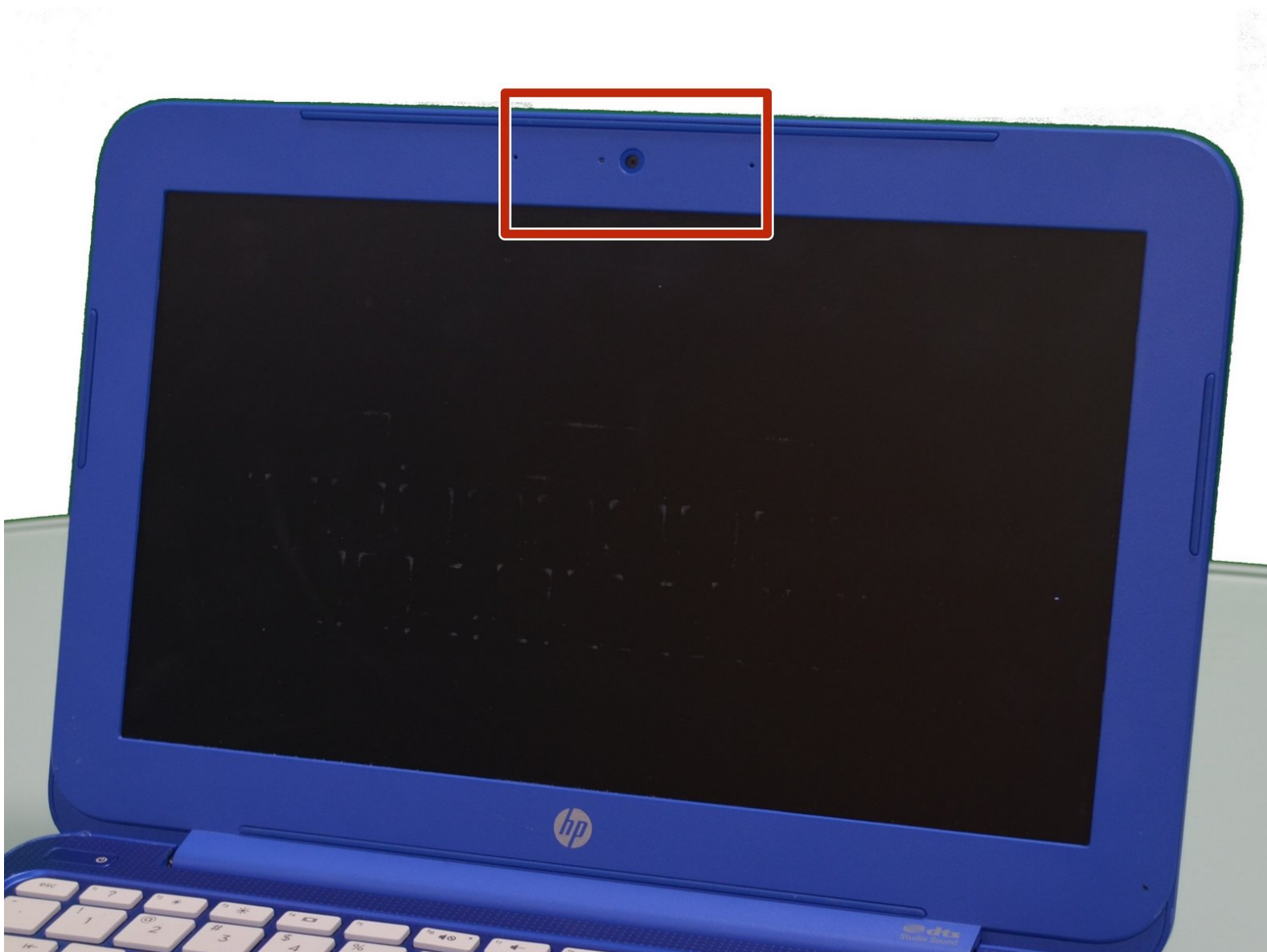




HP Stream 11-d010nr Webcam Replacement

Learn how to replace a faulty or damaged webcam in an HP Stream 11-d010nr laptop.

Written By: Zachary Heisler



INTRODUCTION

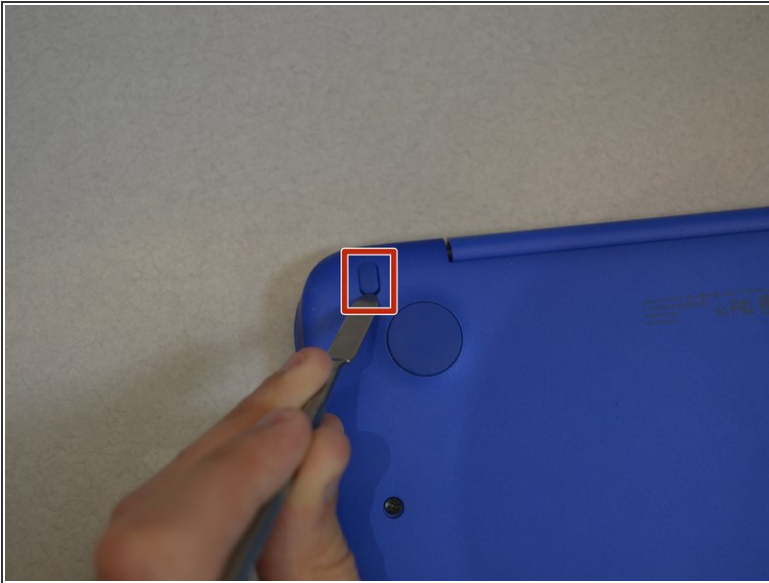
If the webcam in you HP Stream 11-d010nr is showing signs of being faulty or damaged, such as not displaying video, it may need to be replaced. This guide will show you the steps necessary to do so.




TOOLS:

- [Phillips #000 Screwdriver](#) (1)
 - [JIS #1](#) (1)
 - [Tweezers](#) (1)
 - [iFixit Opening Tools](#) (1)
 - [Metal Spudger](#) (1)
-

Step 1 — Keyboard



 Unplug and turn off the HP Stream 11 before disassembling the device.

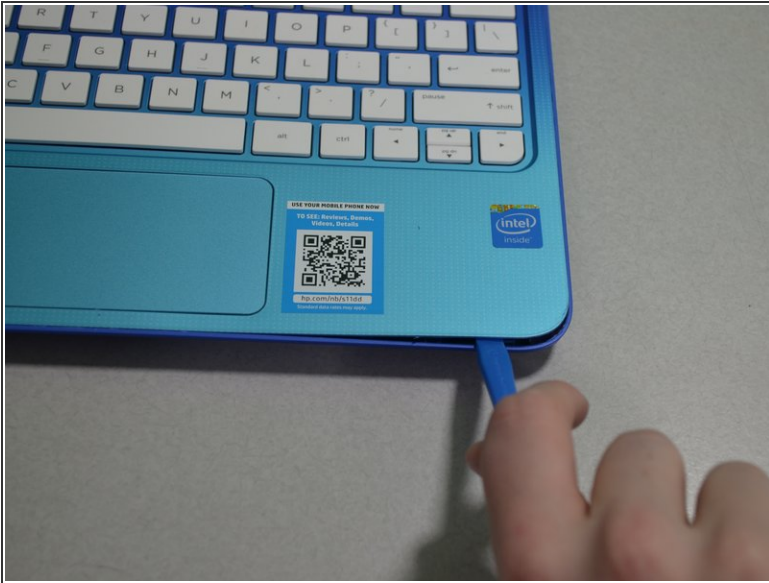
- Pry off the two elliptical rubber inserts (one in each corner).
- Pry off the two circular rubber inserts below the removed elliptical inserts (one in each corner).

Step 2



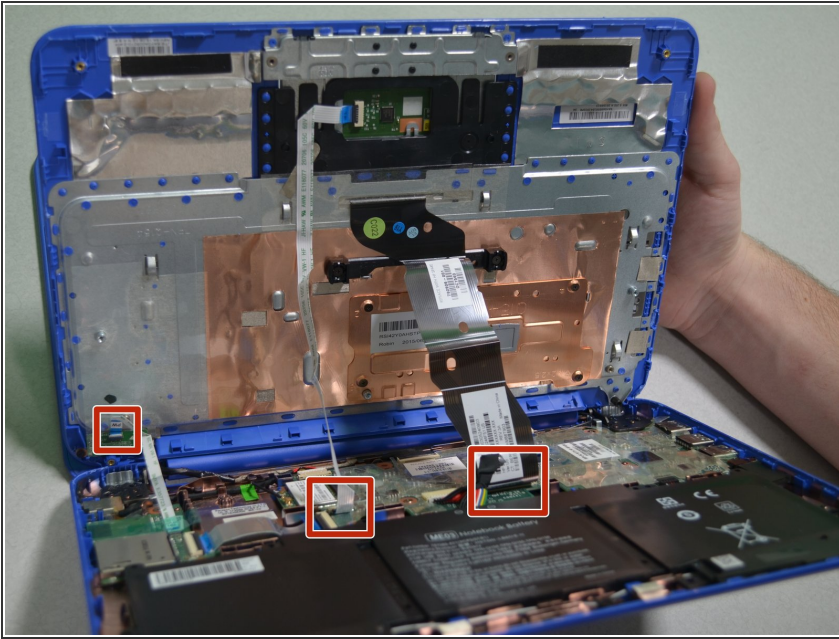
- Remove the eleven 5.6 mm Phillips #1 screws.

Step 3



- Using an iFixit opening tool, pry open the case to separate the keyboard from the main body.
- ⓘ HP Stream 11s tend to be really difficult to open. If your device is not opening with a standard iFixit opening tool, use a nylon spudger, then the metal spudger, or a metal Jimmy as the last resort.
- ⚠ When using the metal spudger or Jimmy, be careful not to bring these tools into contact with any electronic components of the device as this can damage the device.

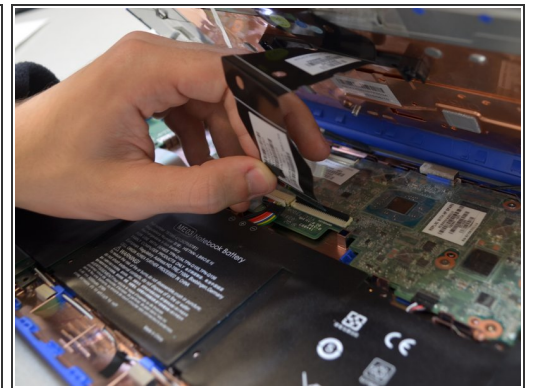
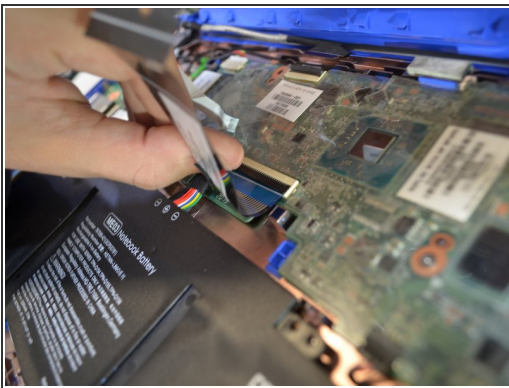
Step 4



⚠ Slowly lift the keyboard as there are multiple ribbon cables that could easily be damaged if lifted with force.

- Carefully lift the keyboard and locate the three ribbon cables connecting the main body of the laptop to the keyboard.

Step 5



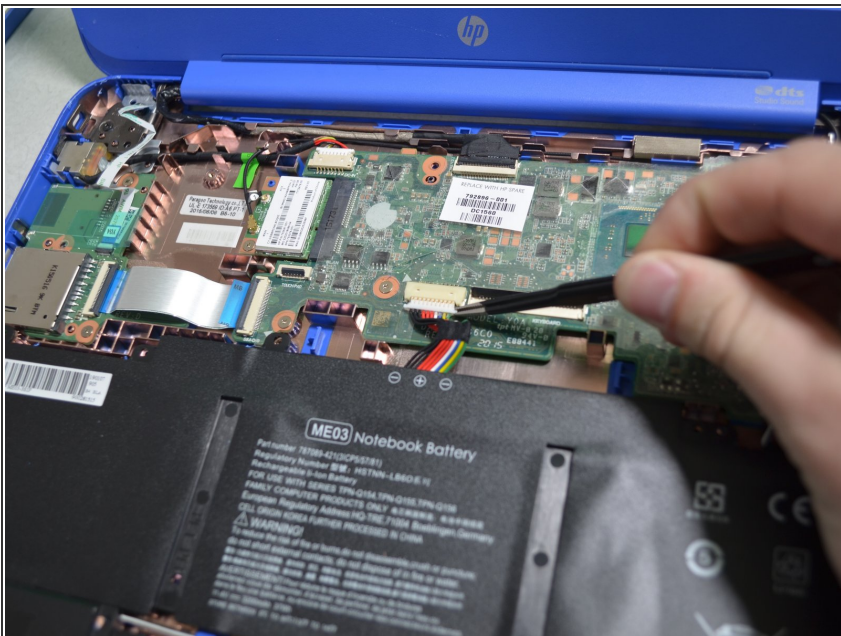
- Using your fingernail, lift the flaps on the ZIF connectors that are securing the three ribbon cables.
- Carefully disconnect the three ribbon cables.

Step 6



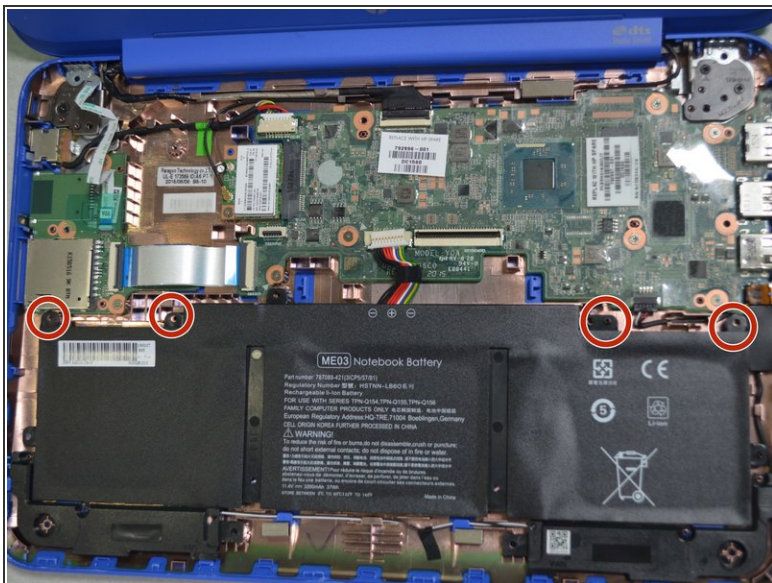
- Lift the keyboard out of the laptop to remove it from the device.

Step 7 — Battery



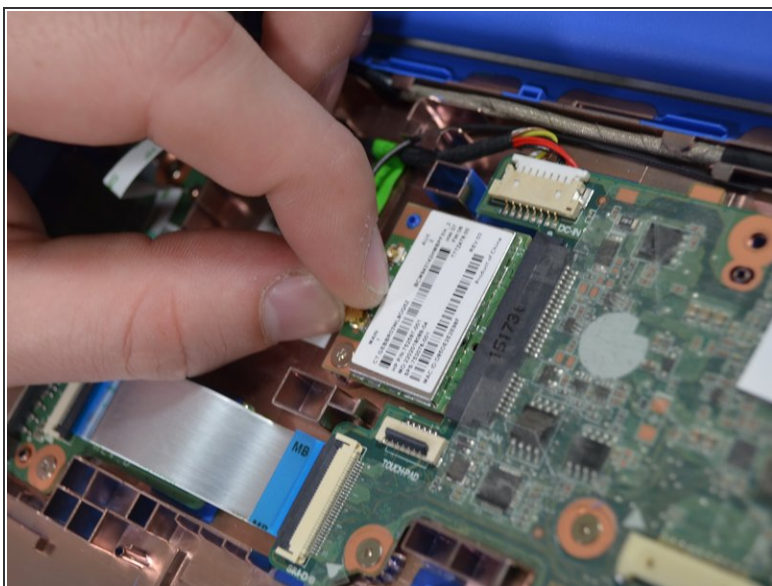
- Remove any tape holding the battery connector in place.
- Using your fingers, carefully unplug the battery.

Step 8



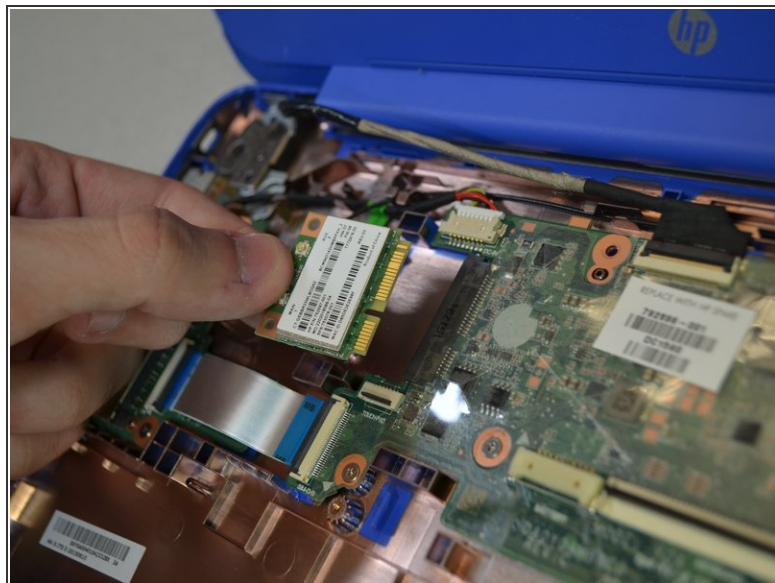
- Remove the four 3mm #000 Phillips screws holding the battery in place.
- Carefully lift the battery out of the laptop.

Step 9 — Wifi Chip



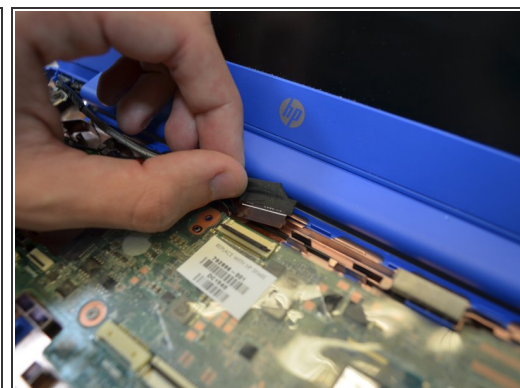
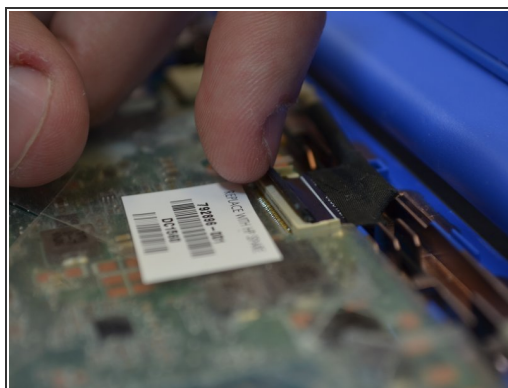
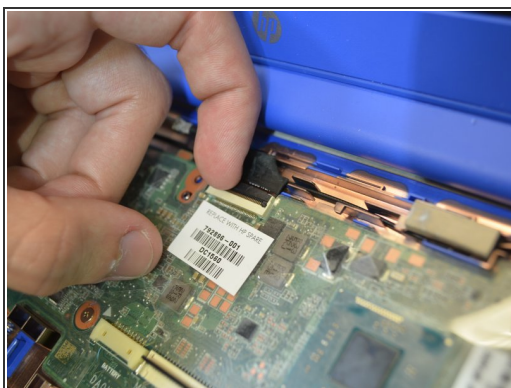
- Unplug the black wire attached to the wireless chip.

Step 10



- Remove the one 3mm Phillips #000 screw holding the wireless chip in place.
- Lift the wireless chip up and out.

Step 11 — Webcam



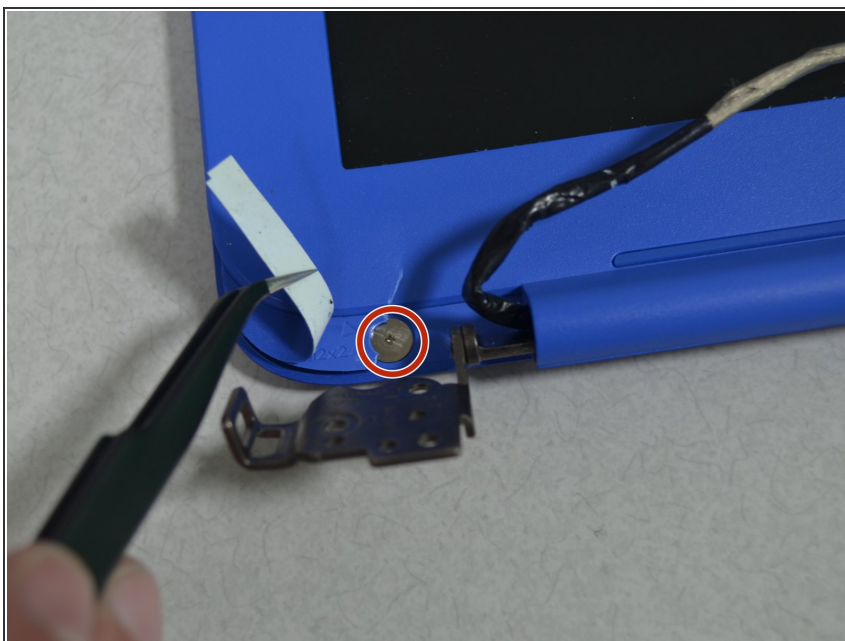
- Flip up the flap and unplug the display cord from the motherboard.

Step 12



- Using a JIS #1 screwdriver, remove the four 2.2 mm screws holding monitor to body.

Step 13



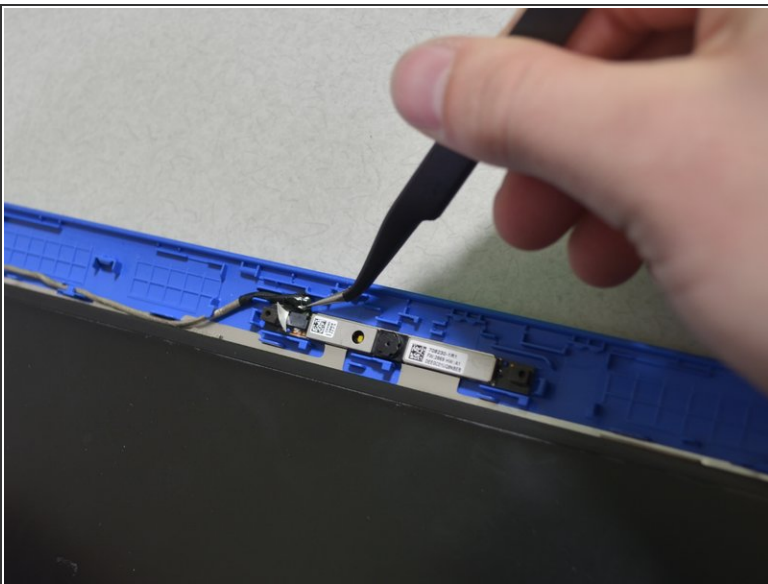
- Use tweezers to remove the screw covers from the lid.
- Unscrew the two 2.2 mm #000 Phillips screws.

Step 14



- Open the upper lid with the iFixit opening tool.

Step 15



- Disconnect the webcam cord using tweezers.
- Remove the webcam using tweezers.

To reassemble your device, follow these instructions in reverse order.