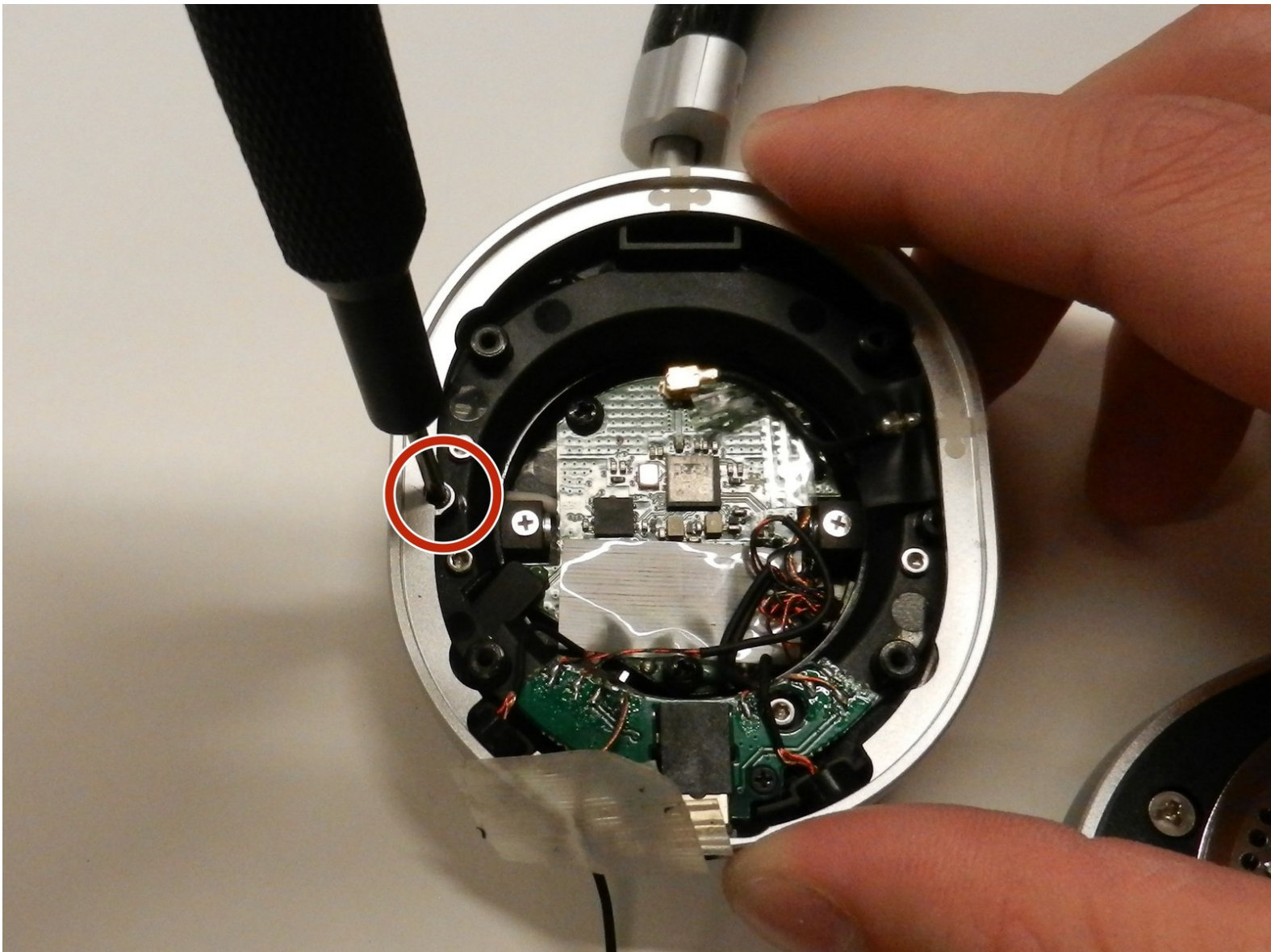




Master and Dynamic MW50 Motherboard Replacement

This is a guide on how to replace the motherboard within the Master and Dynamic MW50 wireless headphones.

Written By: Ryan Chan



This document was generated on 2020-11-18 11:38:21 AM (MST).

INTRODUCTION

You will want to disassemble the Left side of the headphones. This guide requires soldering, If you don't know how to solder, click [here](#) for a great guide.

TOOLS:

- [Desoldering Braid](#) (1)
 - [Soldering Iron](#) (1)
 - [Staples](#) (1)
 - [Y1 Tri-point Screwdriver](#) (1)
 - [Jimmy](#) (1)
 - [Solder](#) (1)
 - [Tweezers](#) (1)
 - [JIS #00 Screwdriver](#) (1)
 - [T4 Torx Screwdriver](#) (1)
-

Step 1 — Master and Dynamic MW50 Disassembly



- Pull the cushion off of the desired side by gripping the top of the headphones and pulling the cushion off.

Step 2



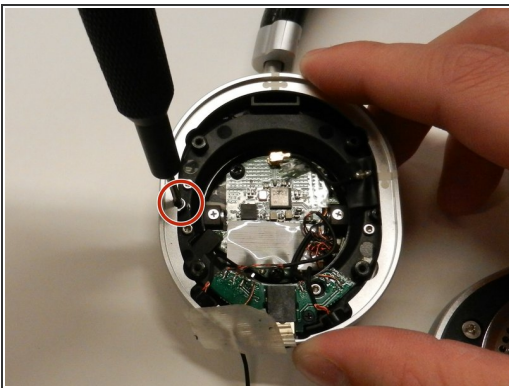
- Remove the four 5mm screws from the earpiece with a Y1 Triwing screwdriver.

Step 3



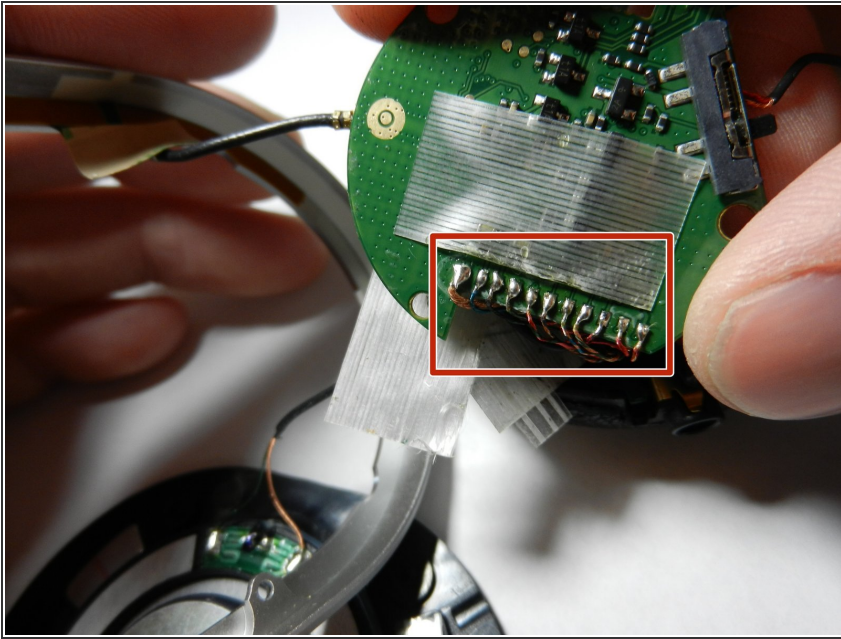
- Use the Jimmy to lift up the black cover to get inside the device.

Step 4 — Motherboard



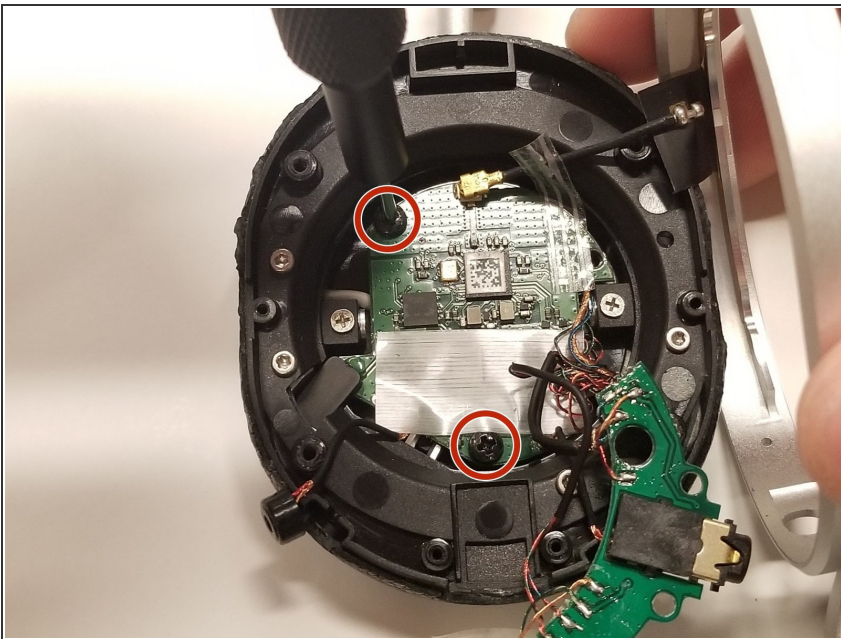
- Remove the 2mm screw holding the side cover plate in place with a JIS #00 screwdriver.
- Move the side cover off to the side.
- ⓘ The black cable connected to the motherboard from the side cover can be gently pulled off from the motherboard side. It isn't soldered on.

Step 5



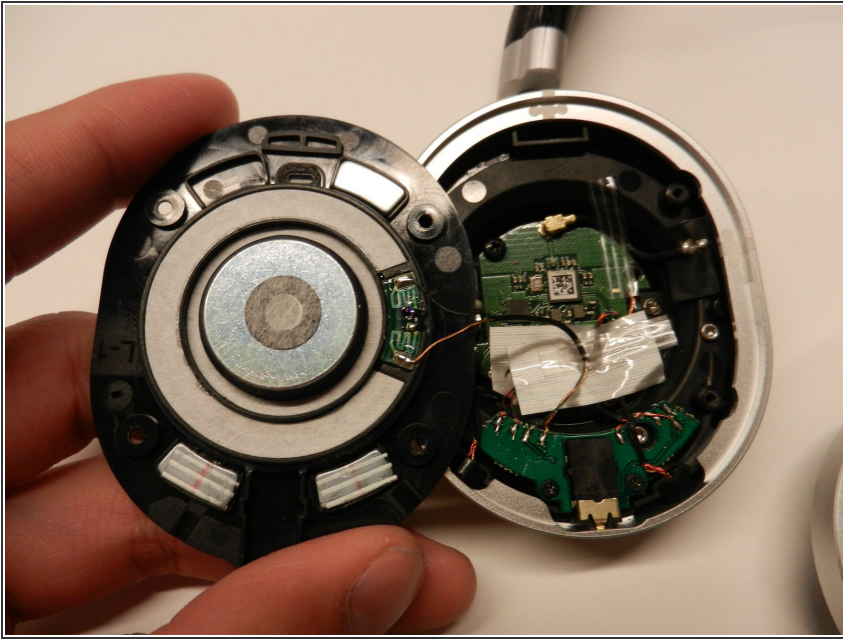
- Desolder all the wires connected to the motherboard.
- ☑ Refer to this picture for soldering the wires on the new motherboard.

Step 6



- Remove the two 2mm screws holding the motherboard in place.

Step 7



- Replace with new motherboard.

To reassemble your device, follow these instructions in reverse order. You may want to use the picture from Step 5 to correctly re-solder your device.