



# Sony Vaio PCG-41216L Hard Drive Replacement

If the laptop is having boot up issues or a...

Written By: john nunnelee



## INTRODUCTION

If the laptop is having boot up issues or a potentially failing drive, then use this guide to replace the hard drive.



### TOOLS:

- [Phillips #1 Screwdriver](#) (1)



### PARTS:

- [1 TB SSD](#) (1)
- [250 GB SSD](#) (1)
- [Crucial MX500 500 GB SSD](#) (1)
- [2 TB SSD](#) (1)

## Step 1 — Hard Drive



- Flip the laptop over to begin the process.

⚠ Make sure the laptop is turned off and unplugged from the power cable.

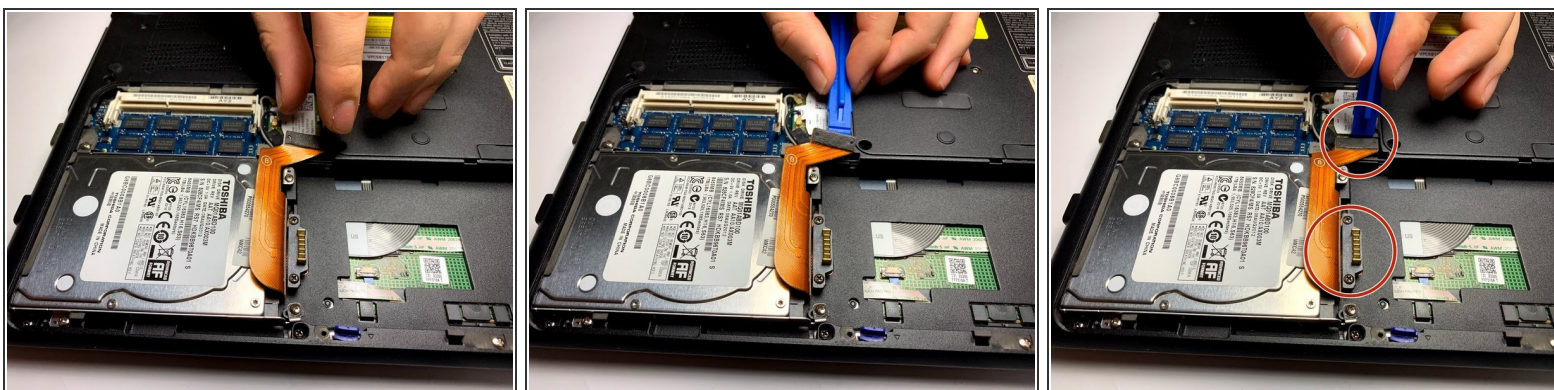
## Step 2



- Remove the two 7mm Phillips #1 screws holding the battery cover.



## Step 3



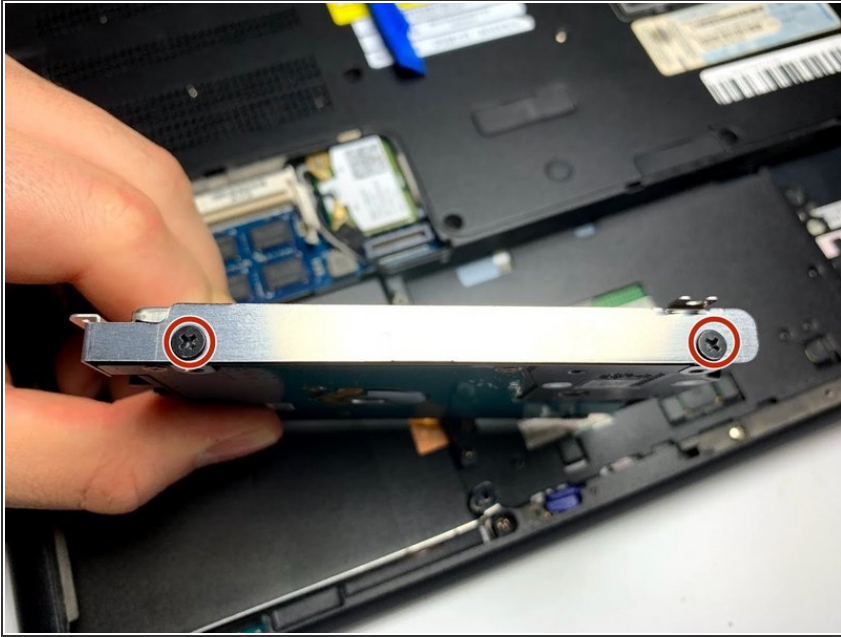
- Peel off the ribbon cable, starting at the top by the wifi card.

## Step 4



- Remove all of the 7mm Phillips #1 casing screws around the hard drive.

## Step 5



- Pull the hard drive out, then remove the 3mm Phillips screws that connect the hard drive to the casing.

To reassemble your device, follow these instructions in reverse order.