



Heavyduty Whirlpool Stacked Washer Dryer

Thermostat cut off Replacement

Whirlpool Dryer Thermostat cutoff replacement. Solution to dryer running but not heating.

Written By: Nicholas Steele



INTRODUCTION

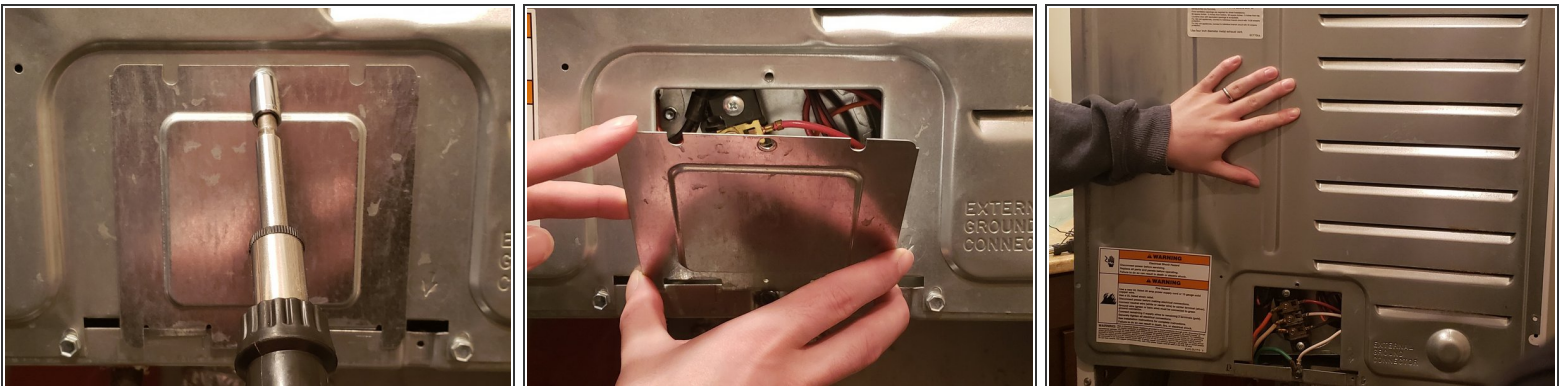
There are many different components to a dryer and finding the exact issue was difficult. The internet didn't provide a direct answer. So after reading on several different forums, I found I needed to use a voltmeter to find the bad component. Once I found it I simply looked up the product number and bam, had a working dryer in no time.

Step 1 — Thermostat cut off



- First of all we need to make room behind the dryer. To do this a dolly is recommended since its about 250lbs and can definitely scratch the floor if drug. Pull the machine out slowly until there is room to fit behind and still have arm space.
- The dryer vent, hot/cold water and drainage pipes can remain attached. But for safety unplugging the machine is mandatory. The plug is big and may require a little extra force to remove.

Step 2



- Now that we have safe access to the rear panel we must first remove the small plate on the back of the dryer. To do this simply unscrew the single screw at the top of the small plate and lift the plate out.

Step 3



- After setting aside the small panel we can proceed with the large panel.
- There is no special method or order to removing the screws. But on the last screw be aware the panel will fall so holding the panel is strongly suggested when removing the last screw.

To reassemble your device, follow these instructions in reverse order.