



# Ridgid R86008 Gearbox Replacement

This repair guide shows how to disassemble the gearbox.

Written By: Lauren Dierkop



## Step 1 — Gearbox



- ❗ Before you begin make sure battery is removed from drill.
- Loosen the four 13mm T10 Torx screws from the back of the drill and remove cap.

## Step 2



- Remove the two 25mm T10 Torx screws from the front of the drill.

### Step 3



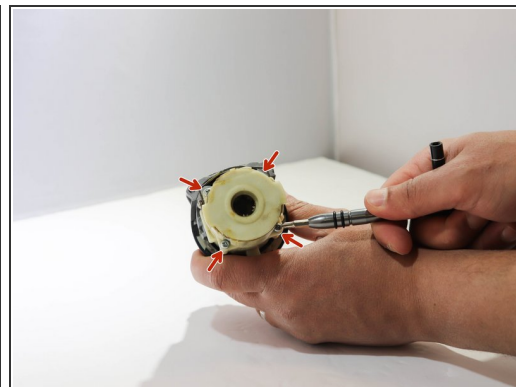
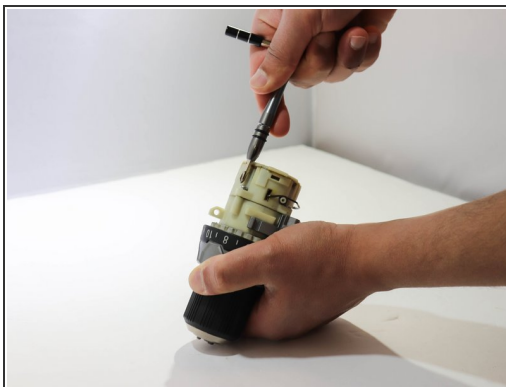
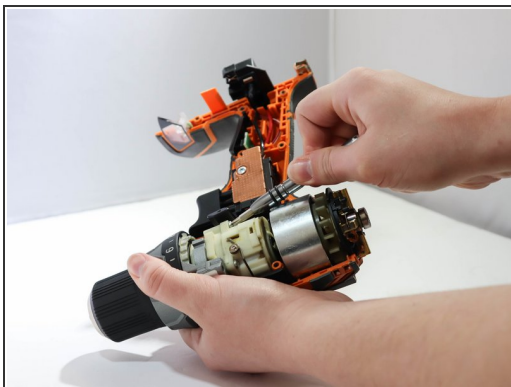
- Remove the remaining 13mm T10 Torx screws and pull apart drill case.

### Step 4



- Identify gearbox.

## Step 5



- Using a PH1 screwdriver, remove the four 13mm PH screws from the back of the gearbox.
- ⓘ It may be easier to unscrew the screws by separating the front end of the drill from the rest of the drill.

## Step 6



- Pull apart gearbox.

To reassemble your device, follow these instructions in reverse order.