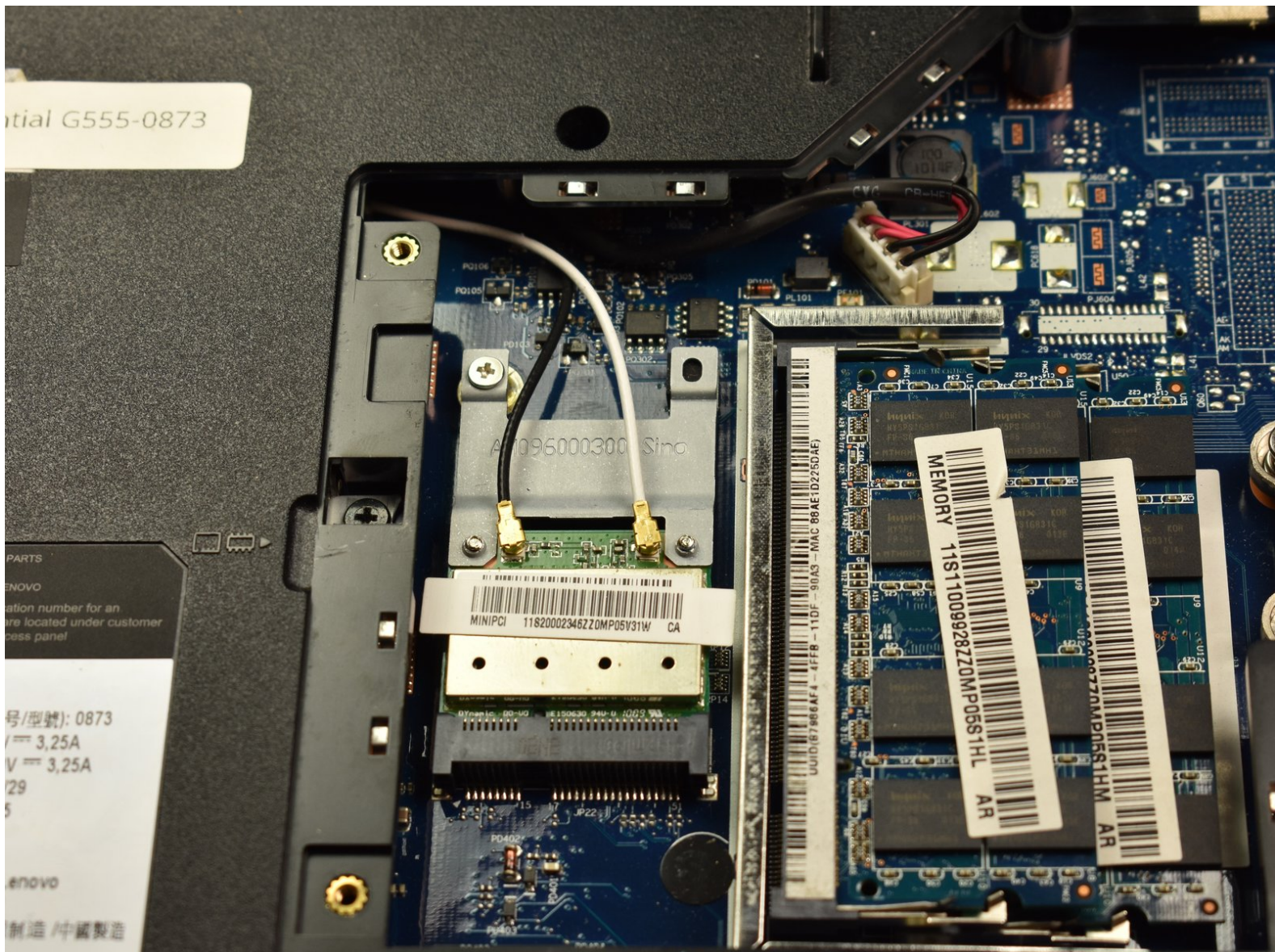




Lenovo Essential G555-0873 Wireless Card Replacement

This guide describes how to remove and replace the wireless card.

Written By: Michael Elledge



INTRODUCTION

Use this guide to remove and replace the wireless card in the Lenovo Essential G555-0873.



TOOLS:

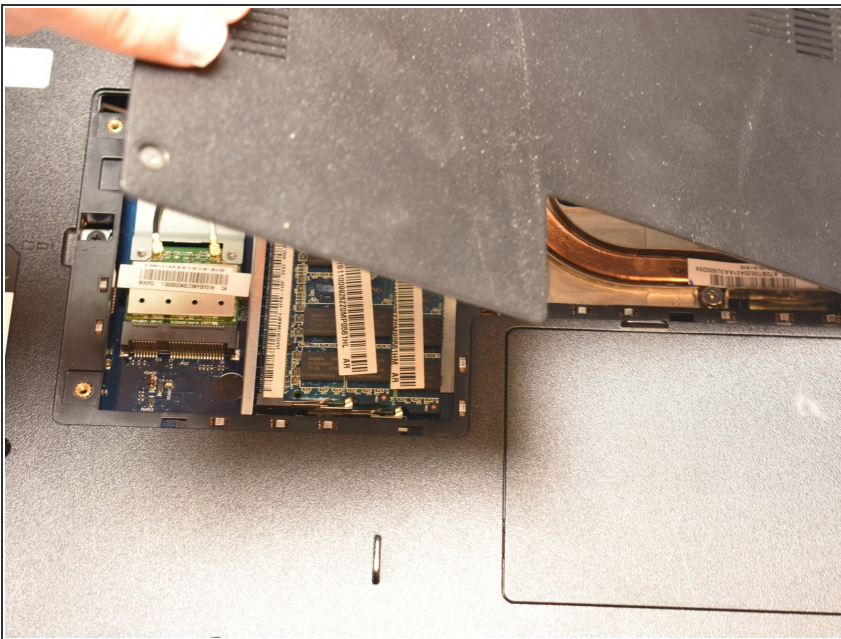
- [Phillips #0 Screwdriver](#) (1)
-

Step 1 — Bottom Panel



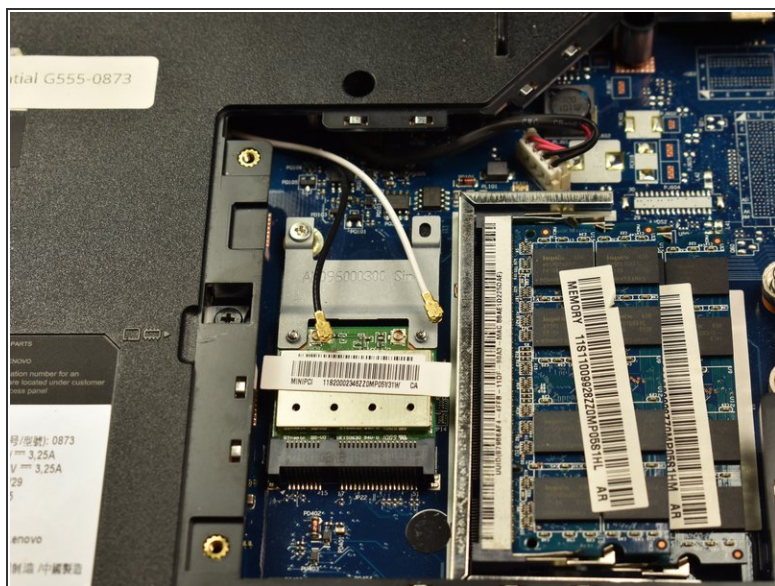
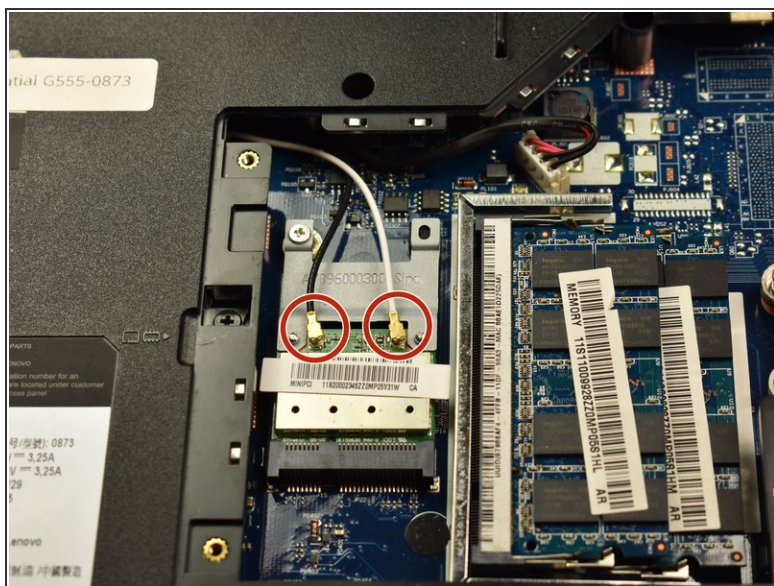
- Unscrew the two 5.1 mm screws that secure the bottom cover.
- ⓘ Note that the screws will not come all the way out of the sockets.

Step 2



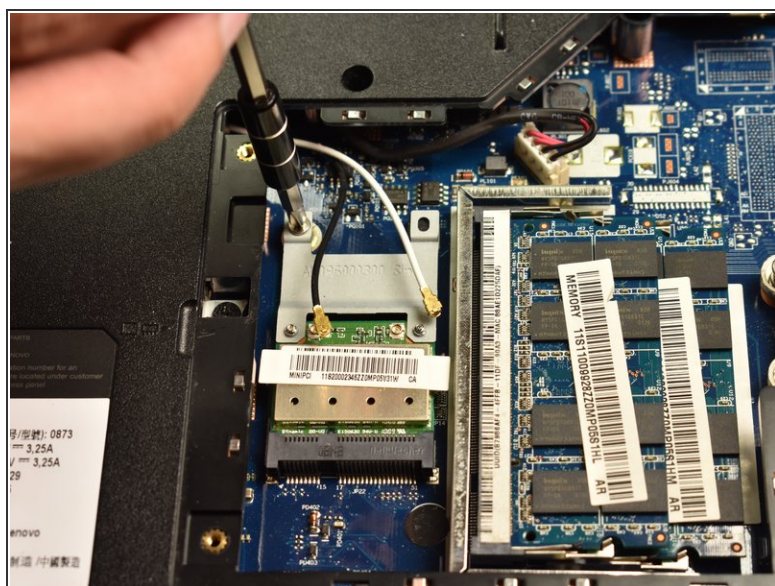
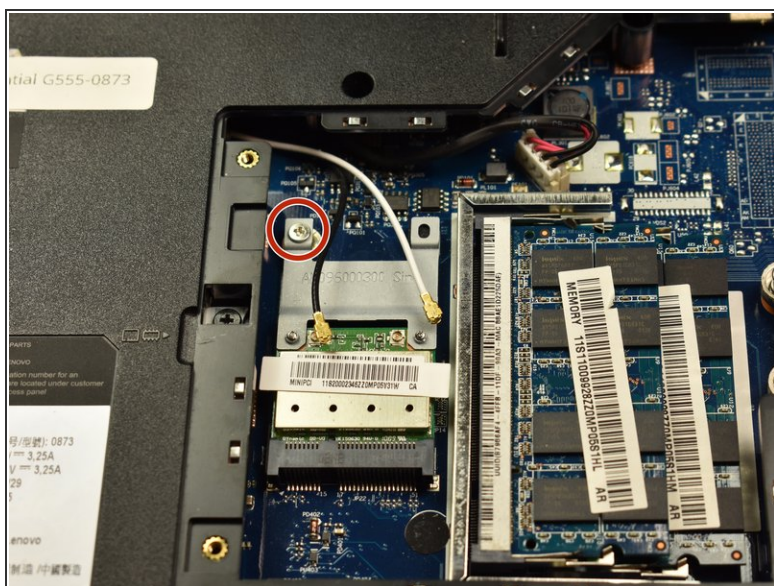
- Lift from the notch until the back panel comes up.

Step 3 — Wireless Card



- Gently unplug the black and white wires shown in the picture from the wireless card.


Step 4



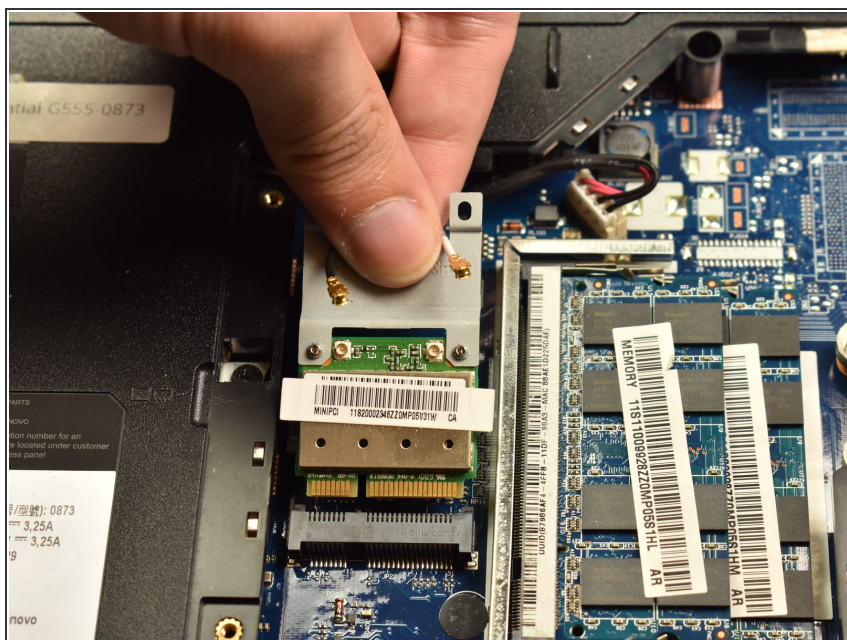
- Unscrew the 3.6 mm screw shown in the picture.


Step 5



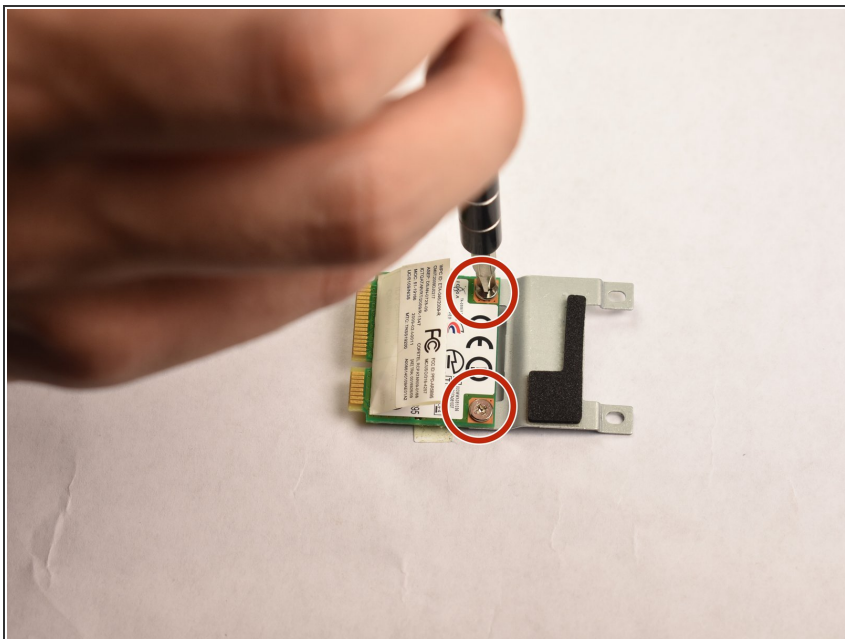
-  The wireless card will pop up to approximately a 30 degree angle.

Step 6



-  Pull the wireless card out of its socket.

Step 7



- Flip the wireless card over and unscrew the two screws shown in the picture, detaching the wireless card from the plate.

To reassemble your device, follow these instructions in reverse order.