



Acer Aspire 5742 WLAN Card Replacement

Replace a faulty WLAN card in your Acer Aspire 5742.

Written By: Skylar MacDonald



INTRODUCTION

Replace a faulty WLAN card in your Acer Aspire 5742 if you keep losing your Wi-Fi connection.

TOOLS:

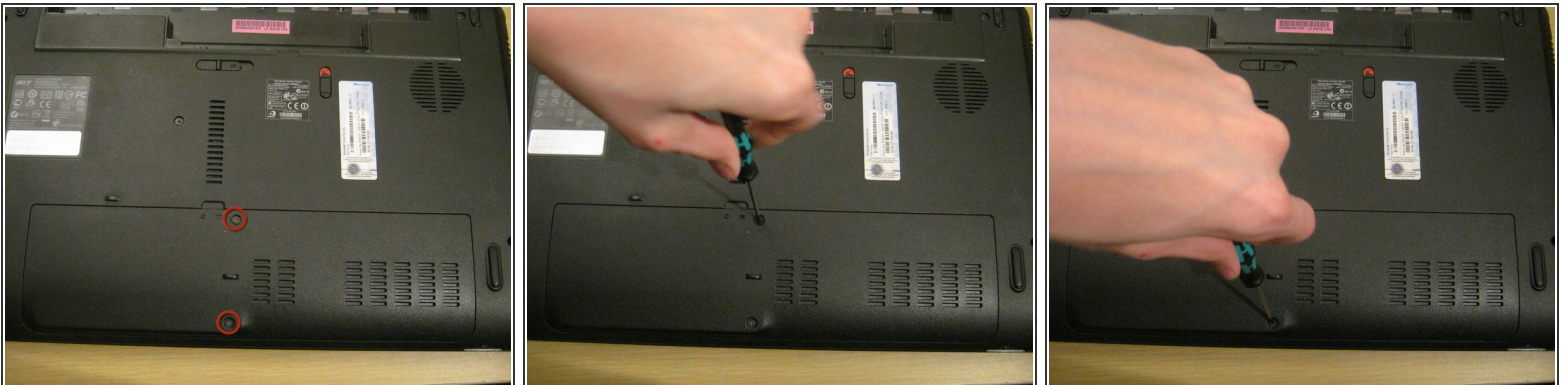
- [Phillips #00 Screwdriver](#) (1)
 - [Scotch tape](#) (1)
(*optional*)
 - [Spudger](#) (1)
-

Step 1 — Battery



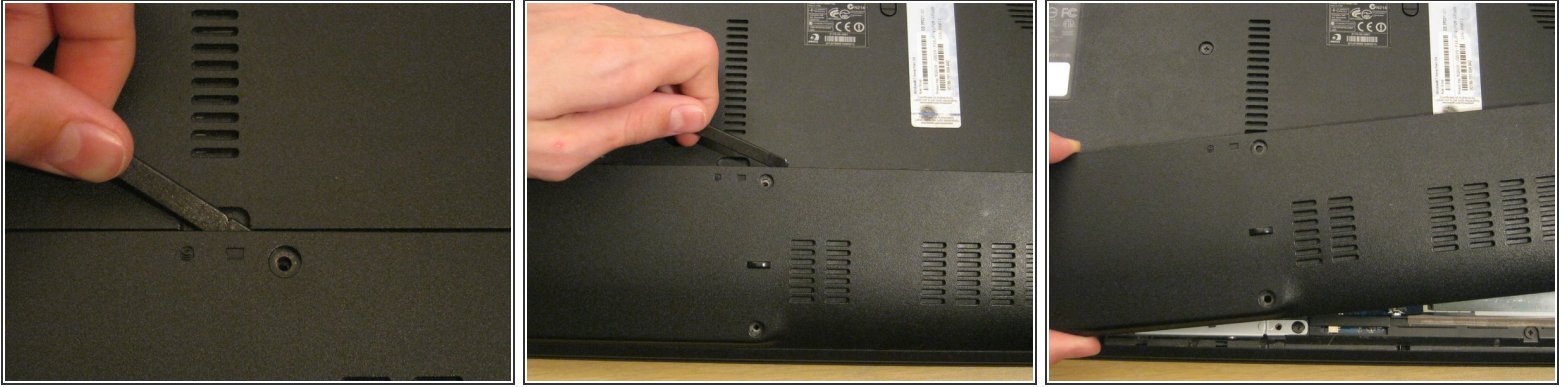
- Move the battery catch to the "unlocked" position.
- Pull back the second spring-loaded battery catch until the battery pops up.
- Remove the battery.

Step 2 — Cover Panel



- Turn the notebook around to face you.
- There are two Phillips #00 screws securing the cover panel to the rest of the notebook. Remove these screws.

Step 3

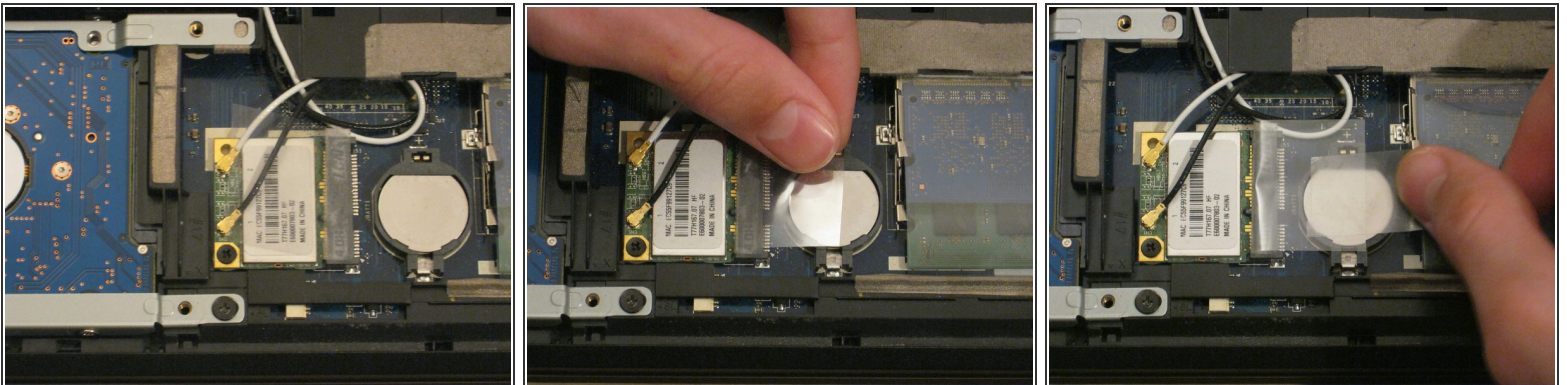


- Use a spudger to release the panel from the plastic retaining clips keeping it in place.

 Do not apply too much force, or you may break the clips.

- Remove the panel and set it aside.

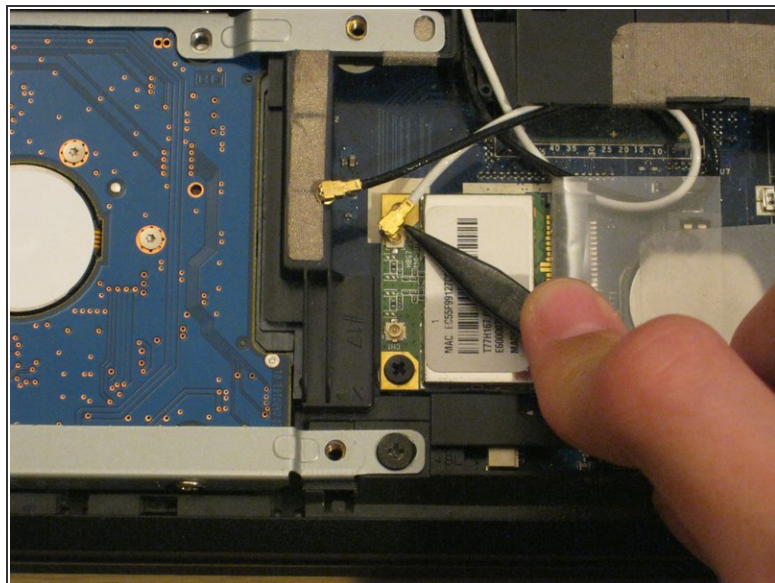
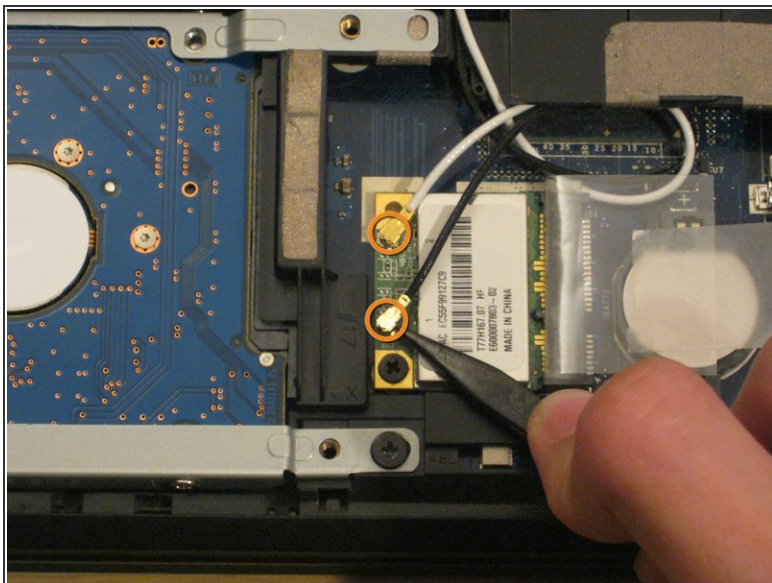
Step 4 — WLAN Card



- The WLAN card is protected by a transparent cellophane cover.
- Lift this cover away from the WLAN card. It will not come free from the WLAN card socket.

 You may wish to use some Scotch tape to hold the cover in place while you work.

Step 5



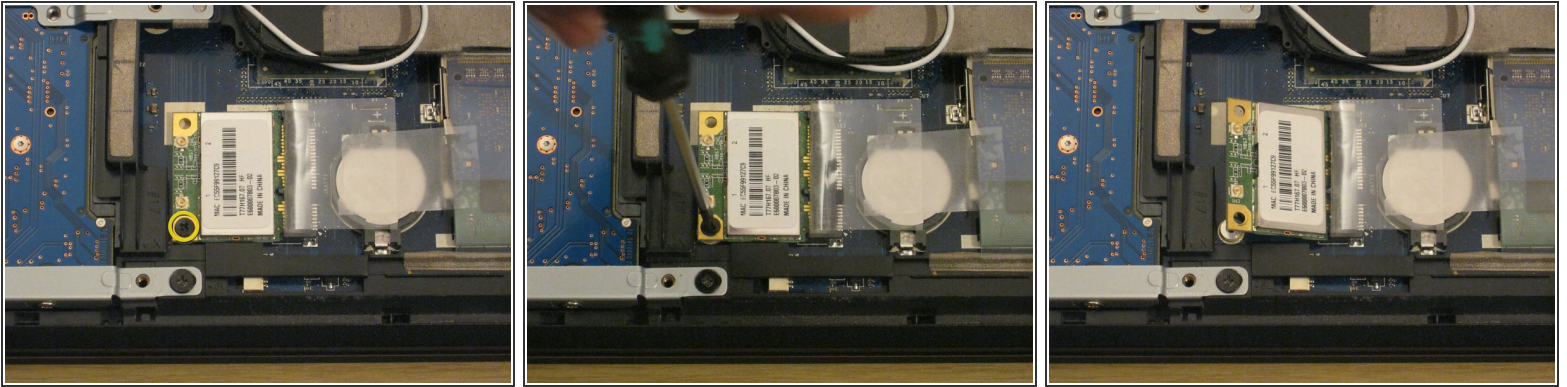
- Use the pointy end of a spudger to remove the antenna connectors from the WLAN card.

Step 6



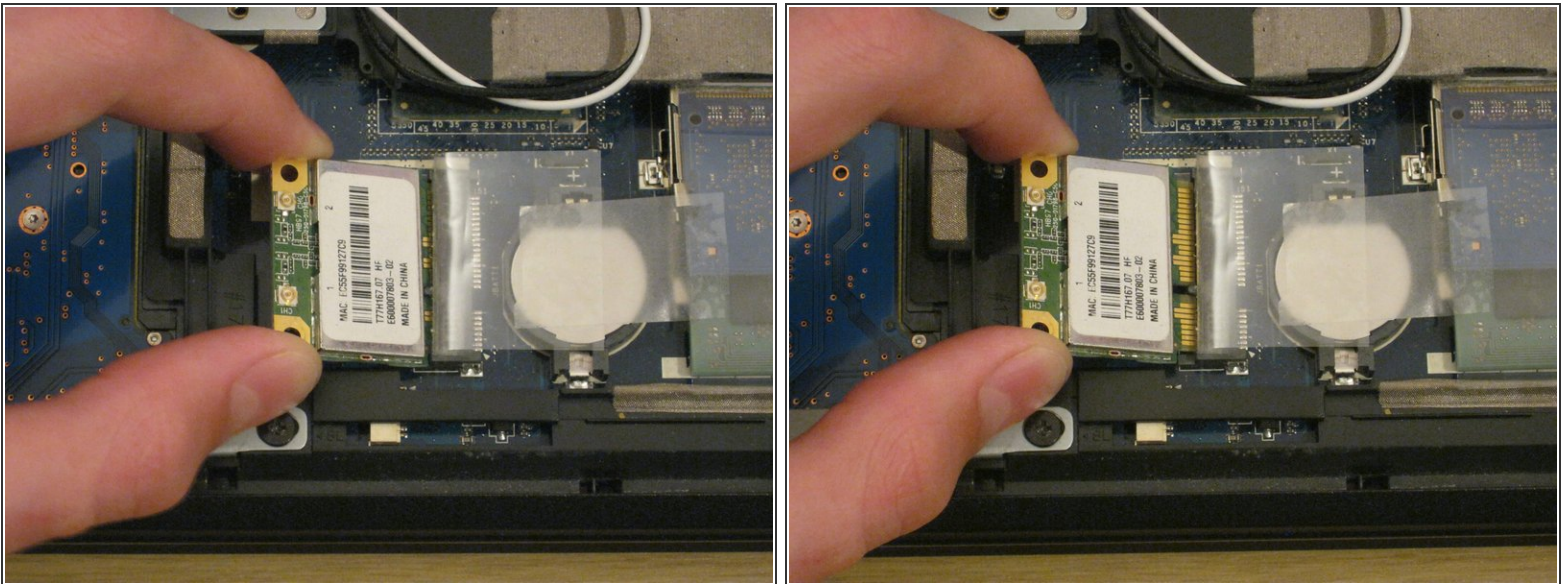
- ⓘ You may find it useful to pull the antenna cables out from under the plastic retaining clip so you can move them out of the way while you work.

Step 7



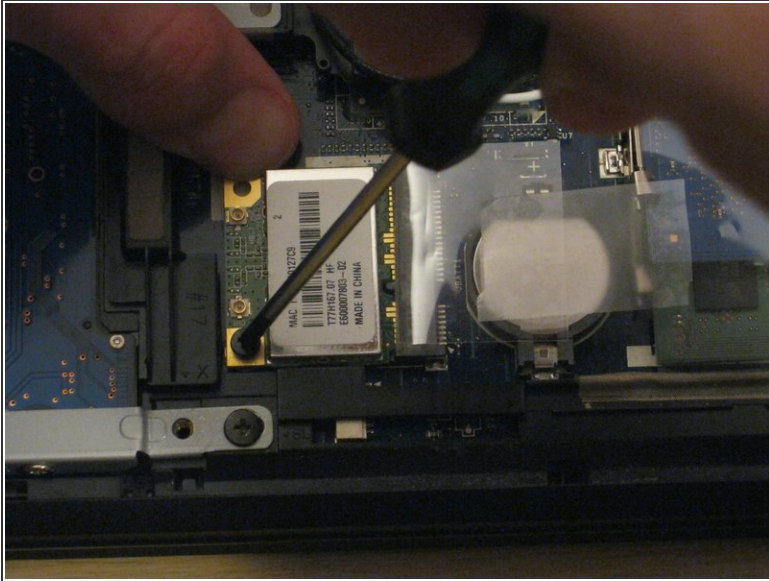
- There is one Phillips #00 screw keeping the WLAN card attached to the notebook.
- Remove this screw.
- The WLAN card will spring up from the notebook at an angle.

Step 8



- Just like RAM, hold the WLAN card by the edges and pull it out at an angle.

Step 9



- ① When you're installing the new WLAN card, you might want to hold it down with one hand while you put the screw in with the other.
- You might also want to put the antenna cables back in using the flat end of a spudger.

To reassemble your device, follow these instructions in reverse order.