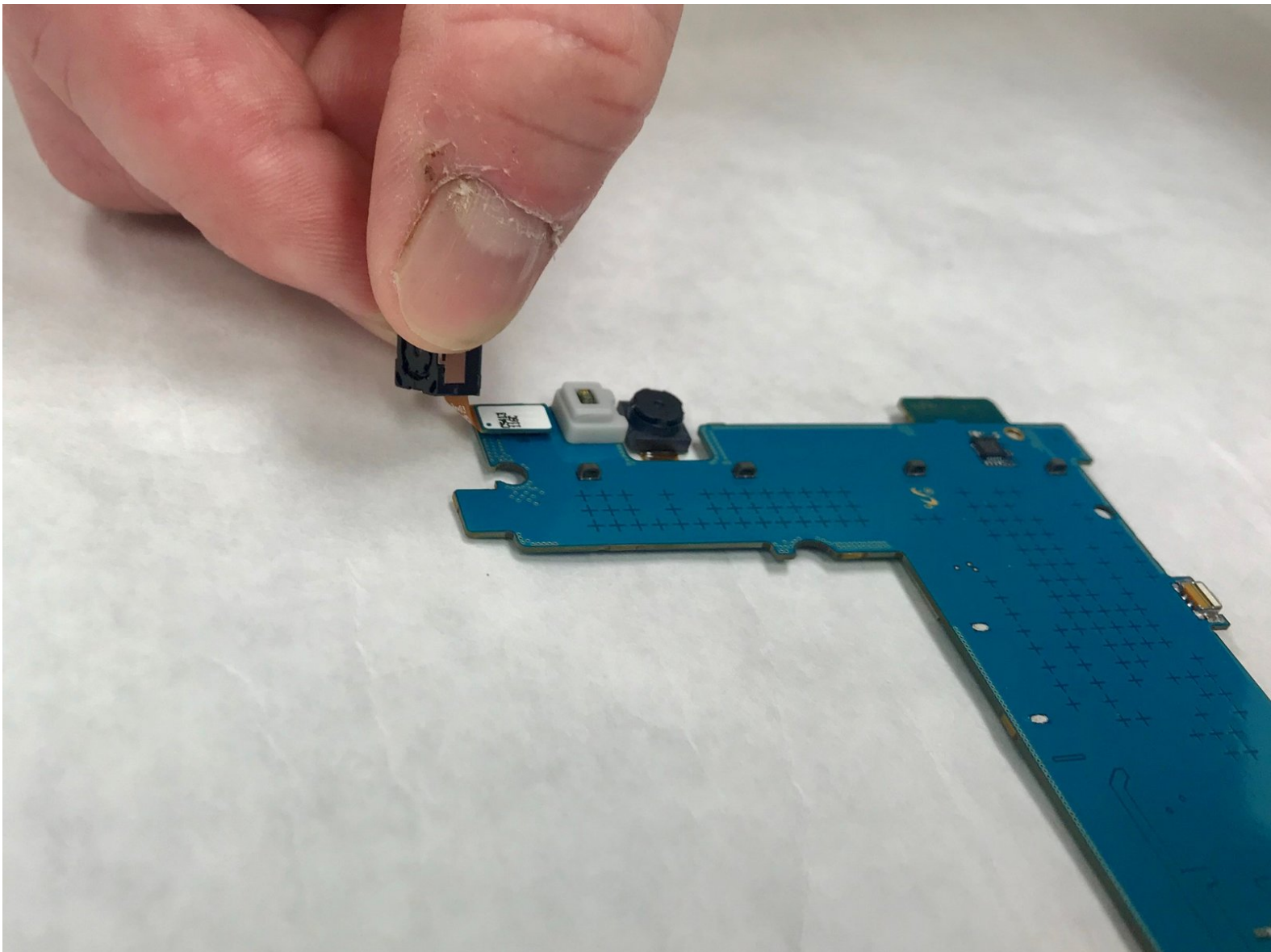




Samsung Galaxy Tab A 9.7 Rear Camera Replacement

This guide provides step by step instructions on how to replace the rear camera on your Samsung Galaxy Tab A 9.7.

Written By: Makenzie D'Elia



INTRODUCTION

This replacement guide will help you easily follow the steps in order to replace the rear camera on a Samsung Galaxy Tab A 9.7. For clarification purposes, the rear camera is underneath the motherboard. The difficulty of this guide is moderate and requires special attention to details.



TOOLS:

- [iFixit Opening Tools](#) (1)
- [Phillips #000 Screwdriver](#) (1)
- [Magnetic Project Mat](#) (1)



PARTS:

- [Galaxy Tab A 9.7 Rear Camera](#) (1)

Step 1 — Rear Camera



- Pry along the edge of the Samsung Galaxy Tab A 9.7 with an iFixit opening tool.

Step 2



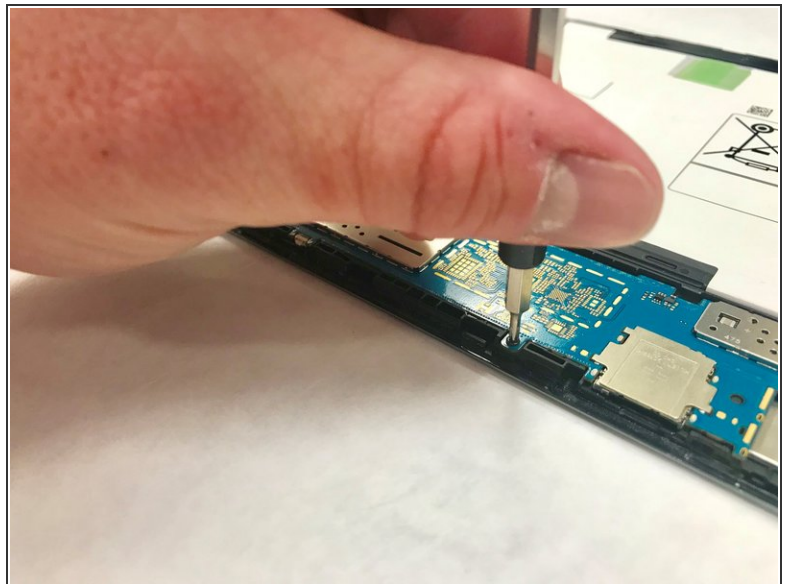
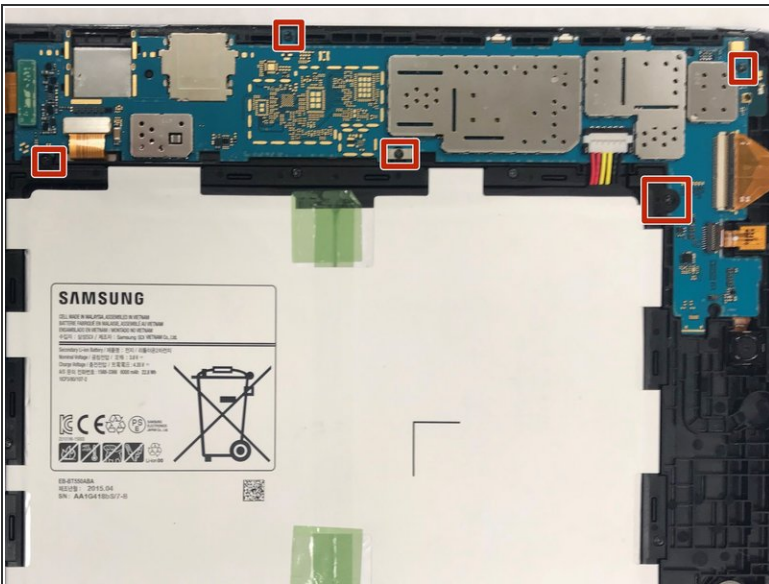
- Insert a second iFixit opening tool along the edge and begin to pry open the back cover a little with each one.

Step 3



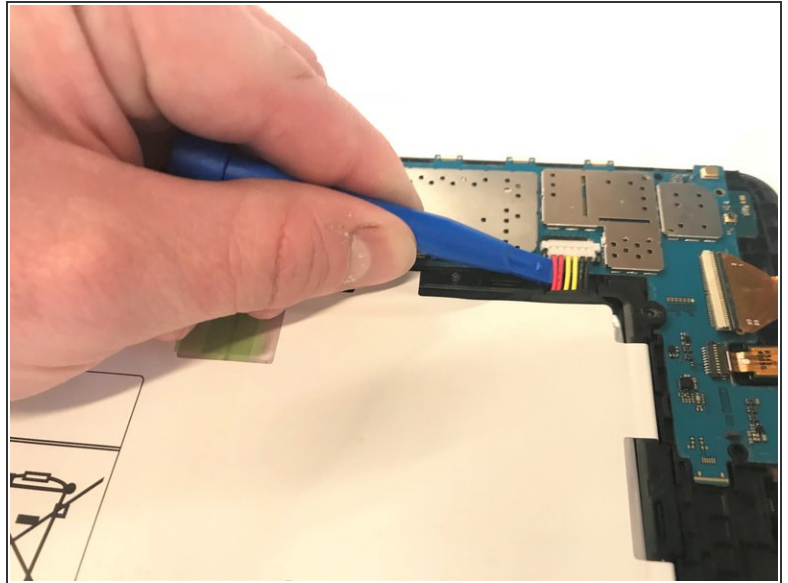
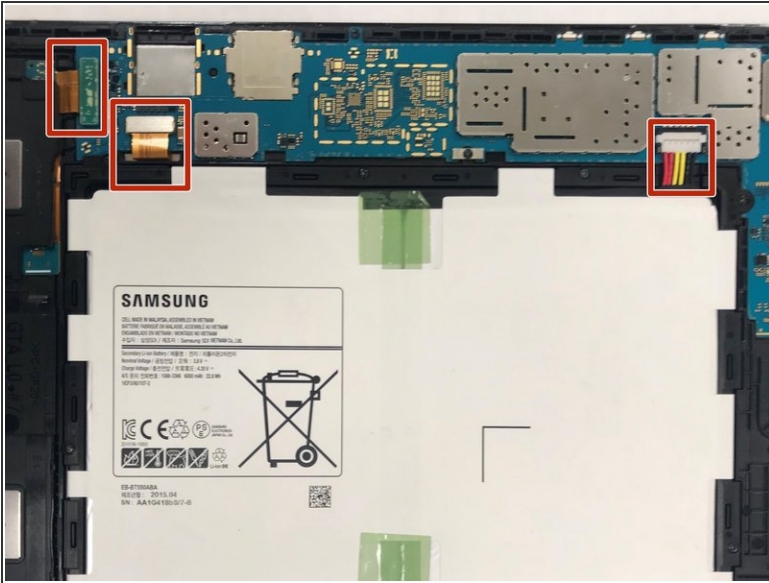
- Remove one of the iFixit opening tools and begin to go around the device with the other one until the back cover pops off.

Step 4



- Remove five 2.8 mm screws using the Phillips #000 screwdriver.

Step 5



- Disconnect all wires and strips that connect the motherboard to any other part of the device with an iFixit opening tool.

⚠ Lift up gently on all wires and strips.

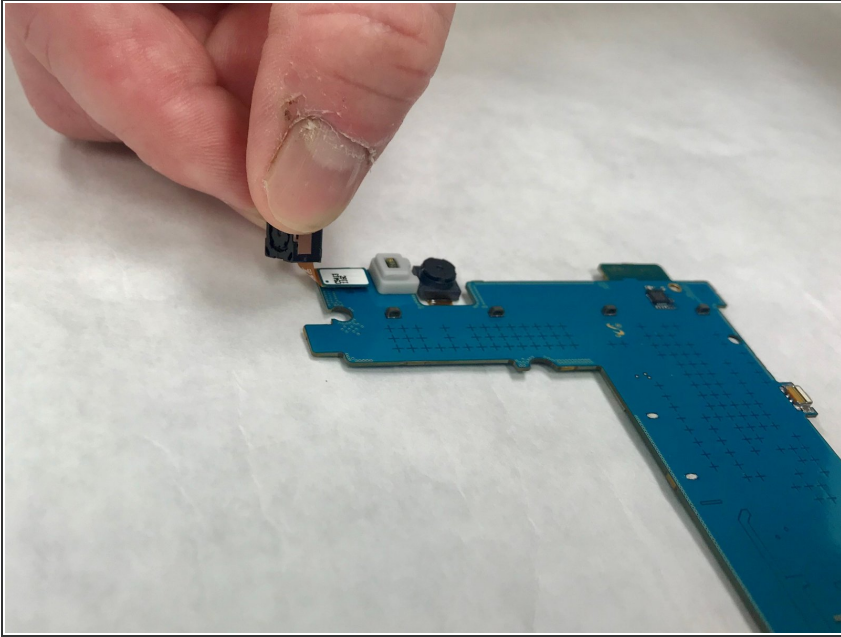
Step 6



- Lift the motherboard out of the back panel using an iFixit opening tool.

⚠ Be gentle when wiggling the motherboard out from underneath the battery's protective edge.

Step 7



- Pull off the rear camera on the back of the motherboard and replace.

To reassemble your device, follow these instructions in reverse order.