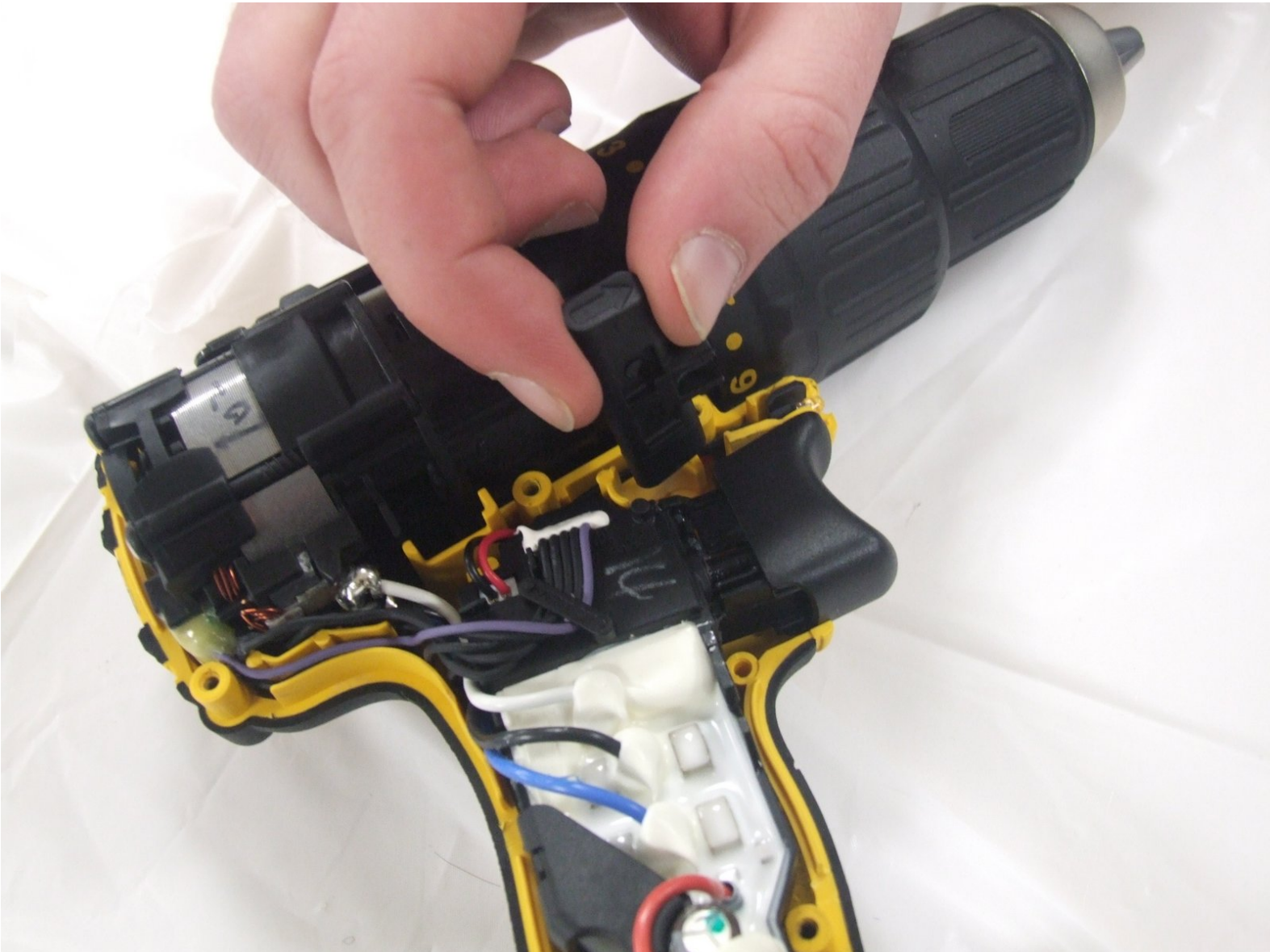




# Dewalt DCD778 Forward/Reverse Switch Replacement

This guide is to help replace Forward/Reverse switch on you Dewalt DCD778.

Written By: Brittany



---

## INTRODUCTION

This guide will teach you how to properly replace your forward/reverse switch for the Dewalt DCD778.

---



### TOOLS:

- [T15 Torx Screwdriver](#) (1)
-

## Step 1 — Battery



- Grab the drill in one hand and cup the battery (located at the bottom of the drill) with the other hand.

## Step 2



- Use your other hand to push down on the yellow button on the battery.

### Step 3



- Pull the battery in a horizontal direction away from the drill.

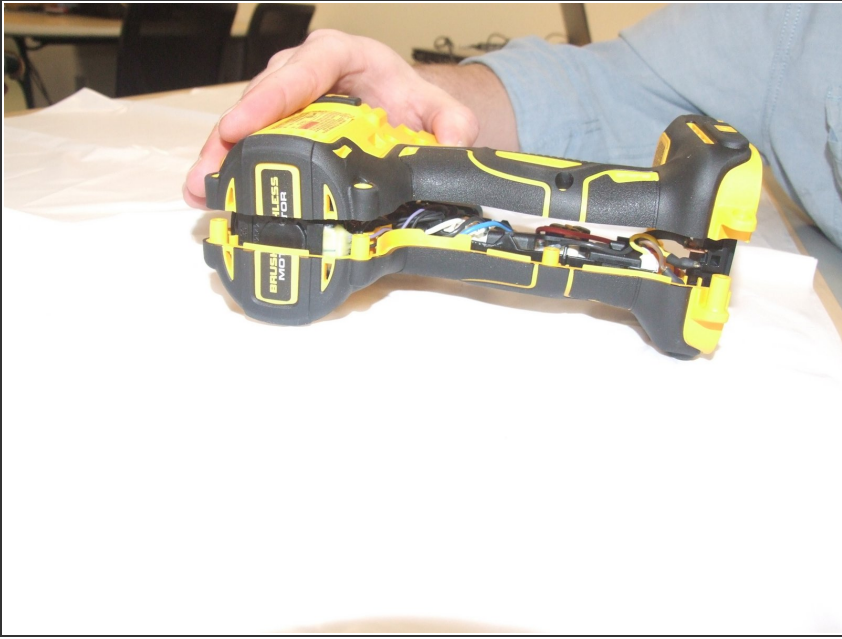
### Step 4 — Forward/Reverse Switch



- Remove the eight 16 mm, Torx Security #15 screws.



## Step 5



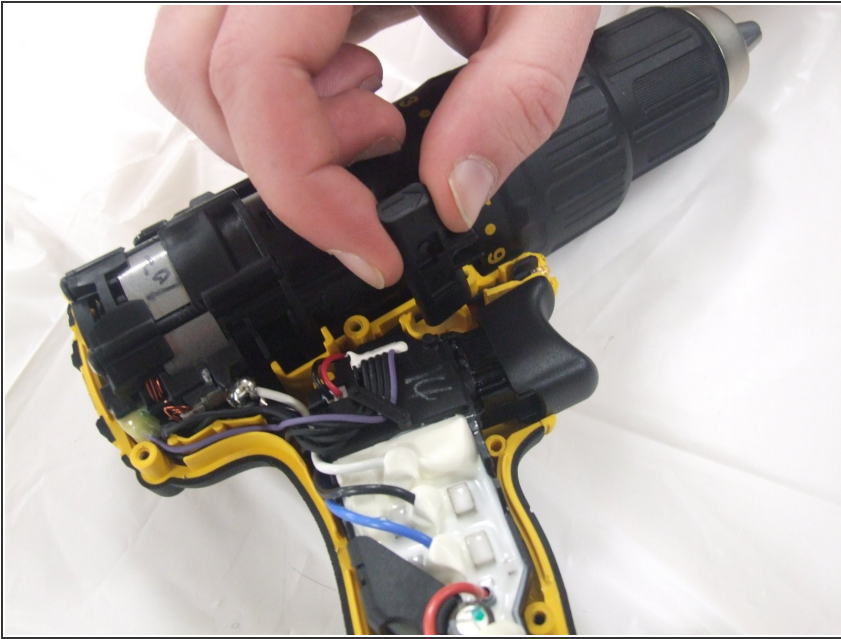
- Lay the drill on its side and gently lift the top half off it.

## Step 6



- Remove the drill mechanism from the shell.

## Step 7



- Disconnect the forward/reverse switch from the trigger by pulling the mechanism out and leaving the switch in the frame.
- ☑ To replace just pull the switch out and put the new one in the opening.

To reassemble your device, follow these instructions in reverse order.