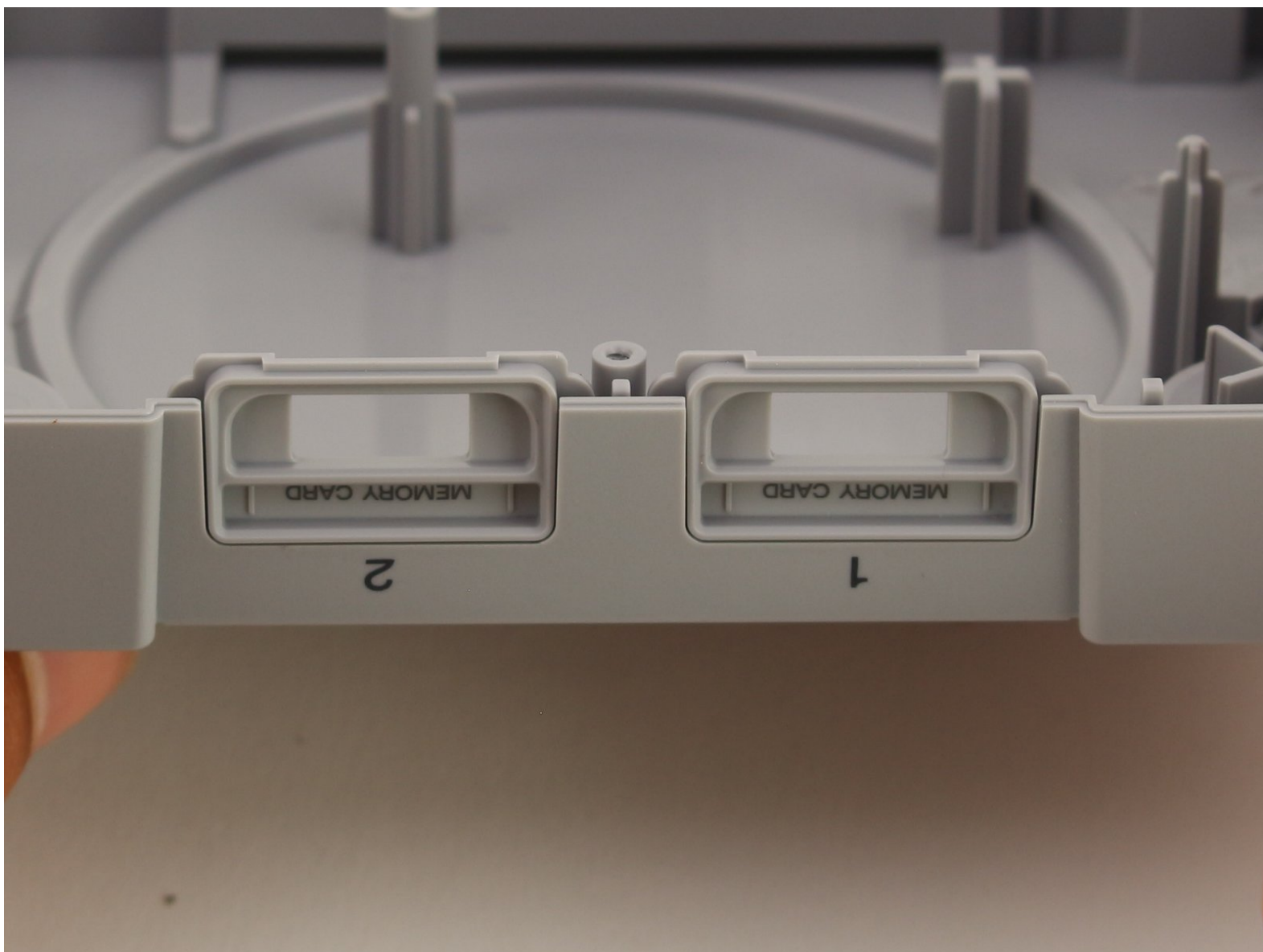




PlayStation Classic Controller Port Replacement

A demonstration of how to replace the USB controller ports on the PlayStation Classic video game system.

Written By: Maxwell Webb



INTRODUCTION

This guide demonstrates how to replace the USB controller ports on the front of the PlayStation Classic video game console.



TOOLS:

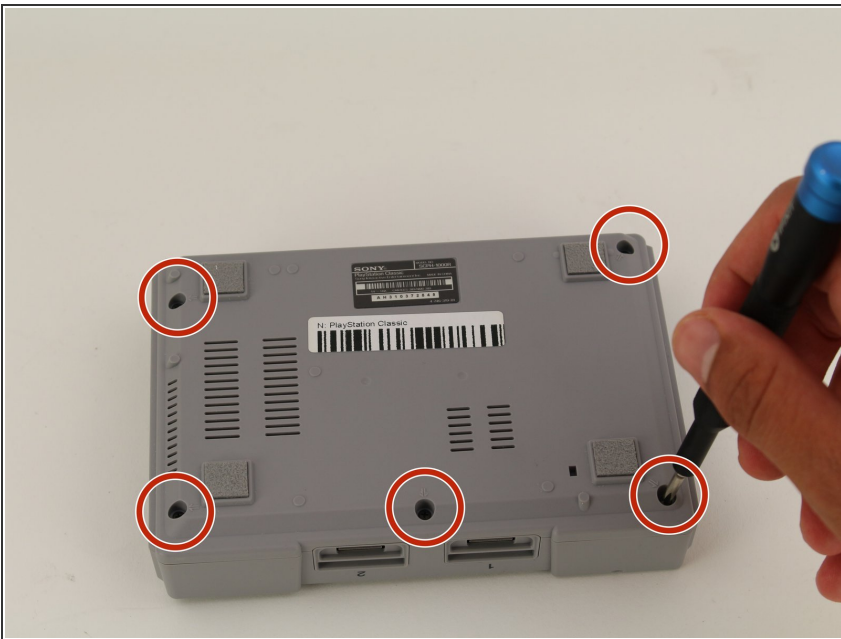
- [Phillips #00 Screwdriver](#) (1)
 - [Jimmy](#) (1)
-

Step 1 — Motherboard



- Flip the console so its back is facing up.

Step 2



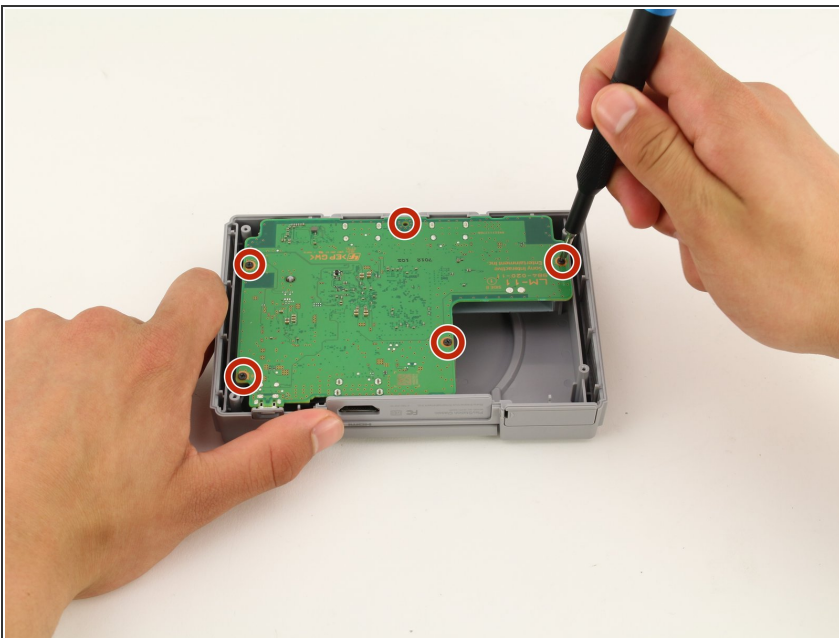
- Remove the five 3mm screws using the Phillips #00 screwdriver.
- ☑ Make sure to keep your screws together in a secure location to avoid misplacement.

Step 3



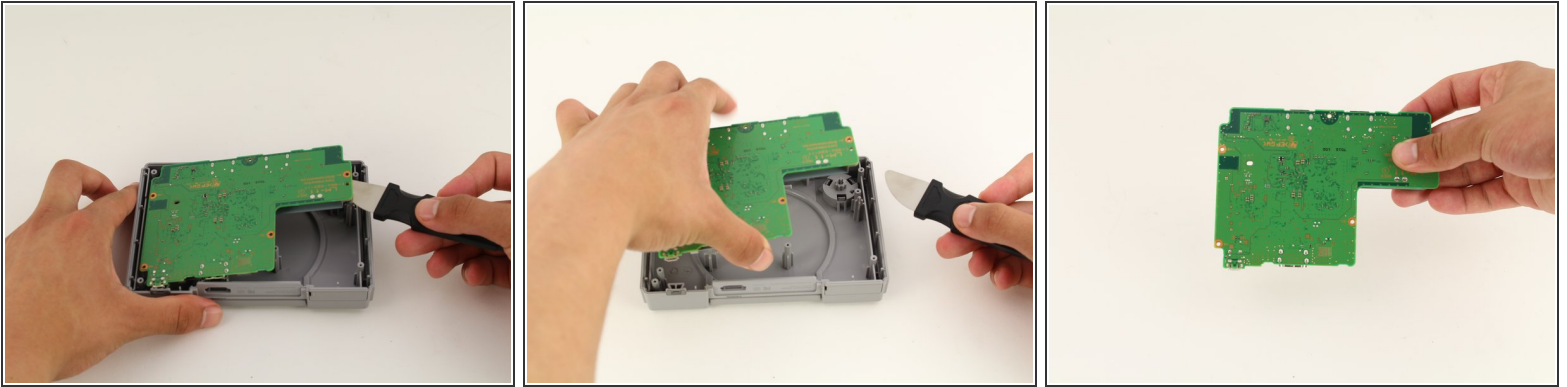
- Remove the back plate from the rest of the console using your hands or the Jimmy tool.

Step 4



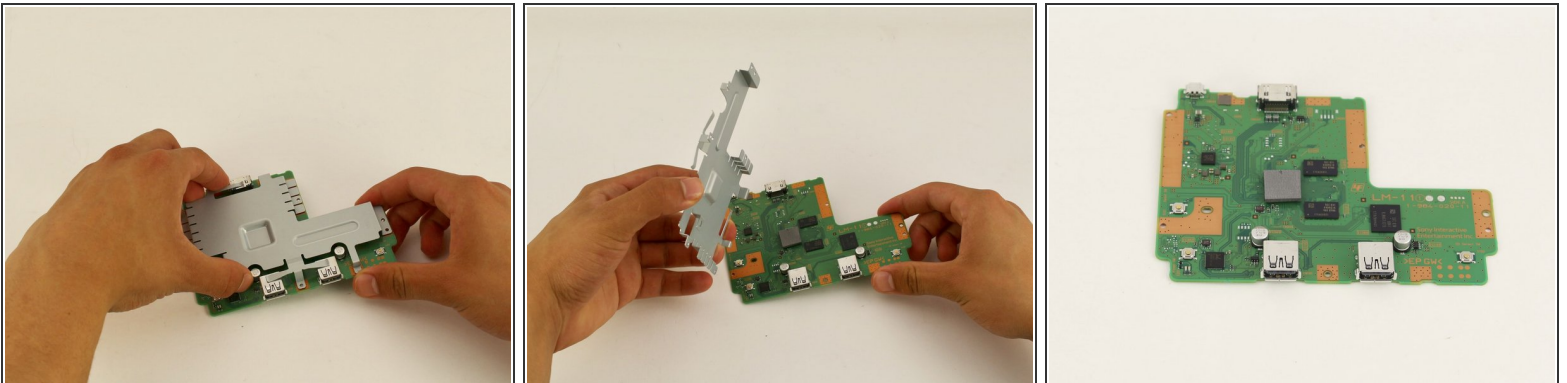
- Unscrew the motherboard's five 3mm screws with the Phillips #00 screwdriver.
- ⚠ Be careful not to apply too much force. The motherboard is flimsy and easy to break.
- ☑ Keep track of your screws once they are removed.

Step 5



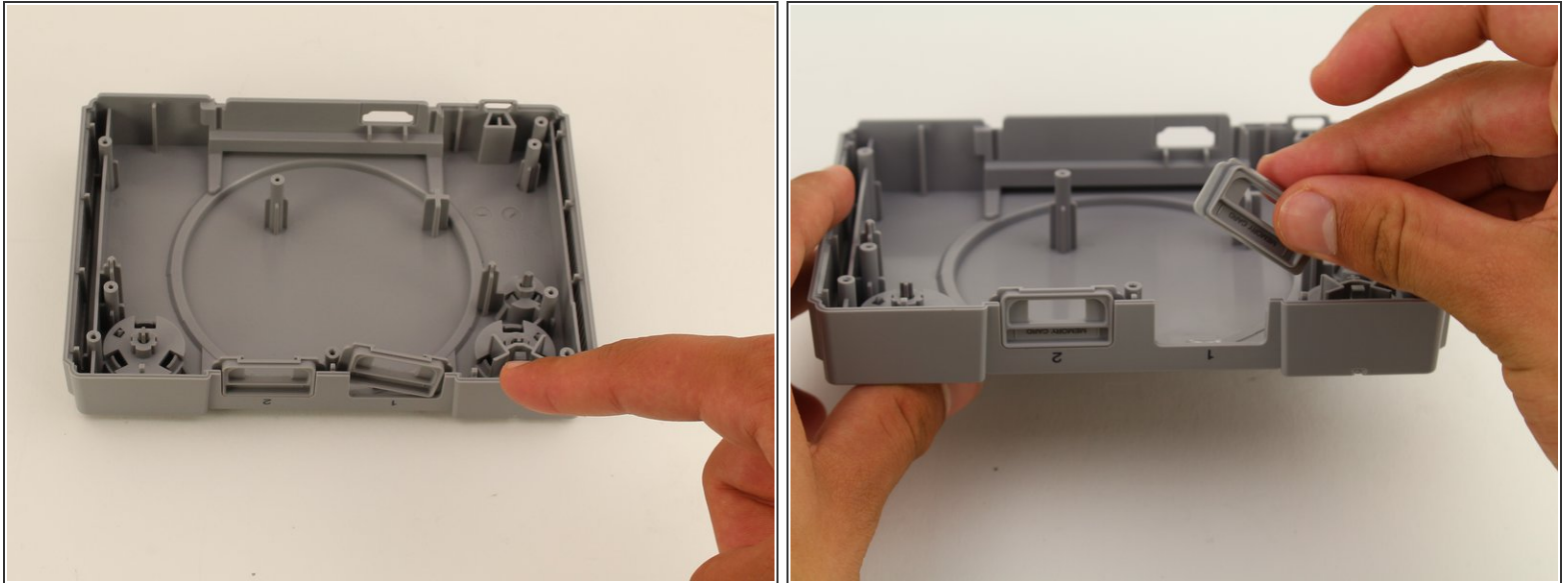
- Carefully remove the motherboard from the the rest of the console using your hands or the Jimmy tool.

Step 6



- ⓘ The motherboard is connected to its metal protective casing with sticky pads. No tools are required to remove it.
- Pull the metal casing off the motherboard.
- ⚠ Remember to be gentle when handling the motherboard.

Step 7 — Controller Port



- Identify the damaged or faulty controller port and simply use your fingers to remove.

To reassemble your device, follow these instructions in reverse order.