



# Playstation Classic Controller Cord Replacement

This guide will demonstrate how to replace the controller cord for a Playstation Classic Controller.

Written By: Maxwell Webb



## INTRODUCTION

This guide will demonstrate how to replace the controller cord for a Playstation Classic Controller. You should only need a Phillips #0 Screwdriver and optionally the Jimmy tool.



### TOOLS:

- [Jimmy](#) (1)
- [Phillips #0 Screwdriver](#) (1)



### PARTS:

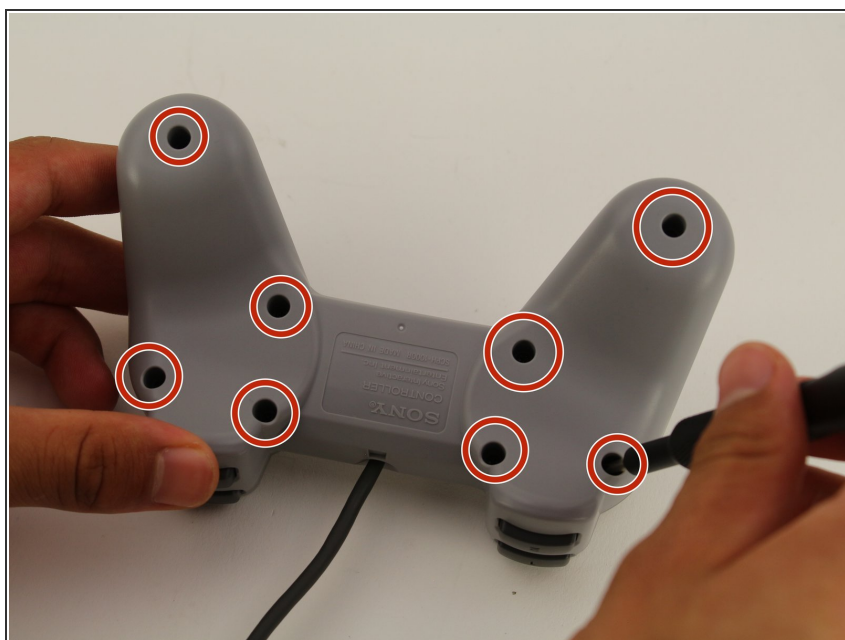
- [Micro USB to USB](#) (1)

## Step 1 — Controller Cord



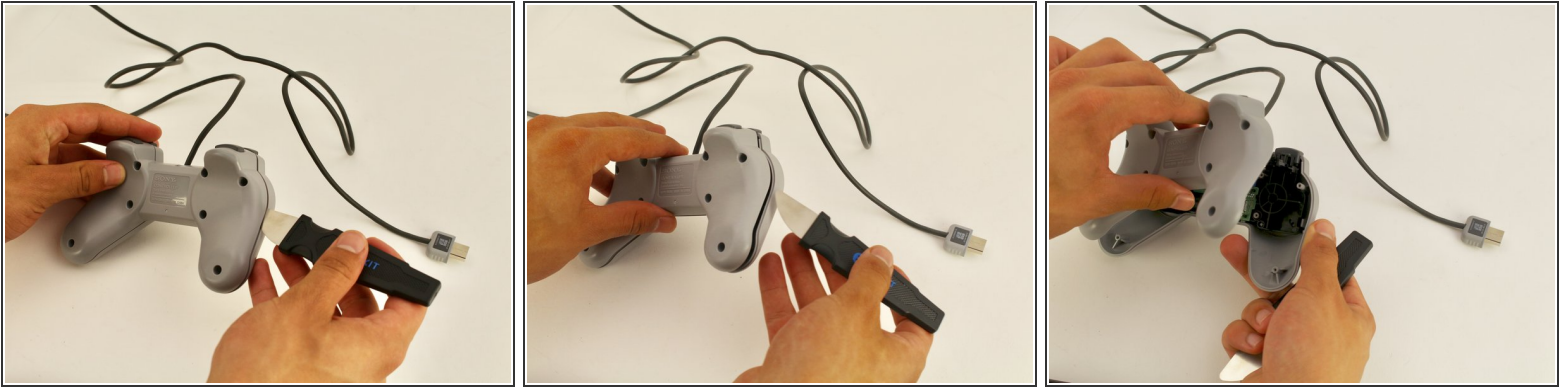
- Turn the controller over so that the screws are facing up.

## Step 2




- Use a small Phillips #0 screwdriver to remove the eight Xmm screws.
- ⓘ Make sure to store the screws in a safe place so they are not lost before reassembly.

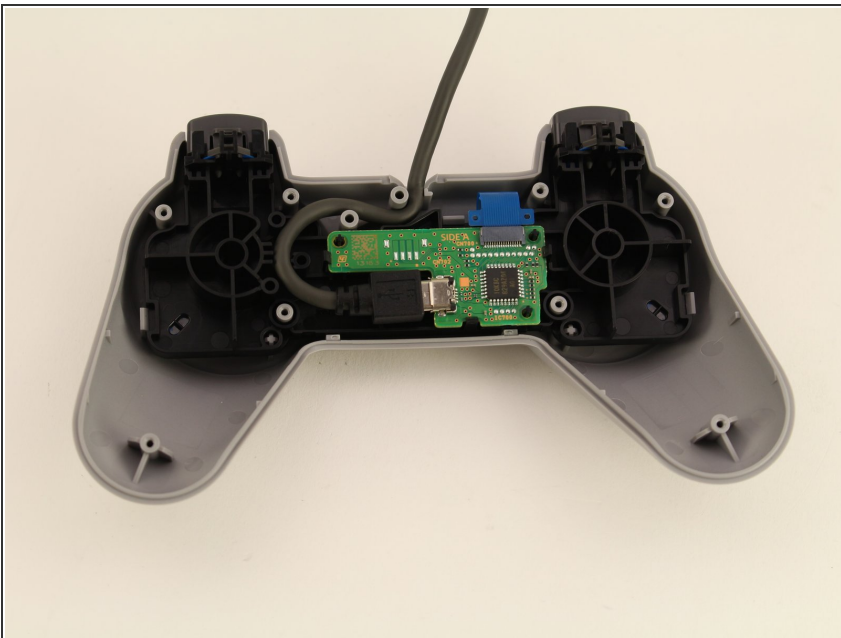
## Step 3



- Use the Jimmy tool to take the back part off and get into the controller.

 It shouldn't take too much force to remove the back part. Make sure all screws are taken out beforehand so you avoid hurting yourself or damaging the controller.

## Step 4



- You will notice that the controller cord is plugged into a Micro USB port on the controller motherboard.

## Step 5



- To unplug the cord from the controller motherboard, carefully take the cord out from in between the small pegs that it is nestled into.
- ⓘ When unplugging the cord, hold the controller so that no significant pressure is being applied to the motherboard that will damage it.

To reassemble your device, follow these instructions in reverse order.