



# Toshiba Encore 2 WT10-A Battery Replacement

Replace your current battery to optimize your Toshiba Encore's power.

Written By: Eileen Morales



## INTRODUCTION

The Toshiba Encore 2 WT10-A uses a rechargeable Bloc Batteries Li-ion battery pack, with model number PA5204U-1BRS, this repair guide will help you with replacing it. To replace this battery, use a spudger, you will not need to do any difficult steps, but open the back case of the tablet carefully along with taking care of the battery wires.



### TOOLS:

- [Metal Spudger](#) (1)
- [Spudger](#) (1)
- [iFixit Opening Tools](#) (1)



### PARTS:

- [Toshiba Encore 2 WT 10-A Battery](#) (1)

## Step 1 — Battery




- Start by holding your Toshiba tablet faced up.
- Flip the tablet from left to right so that you are able to see the back of the tablet.
- Hold tablet and be ready to continue onto the next steps.

## Step 2



- Insert a plastic opening tool in the back case of the tablet to free the clips.
- Begin to pull the tool up slightly and work your way around the tablet to free all the clips.

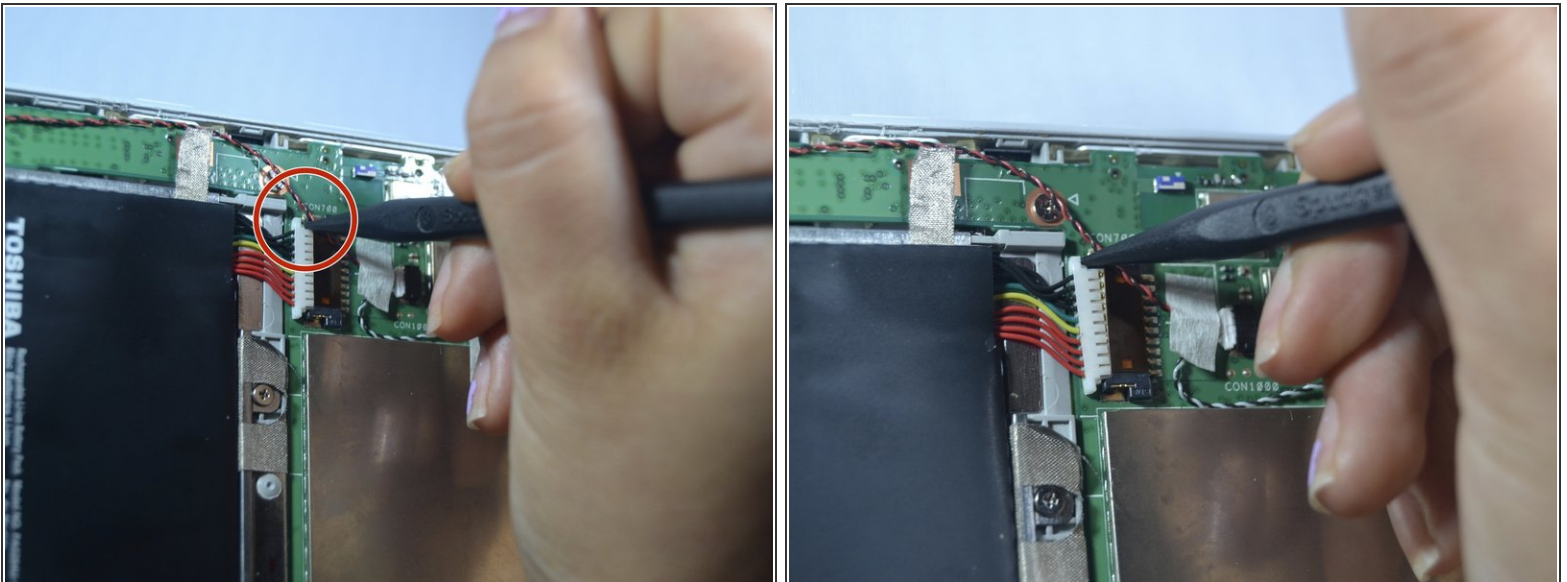
 Using a metal opening tool as shown in the photos has the potential to damage your device.

### Step 3



- Hold back lid with your right hand and keep lifting to remove the back lid.
- Pull the back lid from right to left and top to bottom.
- Once you disconnect the back lid, place lid aside.

### Step 4



- Use plastic spudger to remove the attached battery wires by pushing the plastic wire holder from right to left on top and bottom part of plastic holder.



## Step 5



- Start by using your left hand on the top left corner on the battery.
- Then, begin to lift and work your way around the battery.

## Step 6



- Remove the battery from the compartment.

To reassemble your device, follow these instructions in reverse order.