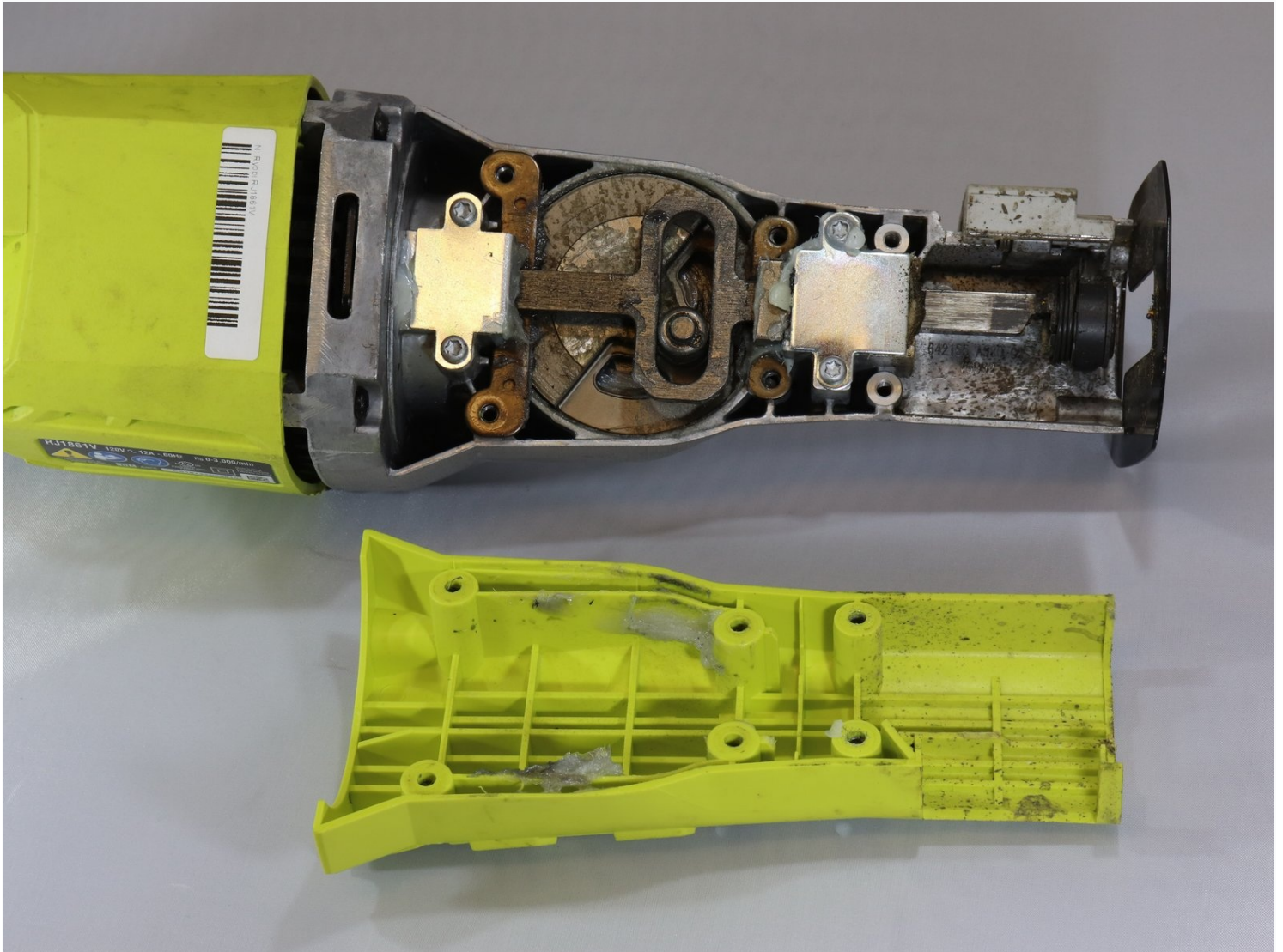




# Ryobi RJ1861V Saw Bar Assembly Replacement

This guide demonstrates how to remove and...

Written By: Ryan Quinlivan



# INTRODUCTION

This guide demonstrates how to remove and replace the saw bar assembly in a Ryobi RJ1861V reciprocating saw.

---

## TOOLS:

[T5 Torx Screwdriver](#) (1)

---

## Step 1 — Saw Bar Assembly



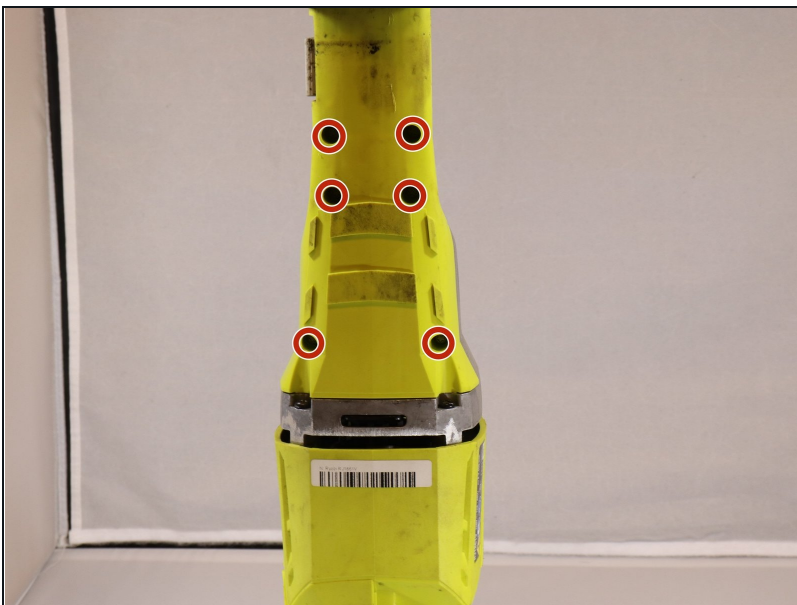
- Use a Torx T5 screwdriver to remove the single 8 mm screw securing the shoe.

## Step 2



- Remove the rubber sleeve.
  - ① You may have to use some force as it has a tight fit.

## Step 3



- Use a Torx T5 screwdriver to remove the six screws on the underside of the device.

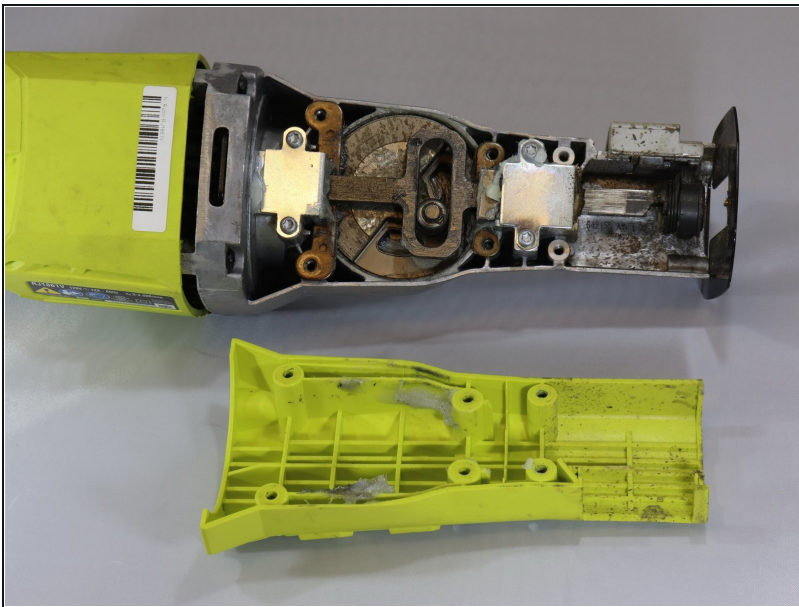


## Step 4



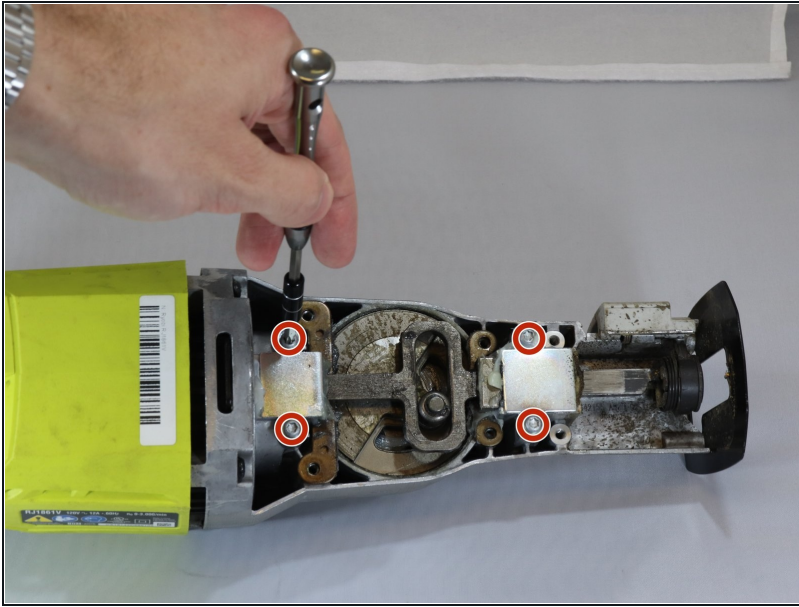
- Use a Torx T5 screwdriver to remove the four screws on the top of the gear case.
- ① There are two screws on each side of the device.

## Step 5



- Remove the backside panel.

## Step 6



- Unscrew the four T5 Torx screws that hold the assembly bar in place.

## Step 7



- Lift the assembly bar up and out of the chassis.

---

To reassemble your device, follow these instructions in reverse order.