



Panasonic KX-TG6641 Base Display Screen Replacement

Use this guide in order to correctly replace...

Written By: Joseph Byrne



INTRODUCTION

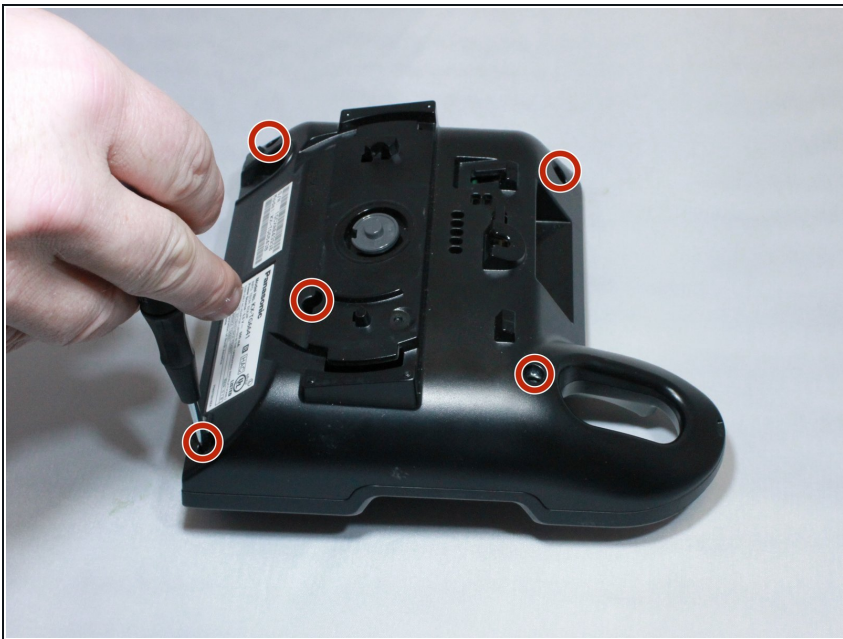
Use this guide in order to correctly replace the display screen on the charging base of the device. Display screens may become cracked or dysfunctional due to normal wear or accidents. By replacing the display, users will be able to operate features such as caller ID more easily.

TOOLS:

Phillips #0 Screwdriver (1)

iFixit Opening Tool (1)

Step 1 — Base Display Screen



- Use a Phillips #0 screwdriver to remove five screws from the back cover.

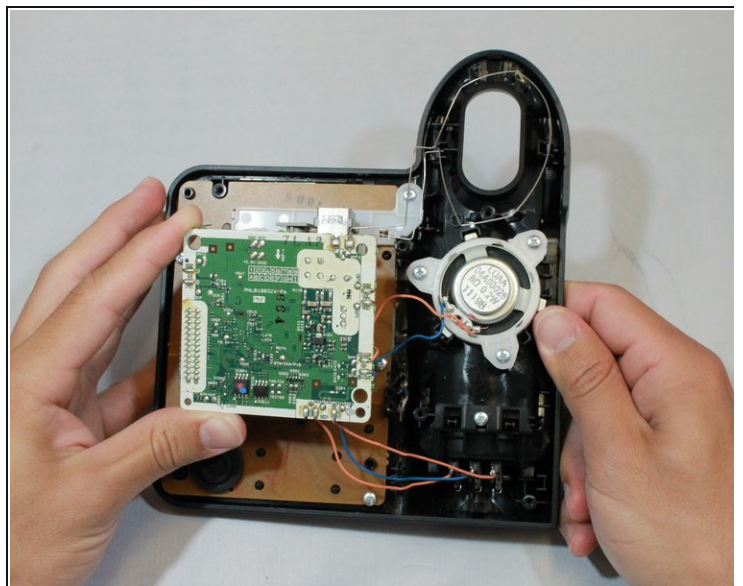
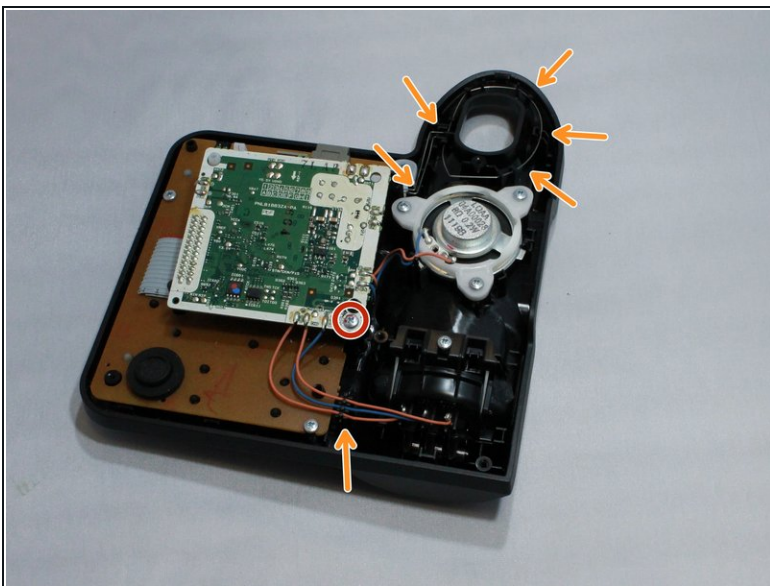
Step 2



- To remove the back cover, use an iFixit opening tool and wedge the tool in between the loosened back charging case and the front plate.

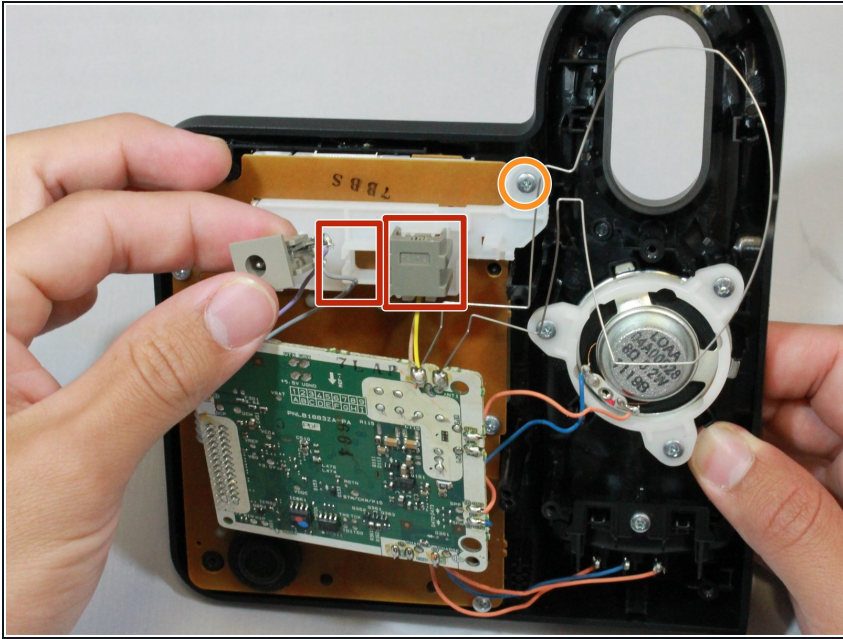
⚠ Wiggle to loosen, be careful to not pry too hard as it could cause damage.

Step 3



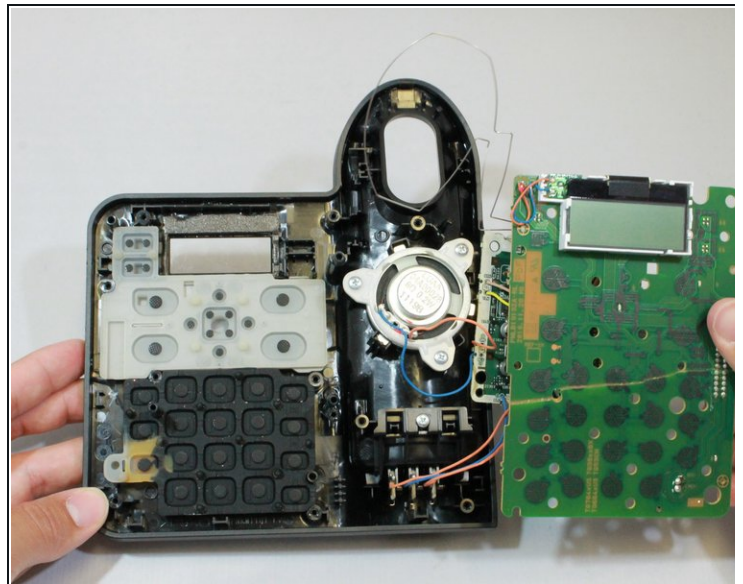
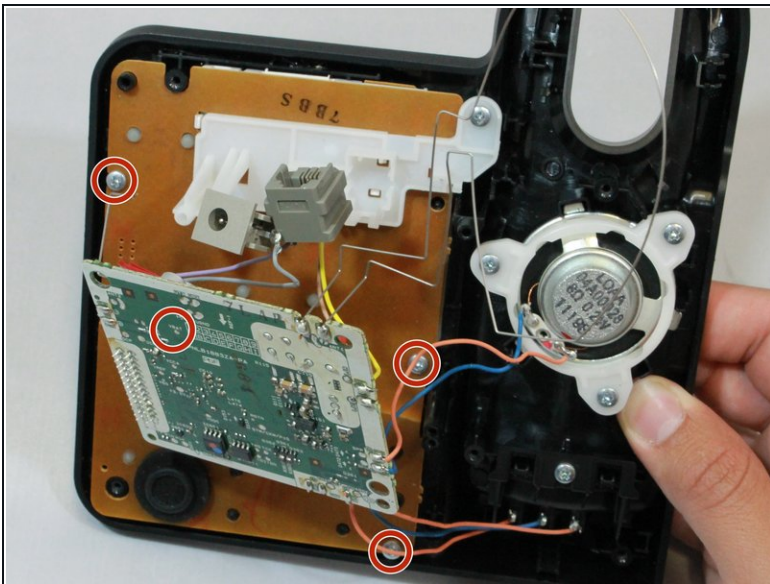
- To access the display screen, use a Phillips #0 screwdriver to remove the screw on the bottom right corner of the electrical panel.
- Unclip the wires hooked into the base.
- ⓘ It's not necessary to desolder the wires.

Step 4



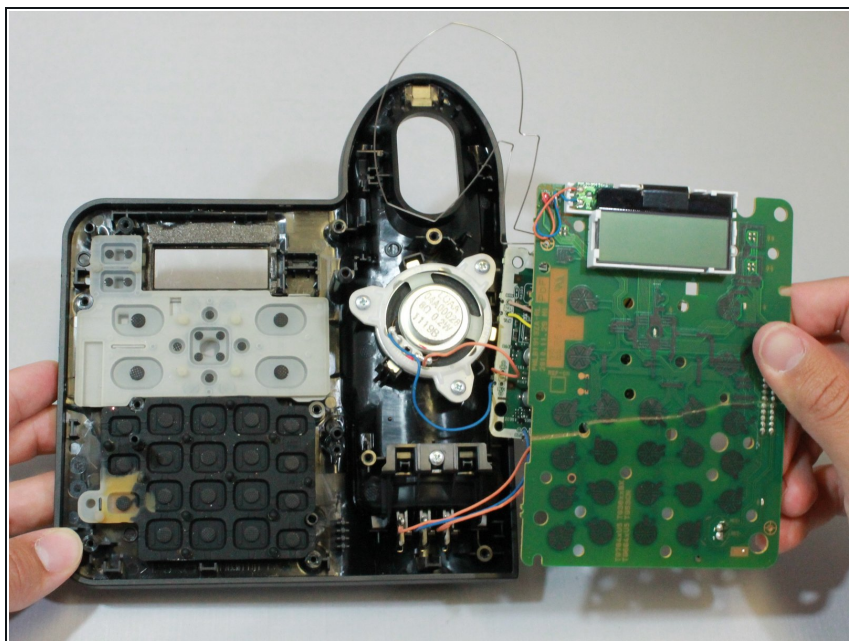
- Disconnect the two phone cable connectors.
- Use a Phillips #0 to remove the screw that is fixed in the plastic holder for the connectors.

Step 5



- Move the electrical panel to the side.
- Use a Phillips #0 to remove the four screws from the brown board and lift it to access the display screen.
- ⓘ Be aware, there is a screw under the control panel, it is indicated with the central red circle.

Step 6



- Remove the current display screen from the electric panel.
- ☑ Follow this process in reverse to replace the new display screen in its place.

To reassemble your device, follow these instructions in reverse order.