



Ryobi RJ1861V Motor Replacement

This replacement guide will show how to...

Written By: Adrian Williams



INTRODUCTION

This replacement guide will show how to replace the motor in the Ryobi RJ1861V.

TOOLS:

[Mako Driver Kit - 64 Precision Bits](#) (1)

Step 1 — Saw Bar Assembly



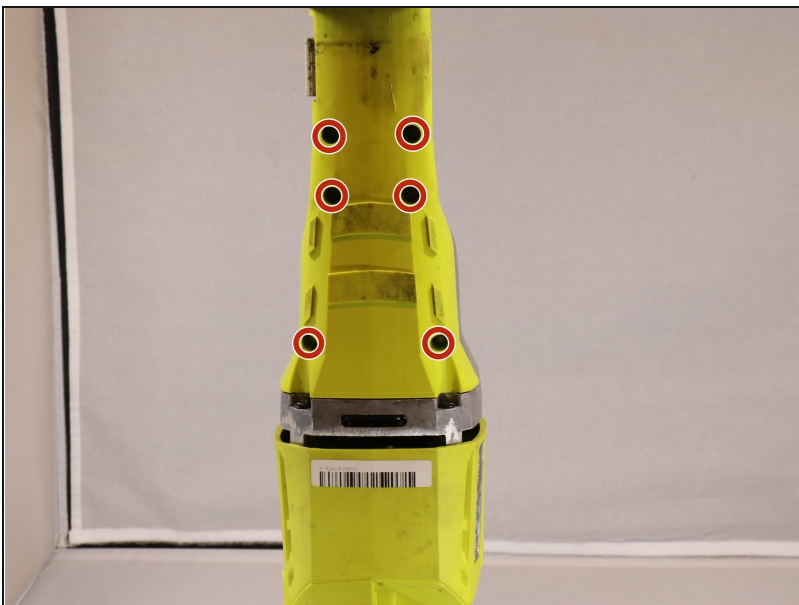
- Use a Torx T5 screwdriver to remove the single 8 mm screw securing the shoe.

Step 2



- Remove the rubber sleeve.
 - ① You may have to use some force as it has a tight fit.

Step 3



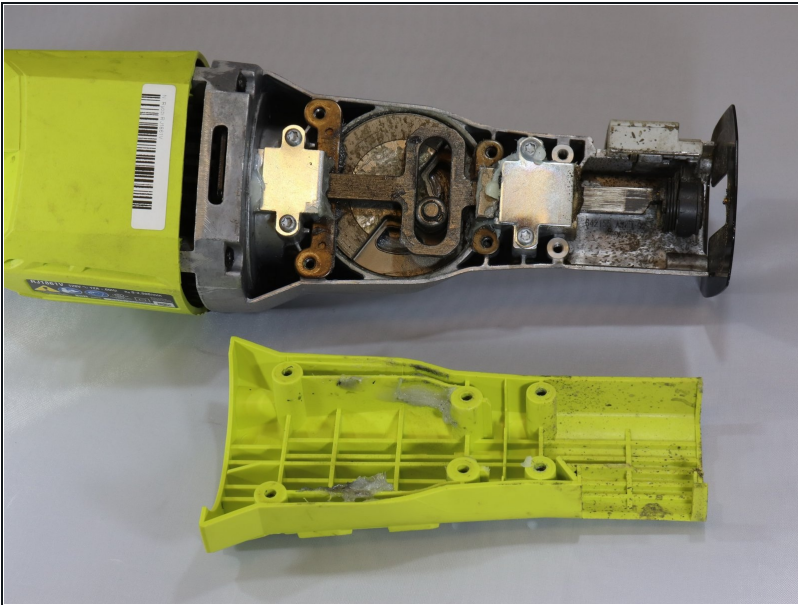
- Use a Torx T5 screwdriver to remove the six screws on the underside of the device.

Step 4



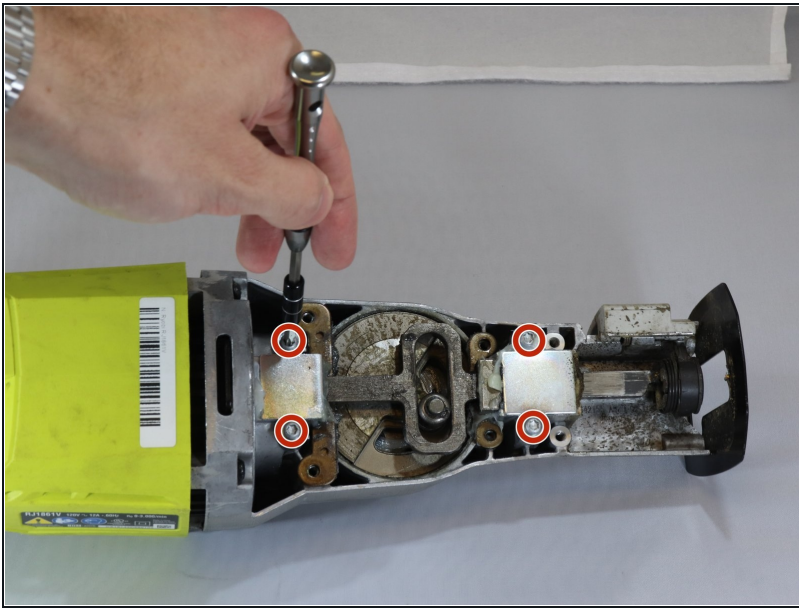
- Use a Torx T5 screwdriver to remove the four screws on the top of the gear case.
- ① There are two screws on each side of the device.

Step 5



- Remove the backside panel.

Step 6



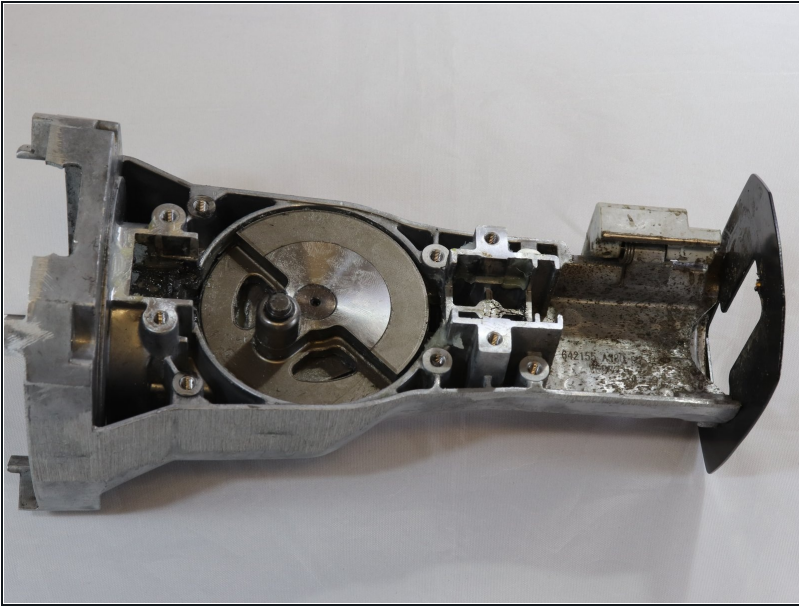
- Unscrew the four T5 Torx screws that hold the assembly bar in place.

Step 7



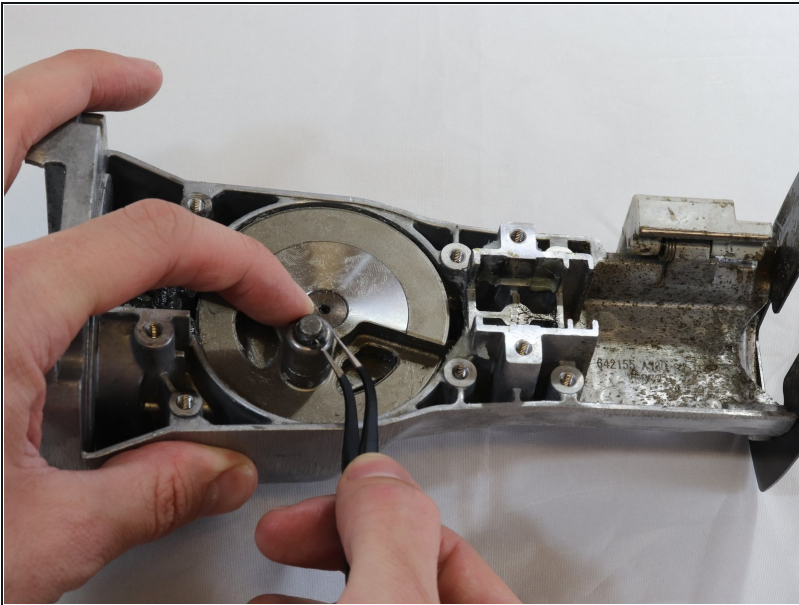
- Lift the assembly bar up and out of the chassis.

Step 8 — Assembly Bar Bearing



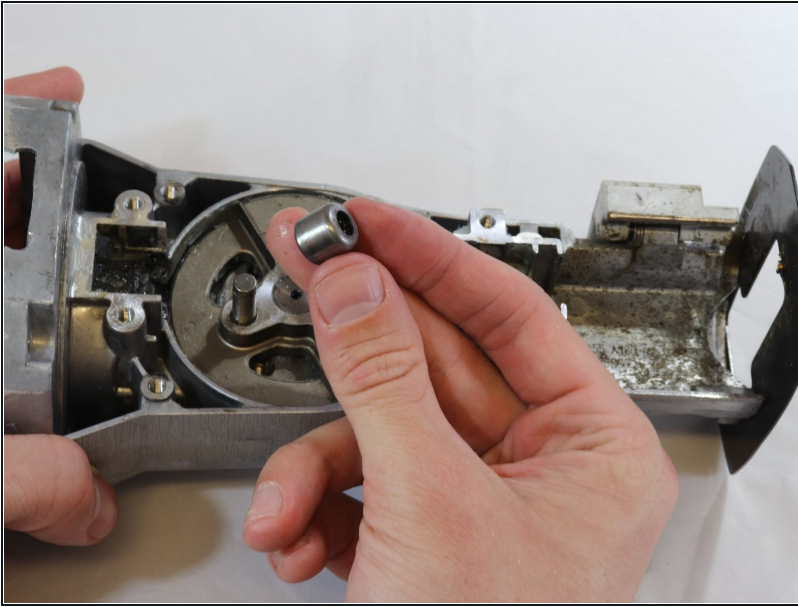
- Begin with the top of the device facing up.

Step 9



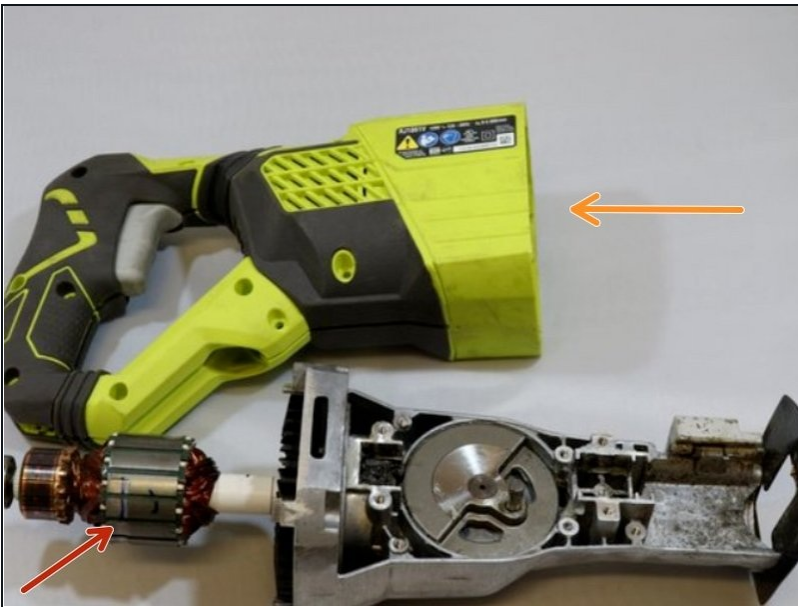
- Insert needle nose pliers to remove the retaining pin at the top of the bearing.

Step 10



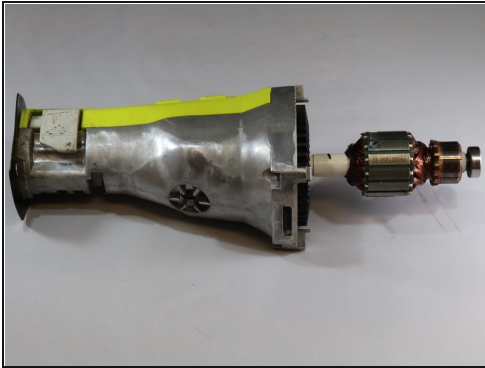
- Once the retaining pin has been removed, pull off the damaged bearing and insert a new one.

Step 11 — Motor



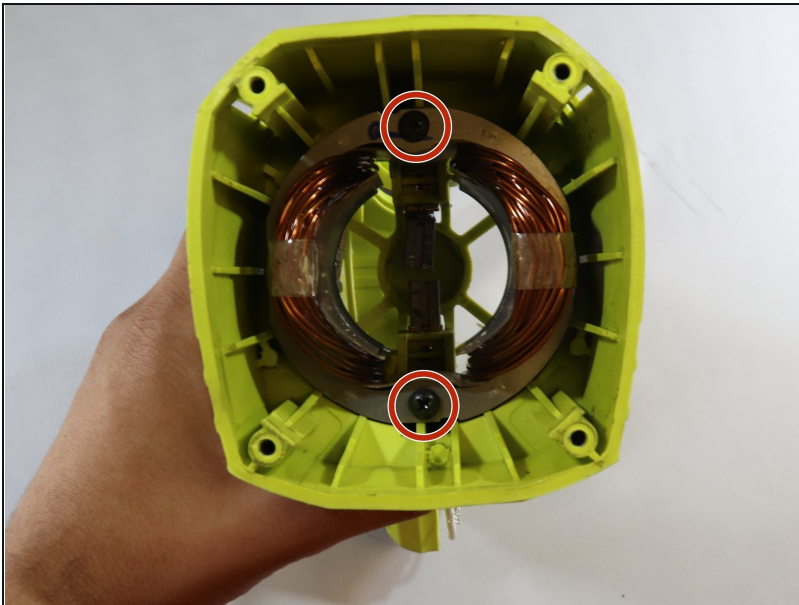
- The motor is divided into two sections, one attached to the gear case and one attached to the handle.
- This arrow indicates the section attached to the gear case.
- This arrow indicates the section attached to the handle.

Step 12



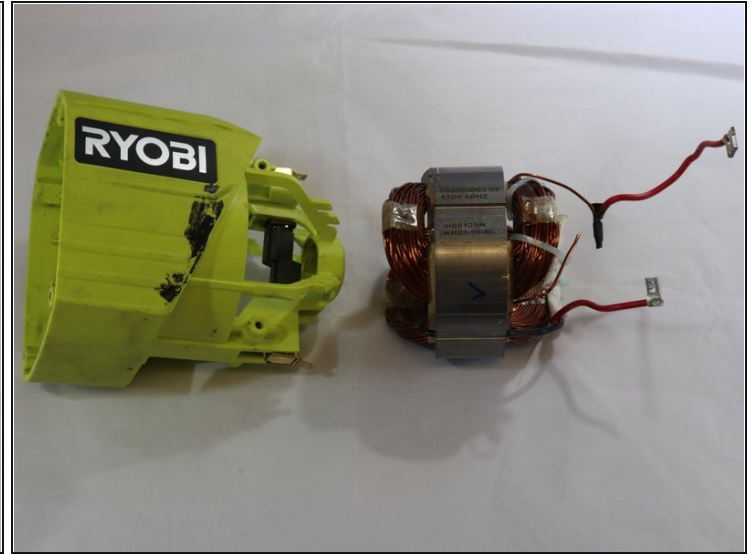
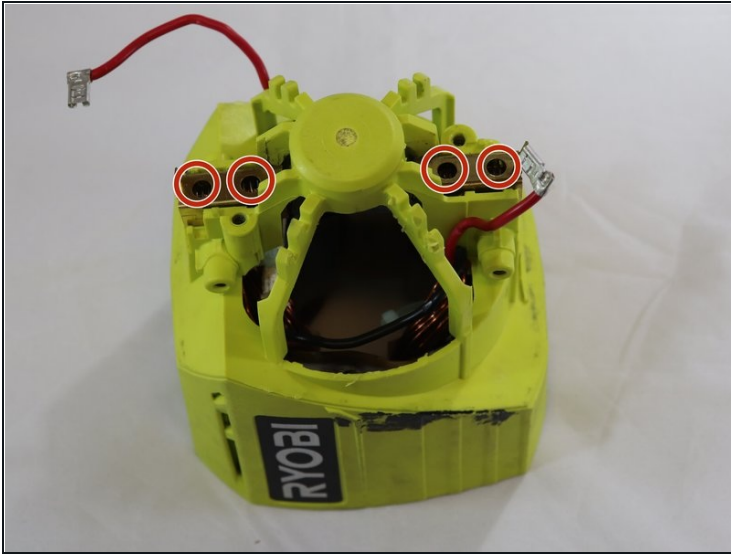
- Use a Torx T5 screwdriver to remove the four screws attaching the motor to the gear case.

Step 13



- Use a Torx T5 screwdriver to remove the two screws inside the motor housing of the handle.

Step 14



- Remove the four screws on the back of the housing with a Torx T5 screwdriver.
- Flip the housing over and pull the motor up and out of the housing.

To reassemble your device, follow these instructions in reverse order.