



# Ryobi RJ1861V Motor Housing Replacement

Written By: Ryan Quinlivan



## TOOLS:

T5 Torx Screwdriver (1)  
Tweezers (1)

## PARTS:

Motor Assembly Housing (1)


### Step 1 — Saw Bar Assembly



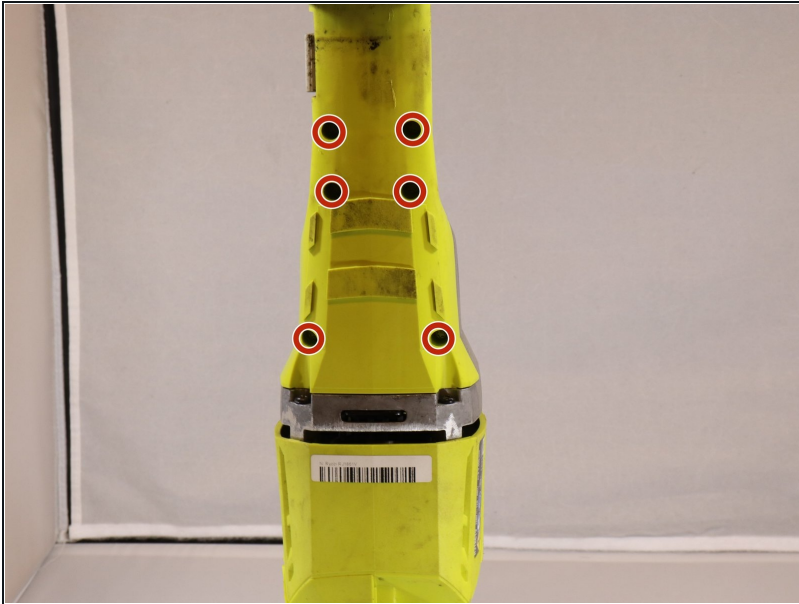
- Use a Torx T5 screwdriver to remove the single 8 mm screw securing the shoe.

### Step 2



- Remove the rubber sleeve.  
 You may have to use some force as it has a tight fit.

### Step 3



- Use a Torx T5 screwdriver to remove the six screws on the underside of the device.

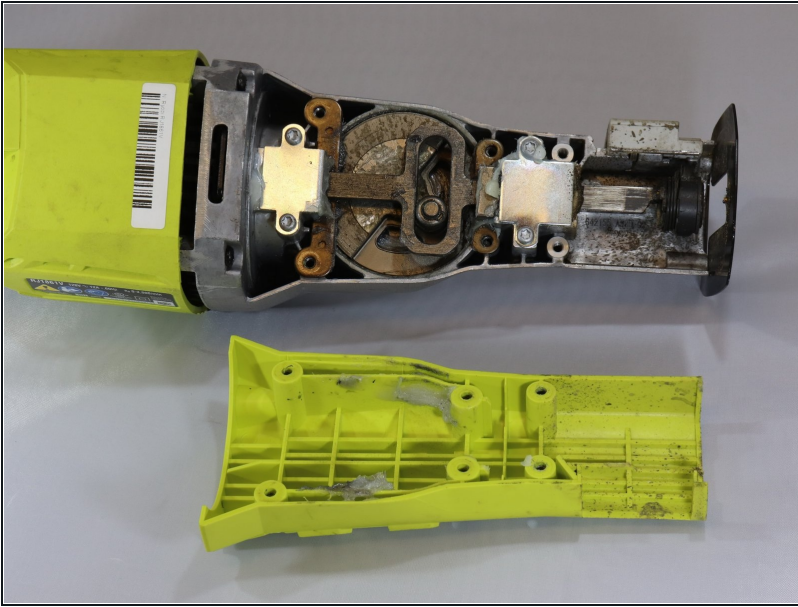
### Step 4



- Use a Torx T5 screwdriver to remove the four screws on the top of the gear case.
  - ① There are two screws on each side of the device.

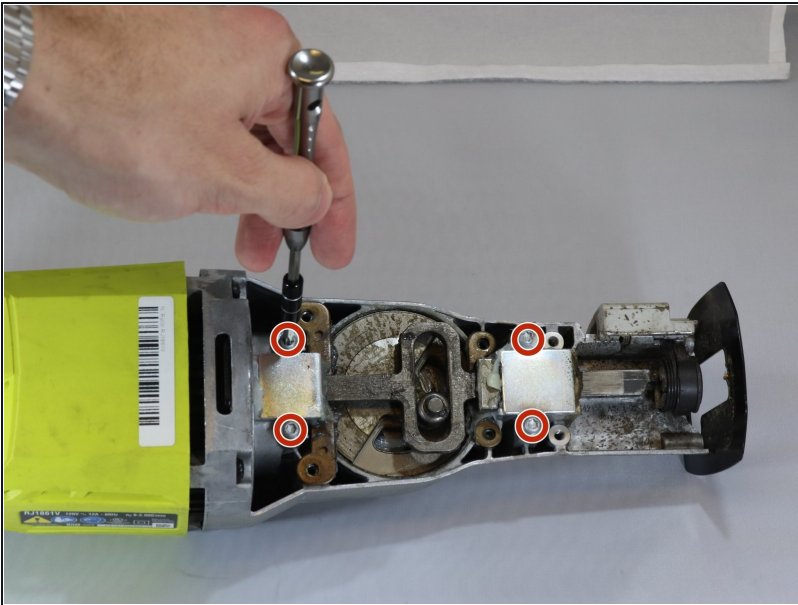


## Step 5



- Remove the backside panel.

## Step 6



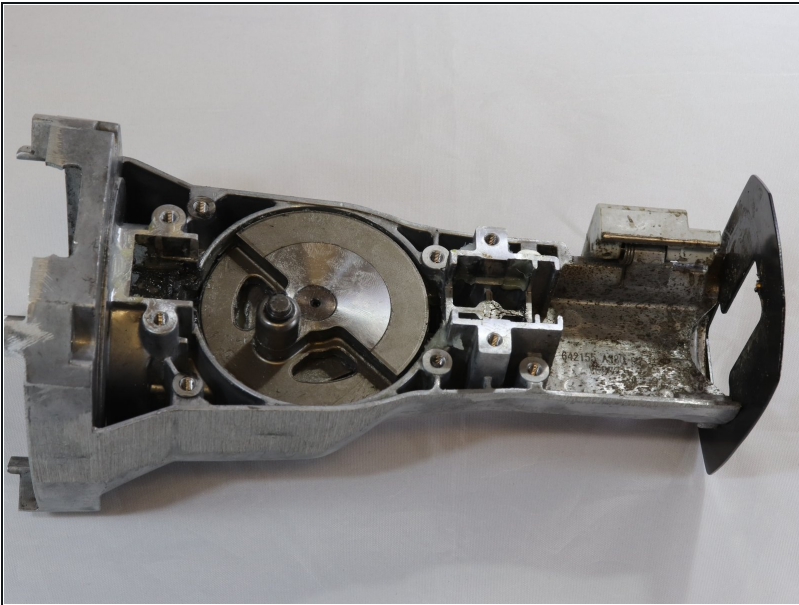
- Unscrew the four T5 Torx screws that hold the assembly bar in place.

## Step 7



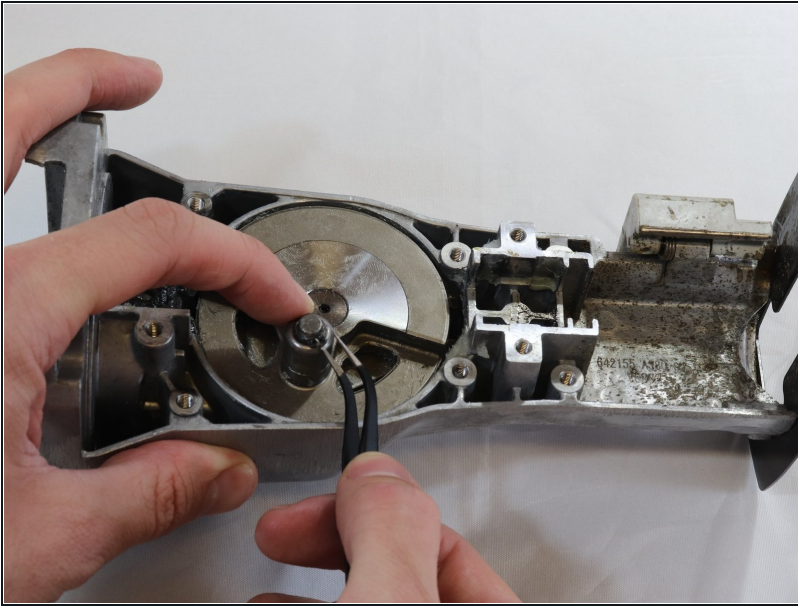
- Lift the assembly bar up and out of the chassis.

## Step 8 — Assembly Bar Bearing



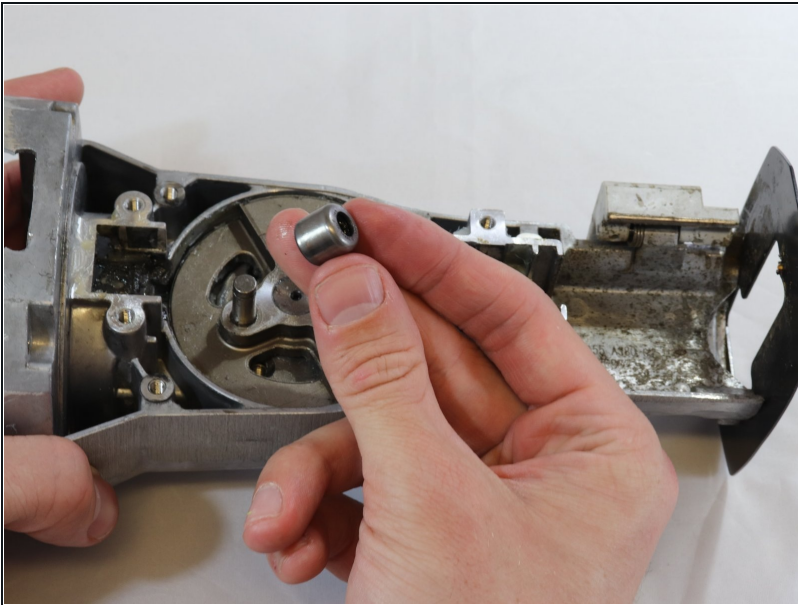
- Begin with the top of the device facing up.

## Step 9



- Insert needle nose pliers to remove the retaining pin at the top of the bearing.

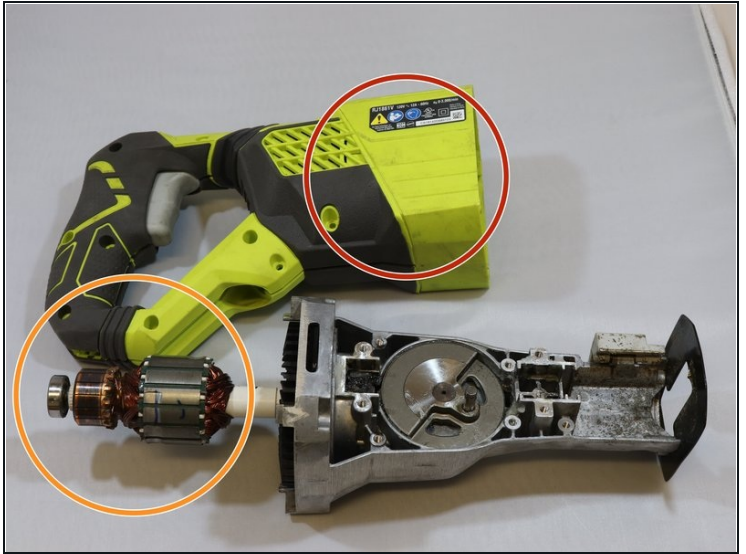
## Step 10



- Once the retaining pin has been removed, pull off the damaged bearing and insert a new one.



## Step 11 — Motor Housing

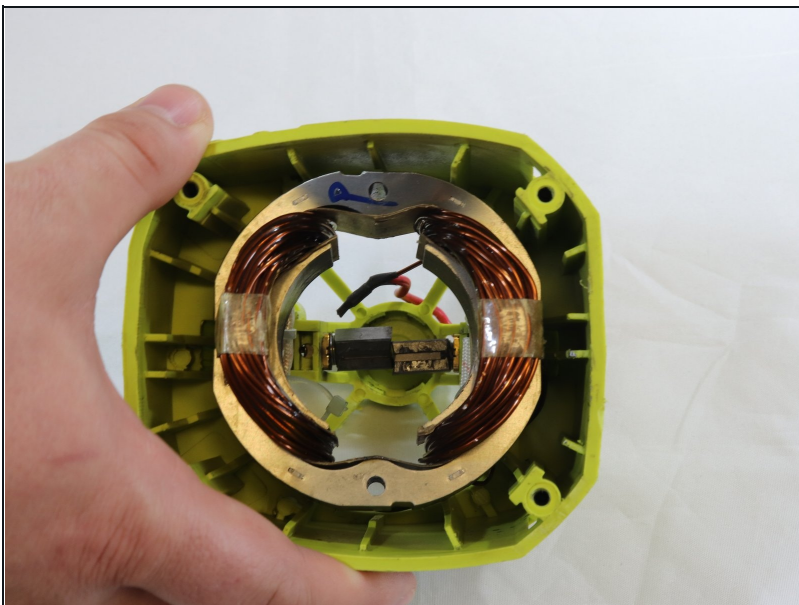


- After following prerequisite guides to get to the presented step, remove motor assembly from back housing.

⚠ Motor Assembly will be greasy

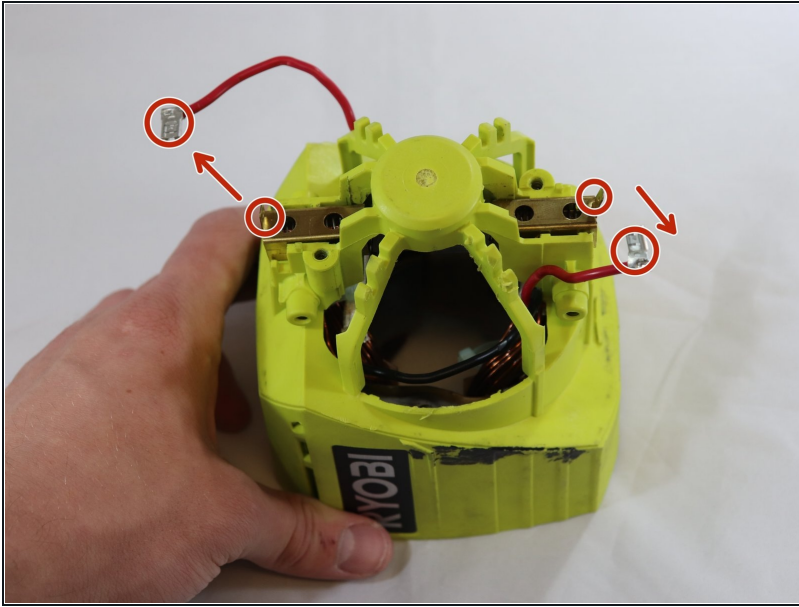
- Motor Assembly
- Motor Assembly Housing

## Step 12



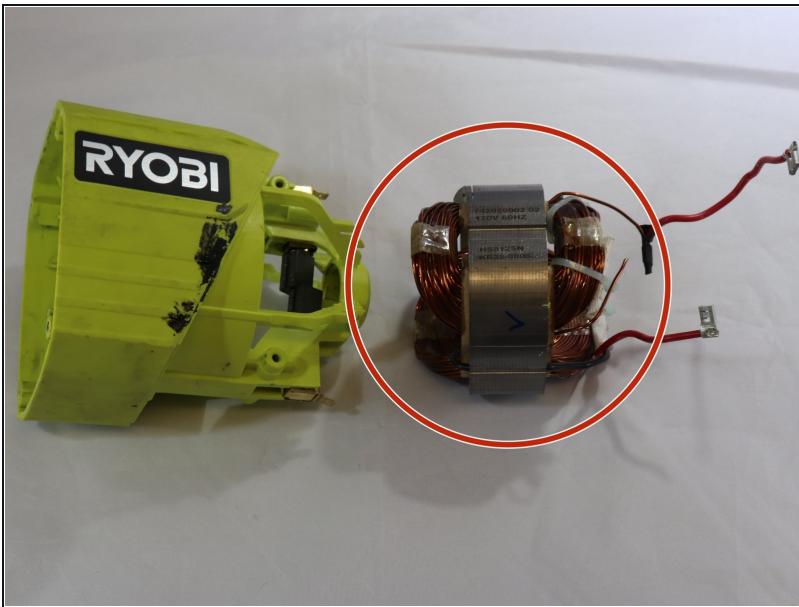
- Using pliers to grab onto the elongated aluminium exterior of the housing, begin to slowly wiggle the motor assembly housing until it comes loose.

### Step 13



- Detach red wires from base of the back of the housing .

### Step 14



- After the wires have been detached it should be relatively easy to remove and replace the Motor Assembly Housing
- Motor Assembly Housing

To reassemble your device, follow these instructions in reverse order.