



Toshiba Encore 2 WT10-A Power Button Replacement

This guide will help jammed or missing power button. To replace the power button you will also need to replace motherboard.

Written By: Ericka Castillo





TOOLS:

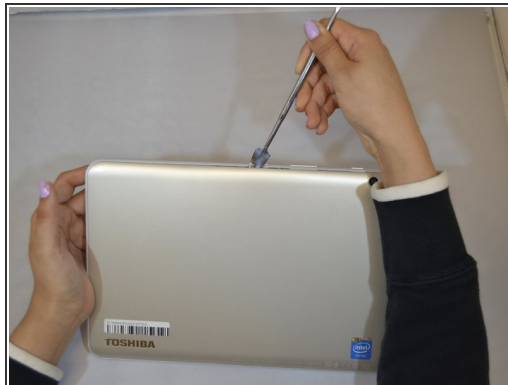
- [Metal Spudger](#) (1)
- [Spudger](#) (1)
- [iFixit Opening Tools](#) (1)
- [Phillips #00 Screwdriver](#) (1)
- [Tweezers](#) (1)
- [Magnetic Project Mat](#) (1)

Step 1 — Battery




- Start by holding your Toshiba tablet faced up.
- Flip the tablet from left to right so that you are able to see the back of the tablet.
- Hold tablet and be ready to continue onto the next steps.

Step 2



- Insert a plastic opening tool in the back case of the tablet to free the clips.
- Begin to pull the tool up slightly and work your way around the tablet to free all the clips.

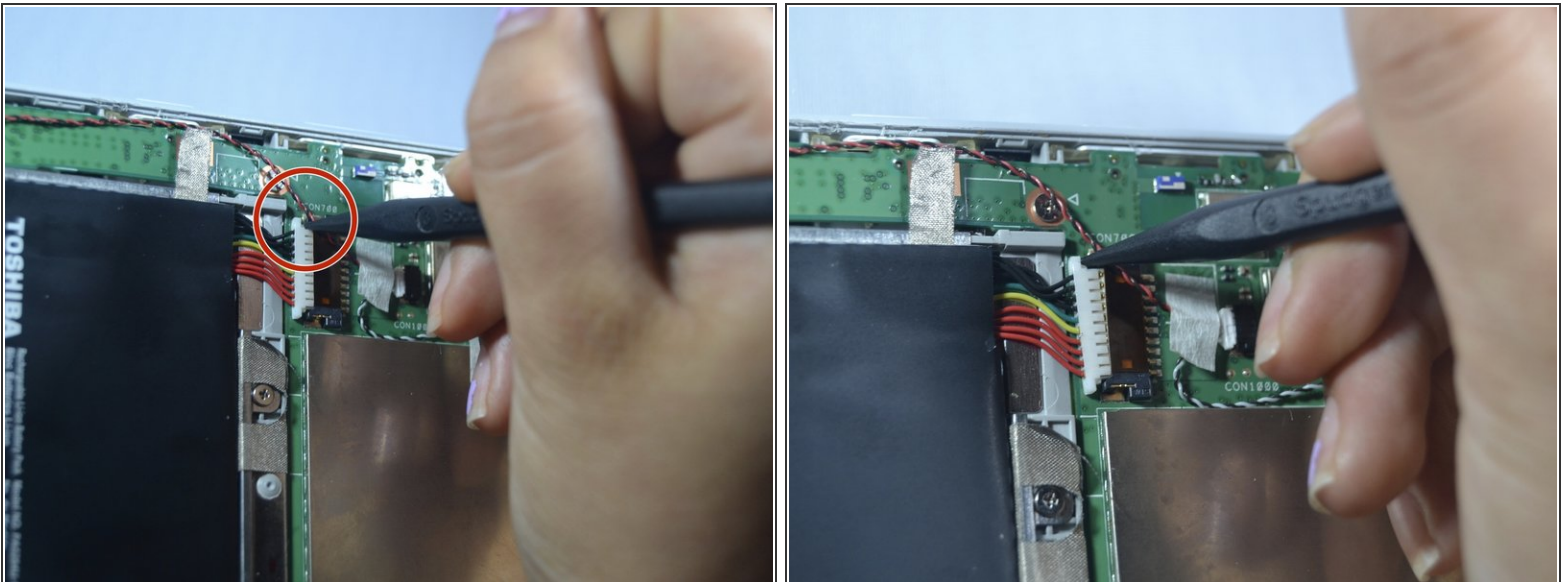
 Using a metal opening tool as shown in the photos has the potential to damage your device.

Step 3



- Hold back lid with your right hand and keep lifting to remove the back lid.
- Pull the back lid from right to left and top to bottom.
- Once you disconnect the back lid, place lid aside.

Step 4



- Use plastic spudger to remove the attached battery wires by pushing the plastic wire holder from right to left on top and bottom part of plastic holder.

Step 5



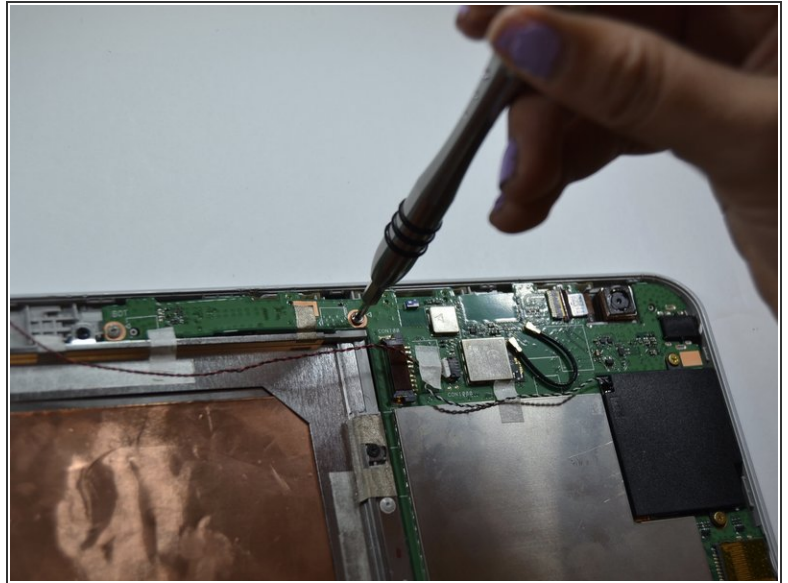
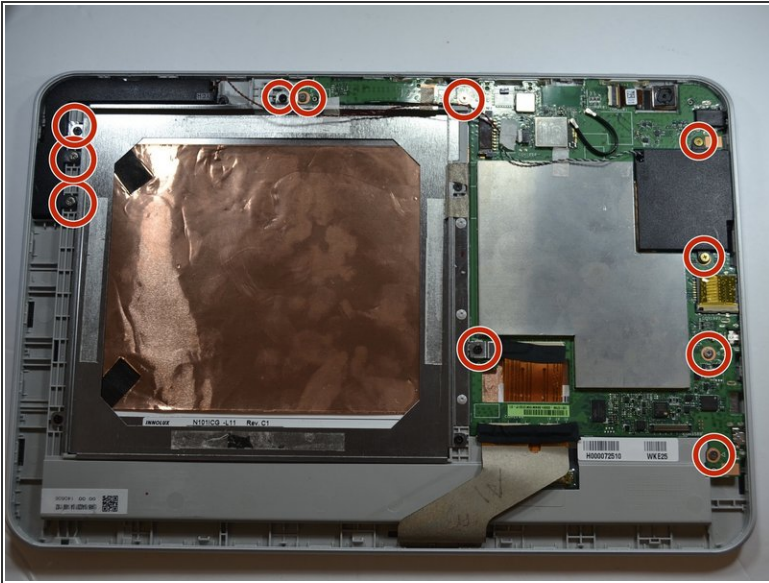
- Start by using your left hand on the top left corner on the battery.
- Then, begin to lift and work your way around the battery.

Step 6



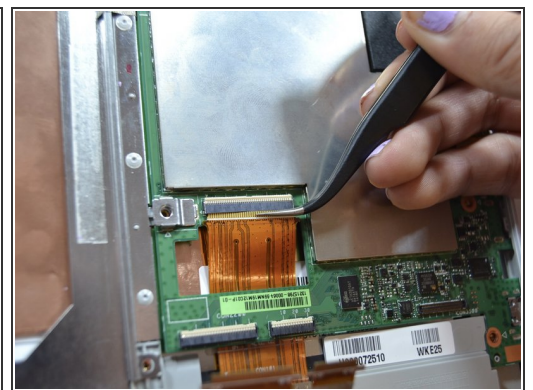
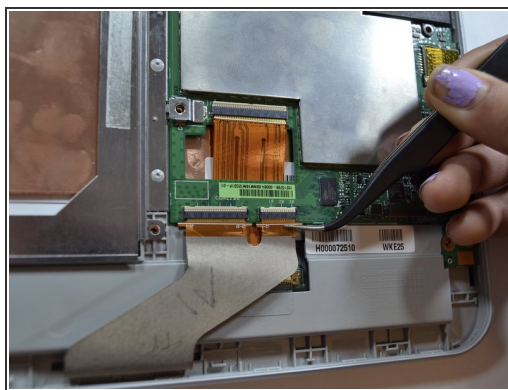
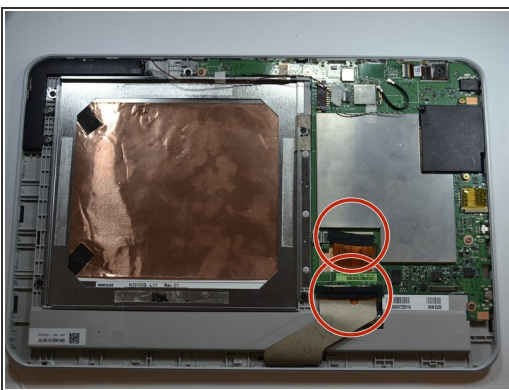
- Remove the battery from the compartment.

Step 7 — Motherboard



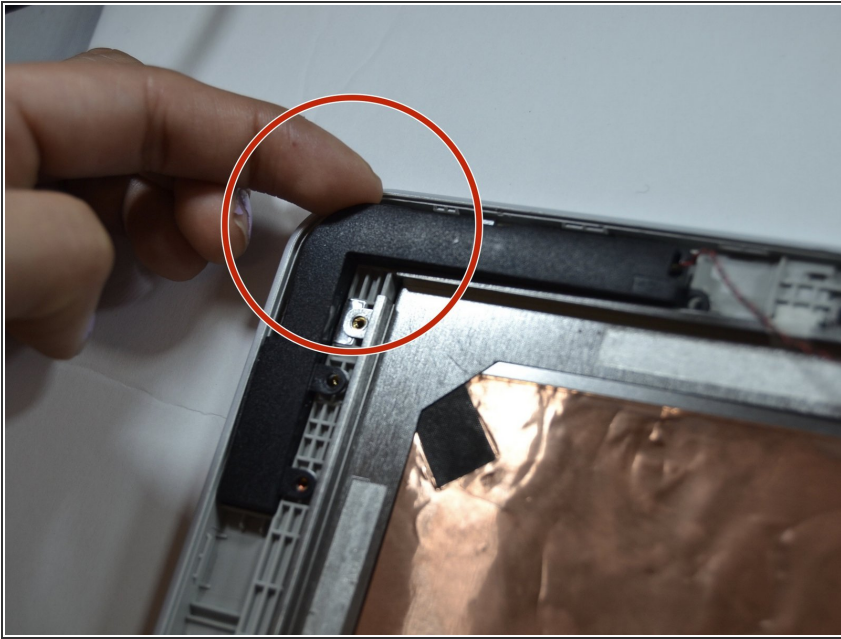
- Once you take off the back case and battery, set tablet screen faced down.
- Unscrew the 11 screws shown in the markups with a Phillips #00 screwdriver.
- BE AWARE: Screws are extremely small.

Step 8



- Before taking off motherboard, grab tweezers to peel off tape on the two ribbons marked on the picture.
- Once tape is removed, use the same tweezers to carefully pull the ribbons downwards to disconnect from motherboard.

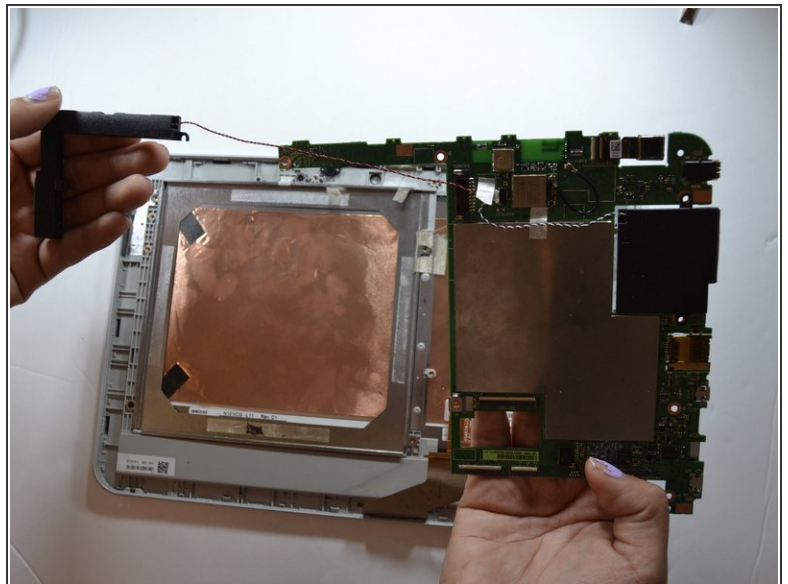
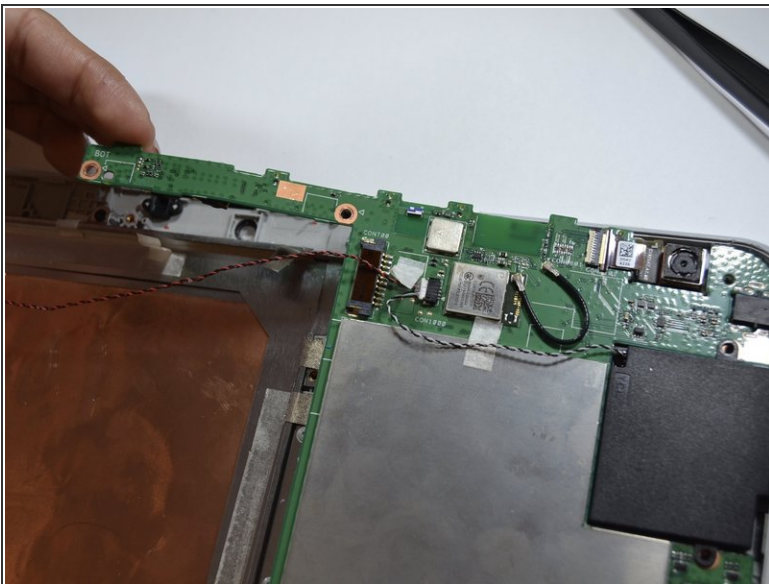
Step 9



- On the top left corner, pull the black compartment carefully upwards.

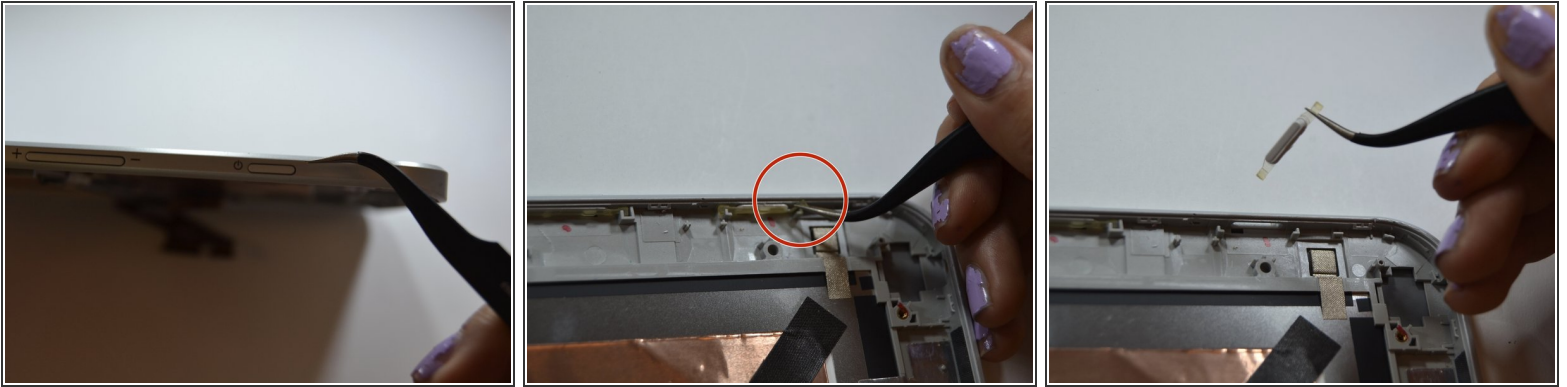
⚠ This component still has wires attached, so be careful not to sever the wires as you remove it.

Step 10



- Once black compartment is off, you will be prepared to disconnect motherboard.
- Carefully lift motherboard upwards with the black compartment.

Step 11 — Power Button



- Once motherboard is disconnected, grab tweezers.
- Start by locating the power button. Once it is located, with the tweezers, on the right top corner, start by lifting the plastic band upwards that is connected to the power button.
- Grab right end of the plastic band and lift upwards to disconnect from compartment

To reassemble your device, follow these instructions in reverse order.