



Removing the Jura IMPRESSA J5 brewing unit (brewgroup)

Removing the Jura IMPRESSA J5 brewing unit (brewgroup)

Written By: VauWeh



INTRODUCTION

These instructions tell you how to extract the brewing unit.



TOOLS:

- [T15 Torx Screwdriver](#) (1)
-

Step 1 — Jura Capresso IMPRESSA J5 opening procedure



 **Unplug the power cord!**

- Remove the water tank and the drip tray. Remove all coffee beans from the storage container.

Step 2



- Flip open the lid of the bean compartment.
- Unscrew the two slotted screws inside the bean compartment. The screws have a rubber washer and will not come out completely.
- Remove the bean compartment.

Step 3



- The top cover is fastened with oval head screws. Unscrew them.
- i** These screws have an oval head that makes them look like rivets (picture 2). You need to use a special bit - [also available at iFixit](#) - for their removal. [Here a DIY guide](#). If the right bit is not available, it could be done with a pair of needle nose pliers. Jura wants to keep us out of our own machines!!!

Step 4



- Also remove the two oval head screws underneath the ground coffee compartment lid.

Step 5



- Now you can pry up the top cover all around.
- Remove the top cover. This often requires a little force.
- ☑ Use plastic tools to avoid scratching your device.

Step 6



- Turn the device with the back facing you.
- Turn the Jura label a few degrees counterclockwise. If it's hard to do, use a small suction cup.
- Remove the Jura label.

Step 7



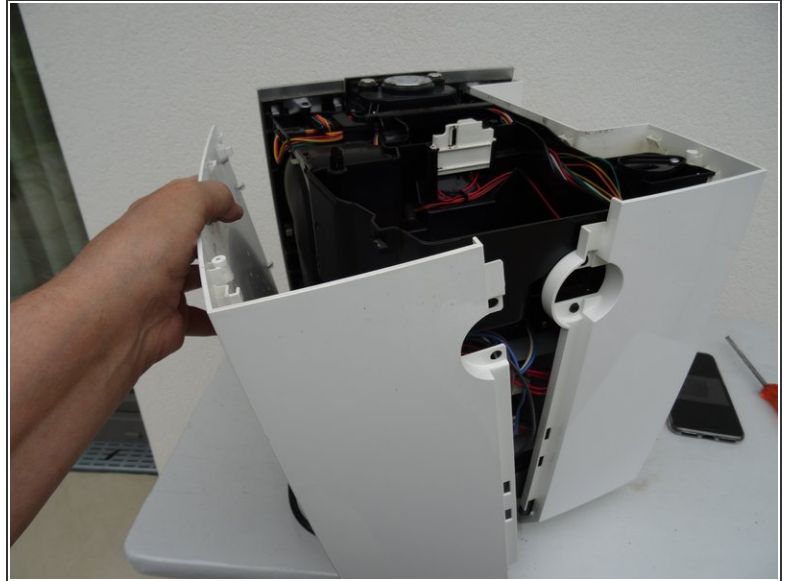
- Underneath the label you will find two Torx T15 screws. Remove them.
- Carefully pull the top of the chrome cover slightly outwards, then push it down and put it aside.

Step 8



- Remove the Torx T15 screw on the side panel with the water tank.

Step 9



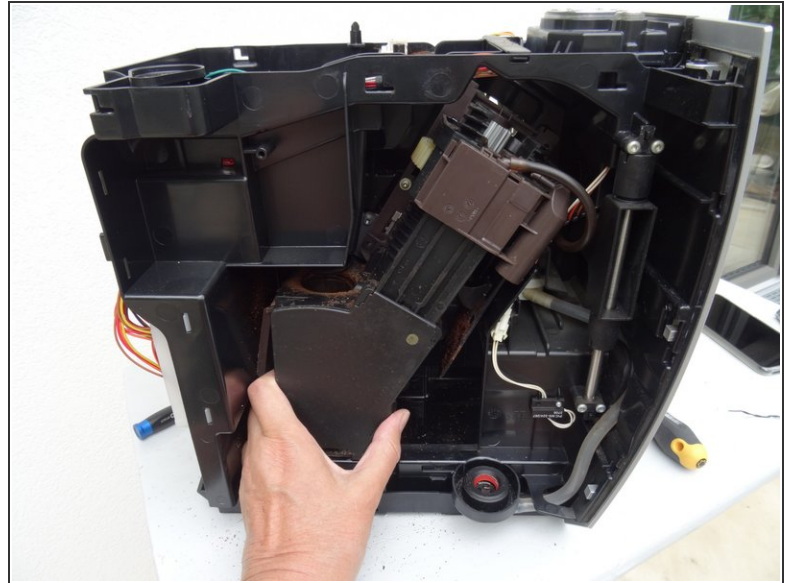
- Pull the right side panel slightly towards the back.
- Remove the side panel.


Step 10



- Pull the left side panel slightly towards the back and remove it.

Step 11 — Removing the Jura IMPRESSA J5 brewing unit (brewgroup)



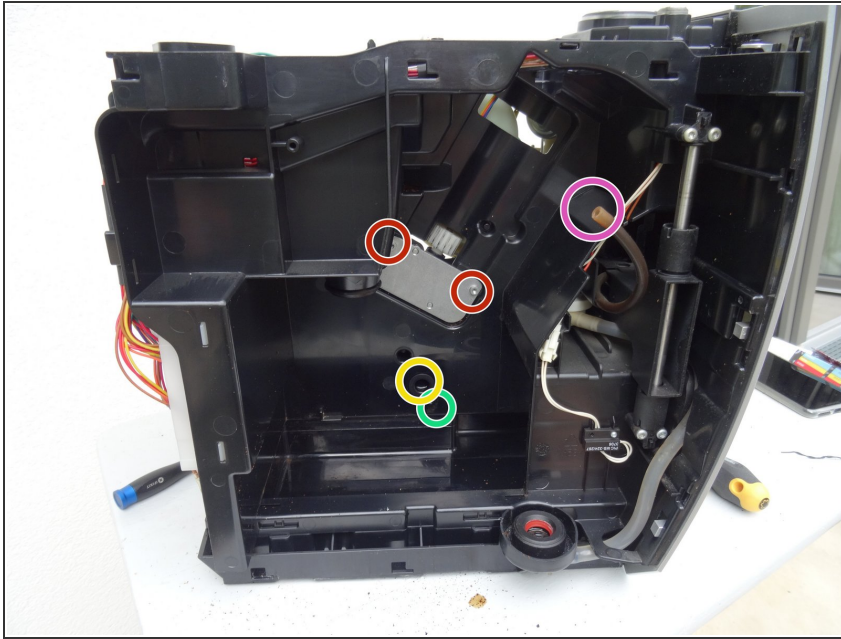
-  The brewing unit is on the left side of the machine.

Step 12



- The cover over the brewing unit is only lightly gripped. Lift it out.

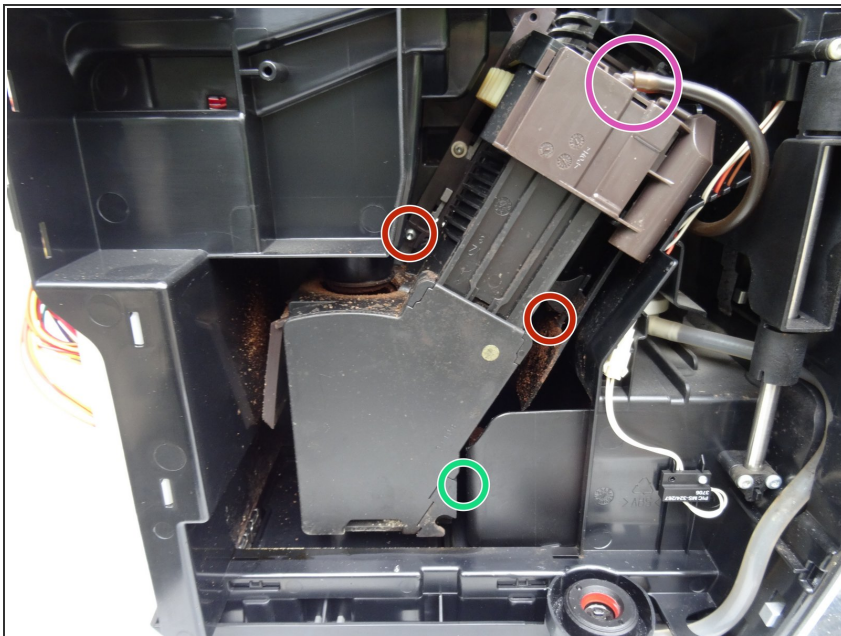
Step 13



i In this image the brewing unit has been removed already to show you how it is connected.

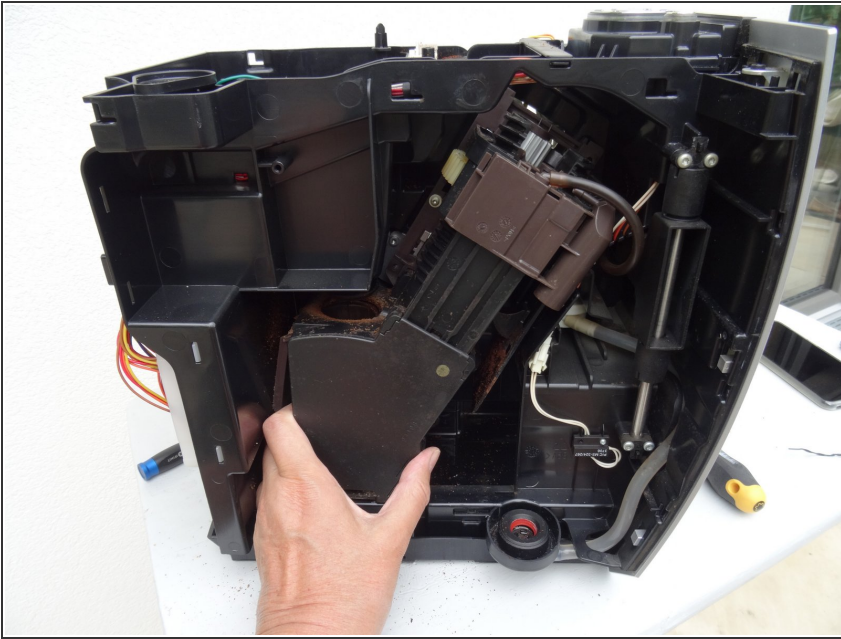
- Two Torx T15 machine screws
- One Torx T15 screw
- The hot water connection is plugged in.
- The hose for the coffee spout is connected above.

Step 14



- Unscrew the two Torx T15 machine screws.
- Unscrew the lower Torx T15 screw near the hot water inlet pipe.
- Pull off the coffee dispensing pipe.

Step 15



- First pull the brewing unit outward slightly at the base, lift it out with a downward motion.
- ⓘ If you want to disassemble the brewing unit for maintenance or cleaning, use [these](#) oder [these](#) instructions.

Work your way through the instructions in reverse to re-assemble the device.