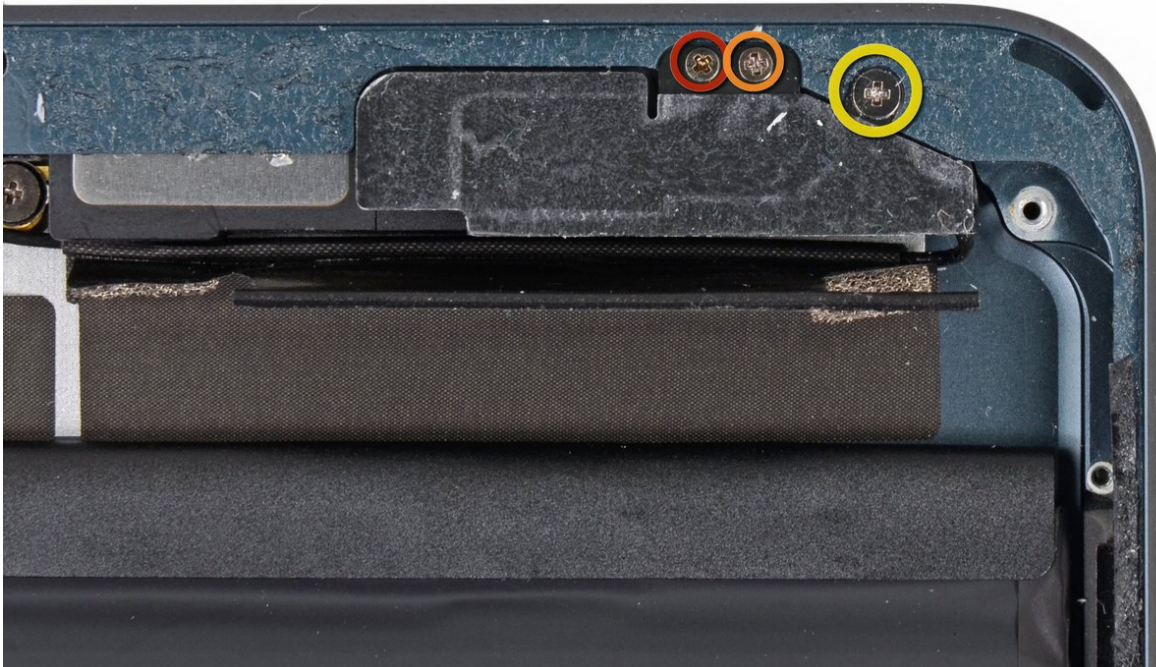




iPad Mini CDMA Wi-Fi/Bluetooth Antenna Replacement

Prereq only (for speaker), does not remove antenna, battery is in.

Written By: Walter Galan



INTRODUCTION

Prereq only, does not remove antenna, battery is in.



TOOLS:

- [Phillips #00 Screwdriver](#) (1)
 - [Spudger](#) (1)
-

Step 1 — Wi-Fi/Bluetooth Antenna



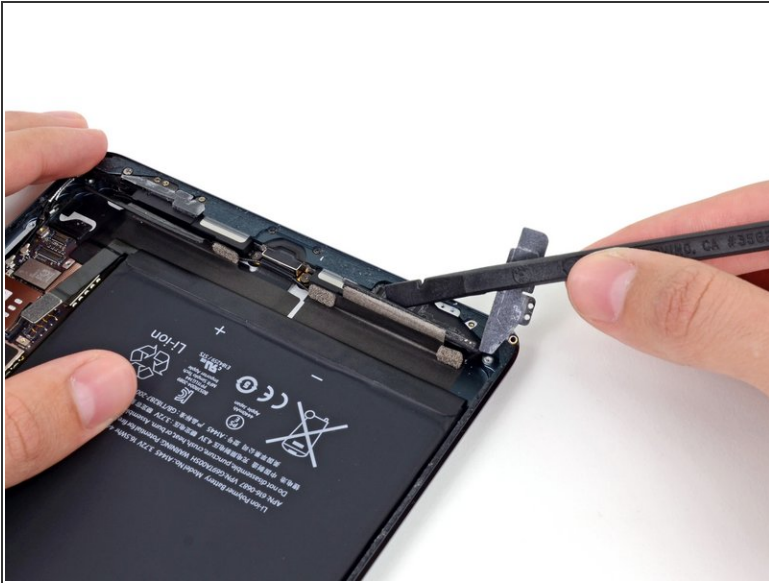
- Remove the following three screws securing the bottom left antenna to the rear case:
 - One 1.2 mm Phillips #00
 - One 1.1 mm Phillips #00
 - One 2.5 mm Phillips #00

Step 2



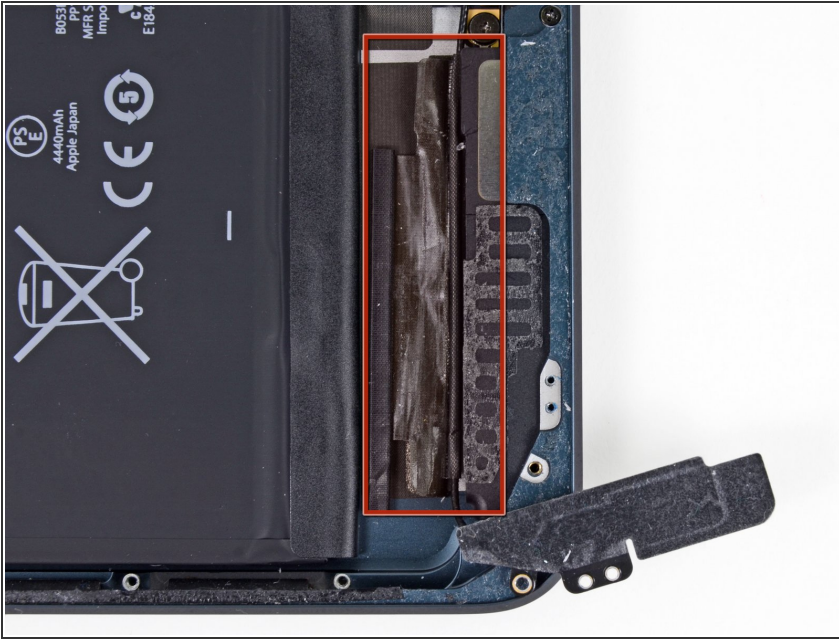
- Use the flat end of a spudger to loosen the foam adhesive securing the Wi-Fi antenna to the left speaker.

Step 3



- Use the flat end of a spudger to fold the left-hand wide piece of tape away from the left speaker.

Step 4



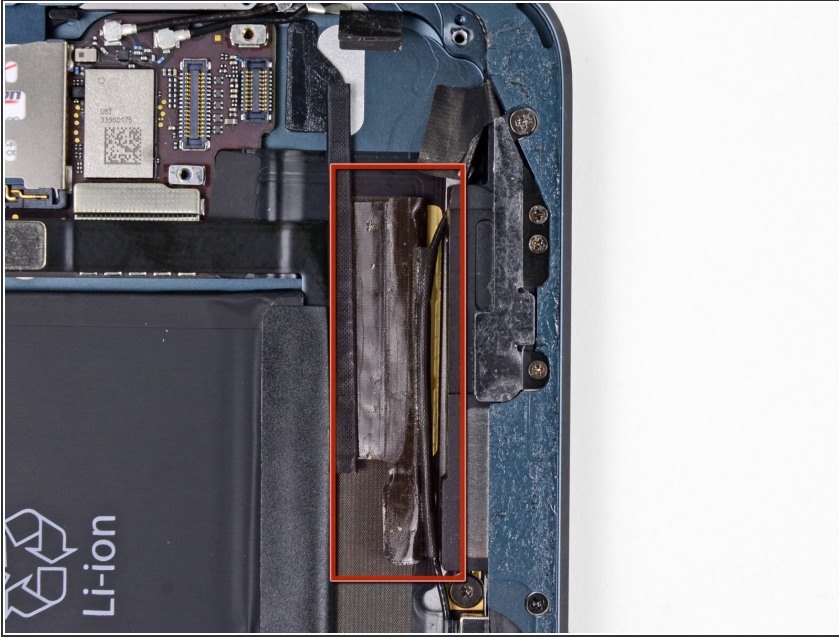
- ✦ The antenna cable is secured with two pieces of tape: the wide tape that continues onto the rear case, and its own small piece of tape that is covered by the wide tape.
- i In the next steps you'll be separating the wide tape from the antenna cable's tape with the tip of a spudger in the gap between the two pieces.

Step 5



- Pull the wide tape toward the top of the iPad, applying constant force to release it from the antenna cable between it and the speaker.
- Slide the tip of a spudger through the gap between the wide tape and the antenna cable, to break the adhesive connecting the two.
- Continue pulling the wide tape until it is no longer covering the antenna cable.

Step 6



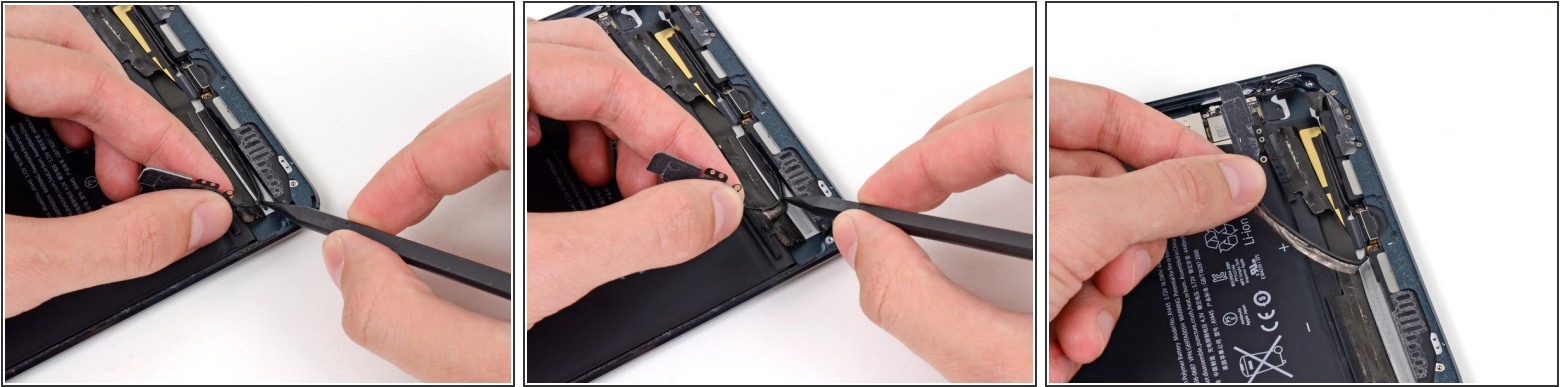
- The right-hand wide piece of tape covers the antenna cable in the same way as the left.

Step 7



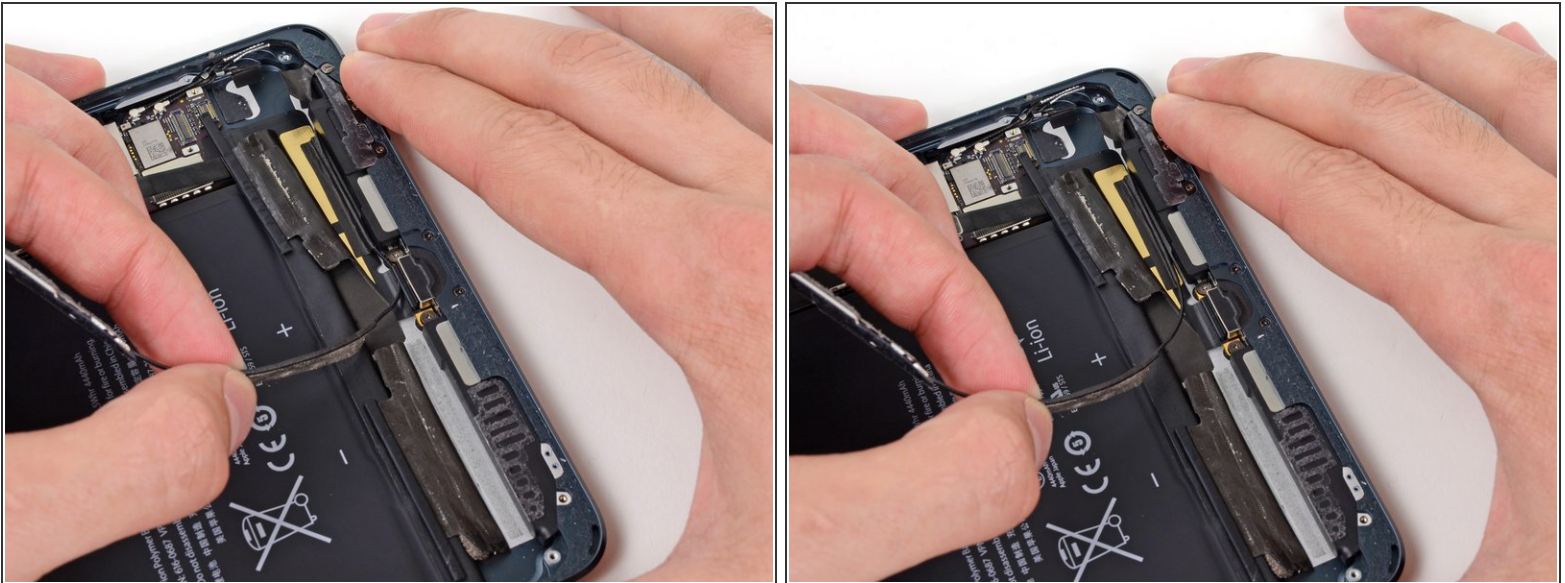
- Pull the wide tape toward the top of the iPad, applying constant force to release it from the antenna cable between it and the speaker.
- Slide the tip of a spudger through the gap between the wide tape and the antenna cable, to release the adhesive connecting the two.
- Continue pulling the wide tape until it is no longer covering the antenna cable.

Step 8



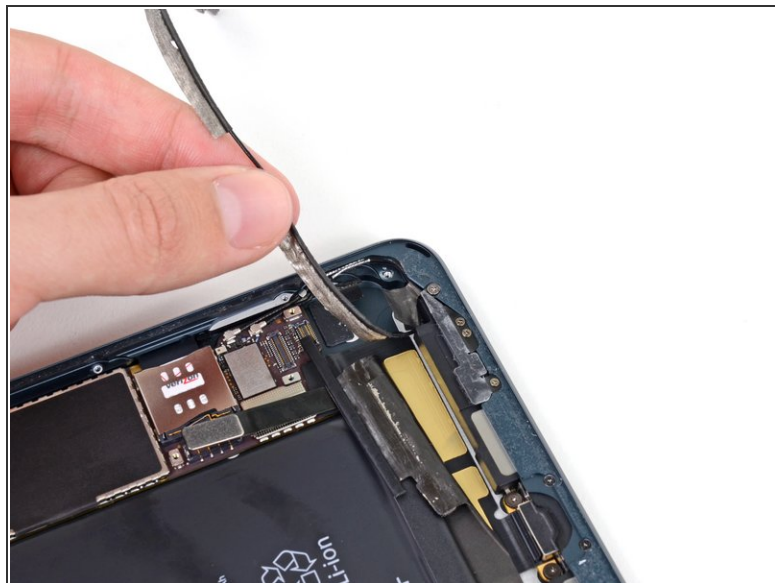
- Use the tip of a spudger to pry the antenna cable tape up from the rear case of the iPad.
- Gently pull the antenna cable out of the way as you work along the piece of tape, to keep it from resealing.

Step 9



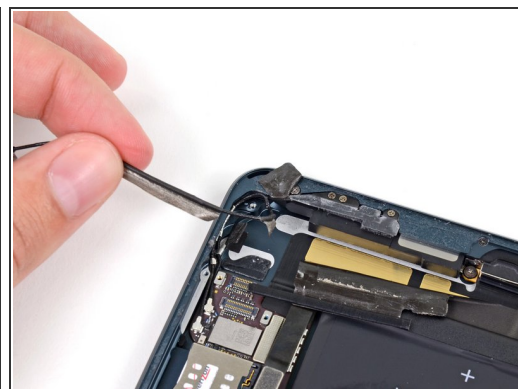
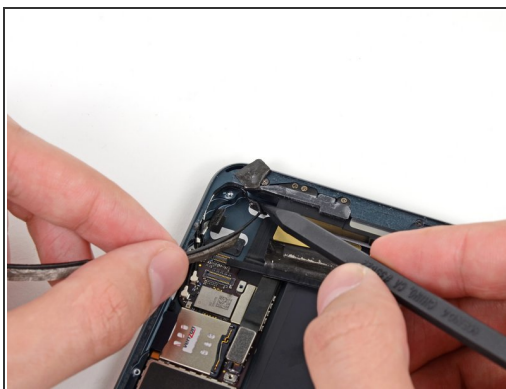
- Pull the antenna cable from the slot behind the Lightning connector.

Step 10



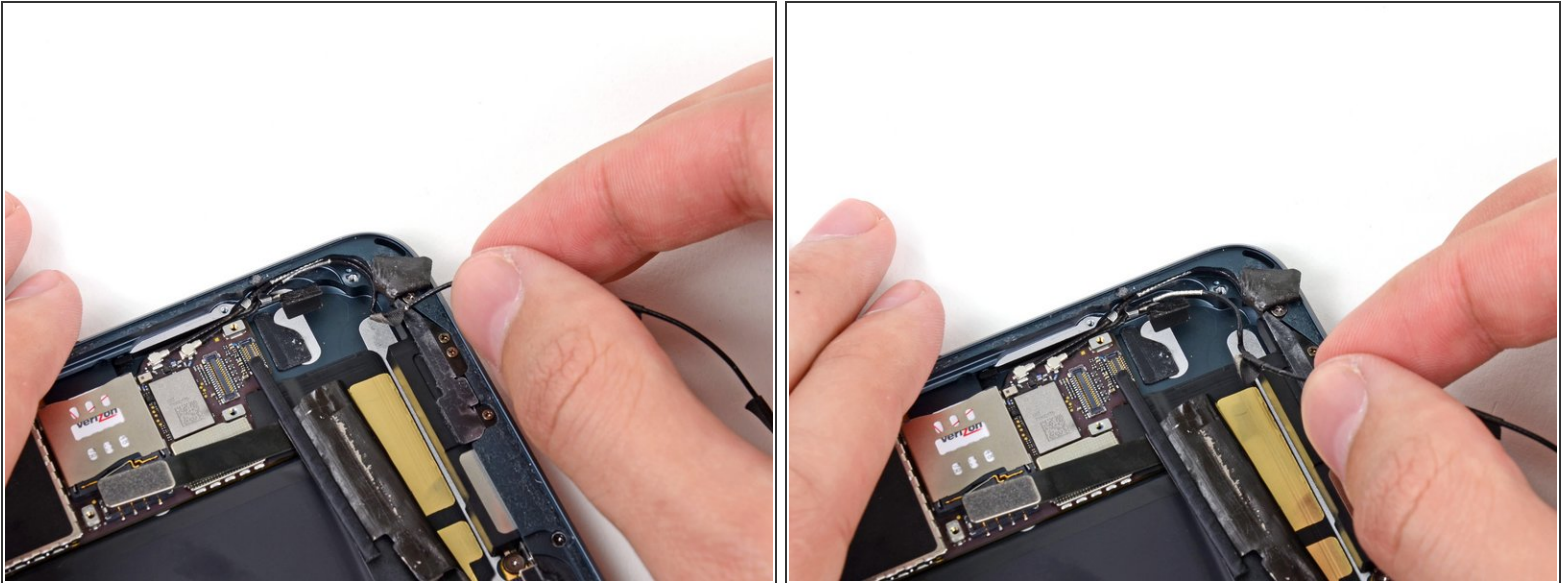
- Use the tip of the spudger to pry the antenna cable tape up from behind the right speaker as well.

Step 11



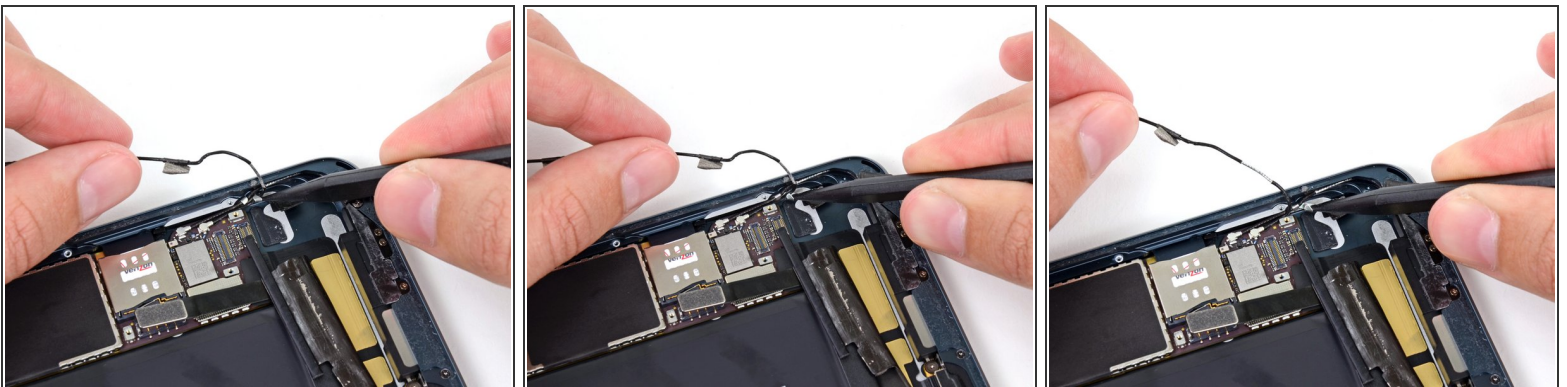
- Use the tip of a spudger to remove the small piece of tape securing the antenna cable in the bottom right corner of the iPad.

Step 12



- Pull the antenna cable away from its recess in the rear case.

Step 13



- Use the tip of a spudger to pry the small metal retaining clip off the antenna cable.
- De-route the antenna cable from the clip.

To reassemble your device, follow these instructions in reverse order.