



# Sony α6000 Motherboard Replacement

Motherboard is a printed circuit board...

Written By: Rohn Albertson



# INTRODUCTION

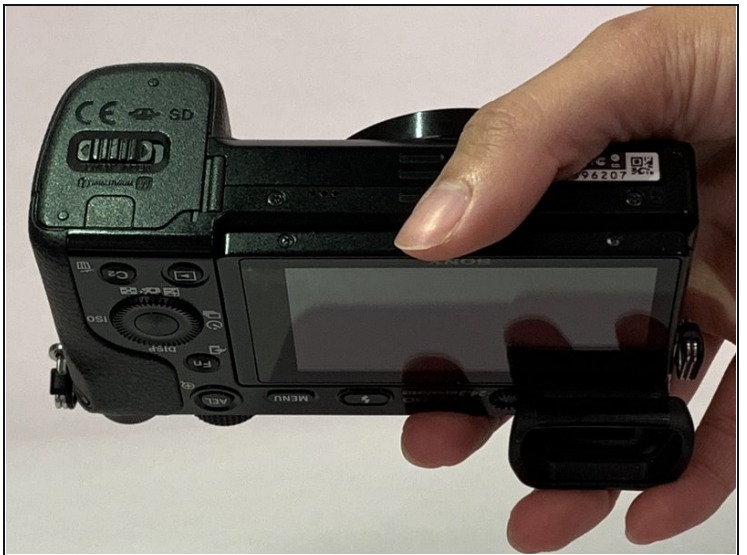
Motherboard is a printed circuit board containing the principal components of a computer or other device, with connectors into which other circuit boards can be slotted. If a short circuit happen to it, your camera might not be able to turn on. This guide will guide you step by step on how to replace the motherboard of your Sony α6000 camera.

## 🔧 TOOLS:

Phillips #00 Screwdriver (1)

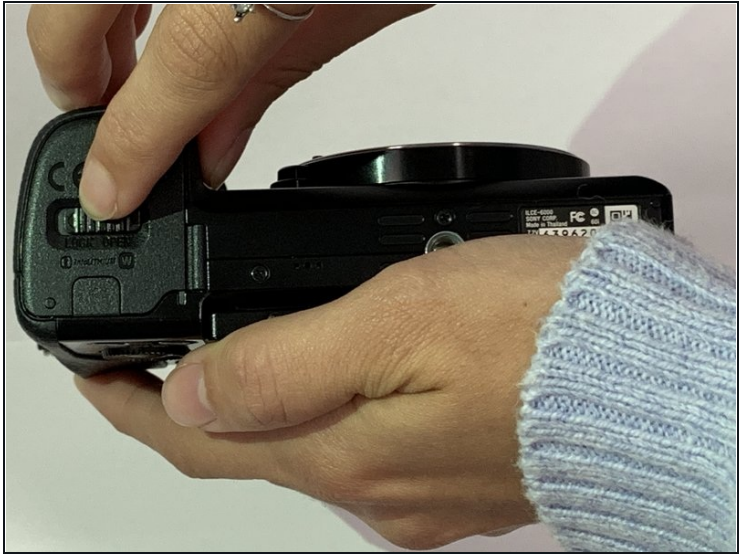
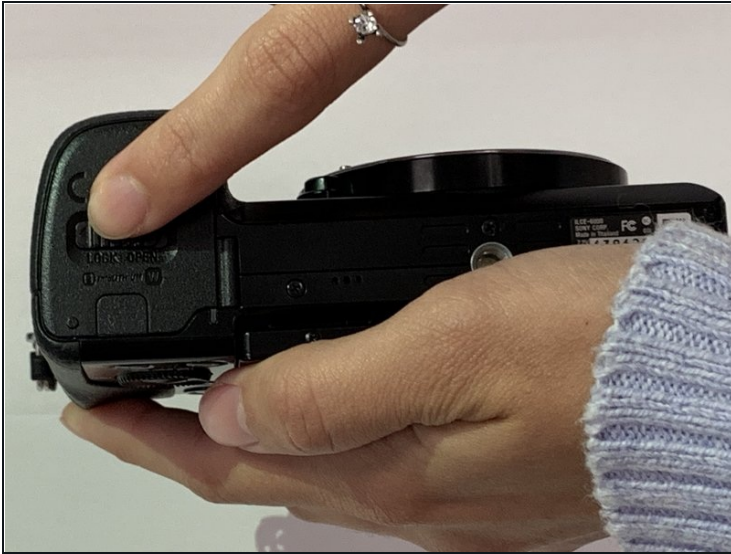
Tweezers (1)

## Step 1 — Battery



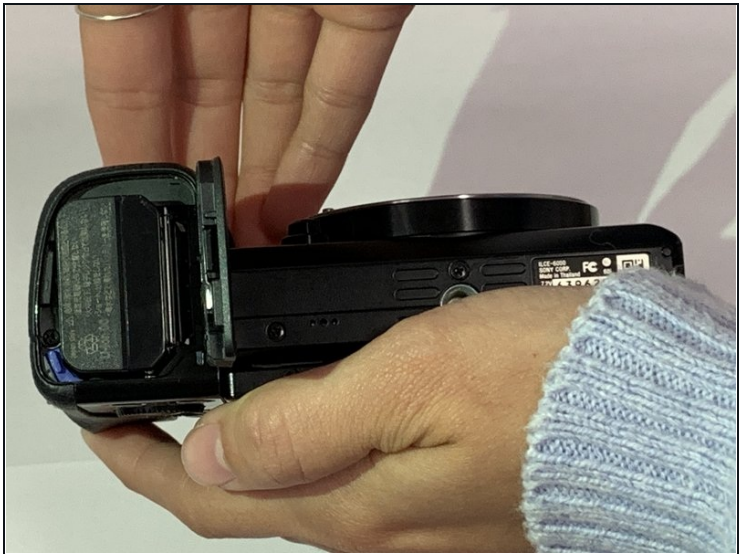
- Begin by placing the camera facing upside down.

## Step 2



- Slide the notched locking bar on the battery compartment from LOCK to OPEN.

## Step 3



- Push the small blue bar horizontally off of the battery.



## Step 4



- Remove the battery.

## Step 5 — Motherboard



- Remove the 1.75mm Phillips #00 screw from the left side of the camera.

## Step 6



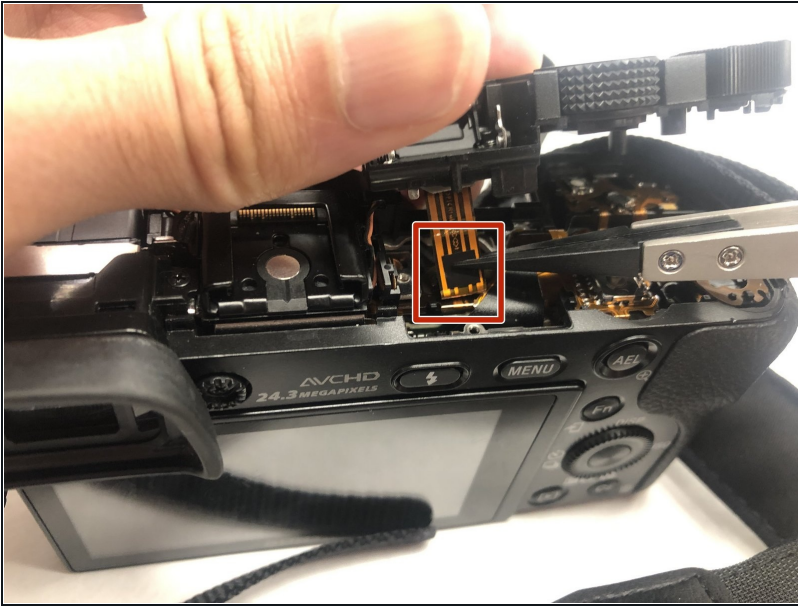
- Remove the two 1.75mm Phillips #00 screws from inside the battery department.

## Step 7



- Remove the 1.75mm screw using a Phillips #00 head from underneath the flash.

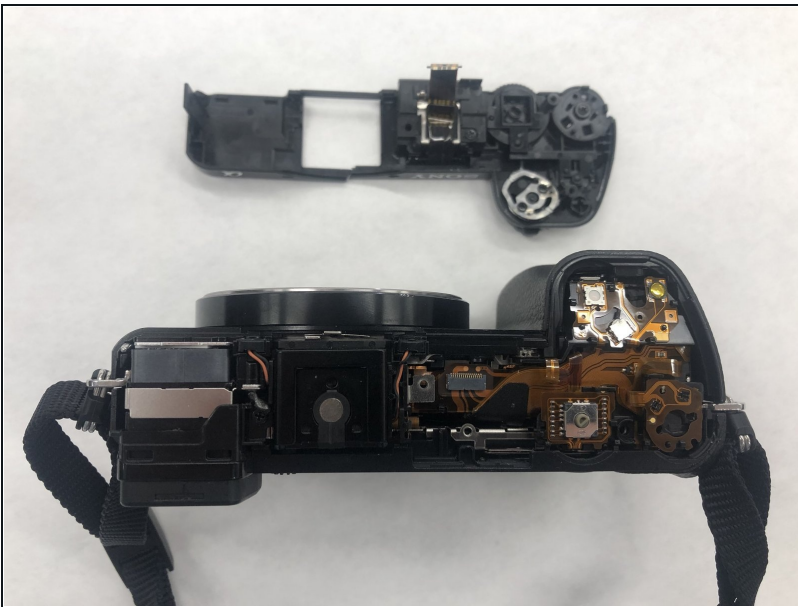
## Step 8



- Carefully remove the ribbon of the flash from the socket by using a pair of tweezers.

⚠ The best known method to removing the ribbon is to use a pair of tweezers with a rubber tip. This will help to prevent damage to the ribbon.

## Step 9



- The top of the camera will be free and can be removed.
- Set the top of the camera to the side.



## Step 10



- Remove the three 1.75mm Phillips #00 screws just below the eye sensor.

## Step 11



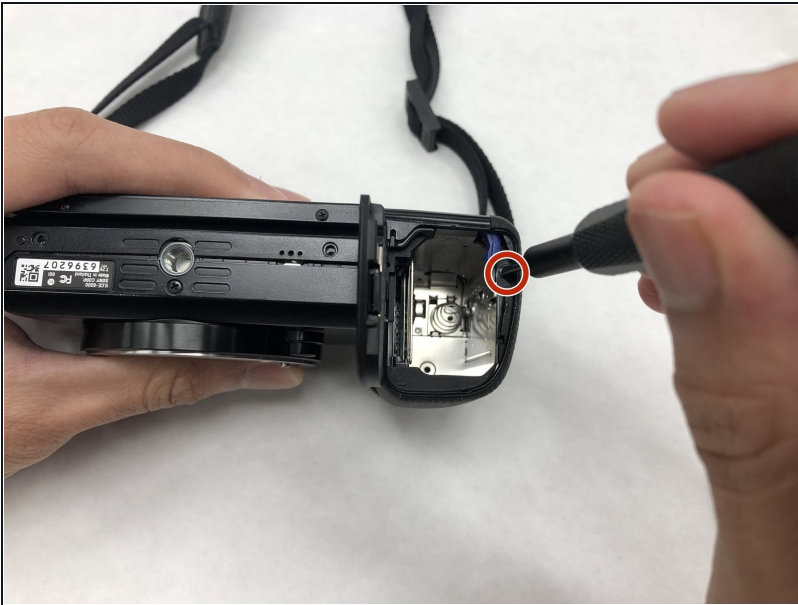
- Remove the 1.75mm Phillips #00 screw from underneath the SD card cover.

## Step 12



- Remove two 1.75mm Phillips #00 screws from the bottom of the camera.

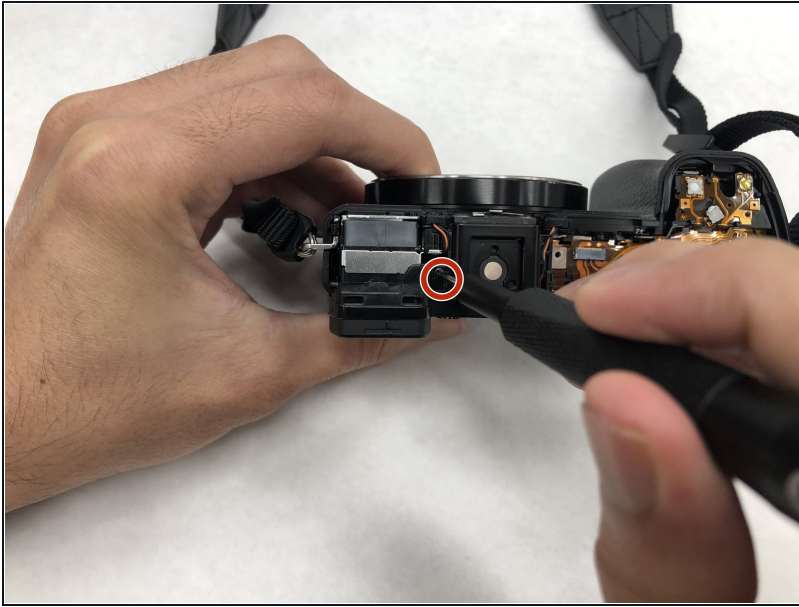
## Step 13



- Remove the 1.25mm screw from the right side underneath the battery cover.

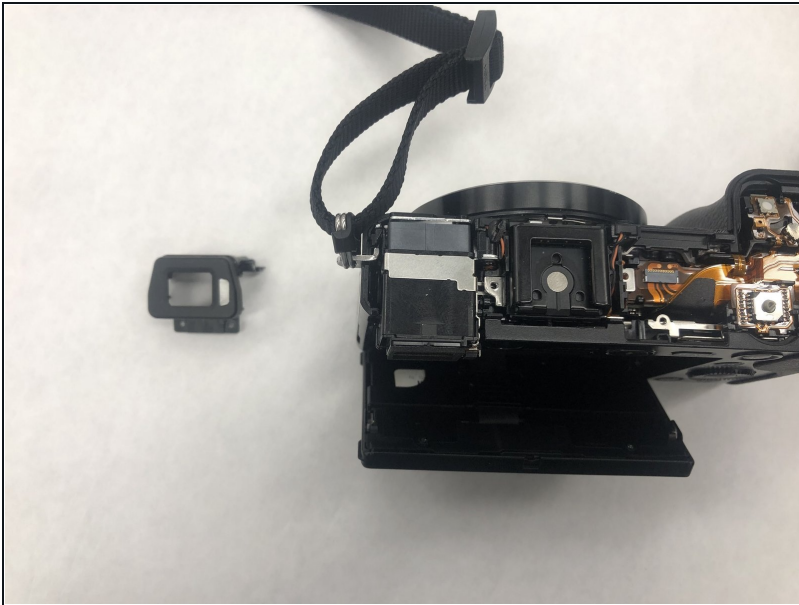


## Step 14



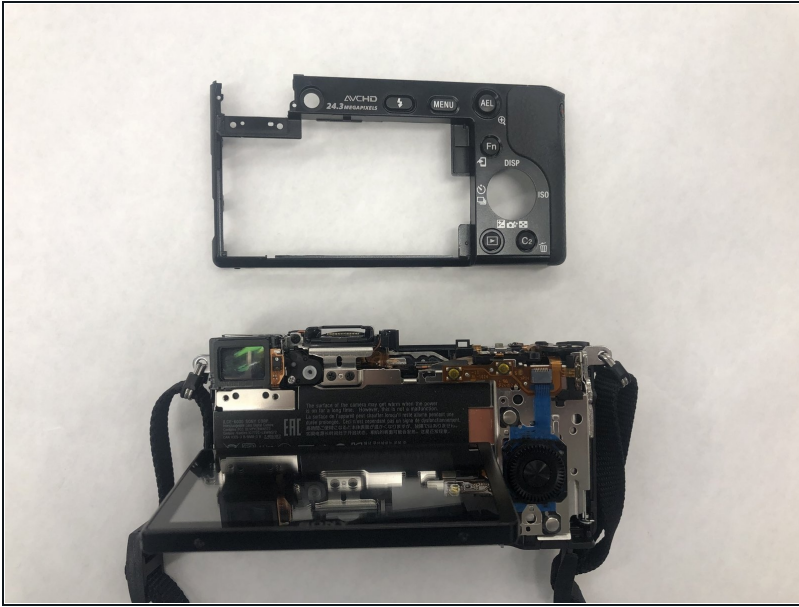
- Remove the 1.75mm Phillips #00 screw just to the right of the eye sensor.

## Step 15



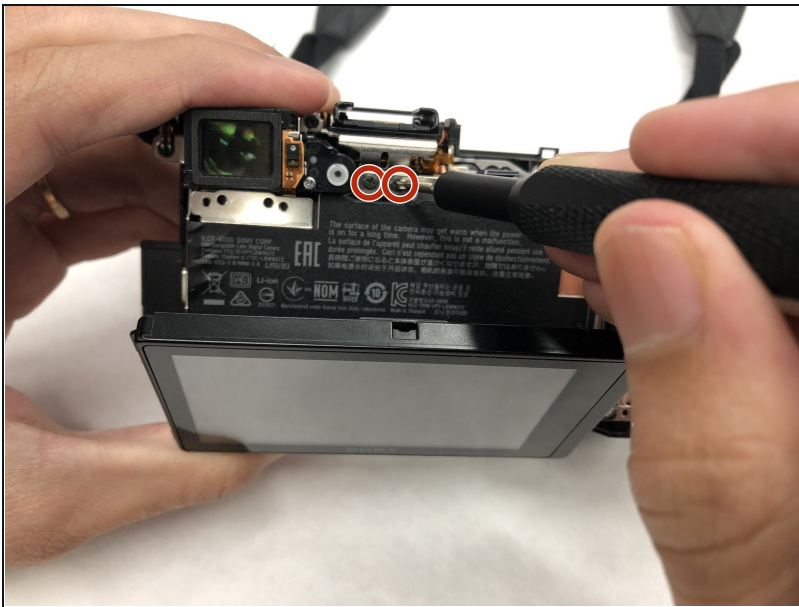
- Set the eye sensor aside.

## Step 16



- Remove the back panel of the camera.

## Step 17



- Remove the two 1.25mm Phillips #00 screws near the top of the camera, just to the left of the eye socket.

## Step 18



- Remove the two 1.75mm Phillips #00 screws from the bottom of the camera.

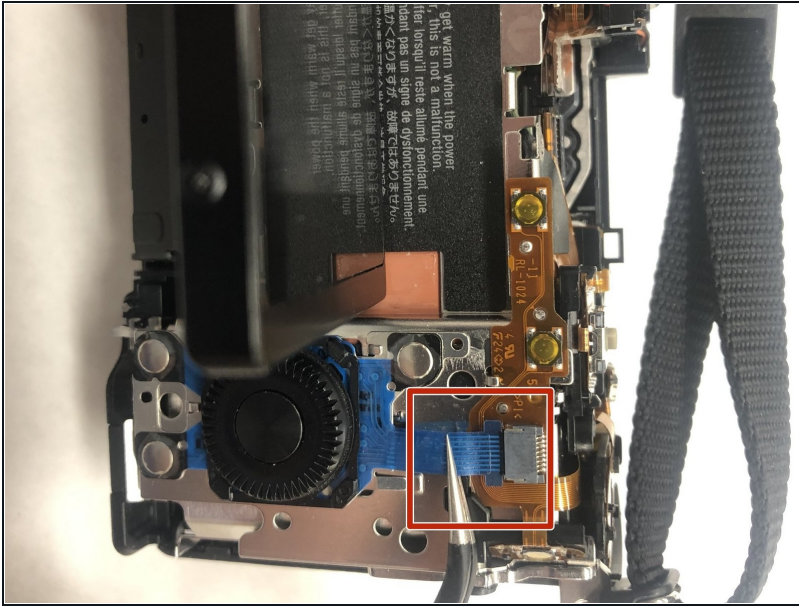
## Step 19



- Remove the three 1.75mm Phillips #00 screws from the right side of the camera.

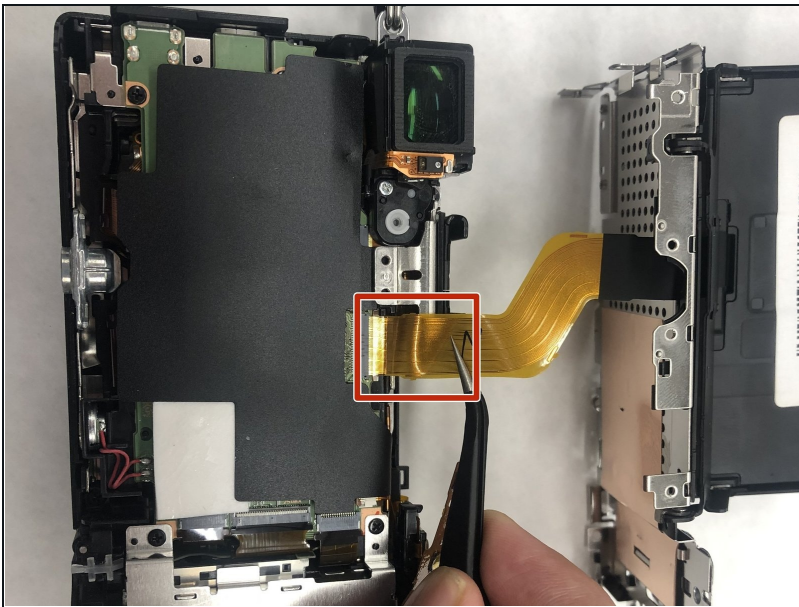


## Step 20



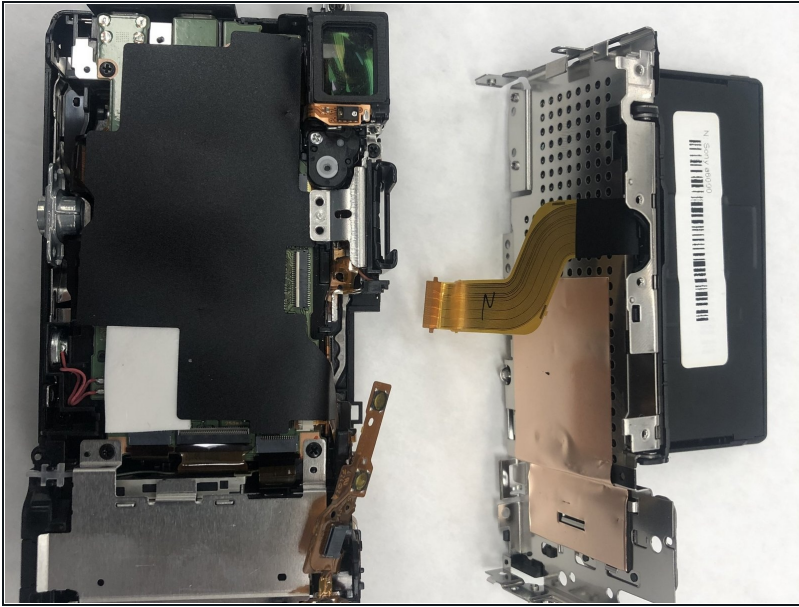
- Remove one ribbon that is attached to the selector wheel with a pair of tweezers.

## Step 21



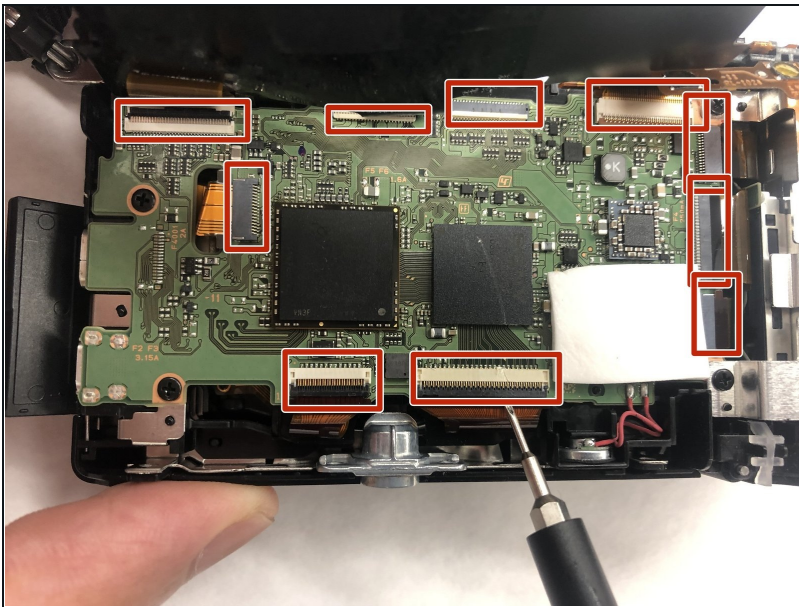
- lift up the protector plate and remove one ribbon that is attached to the LCD screen with a pair of tweezers.

## Step 22



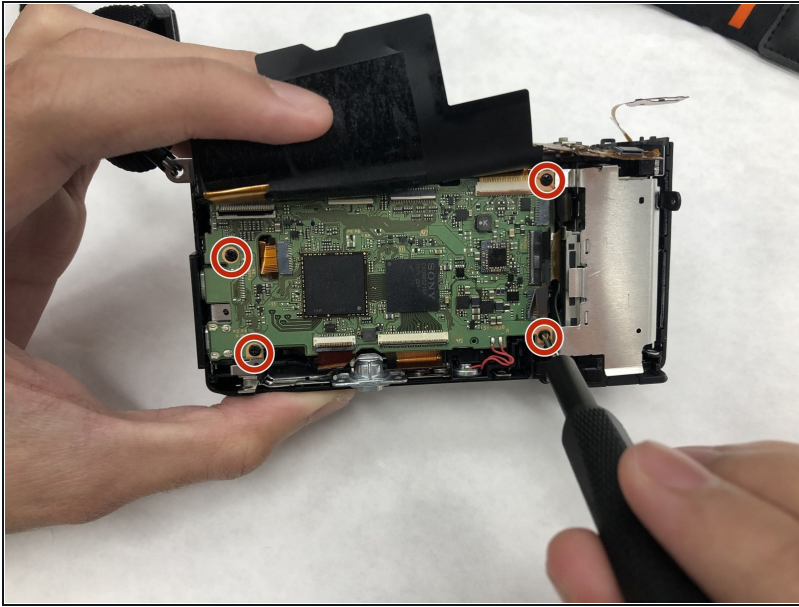
- Detach the LCD screen from the back portion of the camera and set it aside.

## Step 23



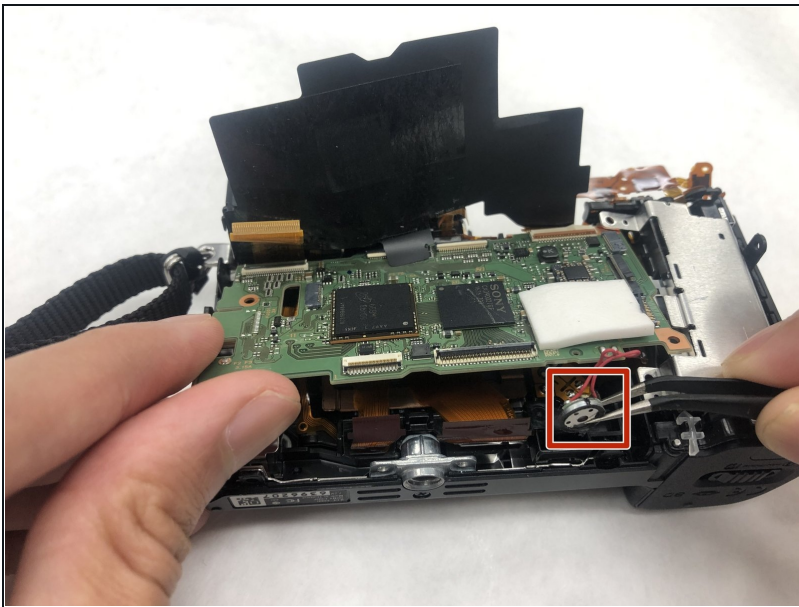
- Lift up the black cover to reveal the motherboard and ten ribbons.
- With a pair of tweezers separate the ribbons from the motherboard by pulling them out of their sockets.

## Step 24



- Remove the four 1.25mm Phillips #00 screws located on the borders of the motherboard.

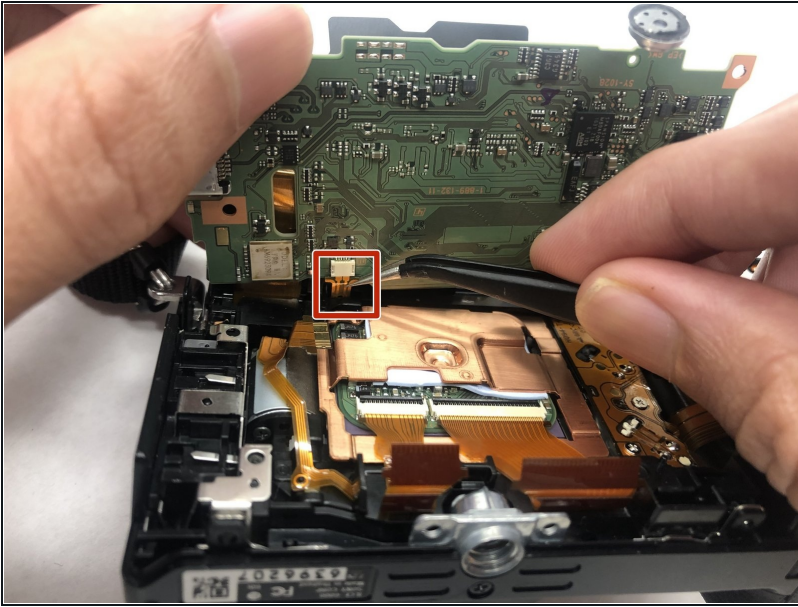
## Step 25



- Remove the power supply at the bottom right hand corner with a pair of tweezers.

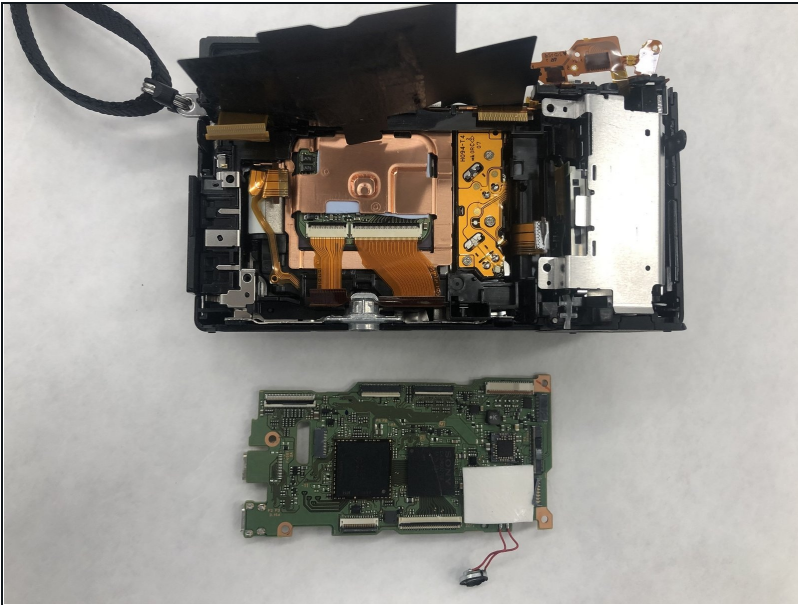


## Step 26



- Lift the motherboard up and remove the last ribbon cable with a pair of tweezers.

## Step 27



- Remove the motherboard and set aside.

---

To reassemble your device, follow these instructions in reverse order.