



# Samsung Galaxy Watch Motherboard Replacement

Use this guide to replace the motherboard in a...

Written By: Tobias Isakeit



# INTRODUCTION

Use this guide to replace the motherboard in a Samsung Galaxy Watch.

---

## TOOLS:

[Tri-point Y00 Screwdriver](#) (1)

[iFixit Opening Tool](#) (1)

[Spudger](#) (1)

[Phillips #00 Screwdriver](#) (1)

[ESD Safe Blunt Nose Tweezers](#) (1)

---

## Step 1 — Opening Procedure



- Remove the four Tri-point #00 screws (4.2 mm length) on the backside of the watch.

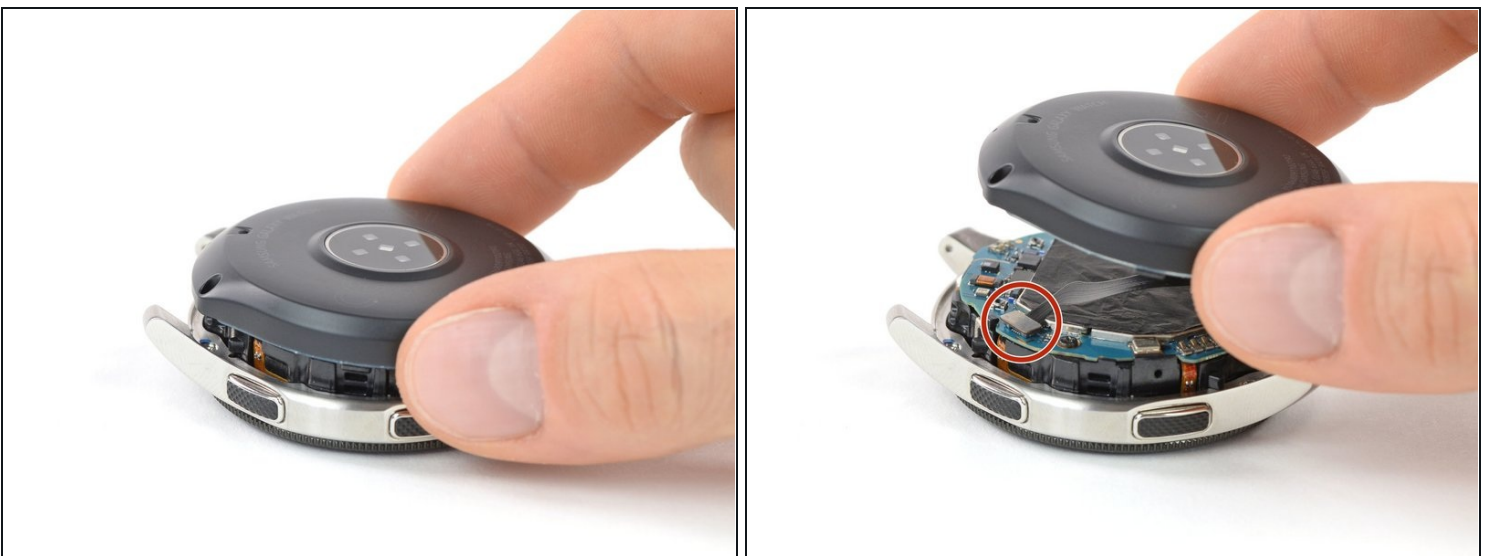
## Step 2



- Use an opening tool to get between the back cover and the metal housing of the watch.
- Carefully pry the plastic back cover open.

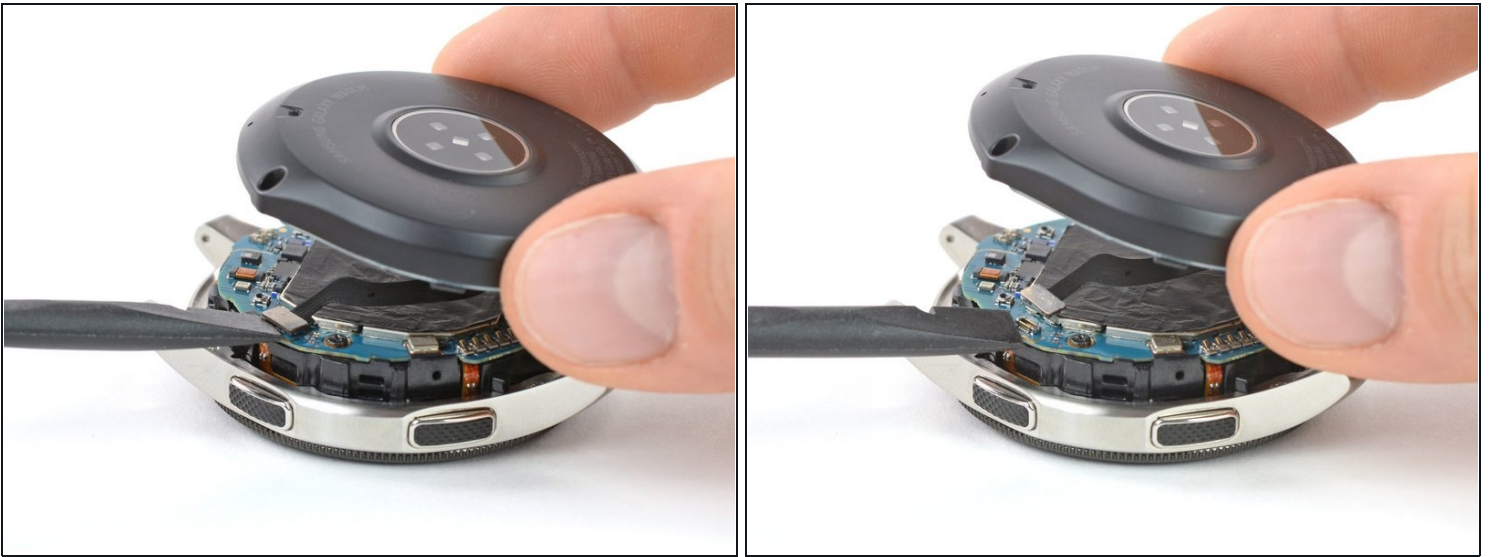
⚠ Don't remove the back cover yet. There is a flex cable running to the core assembly inside.

## Step 3



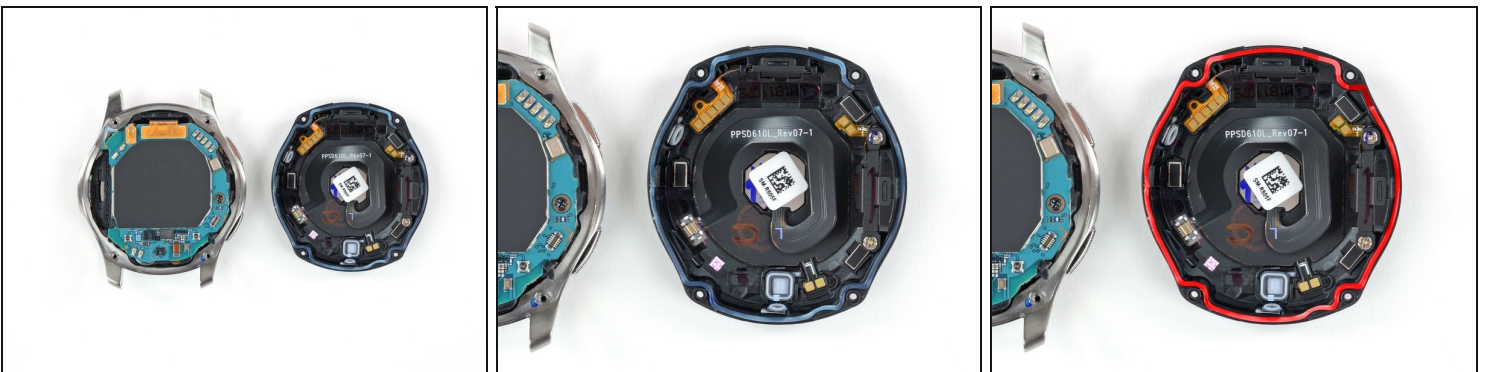
- Lay down the watch and lift the back cover to access the sensor connector on the motherboard.

## Step 4



- Use a spudger to disconnect the sensor flex cable from the motherboard.

## Step 5



- Remove the back cover.
- ☒ When closing the watch make sure the rubber gasket is undamaged or replace it with a new one.

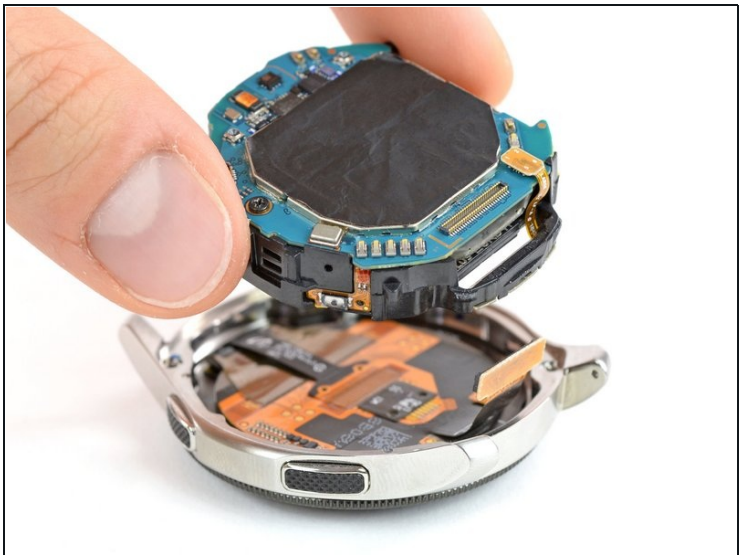
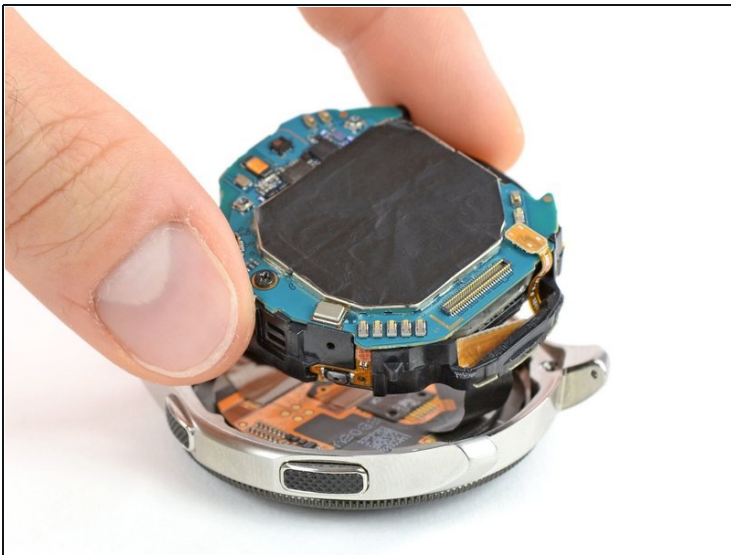


## Step 6 — Core Assembly Removal



- Use a spudger to disconnect the display flex cable from the motherboard.

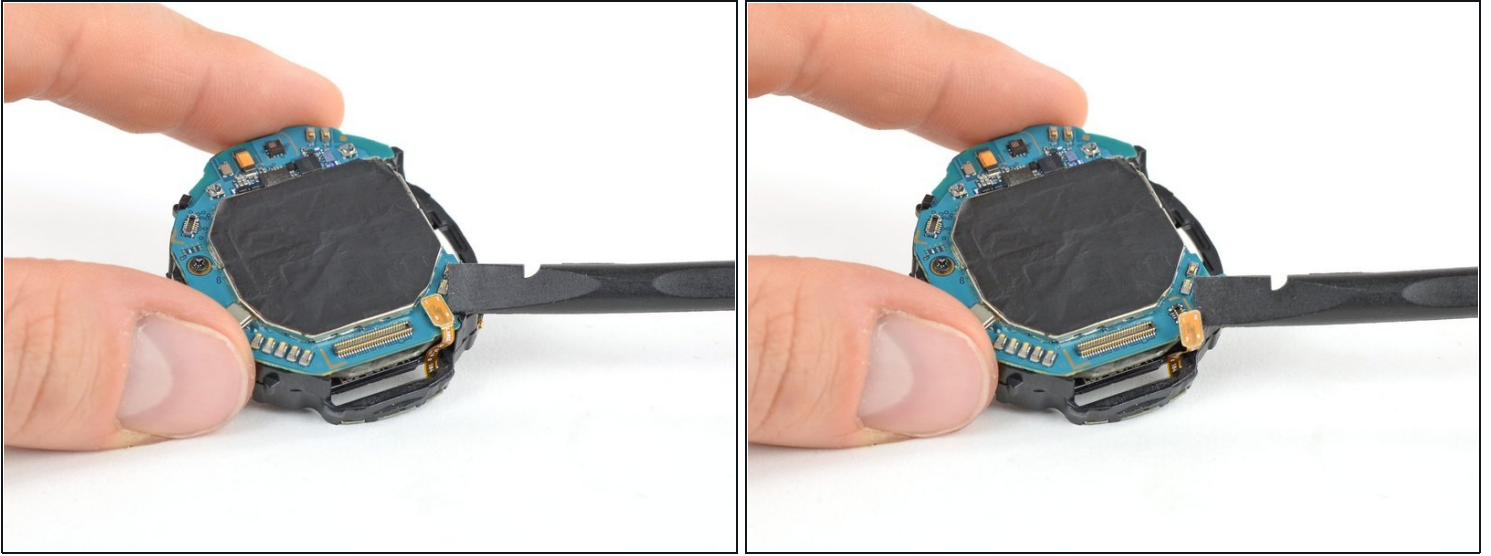
## Step 7



- Lift the core unit out of the housing.
  - ① The core's plastic frame sits tight inside the housing.

⚠ Carefully thread the display flex cable through the gap of the core's plastic frame.

## Step 8 — Motherboard



- Use a spudger to disconnect the hall sensor flex cable.

## Step 9



- Use a pair of tweezers to gently peel both button cables from the plastic frame.
  - ① The button cables have metal plates behind them. These plates should remain on the cables.

## Step 10



- Remove the single Phillips #00 screw (3.4 mm length).

## Step 11



- Insert a spudger into the small gap underneath the motherboard where the cutout in the plastic frame is.
- Lift the motherboard by twisting the spudger.
- Slide the motherboard out from under the plastic tab.

## Step 12



- Remove the motherboard.

If possible, turn on your device and **test your repair** before resealing.

To reassemble your device, **follow these instructions in reverse order**.

Repair didn't go as planned? Try some [basic troubleshooting](#), or ask our [Answers community](#) for help.

Take your e-waste to an [R2 or e-Stewards certified recycler](#).