



Huawei Honor 8 Midframe Bezel Replacement

This guide shows how to remove or replace a broken midframe bezel in the Huawei Honor 8.

Written By: Dominik Schnabelrauch



INTRODUCTION

Use this guide to remove or replace a broken midframe bezel in the Huawei Honor 8.

You'll need **replacement adhesive** to reattach components when reassembling the device.



TOOLS:

- [Tweezers](#) (1)
- [Spudger](#) (1)
- [Phillips #00 Screwdriver](#) (1)
- [iOpener](#) (1)
- [iFixit Opening Picks set of 6](#) (1)
- [Suction Handle](#) (1)



PARTS:

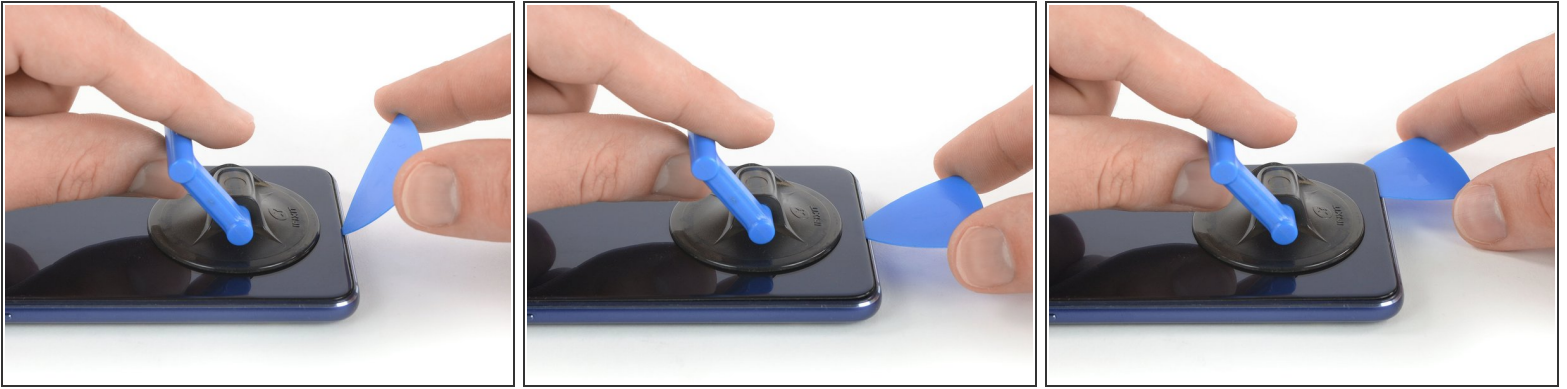
- [Huawei Honor 8 Midframe](#) (1)

Step 1 — Rear Glass



- Before you begin, switch off your phone.
- Apply a [heated iOpener](#) to the back of the phone to loosen the adhesive beneath the rear glass. Apply the iOpener for at least two minutes.

Step 2



- ❗ If the phone's rear glass is cracked, the suction cup may not stick. Try [lifting it with strong tape](#), or superglue the suction cup in place and allow it to cure so you can proceed.
- Secure a suction handle to the lower edge of the rear glass, as close to the edge as possible.
- Lift the rear glass with the suction cup to create a small gap between the glass and the frame.
- Insert an opening pick into the gap.
- ❗ If you have trouble, apply more heat to further soften the adhesive. Follow the iOpener instructions to avoid overheating.
- Slide the opening pick to the bottom right corner.


Step 3



- Insert a second opening pick and slide it to the bottom left corner to cut the adhesive.
- Leave the opening picks in place to prevent the adhesive from resealing.

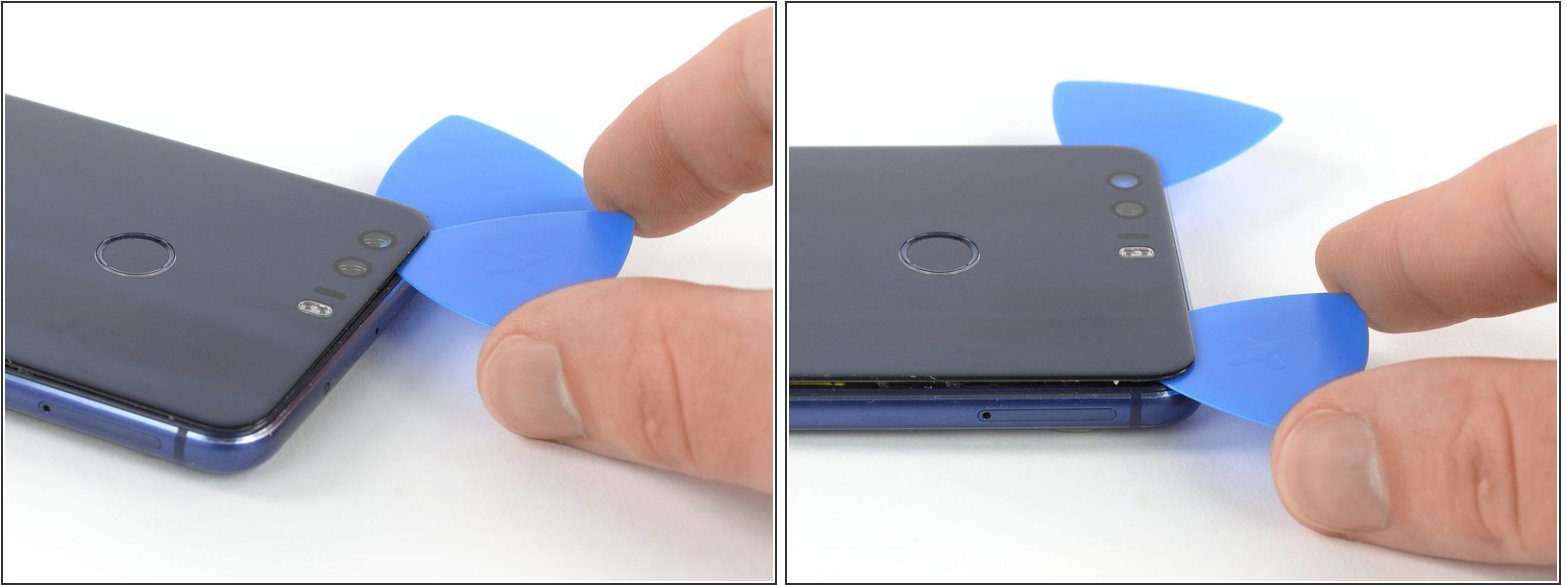
Step 4



 The fingerprint cable is located above the power and volume buttons on this side of the phone. Only use the tip of the opening pick in this area to avoid damage.

- Insert a third opening pick at the bottom left corner.
- Start to slide the tip of the opening pick from the bottom left corner along the side to cut the adhesive.
- Leave the opening pick in its place at the top left corner to prevent the adhesive from resealing.

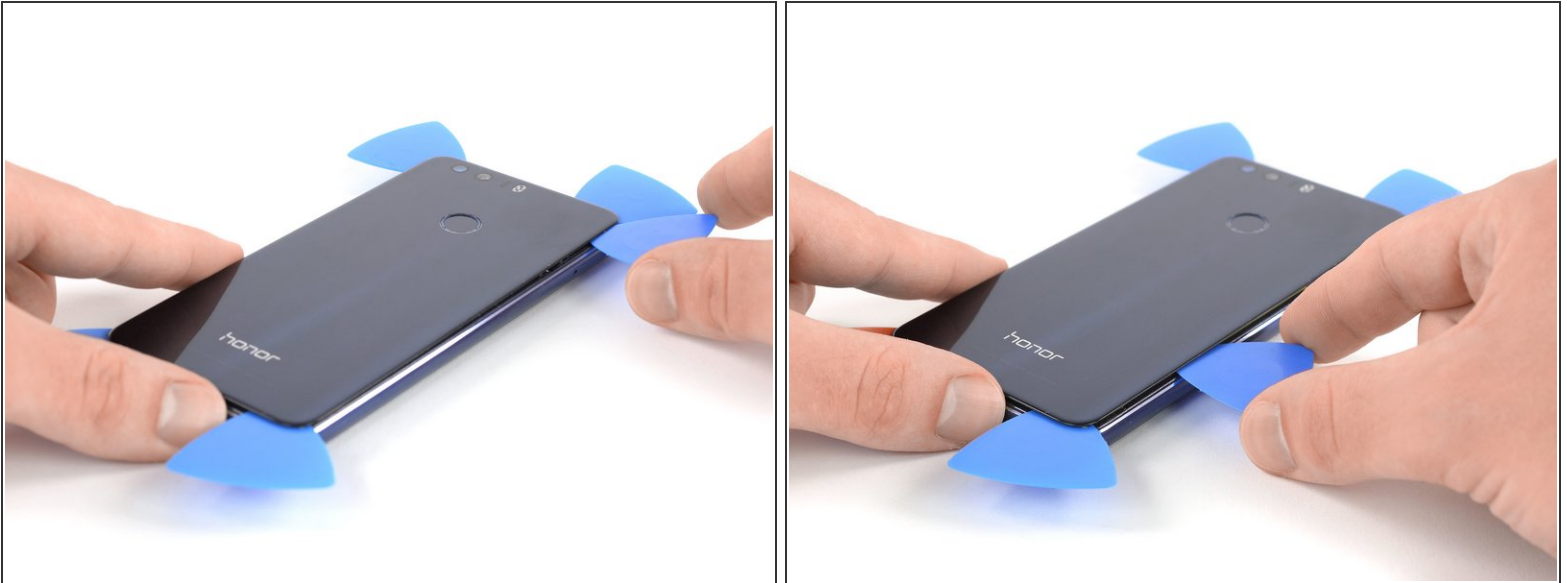
Step 5




 If the adhesive gets hard to cut it most likely cooled down. [Use your iOpener](#) to reheat it.

- Insert a fourth opening pick under the top left corner of the rear glass.
- Slide the opening pick along the top edge of the phone to cut the adhesive.
- Leave the opening pick in the top right corner to prevent the adhesive from resealing.

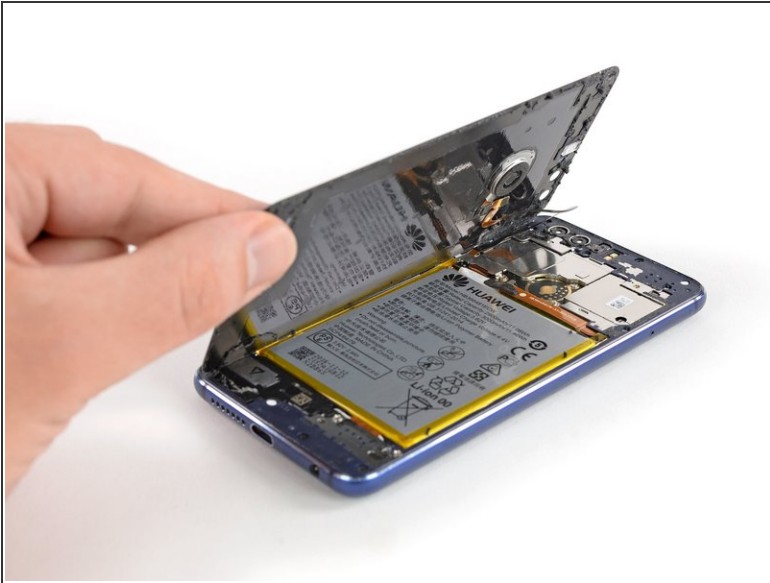
Step 6



- Insert a fifth opening pick at the top right corner of the phone.
- Slide the opening pick along the right side to cut the remaining adhesive.

 The fingerprint cable is still connected to the motherboard. Don't try to remove the rear glass all the way yet.

Step 7



- Carefully lift the rear glass and fold it to the left side of the Honor 8.

Step 8



- Remove the Phillips #00 screw (2.8 mm length) that secures the metal bracket on top of the fingerprint flex connector.

Step 9



- Use a pair of tweezers to remove the metal bracket that sits on top of the fingerprint and display flex connectors.

Step 10



- Use a spudger to pry up and disconnect the fingerprint flex connector.

Step 11 — Midframe Bezel



- Remove these Phillips #00 screws securing the midframe bezel:
 - Eight screws with 3.5 mm length
 - Eight screws with 2.9 mm length
- Some screws might be covered with a tamper proof sticker.

Step 12



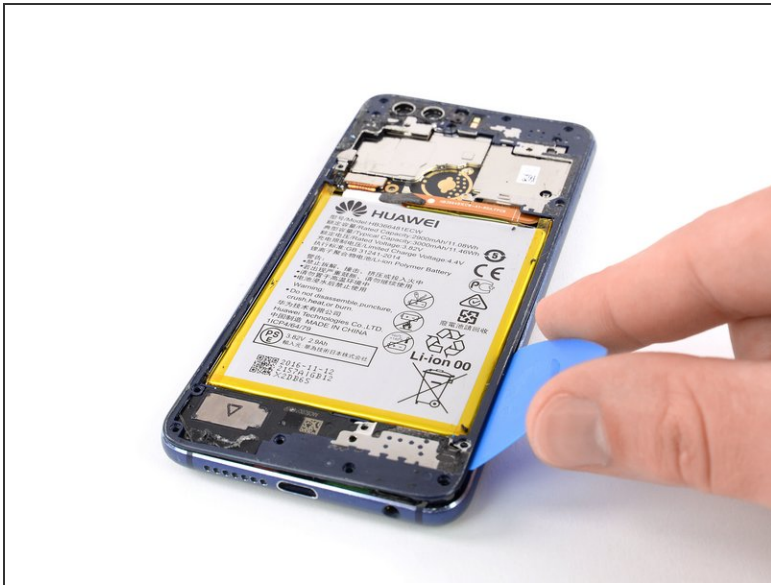
- Insert an opening pick underneath the top right edge of the midframe bezel.
- Use the opening pick to pry up the midframe bezel.
- Insert the opening pick underneath the bottom left corner of the bezel and pry it up.

Step 13



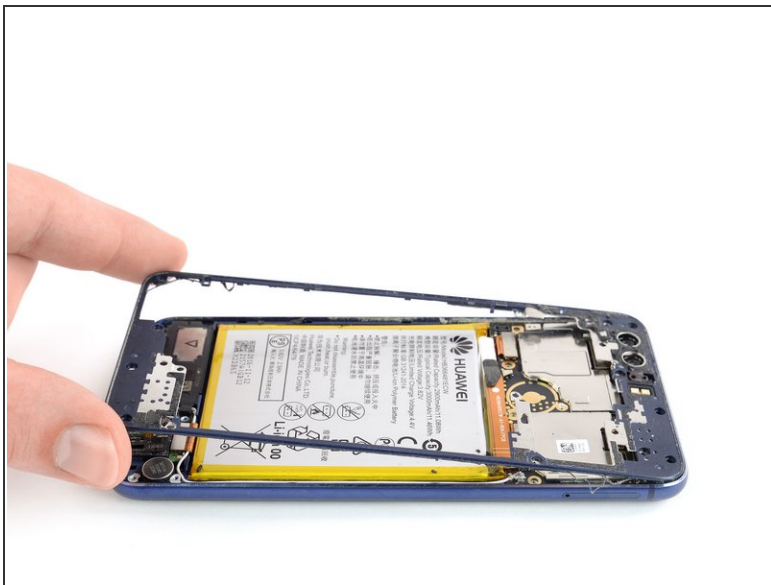
- Insert the long edge of an opening pick in the seam between the midframe and the bezel on the left side of the phone.
- Slide the opening pick along the left side of the phone to cut the adhesive underneath the midframe bezel.

Step 14



- Repeat the procedure on the right edge of the phone to cut the adhesive underneath the midframe bezel.

Step 15



- Carefully grasp the midframe bezel from the bottom corners and lift it upwards.
- Remove the midframe bezel.

To reassemble your device, follow these instructions in reverse order.

Repair didn't go as planned? Check out our [Answers community](#) for troubleshooting help.